

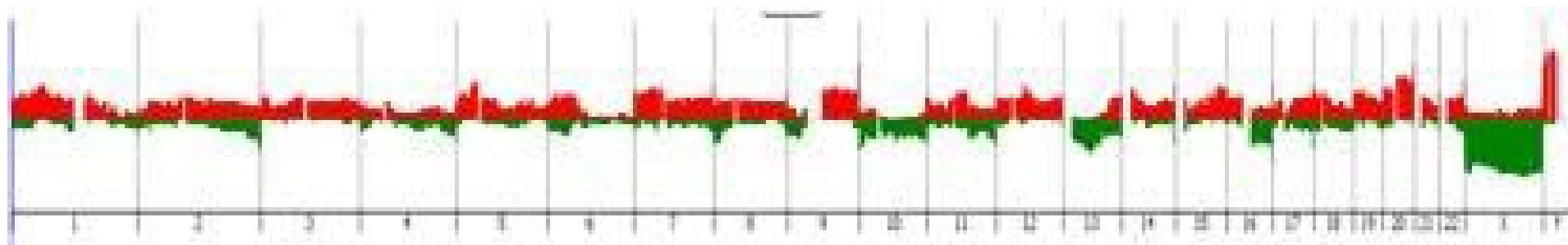
Supplementary Table S1 . Results of an immune score of principal inflammatory components corresponding to the global clustering presented in Figure 8 .

	M2	M0	Monocytes	Mast cells resting	Plasma cells	B cells memory	T cells CD4 naive	Neutrophils	T cells follicular helper 1	Tregs	NK cells resting	T cells CD4 memory	Dendritic cells resting	Dendritic cells active	T cells gamma delta	B cells naive	Eosinophils	Mast cells activated	T cells CD4 memory	T cells CD8	NK cells activated	GI genomic index
8_R1	0.072430822	0.0141242871	0.320189911	0	0.015749279	0.005358673	0.00846844	0.128394379	0.013166686	0.001382255	0.012968643	0	0	0.00796272	0	0	0	0.245395292	0.015098559	0.006860203	0.132295615	NA
20_HT	0.052666167	0	0.206615918	0	0.020227272	0.01144062	0	0.099313742	0.040444726	0.037689594	0	0	0.006049236	0	0	0	0	0.059654467	0.03945693	0.150155826	NA	NA
1_R1	0.160023808	0.069997246	0.279319958	0	0.005627551	0.00174887	0	0.162833943	0	9.00E-04	0	0	0	0	0	0	0	0.376363963	0.101757184	0.009891991	0.031561506	NA
8_HT	0.035846109	0.072069769	0.301184452	0	0.056344173	0.125129229	0	0.068390555	0	0	0	0.067332479	0	0	0.006076408	0	0	0.097253772	0.104564421	0.049134429	0.016674203	NA
17_HT	0.093750494	0	0.273476343	0.011484737	0.234173356	0.018728734	0	0.041739118	0.027908236	0	0.092567209	0.047838045	0	0	0.014328396	0.055023254	0.053334893	0.035647185	NA	NA	NA	
11_HT	0.109753203	0	0.275743083	0.066475112	0.201164959	0	0	0.076110595	0.003451739	0	0.024779119	0	0	0.004143695	0.005377513	0	0	0.034386662	0.087871496	0.034142181	0.076600644	NA
13_HT	0.186933736	0	0.29229634	0	0.137647147	0.040868258	0.047687762	0.034144024	0.0233398	0.003523593	0.014940788	0	0	8.00E-04	0	0	0	0.119830447	0	0.012971121	0.085062052	NA
7_HT	0.163774052	0	0.350484979	0.031782343	0.110254837	0.094842556	0	0.008897084	0	0	0	0	0	0.004376275	0	0	0	0.069206865	0.109253759	0.03066623	0.02646102	NA
1_HT	0	0.023839736	0.514650311	0	0.027040514	0.053450946	0.024715599	0	0.00556167	0	0.053626111	0	0	0.011204851	0	0	0	0.087070401	0.044649771	0.024093832	0.13009626	NA
19_HT	0.016140521	0.082749947	0.311066623	0.256509216	0.001313185	0.013619946	0	0.001010802	0.005383106	0	0.035659661	0	0	0.038730274	0	0	0	0.038987421	0.112402044	0.04697927	0.039537985	NA
6_T	0.04197721	0.483908856	0.032494976	0.016407287	0	0.049708486	0	0	0.044257907	0.011340067	0.022937976	0	0	0.007148579	0.046421762	0	0	0	0.16345951	0.070939385	17	NA
13_T	0.356027658	0.533422275	0.002748008	0	0	0.015325175	0.003833875	0	0	0	0	0	0	0	0.039046411	0.04634626	0	0.039046411	0.04634626	0.014961972	114	NA
11_T	0.185134283	0.513775624	0	0	0.039009549	0.103491892	0.029384979	0.03607056	0.010843074	0.01955796	0.017229538	0.011619218	0.003451546	0.007494464	0	0	0	0.015604569	0.007332744	0	0	158
17_T	0.346246533	0.110995358	0	0	0.029786803	0.069067386	0	0.025964992	0.030779958	0.009047122	0.02918709	0.014705615	0	0	0.171268644	0	0	0.171268644	0	0.144070637	0	385
2_T	0.4119461	0.269015599	0	0	0	0.005586164	0.020843986	0.002978761	0.071224612	0.017838963	0.001144298	0	0	0	0	0	0	0.12097856	0	0.078442958	277	NA
10_T	0.271601389	0.265385862	0	0.03778118	0.01484201	0.093029275	0.005217464	0.020222482	0.018640336	0.048475718	0	0	0	0	0.036527705	0.008829895	0	0.036527705	0.008829895	0.075771716	134	NA
20_T	0.301976551	0.287257013	0.027406507	0	4.00E-04	0.043939695	0	0	0.037943624	0	0.08174855	0	0	0	0.05419425	0.103906159	0.020265934	0.05419425	0.103906159	0.040989721	49	NA
14_T	0.317876709	0.330073562	0.020604504	0	0.004513054	0.020241717	0	0.011475861	0.004474526	0.027351277	0.001	0	0	0.124633904	0.090796253	0.000796253	0.124633904	0.090796253	0.000796253	192	NA	
10_R1	0.435970709	0	0.045569678	0	0.022381014	0.029073008	0	0.00485489	0.027606557	0.023783681	0	0	0	0	0	0	0	0.215183019	0.073817618	0.027637283	0.110386174	NA
13_R1	0.363800881	0	0.11861146	0	0.001474317	0.00681853	0	0.002022908	0.015112806	0.047267683	0	0	0	0	0.246555086	0.098791384	0.016870943	0.246555086	0.098791384	0.016870943	0.082674001	NA
5_R1	0.365615659	0	0.156311379	0	0.019144849	0	0.04850545	0.002376601	0.006106641	0.001205916	0	0	0	0	0	0	0	0.152431495	0.10645099	0.027547828	0.114301392	NA
15_HT	0.318623245	0	0.074417474	0.045774447	0.053326313	0.007500983	0	0.016358017	0.025835495	0	0	0	0	0	0	0	0	0.130894879	0.090338358	0.0781763	0.158753158	NA
15_R1	0.330187568	0	0.089222324	0	0.029124704	0.029777954	0	4.00E-04	0.017059231	0	0	0	0.007731463	0	0.208986944	0.063947722	0.140195982	0.208986944	0.063947722	0.140195982	NA	NA
18_T	0.370352739	0	0.079561555	0.038958616	0.006623238	0.012278898	0.145949875	7.00E-04	0.005755648	0.052170574	0.06894405	0	0.002968818	0	0.09459125	0	0	0.09459125	0	0.121137211	5	NA
17_R1	0.457091918	0	0.064035241	0.023756617	0.010077771	0.025925087	9.00E-04	0.005060048	0.026246716	0	0	0	0	0	0.085087038	0.058249567	0.126112439	0.085087038	0.058249567	0.126112439	NA	NA
12_HT	0.423406669	0	0.105277472	0.124680577	0.031727326	0.039210655	0	0	0	0	0	0	0	0	0.072040054	0.082964172	0.119759075	0.072040054	0.082964172	0.119759075	NA	NA
11_R1	0.417102553	0	0.059727748	0.122369409	0.054596052	0	0	0.012609424	0.020133457	0	0	0	0	0.004261932	0.054581471	0.152389351	0.054581471	0.152389351	0.054581471	0.152389351	NA	NA
6_R1	0.478738751	0	0.08484571	0.104081531	0.010588194	0.057736749	0	0.024920761	0.010208252	0.010110582	0	0	0.007896901	0	0.101002837	0.030207949	0.079661782	0.101002837	0.030207949	0.079661782	NA	NA
9_R1	0.426597587	0.03352278	0.0644605	0.085370538	0.006493447	0.037127412	0	0.002994188	0.057826229	0	0	0	0.006074782	0	0.121720747	0.064505796	0.111229994	0.121720747	0.064505796	0.111229994	NA	NA
7_R1	0.409618378	0	0.175027668	0.115530455	0.018841845	0.057783053	0.055721902	0	0.005518557	0.015673675	0	0	0	0	0.113905061	0.032379406	0.032379406	0.113905061	0.032379406	0.032379406	NA	NA
7_T	0.42839347	0	0.249184695	0.069387284	0.005047239	0.029910724	0	0	0	0	0.02772518	0.07056217	0	0.030854844	0	0	0	0.030444293	0.058490102	0	138	NA
4_R1	0.284576764	0	0.27186171	0.007065703	0.011951628	0.001297208	0.010470826	0	0.001116019	0.04420606	0.004130772	0	0	0.003369781	0.013415806	0.093835738	0.090315627	0.093835738	0.090315627	0.162386357	NA	NA
4_HT	0.222176349	0	0.23400013	0.15993978	0.004142026	0.013483721	0	0.063732701	0.008296784	0.013630413	0	0	0	0	0.115840564	0.053101929	0.11655603	0.115840564	0.053101929	0.11655603	NA	NA
5_T	0.271261313	0	0.161486426	0.058276019	0.008758079	0.118668415	0	0.030706828	0.046805611	0.020942935	0	0.009114062	0.003695873	0	0.110045711	0.073471701	0.086567027	0.110045711	0.073471701	0.086567027	109	NA
4_T	0.25808695	0	0.133481349	0.017812423	0.008369444	0.02801677	0	0.007317289	0.067080251	0.039512929	0	0.005152682	0	0.130835656	0.199061561	0.10998779	0.130835656	0.199061561	0.10998779	65	NA	
15_T	0.411615564	0	0.115232668	0.110976744	0.005716844	0.00833485	0	0.016050391	0	0	0.054432313	0	0	0.037228783	0.160733243	0.079679964	0.037228783	0.160733243	0.079679964	16	NA	
9_T	0.261313465	0	0.098479705	0.138498404	0.013834177	0.045161708	0	0.019508675	0	0.019508675	0.112767662	0.004615951	0.005195308	0	0.037178845	0.06593542	0.116329142	0.037178845	0.06593542	0.116329142	97	NA
5_HT	0.249125198	0	0.129790461	0.082881053	0.115768085	0.094306266	0.045814431	0.030431224	0.013154077	0.009223531	0.010062266	0	0	0	0	0	0	0.010062266	0.009223531	0.010062266	0.009223531	NA
16_T	0.265948051	0	0.084742686	0.148502227	0.049070381	0.121028186	0.072330146	0	0.00451446	0.071142347	0.048175131	0	0	0	0	0	0	0.00451446	0.071142347	0.048175131	127	NA
3_T	0.270789264	0.143457371	0.062964701	0.142653226	0.017841278	0.057870918	0	0.010732125	0.00566325	0.027437164	0	0	0	0.002141138	0.093887519	0.063918722	0.002141138	0.093887519	0.063918722	0.106040247	49	NA
10_R1	0.21719673	0.020448809	0.082008008	0.144185423	0.041878201	0.064301538	0	0.005562018	0.049204579	0	6.00E-04	0	0	0.144520461	0.128842575	0.101253296	0.144520461	0.128842575	0.101253296	NA	NA	
2_R1	0.342451565	0	0.014140321	0.166266773	0.005068251	0.04467797	0	0.003309286	0.00771178	0.026351599	0	0.106171741	0	0	0.156189718	0.071021615	0.056459381	0.156189718	0.071021615	0.056459381	NA	NA
3_R1	0.249240906	0	0.113009311	0.176400955	0.005454507	0	0.06178094	0	0.031350657	0.00223393	0	0.02264036	0.05541264	0.060389963	0.083647739	0.105921903	0.083647739	0.105921903	0.105921903	0.032511818	NA	NA
8_T	0.330215976	0	0.093047202	0.161703637	0.016820996	0.034757117	0	0	0.051812988	0.001273682	0	0.014486928	0	0.037431705	0	0.010401408	0.155102365	0.010401408	0.155102365	0.099249996	41	NA
16_R1	0.282688656	0	0.112852728	0.1																		

Supplementary Table S2: Comparison of genomic index tumors from R1.h group vs R1.t group.

Characteristic	0, N=8 ¹	1, N=12 ¹	p-value ²
Genomic index	87.75	120.9	0.42
¹ Mean (SD)			
² Welch Two Sample t-test			

Supplementary Figure S1: Penetrance plot of data from CGH.



Supplementary Figure S2: Genomic profiles of other cases obtained by CGH.data 2

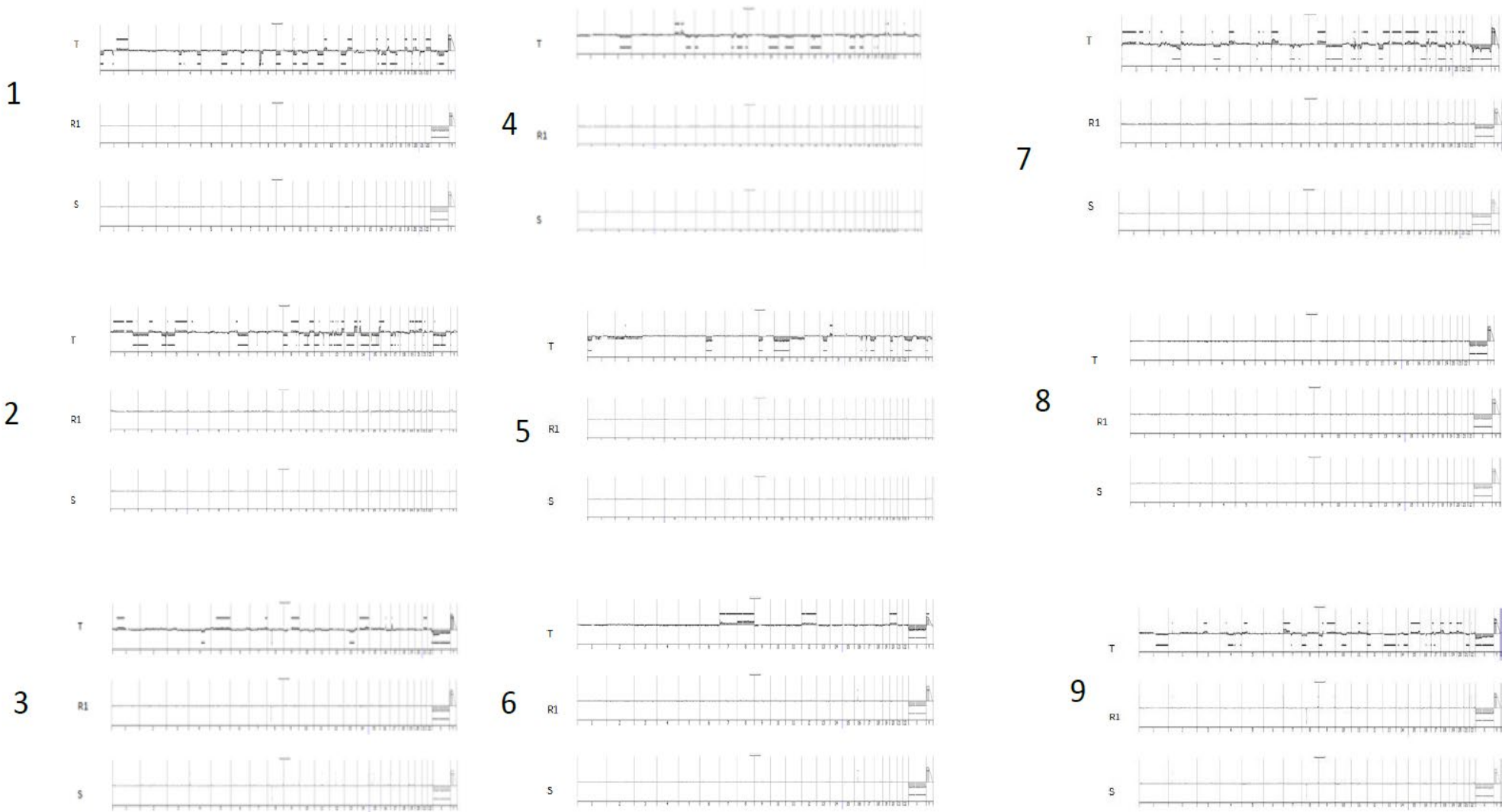
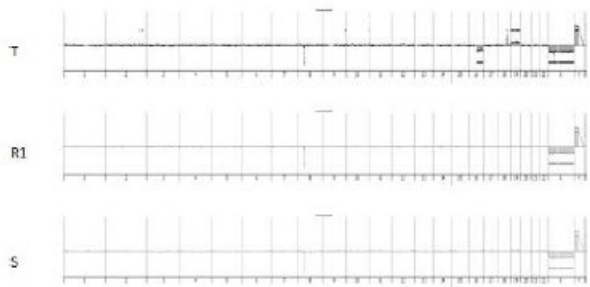
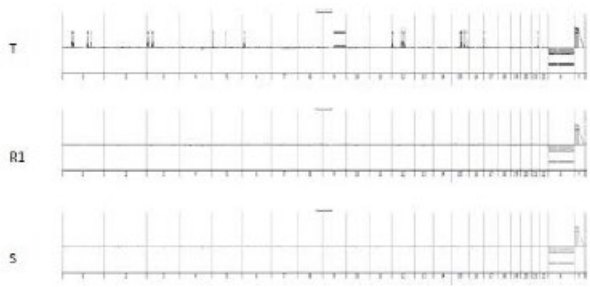


Figure 1 displays three ECG traces labeled T, R1, and S. The T trace shows a prominent T wave, while the R1 and S traces show smaller R and S waves, respectively.

19



20



Supplementary Figure S3: Box plot of data of CIBERSORT between R1.h group vs R1.t group.

