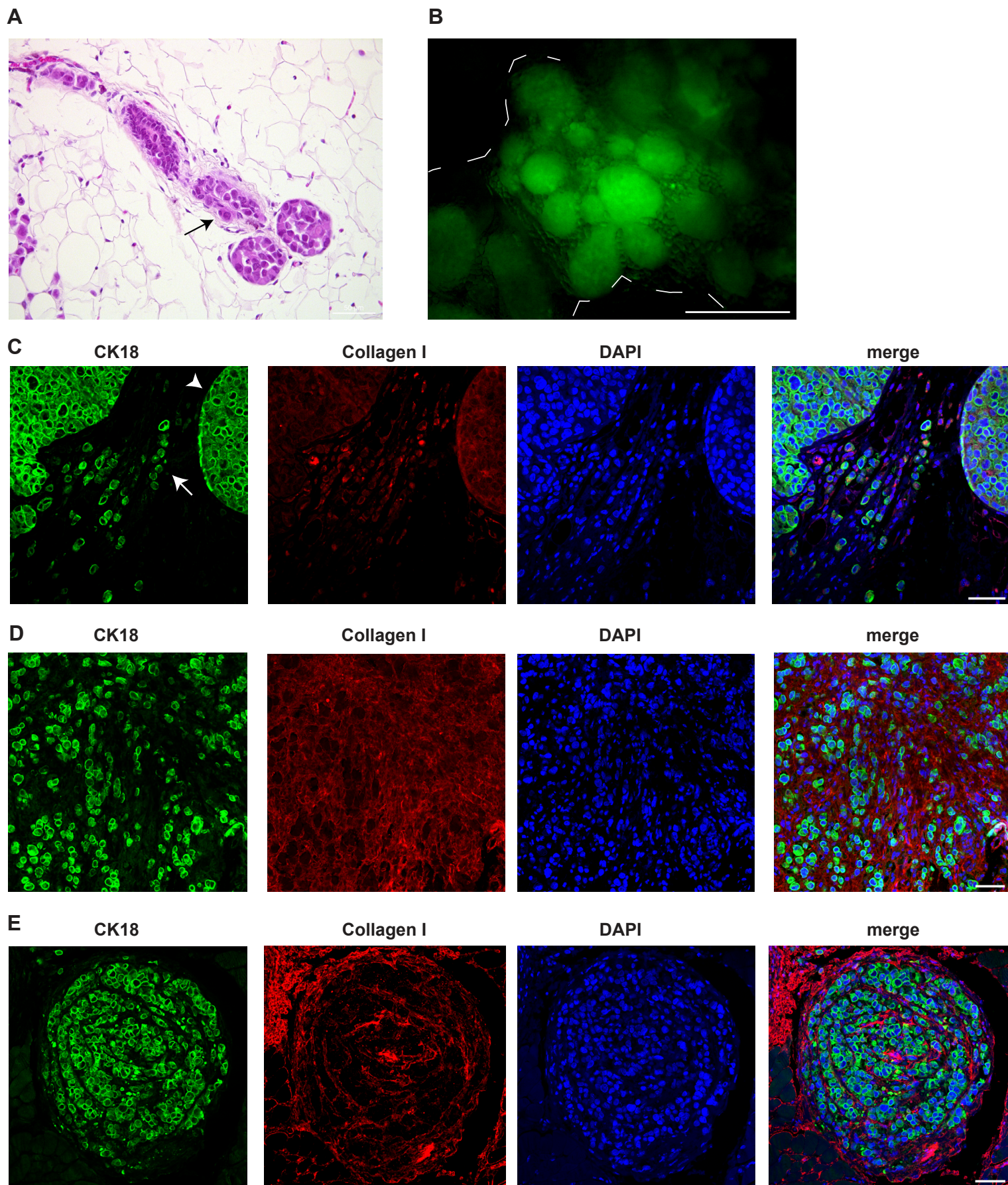


## Supplementary Materials



**Supplementary Figure S1. Morphological analysis of IPH-926 xenografts.**

(A) Representative micrographs of H&E-stained histological section of xenografted mammary gland 1 month after intraductal injection with IPH-926 cells. Scale bar, 50 μm.

(B) Fluorescence stereo-micrograph of xenografted mammary gland 4 months after intraductal injection with IPH-926 GFP-luc2 cells. Scale bar 1 mm.

(C) Representative micrographs of triple co-stained histological section (CK8, collagen type I, and DAPI) of xenografted mammary glands 4 months after intraductal injection. White arrowhead points to LCIS, and the arrow points to invasive cells. Scale bar, 50 μm.

(D) Representative micrographs of triple co-stained histological section (CK8, collagen type I, and DAPI) of xenografted mammary glands 4 months after intraductal injection showing extensive invasion. Scale bar, 50 μm.

(E) Representative micrographs of triple co-stained histological section (CK8, collagen type I, and DAPI) of xenografted mammary glands 4 months after intraductal injection showing targetoid spread. Scale bar, 50 μm.