

Figure S1. Comparison of the ATP contents of NK-92MI and WRL-68 cells.

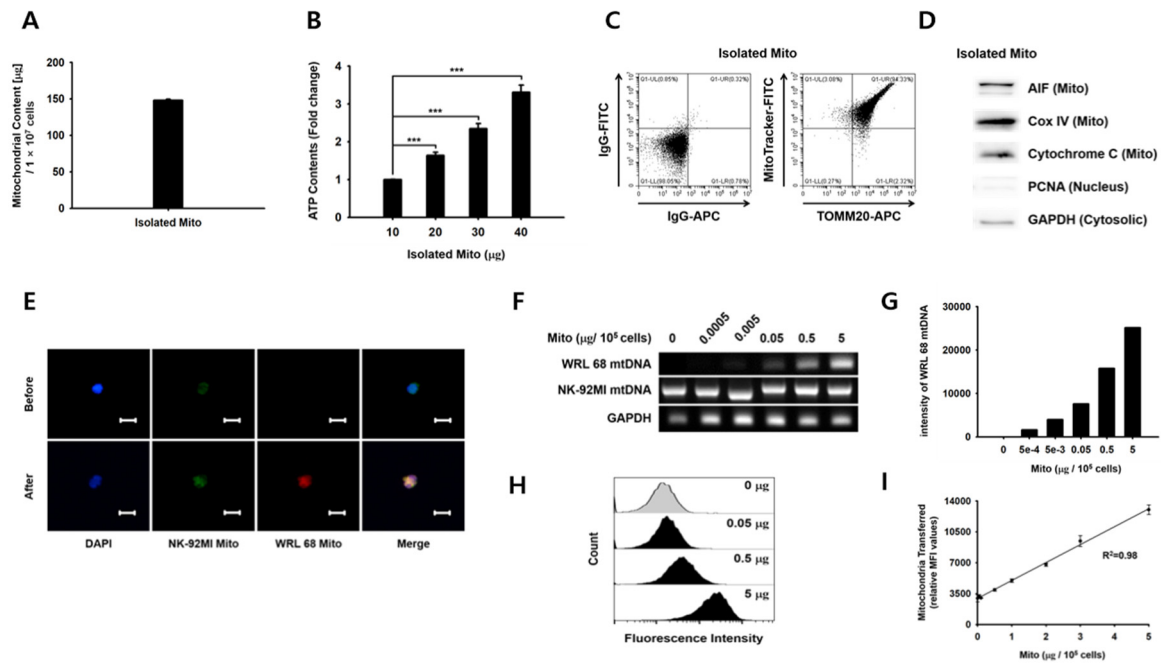


Figure S2. (A–I) Characterization of the mitochondria isolated from WRL-68 cells.

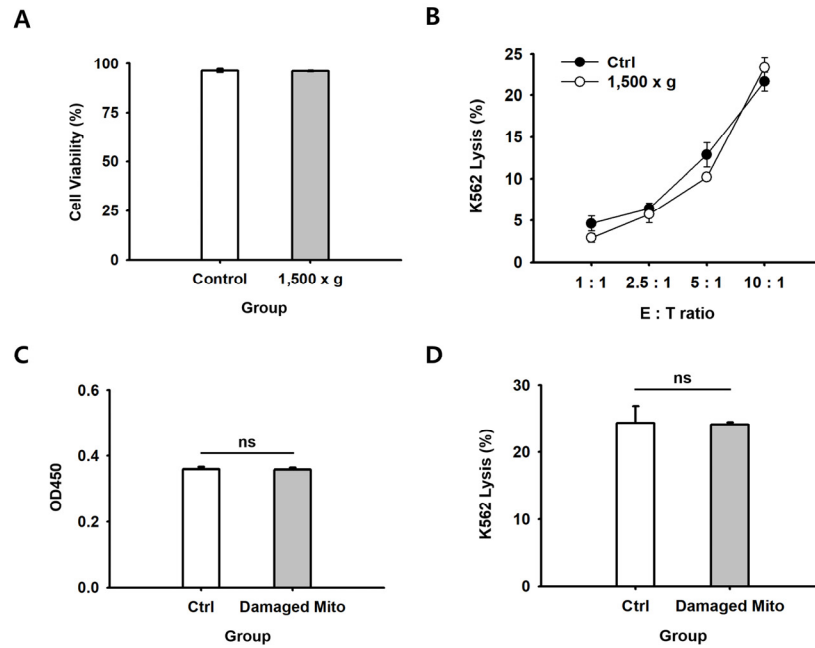


Figure S3. (A–D) The enhancement of the anticancer ability of NK-92MI cells is independent of centrifugal stimulation or the presence of damaged mitochondria.

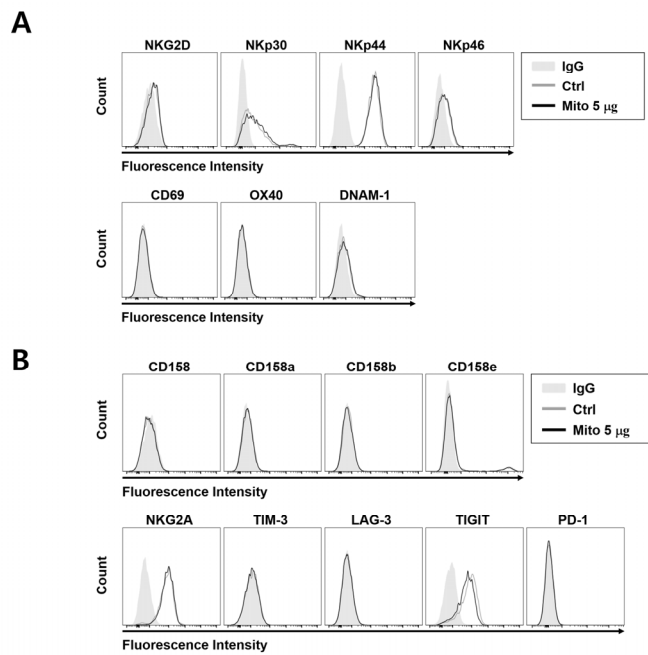


Figure S4. (A,B) Phenotypic analysis of NK-92MI cells 48 h after mitochondrial transfer.

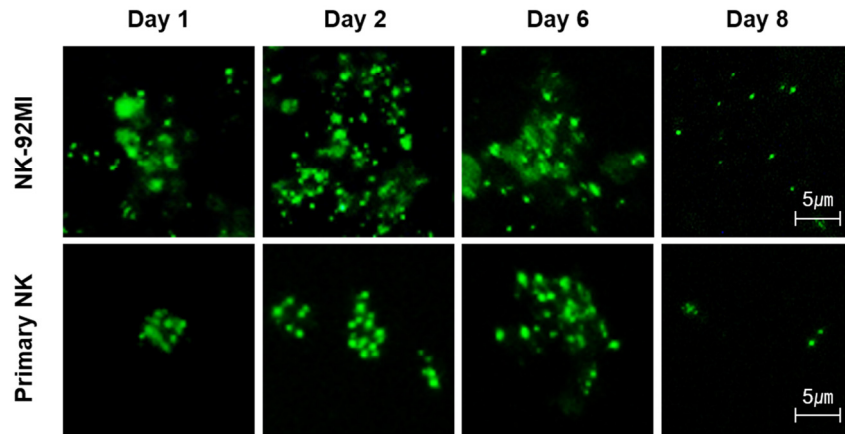


Figure S5. Stability of the transferred mitochondria.

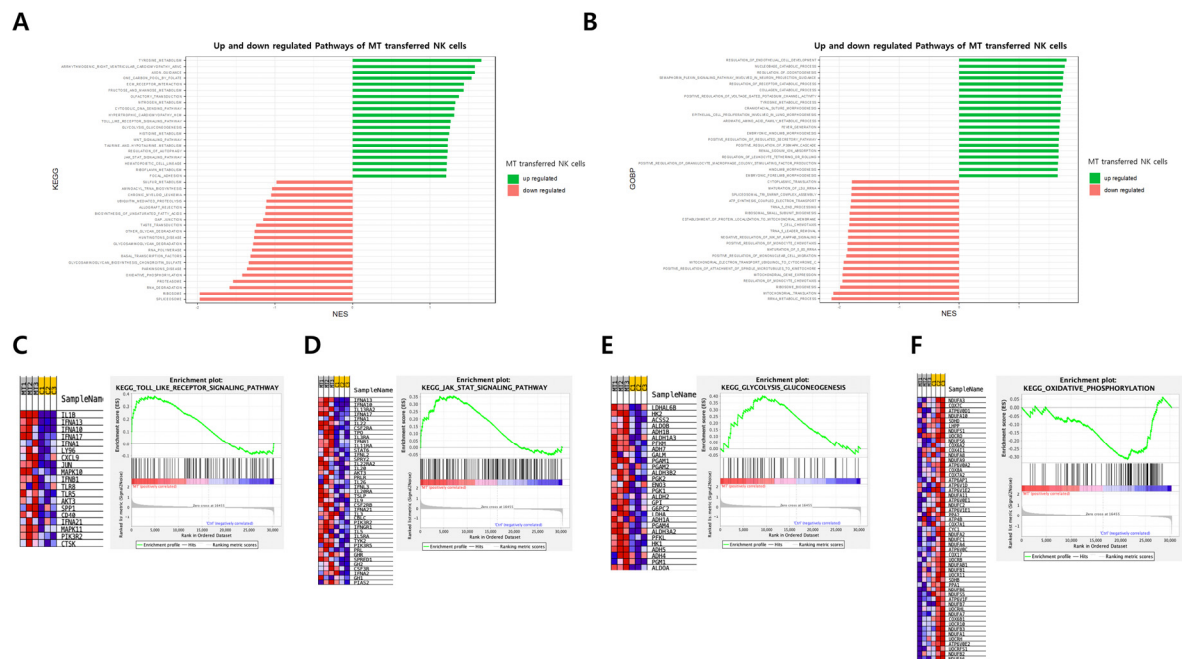


Figure S6. (A-F) Changes in gene expression profiling of NK-92MI cells after mitochondrial transfer.