

# EBV and MSI Status in Gastric Cancer: Does It Matter?

Catarina Neto do Nascimento, Luís Mascarenhas-Lemos, João Ricardo Silva, Diogo Sousa Marques, Catarina Ferreira Gouveia, Ana Faria, Sónia Velho, Rita Garrido, Rui Maio, Andreia Costa, Patrícia Pontes, Xiaogang Wen, Irene Gullo, Marília Cravo, Fátima Carneiro

**Table S1.** Neoadjuvant chemotherapy regimens according to molecular classification.

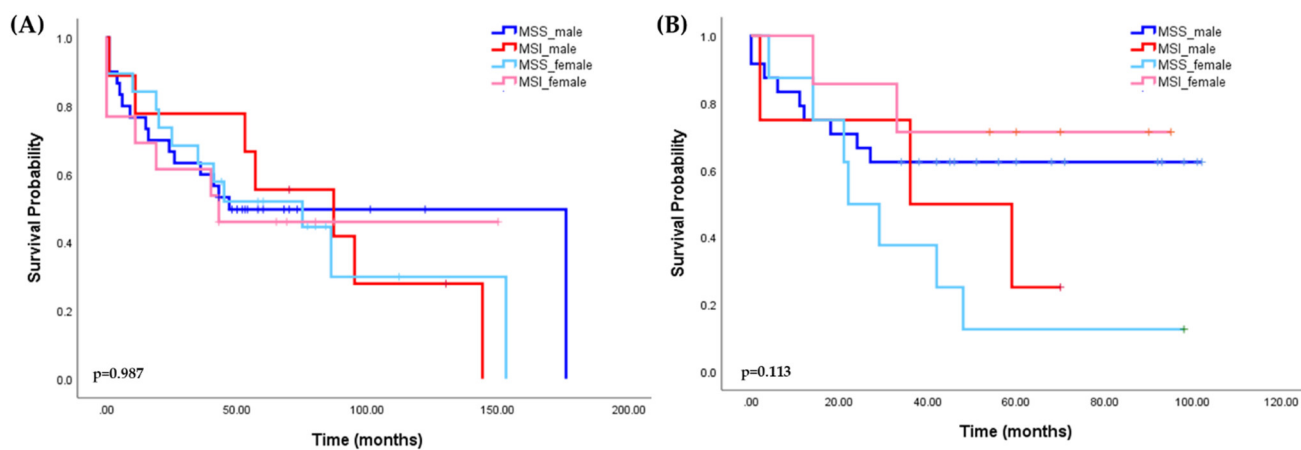
Regimen – n (%)	All tumors (n=50)*	MSS/EBV- (n=35)*	MSI-high (n=11)	EBV+ (n=4)
ECF-like	34 (66.7)	24 (68.6)	9 (81.9)	1 (25.0)
FLOT	7 (13.7)	6 (17.1)	1 (9.1)	0 (0.0)
FOLFOX	1 (2.0)	1 (2.9)	0 (0.0)	0 (0.0)
DCF-like	8 (15.7)	4 (11.4)	1 (9.1)	3 (75.0)

ECF: epirubicin + cisplatin + fluorouracil; FLOT: fluorouracil + leucovorin + oxaliplatin + docetaxel; FOLFOX: leucovorin + oxaliplatin + fluorouracil; DCF: docetaxel + cisplatin + fluorouracil; \*in one patient with MSS tumor the type of ChT performed was not available in the medical records (n=50).

**Table S2.** Clinical characterization and pathological staging for all tumors according to treatment type (surgery alone *versus* neoadjuvant ChT).

Variables	Surgery alone	Neoadjuvant ChT	p-value <sup>a</sup>
<b>Total – n (%)</b>	<b>86 (62.8)</b>	<b>51 (37.2)</b>	
<b>Sex</b>			
Male	46 (53.5)	34 (66.7)	0.130
Female	40 (46.5)	17 (33.3)	
<b>Age at diagnosis (years)</b> median (range)	70 (41-90)	64 (24-81)	0.001
<b>Pathologic (y)T<sup>b</sup></b>			
T1/2	32 (37.2)	15 (29.4)	0.353
T3/4	54 (62.8)	36 (70.6)	
<b>Pathologic (y)N</b>			
Negative	28 (32.6)	17 (33.3)	0.926
Positive	58 (67.4)	34 (66.7)	
<b>Resection status</b>			
R0	75 (87.2)	47 (92.2)	0.608
R1	7 (8.1)	2 (3.9)	
R2	4 (4.7)	2 (3.9)	
<b>MSI/EBV status</b>			
MSS/EBV-	58 (67.4)	36 (70.6)	0.383
MSI-high	54 (29.1)	11 (21.6)	
EBV+	3 (3.5)	4 (7.8)	

EBV, Epstein-Barr virus; ChT, chemotherapy; MSI-high, high microsatellite instability; MSS, microsatellite stable; <sup>a</sup>p-value of Chi-square test or Fisher's exact test compared to MSS/EBV-. The Kruskal-Wallis H test was used to analyze the continuous variable "age". <sup>b</sup> Classification according to 8th edition AJCC system for GC. y denotes the T, N, and TNM stages after neoadjuvant chemotherapy.



**Figure S1.** Overall survival by MSI status in females and males treated with direct surgery (A) or perioperative chemotherapy (B). MSI microsatellite instability; MSS, microsatellite stable.