

Figure S1. Ability of CCI to predict grade 3–5 CRAEs. Abbreviations: CCI, Charlson comorbidity index; CRAEs, chemotherapy-related adverse events.

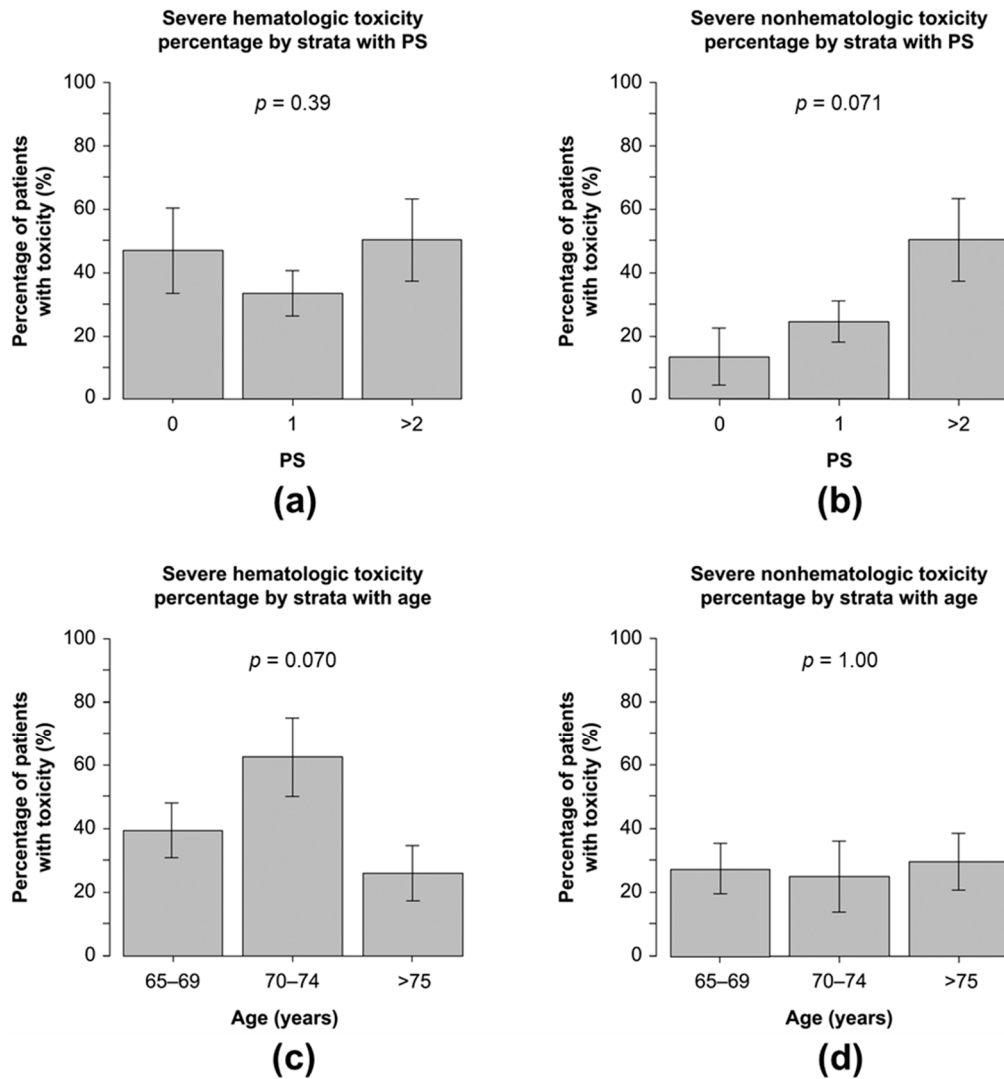


Figure S2. The percentage of participants with severe hematologic (a) and nonhematologic (b) toxicity based on ECOG PS scores or severe hematologic (c) and nonhematologic (d) toxicity based on age. Abbreviations: ECOG PS, Eastern Cooperative Oncology Group performance status.

Table S1. Prediction model and scoring algorithm for chemotherapy toxicity.

Variable	Value/Response	Score
Age (years)	≥72	2
	<72	0
Cancer type	GI or GU cancer	2
	Other cancer types	0
Planned chemotherapy dose	Standard dose	2
	Dose reduced upfront	0
Planned No. of chemotherapy drugs	Polychemotherapy	2
	Monochemotherapy	0
Hemoglobin	<11 g/dL (male),	3
	<10 g/dL (female)	
	≥11 g/dL (male),	0
	≥10 g/dL (female)	
Creatinine clearance	<34 mL/min	3
	≥34 mL/min	0
How is your hearing (with a hearing aid, if needed)?	Fair, poor, or totally deaf	2
	Excellent or good	0
No. of falls in the past 6 months	≥1	3
	None	0
Can you take your own medicine?	With some help/unable without help	1
		0
Does your health limit you in walking 100 m?	Somewhat limited/limited a lot	2
		0
During the past 4 weeks, how much of the time has your physical health or emotional problems interfered with your social activities (visiting with friends, relatives, etc.)?	Limited some of the time, most of the time, or all of the time	1
	Limited none of the time or a little of the time	0

GI, gastrointestinal; GU, genitourinary.

Table S2. Chemotherapy-related adverse events.

	Grade 3–5		Grade 3		Grade 4	
	No.	%	No.	%	No.	%
Hematologic						
Leukopenia	14	18	12	16	2	3
Neutropenia	21	28	12	16	9	12
Anemia	11	14	9	12	2	3
Thrombocytopenia	2	3	1	1	1	1
Febrile neutropenia	3	4	3	4	0	0
Nonhematologic						
Fatigue	12	16	12	16	0	0
Nausea	12	16	12	16	0	0
Mucositis oral	3	4	3	4	0	0
Diarrhea	1	1	1	1	0	0
Hypertension	1	1	1	1	0	0
Proteinuria	1	1	1	1	0	0
Edema	1	1	1	1	0	0
Hyponatremia	2	3	1	1	1	1
Hyperkalemia	2	3	2	3	0	0
Hypomagnesemia	1	1	0	0	1	1