

Figure S1. Scatter plots comparing the pre-treatment (baseline) and post-treatment (M6) circulating Let-7 family expression between SVR and non-SVR groups among the de novo HCC and non-HCC CHC patients. Let-7 levels based on $\text{Log}_{10} 2^{-\Delta\text{Ct}} (\text{Ct}_{\text{target}} - \text{Ct}_{\text{cel39}})$ method. The *p*-value was represented by Dunn's multiple comparisons test.

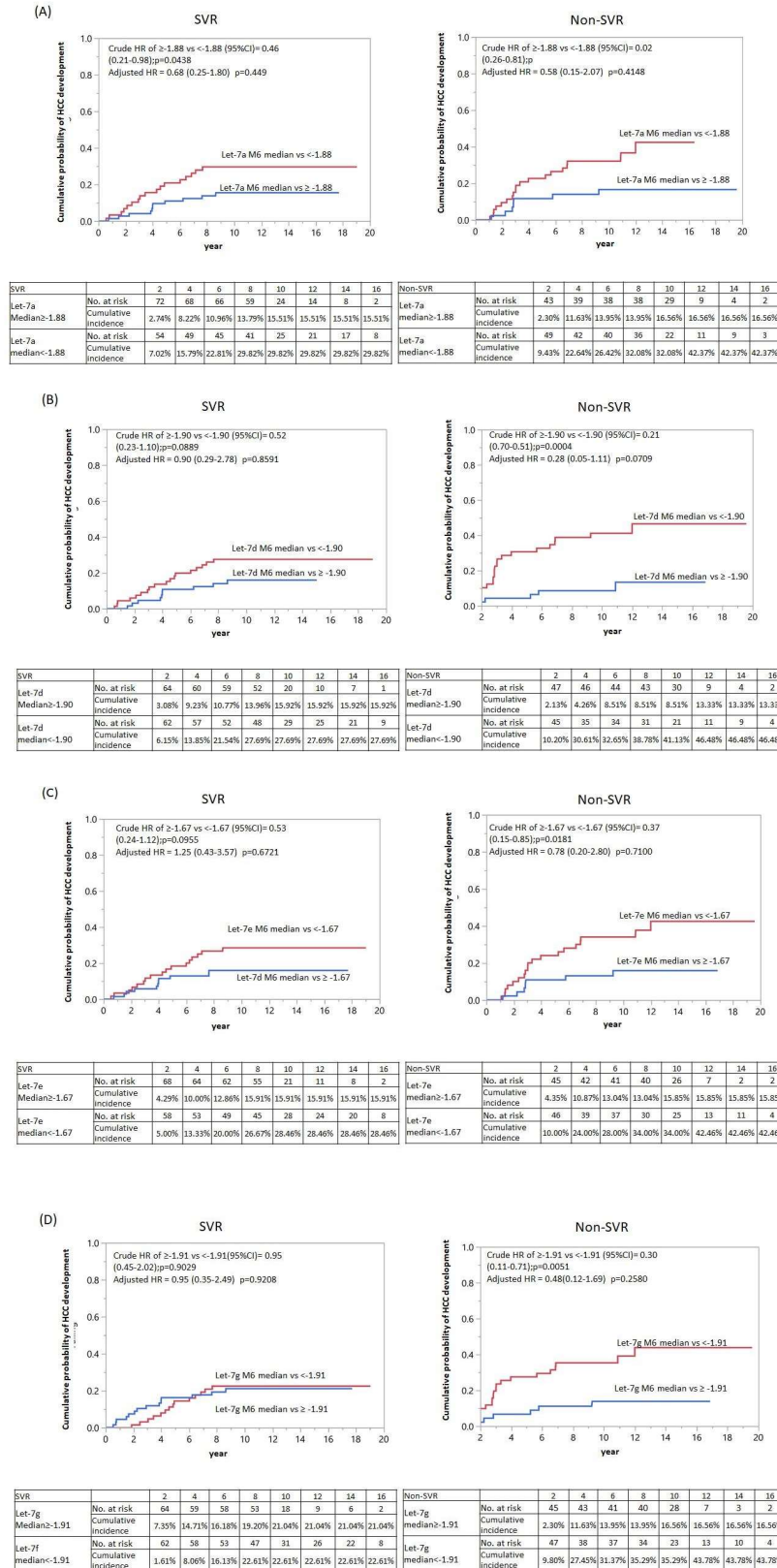


Figure S2. Kaplan-Meier survival analysis of let-7a, let-7d, let-7e, and let-7g (belong to Cluster 1) with HCC development in SVR and non-SVR group. Comparison of the cumulative probability of HCC development divided cut-off value from the median value of the distribution of Let-7 expression based on Log10 $2^{-\Delta\Delta Ct}$ method in (A) let-7a, (B) let-7d, (C) let-7e, and (D) let-7g. HR: Hazard ratio; CI: Confidence interval; HCC: Hepatocellular carcinoma.

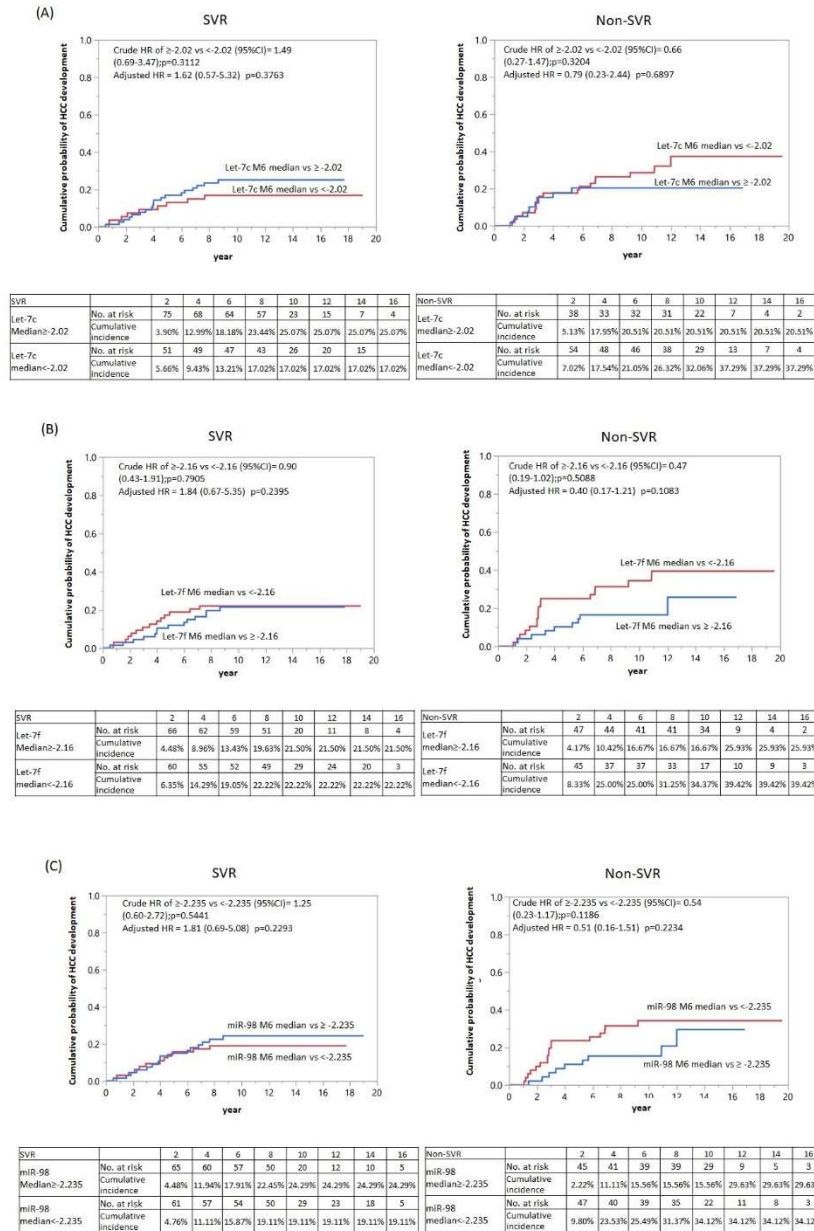


Figure S3. Kaplan-Meier survival analysis of let-7c, let-7f, and miR-98 (belong to Cluster 3) with HCC development in the SVR and non-SVR groups. Comparison of the cumulative probability of HCC development divided cut-off value from the median value of the distribution of Let-7 expression based on Log10 $2^{-\Delta\Delta Ct}$ method in (A) let-7c (B) let-7f, and (C) miR-98. HR: Hazard ratio; CI: Confidence interval; HCC: Hepatocellular carcinoma.

Table S1. De novo HCC patients ($n = 54$) characteristics by BCLC stage.

BCLC Stage	n	%	Age(yr) at HCC	p-Value	Censored yr (Post M6 to HCC)	p-Value	Tumor Size (cm)	p-Value
0	14	25.93	60.10 \pm 6.45	rf	3.37 \pm 2.25	rf	1.55 \pm 0.19	rf
A	23	42.59	61.05 \pm 8.67	ns	3.41 \pm 2.00	ns	2.76 \pm 0.83	<0.0001
B	5	9.26	60.43 \pm 13.26	ns	5.64 \pm 3.91	ns	3.44 \pm 1.12	0.0015
C	12	22.22	67.89 \pm 9.46	0.0253	5.81 \pm 2.83	0.0288	4.82 \pm 3.85	0.0493

Data are presented as the mean \pm SD. Statistical analysis was performed using Nonparametric multiple tests (BCLC stage 0 as reference). Tumor size was measured in centimeters (cm) from the largest diameter of the largest tumor. BCLC: Barcelona clinic liver cancer.

Table S2. Correlation coefficients were calculated for the let-7 family and the FIB-4 score of post-anti-viral treatment was stratified by a FIB-4 score of 3.25(M6).

Log ₁₀ 2 ^Δ -Delta Ct (M6)	FIB-4 Score <3.25				FIB-4 Score ≥3.25			
	Correlation Coefficient	Lower 95%	Upper 95%	<i>p</i>	Correlation Coefficient	Lower 95%	Upper 95%	<i>p</i>
let7a	-0.2609	-0.4139	-0.0935	0.0026	-0.1754	-0.4326	0.1083	0.2232
let7b	-0.2116	-0.3697	-0.0416	0.0153	-0.0983	-0.3666	0.1851	0.4971
let7c	-0.1415	-0.3056	0.0308	0.1069	-0.0379	-0.3129	0.243	0.794
let7d	-0.3353	-0.4793	-0.1738	<.0001	-0.0974	-0.3658	0.186	0.501
let7e	-0.2592	-0.4124	-0.0918	0.0028	-0.1721	-0.4298	0.1116	0.2321
let7f	-0.2296	-0.3859	-0.0605	0.0083	-0.1149	-0.3811	0.1689	0.4269
let7g	-0.2085	-0.3669	-0.0383	0.0169	-0.1654	-0.4242	0.1184	0.2509
let7i	-0.2181	-0.3756	-0.0484	0.0123	-0.1794	-0.436	0.1042	0.2126
miR98	-0.2742	-0.4257	-0.1077	0.0015	-0.0941	-0.3629	0.1892	0.5157

Table S3. Let-7 family associated with the development of HCC in the CHC patients with non-SVR after antiviral treatment (M6): Multivariate Cox proportional hazard regression model.

Og ₁₀ 2 ^Δ -Delta Ct		Adjusted HR (95%CI)	<i>p</i>
	M6 median: ≥-1.88 vs <-1.88	0.58 (0.15–2.07)	0.4148
Let7a	Δ post(M6)-pre(baseline) median ≥0.18 vs <0.18	0.35 (0.07–1.23)	0.1069
Let7b	M6 median: ≥-1.44 vs <-1.44	1.12 (0.33–3.71)	0.8513
	Δ post(M6)-pre(baseline) median ≥0.14 vs <0.14	1.20 (0.37–3.74)	0.7545
Let7c	M6 median: ≥-2.02 vs <-2.02	0.79 (0.23–2.44)	0.6897
	Δ post(M6)-pre(baseline) median: ≥0.198 vs <0.198	1.20 (0.35–4.07)	0.7639
Let7d	M6 median: ≥-1.90 vs <-1.90	0.28 (0.05–1.11)	0.0709
	Δ post(M6)-pre(baseline) median: ≥0.170 vs <0.170	0.88 (0.26–2.82)	0.8367
Let7e	M6 median: ≥-1.67 vs <-1.67	0.78 (0.20–2.80)	0.7100
	Δ post(M6)-pre(baseline) median ≥0.150 vs <0.150	0.99 (0.24–3.49)	0.9885
Let7f	M6 median: ≥-2.16 vs <-2.16	0.40 (0.17–1.21)	0.1083
	Δ post(M6)-pre(baseline) median: ≥0.0918 vs <0.0918	0.83 (0.24–2.70)	0.7557
Let7g	M6 median: ≥-1.91 vs <-1.91	0.48 (0.12–1.69)	0.2580
	Δ post(M6)-pre(baseline) median: ≥0.12 vs <0.12	0.50 (0.11–1.59)	0.2560
Let7i	M6 median: ≥-1.696 vs <-1.696	0.09(0.01–0.45)	0.0022 *
	Δ post(M6)-pre(baseline) median: ≥0.177 vs <0.177	0.45 (0.10–1.55)	0.2153
miR-98	M6 median: ≥-2.235 vs <-2.235	0.51(0.16–1.51)	0.2234
	Δ post(M6)-pre(baseline) median: ≥0.069 vs <0.069	0.67 (0.19–2.16)	0.5017