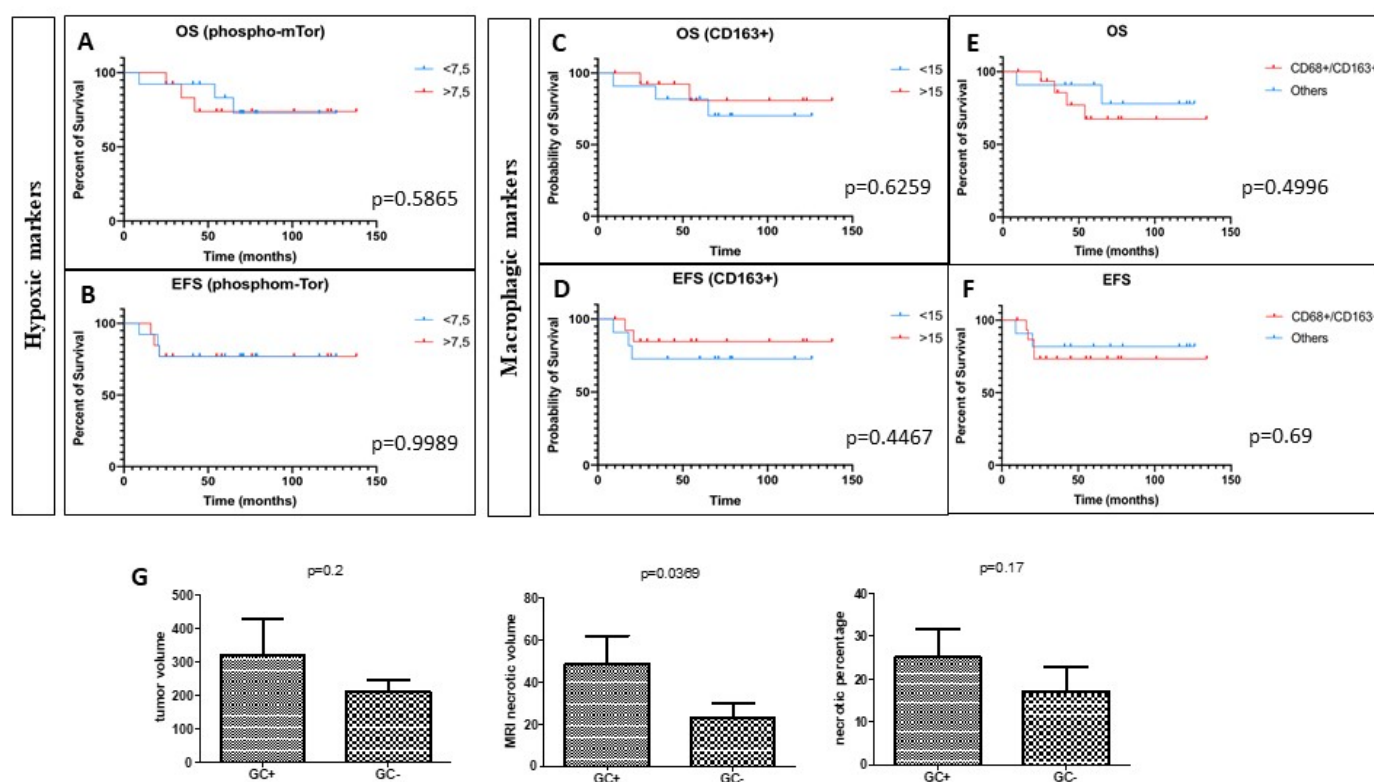


Article

# Together Intra-Tumor Hypoxia and Macrophagic Immunity Are Driven Worst Outcome in Pediatric High-Grade Osteosarcomas

Charlotte Nazon <sup>1</sup>, Marina Pierrelvein <sup>2</sup>, Thibault Willaume <sup>3</sup>, Benoît Lhermitte <sup>2,4</sup>, Noelle Weingertner <sup>4</sup>, Antonio Di Marco <sup>5</sup>, Laurent Bund <sup>6</sup>, Florence Vincent <sup>1</sup>, Guillaume Bierry <sup>3</sup>, Anne Gomez-Bouchet <sup>7</sup>, Françoise Redini <sup>8</sup>, Nathalie Gaspar <sup>9,10,11</sup>, Monique Dontenwill <sup>2</sup> and Natacha Entz-Werle <sup>1,2,\*</sup>

## Supplementary Materials:



**Supplemental Figure S1.** Complementary cross-correlations between hypoxic and macrophagic biomarkers. (A,B) OS and EFS distributions according to the pmTor expression (optimal cutpoint at 7.5%). (B–F) OS and EFS distributions according to macrophagic markers that are CD163 and the combination of CD163 and CD68. (G) Bar graph representations combining MRI data to the presence of giant cells (GC). A significant correlation was evidenced between GC presence and a higher necrotic volume ( $p=0.0369$ ).