

Supplementary Materials: Non-Invasive Monitoring of Increased Fibrotic Tissue and Hyaluronan Deposition in the Tumor Microenvironment in the Advanced Stages of Pancreatic Ductal Adenocarcinoma

Ravneet Vohra, Yak-Nam Wang, Helena Son, Stephanie Totten, Akshit Arora, Adam Maxwell and Donghoon Lee

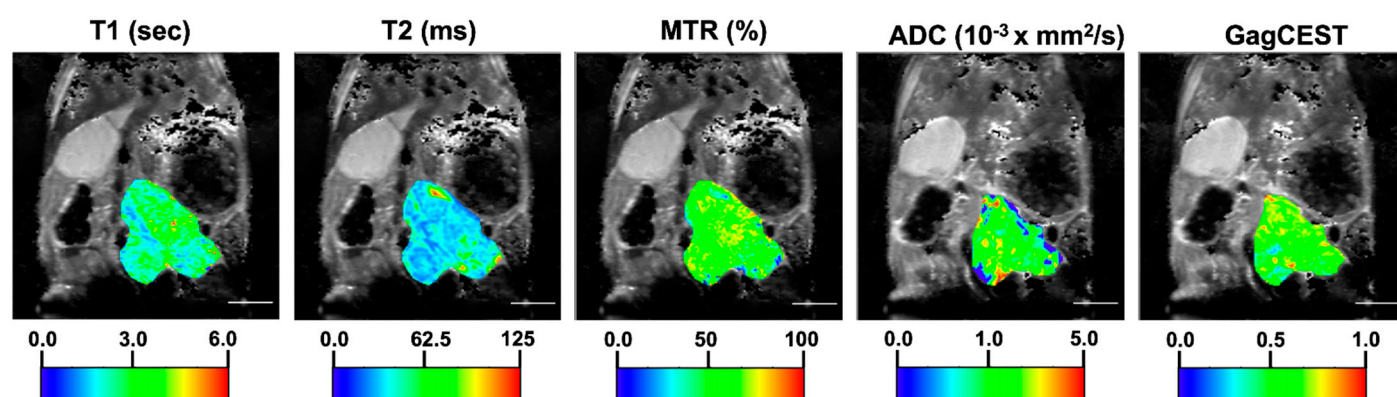


Figure S1. Representative colored maps with T1, T2, MTR, ADC and GagCEST measures of pancreatic tumor from a KPC mouse. Scale bar = 5 mm.

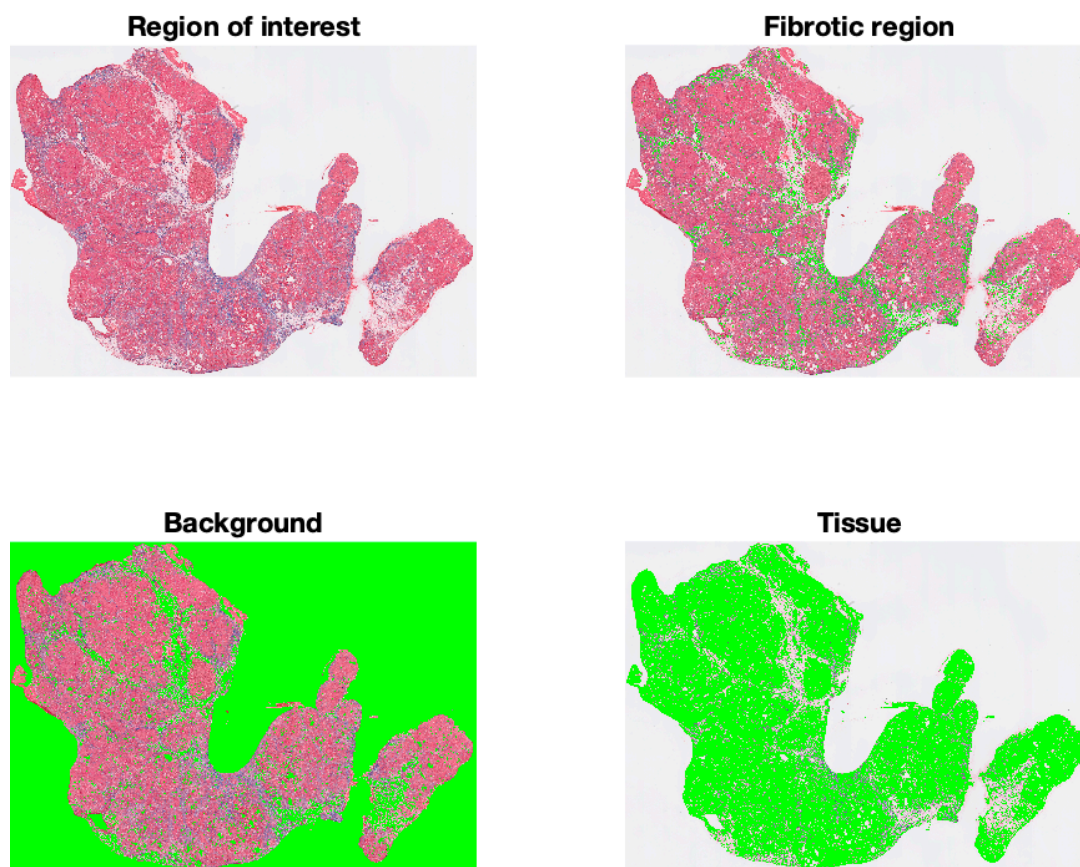


Figure S2. Representative image of methodology demonstrating the technique used to quantify connective tissue deposition in the region of interest in the pancreatic tumor of KPC mouse.