

Fibrosis in Mesothelioma: Potential Role of Lysyl Oxidases

Lara Perryman ¹ and Steven G. Gray ^{2,*}

¹ Drug Discovery Department, Pharmaxis Ltd., Sydney, NSW 2086, Australia;
lara.perryman@pharmaxis.com.au

² Thoracic Oncology, Labmed Directorate, St James's Hospital, D08 RX0X Dublin, Ireland

* Correspondence: sgray@stjames.ie

Simple Summary: Why do most drugs have limited effects in difficult-to-treat cancers such as mesothelioma? One explanation commonly given in response is that not enough drug can get into the tumor to generate an anti-tumor effect. Fibrosis is a common element of mesothelioma that causes the area around the cancer to stiffen. By itself, fibrosis makes breathing difficult and causes a poor quality of life, but it also acts as a barrier stopping drugs from getting into the tumor, and limits the immune system's ability to detect and access the tumor to kill it. In this review, we discuss how a family of proteins called lysyl oxidases is associated with fibrosis in many disease settings, including solid tumors and mesothelioma, the current status of efforts to therapeutically target these proteins and how targeting this family may have therapeutic applicability in the treatment and management of mesothelioma.

Abstract: Immunotherapies (such as checkpoint inhibitors) and standard chemotherapies (such as cisplatin) have limitations in the successful treatment of malignant pleural mesothelioma (MPM). Fibrosis is the accumulation of collagen in the extracellular matrix (ECM) of tissues, making them denser than that of healthy tissues and thereby affecting drug delivery and immune cell infiltration. Moreover, fibrosis severely affects the patient's breathing and quality of life. The production of collagen and its assembly is highly regulated by various enzymes such as lysyl oxidases. Many solid tumors aberrantly express the family of lysyl oxidases (LOX/LOXL). This review examines how LOX/LOXLs were found to be dysregulated in noncancerous and cancerous settings, discusses their roles in solid tumor fibrosis and pathogenesis and explores the role of fibrosis in the development and poor clinical outcomes of patients with MPM. We examine the current preclinical status of drugs targeting LOX/LOXLs and how the incorporation of such drugs may have therapeutic benefits in the treatment and management of patients with MPM.

Keywords: malignant pleural mesothelioma; fibrosis; collagen; lysyl oxidase; therapy; extracellular matrix; biomarker; stroma

Citation: Perryman, L.; Gray, S.G. Fibrosis in Mesothelioma: Potential Role of Lysyl Oxidases. *Cancers* **2022**, *14*, 981. <https://doi.org/10.3390/cancers14040981>

Academic Editor: Mark Gorrell

Received: 18 January 2022

Accepted: 8 February 2022

Published: 15 February 2022

Publisher's Note: MDPI stays neutral with regard to jurisdictional claims in published maps and institutional affiliations.



Copyright: © 2022 by the authors. Licensee MDPI, Basel, Switzerland. This article is an open access article distributed under the terms and conditions of the Creative Commons Attribution (CC BY) license (<https://creativecommons.org/licenses/by/4.0/>).

1. Introduction

Malignant pleural mesothelioma (MPM) is an aggressive inflammatory cancer associated with exposure to asbestos [1]. Industrialized nations' use of asbestos has declined, but asbestos continues to be exported and used in developing nations. Despite its ban, environmental exposure is still widespread [1–4]. Early-stage MPM patients typically present with shortness of breath, coughing and chest pains, which is attributed to pleural thickening and pleural effusion. Pleural effusion is an accumulation of fluid in the space between the lungs and the chest wall that can be eased via thoracentesis (aspiration of fluid) or chemical pleurodesis (intrapleural administration of talc obliterating the pleural space). Computed tomography (CT) imaging is routinely performed to detect pleural fluid, present in 90% of MPM patients, although biopsies are required for a definitive diagnosis [5]. Pleural effusion is caused by an imbalance

between pleural fluid production and an inadequacy of the lymphatic drainage system, which again limits respiration. As MPM advances, tumor growth further restricts breathing, diminishing quality of life. Untreated, MPM has a median survival time of 8–12 months [6] and a 5-year survival rate from diagnosis of ~7% [7]. For a long time, first-line standard of care (SOC) was a combination of pemetrexed/raltitrexed and cisplatin chemotherapy [8], which results in a response rate of ~40% and is non-curative [9]. Recently, the addition of Bevacizumab to this regimen was approved for first-line therapy [10]. The dual checkpoint inhibitor immunotherapy (Ipilimumab/Nivolumab) was FDA-approved for use in treatment of naive mesothelioma patients [11], based on evidence generated in the CheckMate 743 trial [12]. Despite showing only similar efficacy to chemotherapy for both median progression-free survival (PFS) and objective response rate (ORR), the dual-immunotherapy regimen demonstrated significantly improved duration of response (DOR). Critically, at 24 months, 41% of patients treated with the dual-immunotherapy regimen remained alive as compared with 27% of patients treated with chemotherapy. Dual-immunotherapy may become the new standard of care for MPM [12]. Checkpoint inhibitor trials such as the CONFIRM-1 trial (NCT03063450) suggest potential for patients who have progressed on standard first-line therapy [13]. The cisplatin, pemetrexed and checkpoint inhibitors combination studies, such as the JME-001 (UMIN000030892) and PrE0505 (NCT02899195), in unresectable, malignant pleural mesothelioma are potential first-line therapies [14,15].

Objective response rates for checkpoint inhibitors in MPM, such as in cisplatin/pemetrexed trials, are limited to a proportion (20–30%) of patients [16,17]. There is still an urgent clinical need to identify new translational targets or novel therapeutic approaches to improve patient outcomes. Multi-tyrosine kinases inhibitors may have potential as a therapeutic intervention in MPM [18]. Other examples of potential novel treatments currently in clinical trials include: BRCA1 positivity for sensitivity to vinorelbine (Clinical Trials.gov NCT02139904) [19,20], poly (ADP-ribose) polymerase (PARP) inhibitors (NCT03654833) [20], inhibitors of CDK4/6 (e.g., NCT03654833), inhibitors of EZH2 (NCT02860286) [1], or arginine depletion in Argininosuccinate Synthetase 1-Deficient tumors (NCT02709512, NCT02709512) [21,22].

The deposition of ECM is vital for tissue repair and is reversible in healthy tissue. Excessive accumulation of ECM proteins, such as collagen and fibronectin, leads to organ malfunction and is called fibrosis. The pleural thickening in MPM patients is thought to contain fibrotic tissue, thereby increasing tissue density and stiffness compared to healthy tissues. These ECM alterations potentially affect drug delivery, immune cell infiltration and lymphatic drainage causing pleural effusion, ultimately leading to a poor quality of life for patients [23].

The production of collagen and its assembly is highly regulated by various enzymes such as lysyl oxidases. It is now well established that many solid tumors aberrantly express the family of lysyl oxidases (LOX/LOXLs) [23]. Lysyl oxidases are copper-dependent amine oxidases that catalyze the enzymatic step in the crosslinking of collagen and elastin [24]. The lysyl oxidase family consists of five paralogues: LOX and LOX-Like 1, 2, 3 and 4 (LOXL1, LOXL2, LOXL3 and LOXL4) [25]. The expression of LOX/LOXL is considered an indicator of fibrosis and correlates to tissue stiffness in both fibrotic diseases and cancer. Upregulation of LOX/LOXL is common in cancers and fibrotic diseases, whereas in rare cancers such as mesothelioma comparatively little is known. Idiopathic Pulmonary Fibrosis (IPF) is an interstitial fibrosis in the lining of the alveoli that develops in response to inflammation and has an upregulation of lysyl oxidases [26]. In mesothelioma, asbestos accumulation in the pleural space induces chronic inflammation, initiating malignant transformation of mesothelial cells and eventually fibrosis [1,3]. MPM forms a sheath-like tumor around the lung, which is histologically distinct from IPF. It is anticipated there are many parallels in the underlying molecular mechanism of all fibrotic diseases, including the upregulation of lysyl oxidases.

Generally, lysyl oxidases are secreted proteins; however, additional intracellular roles for these enzymes have been identified. Overexpression of LOXL2 is associated with a more aggressive invasive phenotype, which is associated with an epithelial-mesenchymal-transition (EMT) phenotype and drives cancer metastasis [27]. EMT activation can be due to both mechanosensing/mechanotransduction and potentially intracellular mechanisms of LOX/LOXL2. LOXL2 can translocate to the nucleus and stabilize the transcription factor Snail, an integral step in EMT [27,28]. Additional critical roles have been shown for LOX/LOXL in both cancer-associated fibroblasts (CAFs) and fibrocyte-mediated regulation of the tumor microenvironment [29–33]. Lysyl oxidases are important in multiple mechanisms that induce fibrosis and disease progression and hamper response to current therapies.

2. Altered Expression of Lysyl Oxidases in Non-Cancerous Settings

LOX/LOXLs activity and expression is altered in many non-cancerous lung diseases, all of which have a degree of fibrosis, as summarized in Table 1.

Table 1. Selected examples of known LOX/LOXL family links with various non-cancerous settings.

Idiopathic Pulmonary Fibrosis (IPF)	
β -aminopropionitrile (BAPN) found to inhibit pulmonary fibrosis in a lung model of silicosis	[34]
LOX activity induced in bleomycin-induced lung fibrosis and alleviated by treatment with LOX/LOXL inhibitor	[35–37]
In IPF patients, elevated serum levels of LOXL2 are associated with an increased risk for disease progression.	[38]
LOX activity promotes the progress of EMT in a paraquat model of IPF.	[39,40]
A comparative analysis shows that LOX/LOXL2 are elevated in IPF fibroblasts, while LOXL2/3 activity is crucial for fibroblast-to-myofibroblast transition (FMT).	[41]
Elevated serum levels of LOXL2 are associated with rheumatoid arthritis -associated interstitial lung disease (RA-ILD).	[42]
Increased collagen fibril thickness in IPF versus non-IPF lung tissues is correlated with increased levels of LOXL1/LOXL2 protein, and a decrease in LOX protein expression.	[43]
Loss of LOXL1 activity prevents the development of fibrosis in a transforming growth factor- β 1-induced model of pulmonary fibrosis.	[44]
In bleomycin-induced lung fibrosis, nuclear expression of LOXL2 appears to be a major element in the progression of lung fibrosis.	[45]
LOXL2 inhibitor induces collagen turnover in ex vivo lung explants from patients with IPF.	[46]
In a study comparing extracellular vesicles (EVs) from IPF-derived pulmonary fibroblast cell lines versus normal pulmonary fibroblast cell lines for differentially expressed proteins, LOXL1 was found in IPF EVs.	[47]
Kidney Fibrosis	
LOXL2 is expressed in compartments of renal tissue, where it appears to contribute to the progression of tubulointerstitial fibrosis.	[48]
LOXL2 inhibition significantly reduced interstitial fibrosis in a mouse model of renal fibrosis.	[49]
Elevated serum LOX and LOXL2 levels may act as a potential biomarker for kidney fibrosis.	[50]
In a murine model of cyclosporine induced nephropathy, pan-LOX and LOXL2 specific inhibitors attenuated kidney damage.	[51]
Liver Fibrosis	
Increased LOX levels both in tissue and serum is associated with collagen in the	[52–55]

extracellular space in animal models of hepatic fibrosis.	
Hepatic stellate cell activation results in elevated LOX mRNA and protein in liver fibrosis.	[56–59]
Lysyl oxidase activity levels increase in patient serum from chronic persistent hepatitis to chronic active hepatitis to cirrhosis.	[60]
In a mouse model of liver fibrosis, increased steady state levels of LOXL mRNA occur early in fibrosis development.	[61]
Expression of LOX and LOXL2 in hepatocytes is linked to liver fibrosis.	[62]
Reduced levels of miR-29b are associated with elevated levels of LOX in models of liver fibrosis.	[63]
In patients with severe obesity or obstructive sleep apnoea, serum levels of lysyl oxidase can act as a potential biomarker of liver fibrosis.	[64]
Targeting of LOXL2 is associated with anti-fibrotic effects in a mouse model of hepatic fibrosis.	[65]
Links between LOXL2, insulin resistance and fibrosis accumulation in non-alcoholic fatty liver disease (NAFLD) are identified.	[66]
LOXL1 identified as a candidate therapeutic target for ameliorating liver fibrosis progression in cirrhosis, and inhibition of human hepatic stellate cell mediated fibrogenesis.	[67,68]
First demonstration that a small molecule dual inhibitor of LOXL2/3 (PXS-5153A) can ameliorate fibrosis in models of liver fibrosis and myocardial infarct	[69]
Patients with HCV who demonstrated sustained responses to antiviral therapy were shown to have regression in liver fibrosis associated with decreased LOXL2 expression.	[70]
anti-LOXL2 based therapy in a mouse model of liver fibrosis results in reduced fibrosis via accelerated collagenolytic activity by macrophages.	[71]
miR-15b/16 are downregulated in activated hepatic stellate cells (HSCs), and overexpression of these miRs is found to suppress LOXL1 expression in HSCs and induce a fibrogenic response.	[72,73]
Selective deletion of LOXL1 in HSCs in a murine NAFLD model ameliorates fibrosis, and serum levels of LOXL1 are positively correlated with histological fibrosis progression in NAFLD patients.	[74]
Amyotrophic Lateral Sclerosis (ALS)	
LOX transcripts are overexpressed in patient lumbar spinal cord samples.	[75]
LOX activity increased in animal model of ALS.	[76]
Systemic Sclerosis	
LOX mRNA transcripts overexpressed in fibroblasts from patients with systemic sclerosis	[77,78]
Elevated levels of LOX found in the serums of patients with systemic sclerosis	[78,79]
Elevated levels of LOX and LOXL2 in skin and lungs of systemic sclerosis patients	[37]
Elevated serum LOX levels and idiopathic pulmonary arterial hypertension (iPAH) found in patients with systemic sclerosis	[80]
LOXL4 activity as a cause of cutaneous fibrosis in fibroblasts from patients with system sclerosis identified	[81]

2.1. Idiopathic Pulmonary Fibrosis (IPF)

IPF is a clinically challenging condition of the lung with significant interstitial fibrosis, is progressive, irreversible and has a poor prognosis with a median survival of 2–4 years [82]. Recently, a significant amount of evidence has linked the immune microenvironment to the development of fibrosis in IPF [83–85], but what evidence links lysyl oxidase activity to the fibrotic process? Numerous studies on bleomycin-induced

lung fibrosis have confirmed the induction of LOX expression and the amelioration of fibrosis by the pan-lysyl oxidase inhibitor β -aminopropionitrile (BAPN) (Table 1) [35–37,86]. Elevated activity of LOX has been confirmed for other models of IPF, for example in paraquat-induced fibrosis [39,40] (Table 1). Elevated levels of LOXL2 also play important roles in IPF with links to disease progression risk [38], increased fibroblast-to-myofibroblast transition (FMT) [41] and increased collagen fibril thickness [43]. Moreover, the nuclear localization of LOXL2 protein has been associated with the progression of lung fibrosis [45] and suggests a dynamic regulatory role (Table 1). In this regard, inhibition of LOXL2 in *ex vivo* lung explants from patients with IPF was shown to induce collagen turnover [46] (Table 1). LOXL1 and LOXL3 have also been identified in the pathogenesis of IPF [41,43,47] (Table 1).

2.2. Other Non-Cancerous Disease States

A significant body of evidence now also links lysyl oxidases to other non-cancerous fibrotic conditions including renal fibrosis, liver fibrosis and sclerosis (Table 1). In kidney fibrosis, LOXL2 appears to be a major factor with potential utility as a candidate biomarker for monitoring kidney fibrosis [50], and is a critical element in tubulointerstitial fibrosis [48] (Table 1). In models of renal fibrosis, therapeutically targeting LOXL2 activity is able to attenuate the main symptoms [49,51],

Within the setting of the liver, fibrosis is correlated with increased LOX levels in both the tissue and serum of patients, and there is a further association with altered collagen in the extracellular space in animal models of hepatic fibrosis [52–55,64] (Table 1). Elevated LOX levels in patient serum have since been mapped along the liver fibrosis continuum from chronic persistent hepatitis to chronic active hepatitis to cirrhosis [60]. A critical element in the increased LOX activity and fibrosis in liver tissue involves the activation of hepatic stellate cells (HSCs) [56–59].

In addition to LOX, links between liver fibrosis and LOXLs have also been identified, spanning non-alcoholic fatty liver disease (NAFLD) to cirrhosis [61,62,67,68,74]. Intriguingly, microRNAs (miRNAs) that have been found to target LOX/LOXLs have been identified in liver fibrosis [63,72,73] (Table 1). It is interesting to note that some of the miRNAs identified have both altered expression in and potential therapeutic impact on MPM. The accumulated evidence that LOX/LOXL activity plays important roles in liver fibrosis suggests that targeting these may have potential therapeutic benefit by reducing fibrosis [65,67–69,71,74] (Table 1).

Sclerosis encompasses a diverse number of pathological conditions and fibrosis is associated with both amyotrophic lateral sclerosis (ALS) and systemic sclerosis. LOX expression and activity are increased in both animal models and patient samples of ALS [75,76], and LOX, LOXL2 and LOXL4 are elevated in the fibroblasts and serums of patients with systemic sclerosis [37,77–81] (Table 1).

Other non-cancerous settings for which lysyl oxidases have been identified to play significant roles include cardiac disease [87–90], complications associated with diabetes (for example diabetic retinopathy) [91–94], bone remodeling and osteoporosis [95,96].

3. Altered Expression of Lysyl Oxidases in Cancerous Settings

Fibrosis is also commonly associated with many solid tumors [97,98]. In the following sections, we summarize the pertinent information linking LOX/LOXL activity to some of the main solid cancers in Table 2.

Table 2. Selected examples of known LOX/LOXL family links with various cancers.

Breast Cancer	
Lysyl oxidases associated with chemotherapy resistance in triple negative breast cancer	[99]
Stromal expression of LOXL2 is associated with tumor aggression and disease-specific mortality.	[100]

Oncostatin-M-induced ECM remodelling via upregulated LOXL2	[101]
Inhibition of LOXL4 decreased breast cancer cell proliferation, migration, and metastasis in vitro and in vivo.	[102,103]
LOXL2 promotes tumour lymph-angiogenesis and lymph node metastasis.	[104]
LOX expression is significantly higher in triple negative breast cancers versus other breast cancer subtypes.	[105]
LOXL2 involved with breast cancer metastasis to the lung	[106]
LOXL2 expression may serve as a biomarker for breast cancer and is detectable in serum and urine.	[107]
LOX and LOXL proteins are located in the stromal reaction of ductal carcinoma in situ (DCIS) breast cancer.	[108,109]
Renal Cell Cancer (RCC)	
LOX and LOXL2 significantly elevated in RCC and associated with poorer overall survival (OS)	[110]
LOXL2 associated with migration, invasion and EMT transition of RCC	[111]
Primary RCC culture endogenously express LOX, and plays major roles in progression via activities on cellular adhesion, migration, and collagen stiffness.	[112]
Early demonstration of overexpression of LOX mRNA in RCC	[113]
Non-Small Cell Lung Cancer (NSCLC)	
A novel LOX polymorphism G473A is associated with increased risk for lung cancer.	[114–116]
LOXL1 promotes lung cancer tumorigenicity via collagen matrix remodelling and collagen fibre alignment in vitro and in vivo.	[33]
High expression of LOX and LOXL2 mRNA and protein is associated with poor prognosis in NSCLC patients.	[117–120]
Low expression of the LOXL2 protein in adenocarcinomas is associated with a poorer N-stage, a higher pathological TNM stage and poorer differentiation.	[121]
The miR-200/ZEB1 axis drives lung cancer metastasis through LOXL2.	[122]
LOX activity is associated with increased invasion and migration of hypoxic NSCLC cells.	[123]
Reduced levels of microRNA-29a (miR-29a) in lung cancer is associated with overexpression of LOXL2 and concomitant fibrosis.	[124]
Pancreatic Cancer (PDAC)	
Tumor stiffening reversion through collagen crosslinking inhibition improves T-cell migration and anti-PD-1 treatment.	[125]
LOXL2 is highly up-regulated (≥ 20 -fold) in the PDAC secretome.	[126]
High expression of LOXL2 protein is associated with worse DFS and OS in patients with PDAC.	[127]
Increased levels of LOX, LOXL1, and LOXL2 expression in PDAC are associated with poor responses to chemotherapy by limiting drug distribution, and inhibition of LOX enhances drug efficacy.	[128,129]
In an orthotopic PDX model of PDAC, targeting LOXL2 led to accelerated tumour growth, and poorer overall survival.	[130]
Levels of LOX are a potential prognostic markers for the prognosis of pancreatic cancer patients.	[131]
Liver Cancer	
Reduced levels of miR-29a in hepatocellular carcinoma (HCC) lead to elevated expression of its known targets LOX and LOXL2.	[132]
A circRNA network has been identified that activates LOX transcription in HCC.	[133]
High LOXL3 expression predicts poor outcomes for patients with HCC, and is correlated with immune infiltrates and T-cell activation.	[134]
High LOX expression is associated with an higher recurrence rate and poorer OS in patients with HCC.	[135,136]

LOXL2 is overexpressed in HCC and positively correlated with tumour grade, metastasis, and poor OS.	[137–139]
LOXL2 is significantly overexpressed in human HCC sera and may act as a good biomarker for HCC.	[140]
LOXL4 is upregulated in HCC tissues and associated with poor prognosis. Exosomal-mediated transfer of LOXL4 between HCC cells and human umbilical vein endothelial cells (HUVECs) promotes cell migration and angiogenesis, respectively	[141]

3.1. Breast Cancer

The role of collagen and fibrosis in breast cancer is well-established, particularly with respect to invasive breast cancer [142]. The initial observations were that lysyl oxidases are located in the stromal region of ductal carcinoma in situ (DCIS) breast cancer [108,109]. The highly aggressive triple negative breast cancer subtype is linked to higher LOX expression [105] (Table 2). Moreover, strong links have been found between LOXL2, metastasis [101,104,106], and higher mortality [100], and LOXL2 is a potential biomarker for cancer detection [107]. Finally in pre-clinical studies, targeting LOXL4 has been found to reduce breast cancer cell proliferation, migration, and metastasis in vitro and in vivo [102,103] (Table 2).

3.2. Renal Cell Cancer

Intratumoral fibrosis is a common element in clear cell renal cell carcinoma (RCC) [143], and has been suggested as a potential marker of prognosis [144]. Elevated LOX gene expression occurs in RCC [113] (Table 2) and is linked to poorer overall survival (OS) [110]. Pre-clinical studies of RCC progression showed increased LOX activity is associated with cellular adhesion, migration, and collagen stiffness [112]. LOXL2 has also been found to be significantly elevated in RCC and with poorer OS [110]. Similar to LOX, LOXL2 activity affects migration, invasion and progression to EMT in RCC [111].

3.3. Pancreatic Cancer

Pancreatic cancer (PDAC) is another tumor with well-established links to fibrosis [145] (Table 2). High expression of LOX is associated with a significantly shorter progression-free survival (PFS) [131] and poor response to chemotherapy [128,129]. The inhibition of LOX activity with a LOX-specific antibody enhanced efficacy of gemcitabine treatment in animal models [129].

3.4. Liver Cancer

In hepatocellular carcinoma (HCC), it is now well established that lysyl oxidase activity is significantly elevated in the tumors (Table 2) [135,136]. This elevated expression is associated with poor prognosis (OS) [134–139], higher recurrence rates [135,136], greater metastasis [137–139] but is also linked to immune infiltrates and T-cell activation (Table 2). Levels of LOXL2 in human sera have been suggested as a potential biomarker for HCC detection [140].

3.5. Lung Cancer

High expression of LOX and LOXL2 mRNA and protein is for the most part associated with poor prognosis in non-small cell lung cancer (NSCLC) patients [117–120] (Table 2). However, one histologically-based study suggests low expression of LOXL2 is associated with a poorer N-stage, higher pathological TNM stage and poorer differentiation in NSCLC patients [121]. High expression of LOXL1 in cancer-associated fibroblasts (CAFs) has been shown to enhance NSCLC tumorigenicity [33] (Table 2), while increased LOX activity also helps promote increased invasion and migration of NSCLC [123] (Table 2).

4. Altered Expression of Lysyl Oxidases in Malignant Pleural Mesothelioma

Targeting fibrosis has therapeutic benefits in mesothelioma. For instance, inhibition of collagen formation by the proline analogue thiaproline delays tumor growth in a mouse model of mesothelioma [146]. More recently, the endocytic collagen receptor, uPARAP, has been identified as being a potential diagnostic marker amenable to therapeutic intervention [147]. In MPM cells derived from epithelioid and biphasic histological subtypes, invasive capacity is enhanced in fibronectin-collagen matrices [148]. Moreover, high expression of the collagen alpha type 1 (COL1A1) gene is associated with a poorer prognosis [149], while type V collagen has been linked to poorer prognosis and an altered tissue microenvironment aiding invasion [150,151].

There is a strong rationale for lysyl oxidase inhibitors as a therapeutic approach in mesothelioma due to their ant-fibrotic mechanisms [152,153], synergism with chemotherapies [1], and modulation of EMT in mesothelioma [154,155].

Using Oncomine to conduct in silico analysis of existing mesothelioma microarray datasets [156,157], we confirmed that significant mRNA overexpression of lysyl oxidases occurs in both primary MPM tissues and cell lines (Figure 1), a finding since confirmed in a study of a Korean cohort of MPM patients [158].

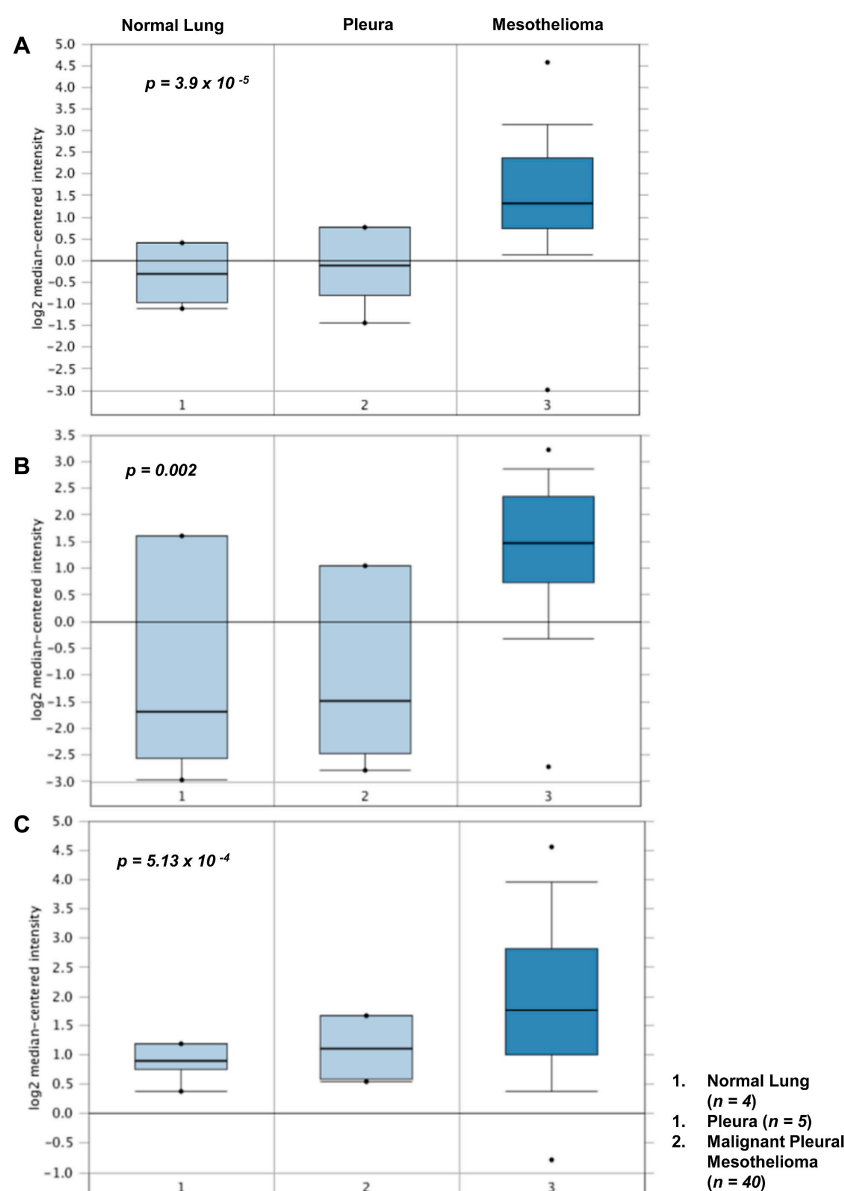


Figure 1. Altered expression of LOX, LOXL1 and LOXL2 in MPM. Using Oncomine [157], we found significantly altered mRNA expression of (A) LOX ($p = 3.9 \times 10^{-5}$); (B) LOXL1 ($p = 0.002$) and (C) LOXL2 ($p = 5.3 \times 10^{-4}$) in MPM tissues when compared to normal lung or pleura in the dataset of Gordon et al. [156].

MPM datasets accessed via The Cancer Genome Atlas (TCGA) were analyzed using Gepia2 [159] to review the relationship between survivability and lysyl oxidase expression. When stratified by median expression, the results revealed that higher lysyl oxidase expression correlated with a decreased overall survival (OS) when compared to low lysyl oxidase expression ($p = 3.6 \times 10^{-6}$) as shown in Figure 2.

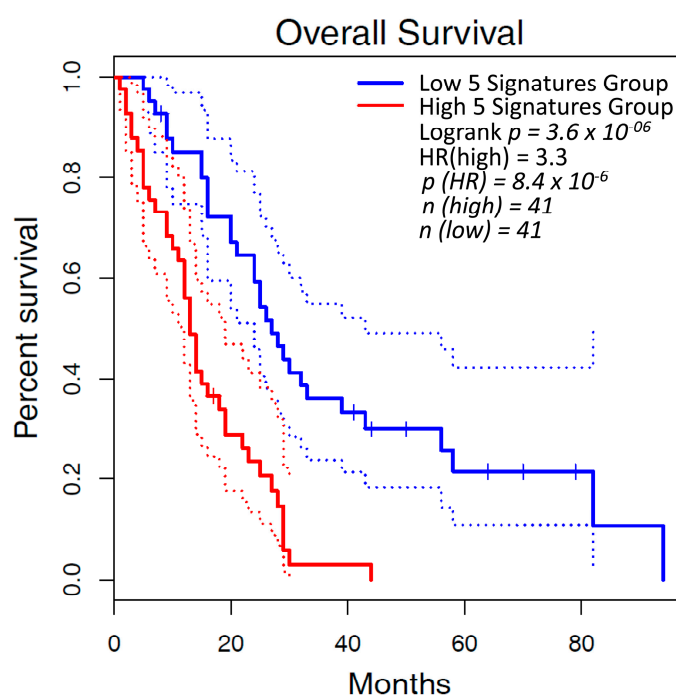


Figure 2. Poorer OS in mesothelioma is correlated with elevated LOX/LOXL mRNA levels. A combined gene expression of LOX, LOXL1, LOXL2, LOX3 & LOXL4 (5 signatures group) was analyzed for OS using the TCGA MESO dataset in Gepia2 [159], and stratified at the median between high expression and low expression. When stratified at the median, the high 5 signatures group had a significantly worse OS ($p = 3.6 \times 10^{-6}$).

Subsequently, we examined LOX activity in a cohort of $n = 120$ patient plasmas ($n = 40$ benign vs. $n = 80$ malignant) and demonstrated that LOX activity is significantly elevated ($p = 0.0002$) in the plasmas of patients with MPM (Figure 3).

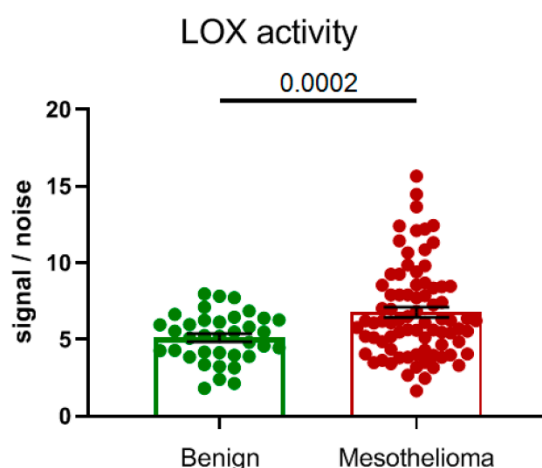


Figure 3. LOX activity is elevated in plasmas of patients with MPM. A cohort of $n = 40$ benign and $n = 80$ MPM plasma samples were examined for LOX activity using a LOX-specific bioprobe assay [160]. The results show a significantly elevated level of LOX activity in MPM patient plasmas ($p = 0.0002$).

Overall, the evidence suggests that LOX/LOXLs are upregulated within mesothelioma patients, play a role in the pathogenesis of MPM and are potential therapeutic targets.

5. Inhibitors of Lysyl Oxidases

Many inhibitors that target the lysyl oxidase family have now been described. In the following sections, we briefly review these and their current clinical development.

5.1. First Generation of Lysyl Oxidase Inhibitors

5.1.1. β -Aminopropionitrile (BAPN)

The first non-specific, competitive, irreversible pan-lysyl oxidase inhibitor was originally extracted from sweet peas (*Lathyrus odoratus*) in 1954 [161], with the active component being called beta-aminopropionitrile (BAPN). BAPN has a simple molecular structure containing a primary amine that mimics lysyl oxidases substrates (lysine residues), which interact with cofactor lysyl tyrosylquinone (LTQ) forming a covalent bond. In the 1960s, high doses of BAPN were trialed in Scleroderma patients (Table 3, with dosing of 1–3 g/day for 22–67 days), causing alteration in bone formations along with efficacious increases of hydroxyproline in the urine and of the dermal collagen alpha to beta ratio. A decade later, BAPN was further tested in the fibrous scar that forms in urethral stricture patients ($n = 5$), where a shorter time frame was utilized (1 g/day for 3 weeks) and no adverse effects were observed. The physical properties of the scar were affected, but insufficient data was collected to conclude a therapeutic effect [162]. BAPN is not considered to be a clinical candidate due to the potential of bone changes and off-target effects [160,163]. BAPN is also a substrate for the other amine oxidases (semi carbazide-sensitive amine oxidase (SSAO) and diamine oxidase (DAO)), which may contribute to the side effects observed in clinical trials [160].

5.1.2. Polyphenols Epigallocatechin Gallate (EGCG) and Ellagic Acid (EA)

Both ellagic acid (EA) and epigallocatechin gallate (EGCG) (Table 3) are dietary catechin polyphenols. Polyphenols are large molecules characterized by multiple phenyl groups that are highly oxidative and indiscriminate towards their lysine substrates. A variety of biological functions (superoxide radical scavenging activity, H_2O_2 scavenging, chelating capacity and lipid peroxidation) [164] have been attributed to polyphenols,

potentially due to their promiscuous nature. Numerous clinical trials (Phase 1 and 2, EGCG extensively reviewed in [165] and Table 3) have been completed with EGCG and EA for both cancer and fibrosis. High doses of polyphenols are required due to poor bioavailability (EA maximal human plasma concentration 100 nM [166], and EGCG peak concentration in human plasma 341 pmol/mL [167]). In preclinical models, high doses of EGCG (2 daily doses 750 mg/kg, i.g.) are hepatotoxic to mice. Of the multiple clinical trials run on polyphenols only, one demonstrated a reduction in biomarkers (collagen oligomeric matrix protein and periostin) and a reduction in protein expression in treated tissues (col1, snail and pSMAD, NCT03928847) [46]. The EGCG-dependent reduction in fibrotic markers is a promising result, but to date no therapeutic effects or clinical benefits have been demonstrated. Polyphenols' influence on multiple biological processes, poor bioavailability and potential off-target effects will need to be addressed before they can become a successful clinical candidate.

5.1.3. Copper Chelators (Tetrathiomolybdate and D-Penicillamine)

Copper is an essential microelement involved in a plethora of biological processes. Unbound copper ions are a potent oxidant and serve as a cofactor in redox reactions for enzymes, including lysyl oxidases. Copper absorption and its homeostasis in the body is highly regulated and complex, particularly as an excess is cytotoxic. The concentration of free copper in human plasma ranges from 66–143 µg/mL and in a variety of cancers has been shown to be elevated to between 129–328 µg/mL [168]. Copper staining of cancer tissue indicate that fibrosis is increased [169]. Copper concentration is particularly relevant to lysyl oxidases, as sequestering of copper is crucial for catalytic activity and the protein folding of the LTQ complex. A full review of copper chelators is not within the scope of this article; please see Baldari et al. [170].

The most commonly used copper chelators in clinical trials are tetra-thiomolybdate (TM) and D-penicillamine, (Table 3), which are known to be well-tolerated at low doses. The only clinical trial so far that demonstrated a reduction in fibrosis had 80% of patients withdraw from the trial due to adverse effects. Despite exceptionally high doses (D-penicillamin: 750–1000 mg/mL daily) utilized, most fibrotic tissues were unchanged, with the exception of a decrease in cardiomegaly. To advance copper chelators in clinical trials, the dose-dependent toxicity needs to be addressed.

Table 3. Inhibitors of the lysyl oxidase family and their current clinical development.

Inhibitor	Company	Molecule Type	Target	Clinical Details	Clinical Trial Identifier and Name	Disease	Summary Results	Reference
Beta-aminopropionitrile (BAPN)	National Heart Institute	Small molecule inhibitor	Pan-LOXs, SSAO and DAO	Phase 1–3 g/day for 22–67 days <i>n</i> = 4		Scleroderma	↑urine HYD ↑α:β collagen chains implying ↓crosslinks Bone formation changes	[171]
Beta-aminopropionitrile (BAPN)	University of Arizona	Small molecule inhibitor		250 mg 4 times daily for 3 weeks <i>n</i> = 5		Fibrous based urethral strictures	No adverse effects. Unclear therapeutic benefit. Demonstrated	[162]

							efficacy. ↑ in acid-soluble collagen. ↓ dermal scar strength.	
Simtuzumab (GS-6624)	Gilead	Humanised Antibody	LOXL2	Simtuzumab (200 or 700 mg) with Ruxolitinib 6 cycles of 28 days (~6 months) <i>n</i> = 54	Phase 2 NCT01369498	Thrombocytopenia, myelofibrosis	No clinical benefit in bone marrow fibrosis	[172]
Simtuzumab (GS-6624)	Gilead	Humanised Antibody	LOXL2	75 mg or 125 mg subcutaneous for 96 weeks <i>n</i> = 234	Phase 2 NCT01672853	Liver fibrosis in adults with primary biliary cholangitis	No significant clinical benefit to patients	[173]
Simtuzumab (GS-6624)	Gilead	Humanised Antibody	LOXL2	Subcutaneous 125 mg/mL single dose once a week. Up to 254 wks	Phase 2 NCT01769196, NCT01759511	Idiopathic pulmonary fibrosis	No ↑ progression free survival. Not recommended to progress in IPF	[174]
Simtuzumab (GS-6624)	Gilead	Humanised Antibody	LOXL2	Intravenous 700 mg every 2 wks for 22 wks (~6 months)	Phase 2 NCT01707472	Chronic Liver fibrosis in HIV and HCV – infected adults	Well tolerated and modulation of TGFβ3	[175]
Simtuzumab (GS-6624)	Gilead	Humanised Antibody	LOXL2	Combined with Gemcitabine (1000 mg/m ²) Simtuzumab either 200 or 700 mg (~3 months of treatment) <i>n</i> = 240	Phase 2 NCT01472198	Metastatic pancreatic adenocarcinoma	No ↑ OS (overall survival)	[176]
Simtuzumab (GS-6624)	Gilead	Humanised Antibody	LOXL2	Combination with FOLFIRI, Simtuzumab 200 or 700 mg <i>n</i> = 249 (second line) (~6 months of treatment)	Phase 2 NCT01479465	Metastatic KRAS mutant colorectal adenocarcinoma	Simtuzumab did not improve clinical outcomes	[177]
Simtuzumab (GS-6624)	Gilead	Humanised Antibody	LOXL2	Subcutaneous weekly injections of 75 or 125 mg of Simtuzumab over 240 wks <i>n</i> = 219	Phase 2 NCT01672866; NCT01672879;	Liver Fibrosis (nonalcoholic steatohepatitis, NASH)	Simtuzumab did not improve clinical outcomes	[178]
Simtuzumab (GS-6624)	Gilead	Humanised Antibody	LOXL2	200 mg, 700 mg or placebo by intravenous infusion every 2 weeks <i>n</i> = 258	Phase 2 (NCT01672879)	Nonalcoholic Steatohepatitis	Regression of fibrosis associated reduced liver-related	[179]

complications								
Epigallocatechin Gallate (EGCG)	Northumbria University	Polyphenols	Aldehydes	Oral 135 and 270 mg single dose	Phase 1 NCT00981292	Healthy subjects	No adverse effects	No Results Posted
Epigallocatechin Gallate (EGCG)	The University of Texas Health Science Center at San Antonio	Polyphenols	Aldehydes	Oral 450 mg twice a day for 1 year $n = 50$	Phase 1 NCT02891538	Primary colon or rectal adenocarcinoma	Study completion in 2023	No Results Posted
Epigallocatechin Gallate (EGCG)	National Cancer Institute (NIH)	Polyphenols	Aldehydes	Oral 800 or 1200 mg for 14–28 days prior to resection	Phase 2	Bladder cancer	PK: EGG levels increased. No significant changes in biomarkers	[180]
Epigallocatechin Gallate (EGCG)	University of California, San Francisco	Polyphenols	Aldehydes	Patients: 600 mg EGCG capsules once daily by mouth for two weeks	Phase1 NCT03928847	Idiopathic pulmonary fibrosis	Reduction in serum biomarkers collagen oligomeric matrix protein (COMP) and periostin and in tissue Col1, snail, pSMAD3, fibronectin; $n = 4$	[181]
Tetrathiomolybdate (TM)	University of Michigan	Copper chelator	Copper	$n = 23$	Phase1/2 NCT00189176	Idiopathic pulmonary fibrosis	Completed in 2006	No Results Posted
Tetrathiomolybdate (TM)	New York University School of Medicine & University of Michigan	Copper chelator	Copper	$n = 30$	Phase 2	Malignant Pleural Mesothelioma	Following cytoreduction surgery, antiangiogenic effects observed with minimal toxicity.	[182]
Tetrathiomolybdate (TM)	University of Michigan	Copper chelator	Copper	Oral 180 mg/day $n = 15$	Phase 2	Advanced kidney cancer	Well-tolerated and reduces copper in serum. Potential as an antiangiogenic	[183]

c therapy								
Tetrathiomolybdate (TM)	University of Michigan	Copper chelator	Copper	$n = 18$ 90, 105, 120 mg/day 90 days	Phase 1	Metastatic solid tumors including breast, colon, lung, and prostate cancers	Toxicity: mild anemia	[184]
Tetrathiomolybdate (TM)	Weill Cornell Medicine Iris Cantor Breast Center	Copper Chelator	Pan-LOXs	Oral 8–17 mg/dL for 2 years $n = 75$	Phase 2 NCT00195091	Breast Cancer stage II triple-negative breast cancer (TNBC), stage III and stage IV without any evidence of disease (NED)	No significant \uparrow OS	[185]
ATN-224	Cancer research UK	Copper chelator	Copper	Once daily	Phase 2 NCT00674557	Breast cancer	Terminated 2009 No results posted	No Results Posted
D-penicillamine	National institute of respiratory diseases in Mexico City	Copper Chelator	Non specific Pan-LOXs	Daily 600 mg $n = 56$ Combined with colchicine 1 mg daily and prednisone 15 mg/d 5 year study	Phase 2	Idiopathic pulmonary fibrosis	No improvement in disease progression	[186]
D-penicillamine	University of California	Copper Chelator	Non specific Pan-LOXs	Oral 750–1000 mg/day or 125 mg $n = 134$ 24 months study	Phase 2	Diffuse cutaneous systemic sclerosis	High dose had 80% adverse event related withdrawal A reduction in cardiomegaly	[187]
D-penicillamine	New approaches to brain tumour therapy CNS consortium (NCI)	Copper Chelator	Non specific Pan-LOXs	250 mg/day $n = 40$	Phase 2	Glioblastoma –post resection	Adverse effects: hypocupremia No change in survival	[188]
PXS-5505	Pharmaxis	Small molecule inhibitor	Pan-LOXs	Orally as 2×100 mg twice a day	Phase 1/2a NCT04676529	Myelofibrosis	NA	NA
PXS-5505	University of	Small molecule	Pan-LOXs	Orally 100–200 mg BID in combination	Phase 1b/2 NCT05109	Unresectable hepatocellular	NA	NA

	Rochester	inhibitor		with Atezolizumab (Anti-PD-L1) 1200 mg every 3 weeks and Bevacizumab (Anti-VEGF) 15 mg/kg every 3 weeks	052	r Carcinoma		
PXS-6302	Pharmaxis	Small molecule inhibitor	Pan-LOXs	Escalating dose 0.6–8 mg for 7 days topical	Phase 1/1c SOLARIA I ACTRN12621000322831	Healthy subjects Acute and established scar	NA	NA
PXS-5382	Pharmaxis	Small molecule inhibitor	LOXL2/3	Single dose	Phase 1 NCT04183517	Healthy subjects	No adverse effects	No Results Posted
PXS-5338	Pharmaxis	Small molecule inhibitor	LOXL2/3	Single dose	Phase 1 ACTRN12617001444370	Healthy subjects	No adverse effects	No Results Posted [160]
PAT-1251 (GB2064)	PharmAkea (Now with Galecto)	Small molecule inhibitor	LOXL2	Oral 150–4000 mg single dose	Phase 1 NCT02852551	NA	No adverse effects	NCT02852551
PAT-1251 (GB2064)	PharmAkea (Now with Galecto)	Small molecule inhibitor	LOXL2	Oral 150–4000 mg single dose orally as 4 × 250 mg tablets twice a day	Phase 2a MYLOX-1 NCT04679870 NCT04054245—with drawn MD Anderson	Myelofibrosi s.	NA	NCT04679870

5.2. 2nd Generation Inhibitors

Lysyl Oxidase Like 2 Antibodies (Simtuzumab)

Simtuzumab was the first humanized monoclonal antibody to target the enzymatic activity of LOXL2 to enter the clinic. Expectations were high for Simtuzumab, as it was developed as other anti-fibrotic treatments (nintedanib and pirfenidone) were being approved by the FDA for IPF. In addition, there was a prevalence of promising preclinical data (utilizing the mouse LOXL2 antibody AB0023) in both cancers and organ fibrosis [189]. However, in the clinic, despite Simtuzumab being well-tolerated, it did not show efficacy in both cancers and fibrotic diseases (Table 3). The lack of efficacy of Simtuzumab is thought to be dependent on a number of factors—which are irrespective of the potential of targeting the lysyl oxidase family in cancer and fibrotic diseases [160].

The inability to measure lysyl oxidase activity in vivo during Simtuzumab clinical trials limits our understanding of target engagement, pharmacokinetics (including determining optimal dosing, tissue distribution and process of elimination) and pharmacodynamics, which limits the ability to optimize the clinical trials. This lack of understanding is potentially the reason why the early trials (in primary sclerosing cholangitis, IPF and NASH) were dosed with only 125 mg, which, based on preclinical studies (Table 3), was insufficient for significant target inhibition. Later cancer trials dosed patients with 700 mg for 3–6 month periods; however, these trials recruited

patients irrespective of LOXL2 expression, activity or presence of fibrosis, which may have diluted efficacious responses to Simtuzumab.

Simtuzumab targets a single member of the lysyl oxidase family (LOXL2). To date, it is unclear if there is redundancy of the lysyl oxidases expression when a single member is targeted in humans. In a cancer setting, redundancy alone could explain the absence of efficacy within the clinical trials. Furthermore, it is questionable if large molecules like Simtuzumab are able to penetrate the complex impervious environment of fibrosis, which is pivotal for the success of human clinical trials in either cancer or fibrosis.

The failure of Simtuzumab was disappointing, but may be explained by the unavailability of target engagement assays leading to insufficient dosing, lack of understanding of protein turnover, lysyl oxidase family redundancy and the potential for poor tissue penetration. Despite this, Simtuzumab blazes the path for the future development of small-molecule approaches and target engagement-driven clinical trials for the lysyl oxidase inhibitors.

5.3. Lysyl Oxidase Small Molecule Inhibitors: The Way of the Future

The first generations of lysyl oxidase inhibitors have shaped the numerous clinical trials that are currently underway in cancer and fibrosis. For example, all current trials are wielding oral small-molecule enzymatic inhibitors, which should be optimal for tissue penetration (Table 3). Furthermore, target engagement assays have been developed utilizing Quanterix technology to measure low concentrations and activity of LOX and LOXL2 specifically, in both tissue and plasma [160]. The plasma LOX and LOXL2 activity has been shown to mirror recovery of activity in human tissue, providing a less invasive monitoring of target engagement. The establishment of target engagement assays has illustrated the dynamic nature of protein resynthesis, particularly for LOXL2 [160]. Despite reaching 90% target engagement, daily treatments are required to ensure complete inhibition due to the high resynthesis rates of lysyl oxidases [160]. Presently, in terms of treatment, it is still unclear the role redundancy will play within the lysyl oxidase family, but this will only be a consideration when not utilizing pan-lysyl oxidase inhibitors (e.g., PAT-1251 a LOXL2 inhibitor and PXS-5382 a dual LOXL2/LOXL3 inhibitor). Redundancy is more likely to occur in a cancer setting due to the plasticity and adaptive nature of tumors; therefore, a pan-lysyl oxidase inhibitor is generally a better approach. The new generation lysyl oxidase inhibitors have been shown to be non-toxic in human subjects in Phase 1 dose escalation trials (PXS-5505, PXS-6302, PXS-5382, PXS-5338 and PAT-1251, Table 3). Phase 1c/2 recruitment for clinical trials for Myelofibrosis has opened for both the pan-lysyl oxidase inhibitor (PXS-5505) and a LOXL2 specific inhibitor (PAT-1251) (Table 3). A combination clinical trial (PXS-5505 and Atezolizumab (anti-PD-L1) and Bevacizumab (anti-VEGF) in hepatocarcinoma will begin patient recruitment imminently. For skin fibrosis, a topical pan-lysyl oxidase inhibitor PXS-6302, will soon open to recruit patients with acute and established scars.

6. Discussion

Given the significant roles of lysyl oxidases in both cancerous and fibrotic disease settings, coupled with the current development of small molecule inhibitors, it is our opinion that a strong rationale has emerged for the progression to clinical trials in mesothelioma. In the previous sections, we have documented the significant roles played by lysyl oxidases in fibrosis not only in the non-cancerous, but also in the cancerous setting. We have presented evidence that lysyl oxidase expression and activity are significantly dysregulated in mesothelioma. Lysyl oxidase inhibitors have been predominantly tested as a single agent, where it is well-established that their primary mechanism of action is to prevent enzymatic cross-linking of collagen and elastins to counter fibrosis. The anti-fibrotic action of lysyl oxidase inhibitors has been demonstrated in a variety of preclinical cancer [125,190] and fibrosis models [189]. In

cancer, lysyl oxidase inhibitors alone are not cytotoxic, but are thought to be ideal for combining with chemotherapies and/or immune therapies.

Chemotherapies have been shown to increase the tissue stiffness and fibrosis in tumors [125,190]. Desmoplastic pancreatic cancers are well-circumscribed by fibrotic tissue, increasing interstitial pressure and limiting immune infiltration and the penetration of chemotherapies. Lysyl inhibitors have been shown to soften tumors and have a synergistic effect with chemotherapy (Gemcitabine) to increase survival and decrease metastasis [125]. Chemotherapies are beneficial in mesothelioma patients, although they may also exacerbate lung fibrosis, further limiting their respiration and lymphatic drainage. It is anticipated that lysyl oxidase inhibitors could alleviate mesothelioma patients' fibrotic response to chemotherapies, increase immune infiltration, extend survival and increase the quality of life.

The synergistic effects of chemotherapies and lysyl oxidase inhibitors have previously been thought to be solely due to the anti-fibrotic effects. However, more recently, lysyl oxidase inhibition has impacted immune cells. Chen et al. 2019 first suggested that lysyl oxidase inhibitors prevent the chemoattraction of tumor-associated macrophages (TAMs, pro-tumorigenic) in preclinical models of glioblastoma [191]. Furthermore, in pancreatic tumors treated with both a lysyl oxidase inhibitor and immune therapy, a decrease in pro-tumorigenic TAMs and an increase in CD8+ Granzyme B+ T-cells (anti-tumorigenic) was associated with increased survival [125].

Within the setting of metastasis, it may be possible to use lysyl oxidase inhibitors to prevent metastasis. Responses to paclitaxel-based therapy in breast cancer models induced LOX levels and activity in the lungs, resulting in pulmonary ECM remodeling and a pro-metastatic niche [192]. Mechanistically, CD8+ T cells secreted LOX, which could be targeted with lysyl oxidase inhibitors to suppress metastasis [192].

In preclinical models of human hepatocellular carcinoma, high LOXL4 expressing macrophages have an immunosuppressive function via an interferon (IFN)-mediated signal transducer and activator of the transcription (STATs)-dependent PD-L1 activation on CD8+ T cells [193]. Disappointingly, they fail to demonstrate that lysyl oxidase inhibitors affect survival and the immunosuppressive environment. Despite this, a phase 1c/2a trial combining a lysyl oxidase pan inhibitor with standard of care (Atezolizumab plus Bevacizumab) in unresectable hepatocellular carcinoma will be underway in 2022.

Checkpoint inhibitors have been approved by the FDA for the treatment of mesothelioma [11]. Coupled with lysyl oxidase inhibitors' anti-fibrotic activity and possible regulation of immune cell infiltration [125, 194], their combination has potential as a treatment option for mesothelioma. Moreover, anti-fibrotic strategies could be combined with standard first-line chemotherapies (cisplatin/pemetrexed) and conceivably be added to second-line salvage settings. However, significant preclinical studies will be required to test these promising combination therapies.

Additional remaining unanswered questions that may affect the inclusion of anti-fibrotic treatment strategies in mesothelioma include:

1. Is fibrosis limiting lymphatic drainage to cause pleural fluid buildup? Can lysyl oxidases inhibitors alleviate pleural fluid buildup?
2. Will lysyl oxidase inhibitors be synergistic with chemotherapies and immune therapies in patients?
3. How do lysyl oxidase inhibitors affect macrophages and their interaction with T-cells?
4. Will tumors adapt to lysyl oxidase inhibition?
5. Is there redundancy in the lysyl oxidase family members, particularly when treated with lysyl oxidase inhibitors?
6. Are LOX/LOXL inhibitors synergistic with immune therapies and/or chemotherapies in preclinical mesothelioma and patients?

In this review, we elaborated on the known functions of lysyl oxidases in the fibrotic setting. Overall, we believe that lysyl oxidases play important roles in the pathogenesis of mesothelioma. The current developments regarding lysyl oxidase inhibitors in the clinical setting are very encouraging and it will be exciting to see how these clinical trials unfold. Targeting lysyl oxidases has potential therapeutic implications in the management of mesothelioma.

7. Conclusions

One of the most significant issues facing patients with mesothelioma is a drastically reduced quality of life. A debilitating symptom of mesothelioma is dyspnea, and it is our belief that fibrosis plays a major role. Targeting lysyl oxidases to disrupt the fibrotic process may improve the mesothelioma patients' quality of life not only whilst undergoing therapy, but also in a palliative setting.

A second critical aspect of targeting lysyl oxidases is the potential for the anti-fibrotic effects to either potentiate or improve the response of patients to immune checkpoint inhibition or in combination with standard chemotherapy. Drugs that target lysyl oxidases could be combined into all existing therapeutic regimens for the treatment of mesothelioma to the potential benefit of patients.

Author Contributions: Conceptualization, L.P. and S.G.G.; data curation, S.G.G.; writing—original draft preparation, L.P. and S.G.G.; writing—review and editing, L.P. and S.G.G. All authors have read and agreed to the published version of the manuscript.

Funding: This research received no external funding.

Institutional Review Board Statement: The study was conducted according to the guidelines of the Declaration of Helsinki, and approved by the Institutional Review Board (or Ethics Committee) of St James's Hospital and Tallaght University Hospital Joint Research Ethics Committee (Ref. No. 041018/8804—2018-06 List 21(11)).

Informed Consent Statement: Informed consent was obtained from all subjects involved in the study, and a patient consent form is available upon request from Mesobank—<https://www.mesobank.com/governance/privacy-notice-for-research-participants/> (accessed on: 14 February 2022).

Data Availability Statement: The datasets analyzed during the current study are available in the following repositories: Oncomine: <https://www.oncomine.org/resource/login.html> (accessed on: 26/03/2019); and Gepia2: <http://gepia2.cancer-pku.cn/#index> (accessed on: 18 January 2022).

Acknowledgments: The authors would like to thank Wolfgang Jarolimek, Ross Hamilton and Jess Stolp for their support of manuscript review and comments.

Conflicts of Interest: Lara Perryman is an employee and shareholder of Pharmaxis Ltd. Compounds PXS-5505, PXS-6302, PXS5382 and PXS-5338 described within the manuscript are owned by Pharmaxis Ltd.

References

1. Carbone, M.; Adusumilli, P.S.; Alexander, H.R., Jr.; Baas, P.; Bardelli, F.; Bononi, A.; Bueno, R.; Felley-Bosco, E.; Galateau-Salle, F.; Jablons, D.; et al. Mesothelioma: Scientific clues for prevention, diagnosis, and therapy. *CA Cancer J. Clin.* **2019**, *69*, 402–429.
2. Carbone, M.; Baris, Y.I.; Bertino, P.; Brass, B.; Comertpay, S.; Dogan, A.U.; Gaudino, G.; Jube, S.; Kanodia, S.; Partridge, C.R.; et al. Erionite exposure in North Dakota and Turkish villages with mesothelioma. *Proc. Natl. Acad. Sci. USA* **2011**, *108*, 13618–13623.
3. Carbone, M.; Ly, B.H.; Dodson, R.F.; Pagano, I.; Morris, P.T.; Dogan, U.A.; Gazdar, A.F.; Pass, H.I.; Yang, H. Malignant mesothelioma: Facts, myths, and hypotheses. *J. Cell Physiol.* **2012**, *227*, 44–58.
4. Maher, B. Epidemiology: Fear in the dust. *Nature* **2010**, *468*, 884–885.
5. Arnold, D.T.; Maskell, N.A. Biomarkers in mesothelioma. *Ann. Clin. Biochem.* **2018**, *55*, 49–58.
6. Gunatilake, S.; Lodge, D.; Neville, D.; Jones, T.; Fogg, C.; Bassett, P.; Begum, S.; Kerley, S.; Marshall, L.; Glaysher, S.; et al. Predicting survival in malignant pleural mesothelioma using routine clinical and laboratory characteristics. *BMJ Open Respir. Res.* **2021**, *8*, e000506.
7. Shavelle, R.; Vavra-Musser, K.; Lee, J.; Brooks, J. Life Expectancy in Pleural and Peritoneal Mesothelioma. *Lung. Cancer Int.* **2017**, *2017*, 2782590.

8. Kindler, H.L.; Ismaila, N.; Armato, S.G., 3rd; Bueno, R.; Hesdorffer, M.; Jahan, T.; Jones, C.M.; Miettinen, M.; Pass, H.; Rimmer, A.; et al. Treatment of Malignant Pleural Mesothelioma: American Society of Clinical Oncology Clinical Practice Guideline. *J. Clin. Oncol.* **2018**, *36*, 1343–1373.
9. Vogelzang, N.J.; Rusthoven, J.J.; Symanowski, J.; Denham, C.; Kaukel, E.; Ruffie, P.; Gatzemeier, U.; Boyer, M.; Emri, S.; Manegold, C.; et al. Phase III study of pemetrexed in combination with cisplatin versus cisplatin alone in patients with malignant pleural mesothelioma. *J. Clin. Oncol.* **2003**, *21*, 2636–2644.
10. Zalcman, G.; Mazieres, J.; Margery, J.; Greillier, L.; Audigier-Valette, C.; Moro-Sibilot, D.; Molinier, O.; Corre, R.; Monnet, I.; Gounant, V.; et al. Bevacizumab for newly diagnosed pleural mesothelioma in the Mesothelioma Avastin Cisplatin Pemetrexed Study (MAPS): A randomised, controlled, open-label, phase 3 trial. *Lancet* **2016**, *387*, 1405–1414.
11. Nakajima, E.C.; Vellanki, P.J.; Larkins, E.; Chat.tterjee, S.; Mishra-Kalyani, P.S.; Bi, Y.; Qosa, H.; Liu, J.; Zhao, H.; Biabie, M.; et al. FDA Approval Summary: Nivolumab in Combination with Ipilimumab for the Treatment of Unresectable Malignant Pleural Mesothelioma. *Clin. Cancer Res.* **2021**, *28*, 446–451.
12. Baas, P.; Scherpereel, A.; Nowak, A.K.; Fujimoto, N.; Peters, S.; Tsao, A.S.; Mansfield, A.S.; Popat, S.; Jahan, T.; Antonia, S.; et al. First-line nivolumab plus ipilimumab in unresectable malignant pleural mesothelioma (CheckMate 743): A multicentre, randomised, open-label, phase 3 trial. *Lancet* **2021**, *397*, 375–386.
13. Fennell, D.A.; Ewings, S.; Ottensmeier, C.; Califano, R.; Hanna, G.G.; Hill, K.; Danson, S.; Steele, N.; Nye, M.; Johnson, L.; et al. Nivolumab versus placebo in patients with relapsed malignant mesothelioma (CONFIRM): A multicentre, double-blind, randomised, phase 3 trial. *Lancet Oncol.* **2021**, *22*, 1530–1540.
14. Miyamoto, Y.; Kozuki, T.; Aoe, K.; Wada, S.; Harada, D.; Yoshida, M.; Sakurai, J.; Hotta, K.; Fujimoto, N. JME-001 phase II trial of first-line combination chemotherapy with cisplatin, pemetrexed, and nivolumab for unresectable malignant pleural mesothelioma. *J. Immunother. Cancer* **2021**, *9*, e003288.
15. Forde, P.M.; Anagnostou, V.; Sun, Z.; Dahlberg, S.E.; Kindler, H.L.; Niknafs, N.; Purcell, T.; Santana-Davila, R.; Dudek, A.Z.; Borghaei, H.; et al. Durvalumab with platinum-pemetrexed for unresectable pleural mesothelioma: Survival, genomic and immunologic analyses from the phase 2 PrE0505 trial. *Nat. Med.* **2021**, *27*, 1910–1920.
16. Forde, P.M.; Scherpereel, A.; Tsao, A.S. Use of Immune Checkpoint Inhibitors in Mesothelioma. *Curr. Treat. Options Oncol.* **2019**, *20*, 18.
17. Nowak, A.K.; McDonnell, A.; Cook, A. Immune checkpoint inhibition for the treatment of mesothelioma. *Expert. Opin. Biol. Ther.* **2019**, *19*, 697–706.
18. Baird, A.M.; Easty, D.; Jarzabek, M.; Shiels, L.; Soltermann, A.; Klebe, S.; Raeppl, S.; MacDonagh, L.; Wu, C.; Griggs, K.; et al. When RON MET TAM in Mesothelioma: All Druggable for One, and One Drug for All? *Front. Endocrinol.* **2019**, *10*, 89.
19. Busacca, S.; Sheaff, M.; Arthur, K.; Gray, S.G.; O'Byrne, K.J.; Richard, D.J.; Soltermann, A.; Opitz, I.; Pass, H.; Harkin, D.P.; et al. BRCA1 is an essential mediator of vinorelbine-induced apoptosis in mesothelioma. *J. Pathol.* **2012**, *227*, 200–208.
20. Fennell, D.A.; King, A.; Mohammed, S.; Branson, A.; Brookes, C.; Darlison, L.; Dawson, A.G.; Gaba, A.; Hutka, M.; Morgan, B.; et al. Rucaparib in patients with BAP1-deficient or BRCA1-deficient mesothelioma (MiST1): An open-label, single-arm, phase 2a clinical trial. *Lancet Respir. Med.* **2021**, *9*, 593–600.
21. Szlosarek, P.W.; Steele, J.P.; Nolan, L.; Gilligan, D.; Taylor, P.; Spicer, J.; Lind, M.; Mitra, S.; Shamash, J.; Phillips, M.M.; et al. Arginine Deprivation With Pegylated Arginine Deiminase in Patients With Argininosuccinate Synthetase 1-Deficient Malignant Pleural Mesothelioma: A Randomized Clinical Trial. *JAMA Oncol.* **2017**, *3*, 58–66.
22. Szlosarek, P.W.; Phillips, M.M.; Pavlyk, I.; Steele, J.; Shamash, J.; Spicer, J.; Kumar, S.; Pacey, S.; Feng, X.; Johnston, A.; et al. Expansion Phase 1 Study of Pegargiminase Plus Pemetrexed and Cisplatin in Patients With Argininosuccinate Synthetase 1-Deficient Mesothelioma: Safety, Efficacy, and Resistance Mechanisms. *JTO Clin. Res. Rep.* **2020**, *1*, 100093.
23. Setargew, Y.F.I.; Wyllie, K.; Grant, R.D.; Chitty, J.L.; Cox, T.R. Targeting Lysyl Oxidase Family Meditated Matrix Cross-Linking as an Anti-Stromal Therapy in Solid Tumours. *Cancers* **2021**, *13*, 491.
24. Johnston, K.A.; Lopez, K.M. Lysyl oxidase in cancer inhibition and metastasis. *Cancer Lett.* **2018**, *417*, 174–181.
25. Amendola, P.G.; Reuten, R.; Erler, J.T. Interplay Between LOX Enzymes and Integrins in the Tumor Microenvironment. *Cancers* **2019**, *11*, 729.
26. Chen, L.; Li, S.; Li, W. LOX/LOXL in pulmonary fibrosis: Potential therapeutic targets. *J. Drug Target.* **2018**, *27*, 790–796.
27. Moon, H.J.; Finney, J.; Xu, L.; Moore, D.; Welch, D.R.; Mure, M. MCF-7 cells expressing nuclear associated lysyl oxidase-like 2 (LOXL2) exhibit an epithelial-to-mesenchymal transition (EMT) phenotype and are highly invasive in vitro. *J. Biol. Chem.* **2013**, *288*, 30000–30008.
28. Iturbide, A.; Garcia de Herreros, A.; Peiro, S. A new role for LOX and LOXL2 proteins in transcription regulation. *FEBS J.* **2015**, *282*, 1768–1773.
29. Cox, T.R.; Erler, J.T. Molecular pathways: Connecting fibrosis and solid tumor metastasis. *Clin. Cancer Res.* **2014**, *20*, 3637–3643.
30. Mitsushashi, A.; Goto, H.; Saijo, A.; Trung, V.T.; Aono, Y.; Ogino, H.; Kuramoto, T.; Tabata, S.; Uehara, H.; Izumi, K.; et al. Fibrocyte-like cells mediate acquired resistance to anti-angiogenic therapy with bevacizumab. *Nat. Commun.* **2015**, *6*, 8792.
31. Nguyen, E.V.; Pereira, B.A.; Lawrence, M.G.; Ma, X.; Rebello, R.J.; Chan, H.; Niranjana, B.; Wu, Y.; Ellem, S.; Guan, X.; et al. Proteomic Profiling of Human Prostate Cancer-associated Fibroblasts (CAF) Reveals LOXL2-dependent Regulation of the Tumor Microenvironment. *Mol. Cell Proteomics* **2019**, *18*, 1410–1427.

32. Torres, S.; Garcia-Palmero, I.; Herrera, M.; Bartolome, R.A.; Pena, C.; Fernandez-Acenero, M.J.; Padilla, G.; Pelaez-Garcia, A.; Lopez-Lucendo, M.; Rodriguez-Merlo, R.; et al. LOXL2 Is Highly Expressed in Cancer-Associated Fibroblasts and Associates to Poor Colon Cancer Survival. *Clin. Cancer Res.* **2015**, *21*, 4892–4902.
33. Zeltz, C.; Pasko, E.; Cox, T.R.; Navab, R.; Tsao, M.S. LOXL1 Is Regulated by Integrin $\alpha 11$ and Promotes Non-Small Cell Lung Cancer Tumorigenicity. *Cancers* **2019**, *11*, 705.
34. Levene, C.I.; Bye, I.; Saffiotti, U. The effect of beta-aminopropionitrile on silicotic pulmonary fibrosis in the rat. *Br. J. Exp. Pathol.* **1968**, *49*, 152–159.
35. Counts, D.F.; Evans, J.N.; Dipetrillo, T.A.; Sterling, K.M., Jr.; Kelley, J. Collagen lysyl oxidase activity in the lung increases during bleomycin-induced lung fibrosis. *J. Pharmacol. Exp. Ther.* **1981**, *219*, 675–678.
36. Ledwozyw, A. The effect of beta-aminopropionitrile on bleomycin-induced lung injury in rats. *Acta Physiol. Hung.* **1995**, *83*, 91–99.
37. Yao, Y.; Findlay, A.; Stolp, J.; Rayner, B.; Ask, K.; Jarolimek, W. Pan-lysyl oxidase inhibitor PXS-5505 ameliorates multiple-organ fibrosis by inhibiting collagen crosslinks in rodent models of systemic sclerosis. *Authorea Prepr.* **2021**. 1–27. DOI:10.22541/au.163847931.19877269/v1
38. Chien, J.W.; Richards, T.J.; Gibson, K.F.; Zhang, Y.; Lindell, K.O.; Shao, L.; Lyman, S.K.; Adamkewicz, J.I.; Smith, V.; Kaminski, N.; et al. Serum lysyl oxidase-like 2 levels and idiopathic pulmonary fibrosis disease progression. *Eur. Respir. J.* **2014**, *43*, 1430–1438.
39. Wang, J.; Zhu, Y.; Tan, J.; Meng, X.; Xie, H.; Wang, R. Lysyl oxidase promotes epithelial-to-mesenchymal transition during paraquat-induced pulmonary fibrosis. *Mol. BioSystems* **2016**, *12*, 499–507.
40. Lu, J.; Qian, Y.; Jin, W.; Tian, R.; Zhu, Y.; Wang, J.; Meng, X.; Wang, R. Hypoxia-inducible factor-1 α regulates epithelial-to-mesenchymal transition in paraquat-induced pulmonary fibrosis by activating lysyl oxidase. *Exp. Ther. Med.* **2018**, *15*, 2287–2294.
41. Aumiller, V.; Strobel, B.; Romeike, M.; Schuler, M.; Stierstorfer, B.E.; Kreuz, S. Comparative analysis of lysyl oxidase (like) family members in pulmonary fibrosis. *Sci. Rep.* **2017**, *7*, 149.
42. Fu, Q.; Bai, Y.; Liu, Y.; Zhou, J.; Zheng, Y. The serum level and significance of lysyl oxidase-like 2 in patients with rheumatoid arthritis-associated interstitial lung disease. *Clin. Rheumatol.* **2018**, *37*, 193–198.
43. Tjin, G.; White, E.S.; Faiz, A.; Sicard, D.; Tschumperlin, D.J.; Mahar, A.; Kable, E.P.W.; Burgess, J.K. Lysyl oxidases regulate fibrillar collagen remodelling in idiopathic pulmonary fibrosis. *Dis Model. Mech.* **2017**, *10*, 1301–1312.
44. Bellaye, P.S.; Shimbori, C.; Upagupta, C.; Sato, S.; Shi, W.; Gauldie, J.; Ask, K.; Kolb, M. Lysyl Oxidase-Like 1 Protein Deficiency Protects Mice from Adenoviral Transforming Growth Factor- $\beta 1$ -induced Pulmonary Fibrosis. *Am. J. Respir. Cell Mol. Biol.* **2018**, *58*, 461–470.
45. Matsuo, A.; Tanida, R.; Yanagi, S.; Tsubouchi, H.; Miura, A.; Shigekusa, T.; Matsumoto, N.; Nakazato, M. Significance of nuclear LOXL2 inhibition in fibroblasts and myofibroblasts in the fibrotic process of acute respiratory distress syndrome. *Eur. J. Pharmacol.* **2021**, *892*, 173754.
46. Wei, Y.; Dong, W.; Jackson, J.; Ho, T.C.; Le Saux, C.J.; Brumwell, A.; Li, X.; Klesney-Tait, J.; Cohen, M.L.; Wolters, P.J.; et al. Blocking LOXL2 and TGF $\beta 1$ signalling induces collagen I turnover in precision-cut lung slices derived from patients with idiopathic pulmonary fibrosis. *Thorax* **2021**, *76*, 729–732.
47. Velázquez-Enríquez, J.M.; Santos-Álvarez, J.C.; Ramírez-Hernández, A.A.; Reyes-Jiménez, E.; López-Martínez, A.; Pina-Canseco, S.; Aguilar-Ruiz, S.R.; Romero-Tlalolini, M.; Castro-Sánchez, L.; Arellanes-Robledo, J.; et al. Proteomic Analysis Reveals Key Proteins in Extracellular Vesicles Cargo Associated with Idiopathic Pulmonary Fibrosis In Vitro. *Biomedicines* **2021**, *9*, 1058.
48. Choi, S.E.; Jeon, N.; Choi, H.Y.; Shin, J.I.; Jeong, H.J.; Lim, B.J. Lysyl oxidase-like 2 is expressed in kidney tissue and is associated with the progression of tubulointerstitial fibrosis. *Mol. Med. Rep.* **2017**, *16*, 2477–2482.
49. Cosgrove, D.; Dufek, B.; Meehan, D.T.; Delimont, D.; Hartnett, M.; Samuelson, G.; Gratton, M.A.; Phillips, G.; MacKenna, D.A.; Bain, G. Lysyl oxidase like-2 contributes to renal fibrosis in Col4 $\alpha 3$ /Alport mice. *Kidney Int.* **2018**, *94*, 303–314.
50. Zhang, X.Q.; Li, X.; Zhou, W.Q.; Liu, X.; Huang, J.L.; Zhang, Y.Y.; Lindholm, B.; Yu, C. Serum Lysyl Oxidase Is a Potential Diagnostic Biomarker for Kidney Fibrosis. *Am. J. Nephrol.* **2020**, *51*, 907–918.
51. Nguyen, L.T.; Saad, S.; Shi, Y.; Wang, R.; Chou, A.S.Y.; Gill, A.; Yao, Y.; Jarolimek, W.; Pollock, C.A. Lysyl oxidase inhibitors attenuate cyclosporin A-induced nephropathy in mouse. *Sci. Rep.* **2021**, *11*, 12437.
52. Siegel, R.C.; Chen, K.H.; Greenspan, J.S.; Aguiar, J.M. Biochemical and immunochemical study of lysyl oxidase in experimental hepatic fibrosis in the rat. *Proc. Natl. Acad. Sci. USA* **1978**, *75*, 2945–2949.
53. McPhie, J.L. The activity of lysyl oxidase in experimental hepatic fibrosis. *Hepatogastroenterology* **1981**, *28*, 240–241.
54. Carter, E.A.; McCarron, M.J.; Alpert, E.; Isselbacher, K.J. Lysyl oxidase and collagenase in experimental acute and chronic liver injury. *Gastroenterology* **1982**, *82*, 526–534.
55. Wakasaki, H.; Ooshima, A. Synthesis of lysyl oxidase in experimental hepatic fibrosis. *Biochem. Biophys Res. Commun.* **1990**, *166*, 1201–1204.
56. Guo, C.J.; Xiao, X.; Sheng, L.; Chen, L.; Zhong, W.; Li, H.; Hua, J.; Ma, X. RNA Sequencing and Bioinformatics Analysis Implicate the Regulatory Role of a Long Noncoding RNA-mRNA Network in Hepatic Stellate Cell Activation. *Cell Physiol. Biochem.* **2017**, *42*, 2030–2042.
57. Mannaerts, I.; Schroyen, B.; Verhulst, S.; Van Lommel, L.; Schuit, F.; Nyssen, M.; van Grunsven, L.A. Gene expression profiling of early hepatic stellate cell activation reveals a role for Igfbp3 in cell migration. *PLoS ONE* **2013**, *8*, e84071.

58. Perepelyuk, M.; Terajima, M.; Wang, A.Y.; Georges, P.C.; Janmey, P.A.; Yamauchi, M.; Wells, R.G. Hepatic stellate cells and portal fibroblasts are the major cellular sources of collagens and lysyl oxidases in normal liver and early after injury. *Am. J. Physiol. Gastrointest Liver Physiol.* **2013**, *304*, G605–G614.
59. Liu, S.B.; Ikenaga, N.; Peng, Z.W.; Sverdlov, D.Y.; Greenstein, A.; Smith, V.; Schuppan, D.; Popov, Y. Lysyl oxidase activity contributes to collagen stabilization during liver fibrosis progression and limits spontaneous fibrosis reversal in mice. *FASEB J.* **2016**, *30*, 1599–1609.
60. Murawaki, Y.; Kusakabe, Y.; Hirayama, C. Serum lysyl oxidase activity in chronic liver disease in comparison with serum levels of prolyl hydroxylase and laminin. *Hepatology* **1991**, *14*, 1167–1173.
61. Kim, Y.; Peyrol, S.; So, C.K.; Boyd, C.D.; Csiszar, K. Coexpression of the lysyl oxidase-like gene (LOXL) and the gene encoding type III procollagen in induced liver fibrosis. *J. Cell Biochem.* **1999**, *72*, 181–188.
62. Vadasz, Z.; Kessler, O.; Akiri, G.; Gengrinovitch, S.; Kagan, H.M.; Baruch, Y.; Izhak, O.B.; Neufeld, G. Abnormal deposition of collagen around hepatocytes in Wilson's disease is associated with hepatocyte specific expression of lysyl oxidase and lysyl oxidase like protein-2. *J. Hepatol.* **2005**, *43*, 499–507.
63. Zhang, Y.; Ghazwani, M.; Li, J.; Sun, M.; Stolz, D.B.; He, F.; Fan, J.; Xie, W.; Li, S. MiR-29b inhibits collagen maturation in hepatic stellate cells through down-regulating the expression of HSP47 and lysyl oxidase. *Biochem. Biophys. Res. Commun.* **2014**, *446*, 940–944.
64. Mesarwi, O.A.; Shin, M.K.; Drager, L.F.; Bevans-Fonti, S.; Jun, J.C.; Putcha, N.; Torbenson, M.S.; Pedrosa, R.P.; Lorenzi-Filho, G.; Steele, K.E.; et al. Lysyl Oxidase as a Serum Biomarker of Liver Fibrosis in Patients with Severe Obesity and Obstructive Sleep Apnea. *Sleep* **2015**, *38*, 1583–1591.
65. Ikenaga, N.; Peng, Z.W.; Vaid, K.A.; Liu, S.B.; Yoshida, S.; Sverdlov, D.Y.; Mikels-Vigdal, A.; Smith, V.; Schuppan, D.; Popov, Y.V. Selective targeting of lysyl oxidase-like 2 (LOXL2) suppresses hepatic fibrosis progression and accelerates its reversal. *Gut* **2017**, *66*, 1697–1708.
66. Dongiovanni, P.; Meroni, M.; Baselli, G.A.; Bassani, G.A.; Rametta, R.; Pietrelli, A.; Maggioni, M.; Facciotti, F.; Trunzo, V.; Badiali, S.; et al. Insulin resistance promotes Lysyl O...Oxidase Like 2 induction and fibrosis accumulation in non-alcoholic fatty liver disease. *Clin. Sci.* **2017**, *131*, 1301–1315.
67. Zhao, W.; Yang, A.; Chen, W.; Wang, P.; Liu, T.; Cong, M.; Xu, A.; Yan, X.; Jia, J.; You, H. Inhibition of lysyl oxidase-like 1 (LOXL1) expression arrests liver fibrosis progression in cirrhosis by reducing elastin crosslinking. *Biochim. Biophys. Acta Mol. Basis Dis.* **2018**, *1864*, 1129–1137.
68. Ma, L.; Zeng, Y.; Wei, J.; Yang, D.; Ding, G.; Liu, J.; Shang, J.; Kang, Y.; Ji, X. Knockdown of LOXL1 inhibits TGF- β 1-induced proliferation and fibrogenesis of hepatic stellate cells by inhibition of Smad2/3 phosphorylation. *Biomed. Pharmacother.* **2018**, *107*, 1728–1735.
69. Schilter, H.; Findlay, A.D.; Perryman, L.; Yow, T.T.; Moses, J.; Zahoor, A.; Turner, C.I.; Deodhar, M.; Foot, J.S.; Zhou, W.; et al. The lysyl oxidase like 2/3 enzymatic inhibitor, PXS-5153A, reduces crosslinks and ameliorates fibrosis. *J. Cell Mol. Med.* **2019**, *23*, 1759–1770.
70. Puente, A.; Fortea, J.I.; Posadas, M.; Garcia Blanco, A.; Rasines, L.; Cabezas, J.; Arias Loste, M.T.; Llerena, S.; Iruzubieta, P.; Fábrega, E.; et al. Changes in Circulating Lysyl Oxidase-Like-2 (LOXL2) Levels, HOMA, and Fibrosis after Sustained Virological Response by Direct Antiviral Therapy. *J. Clin. Med.* **2019**, *8*, 1242.
71. Klepfish, M.; Gross, T.; Vugman, M.; Afratis, N.A.; Havusha-Laufer, S.; Brazowski, E.; Solomonov, I.; Varol, C.; Sagi, I. LOXL2 Inhibition Paves the Way for Macrophage-Mediated Collagen Degradation in Liver Fibrosis. *Front. Immunol.* **2020**, *11*, 480.
72. Guo, C.J.; Pan, Q.; Li, D.G.; Sun, H.; Liu, B.W. miR-15b and miR-16 are implicated in activation of the rat hepatic stellate cell: An essential role for apoptosis. *J. Hepatol.* **2009**, *50*, 766–778.
73. Ma, L.; Liu, J.; Xiao, E.; Ning, H.; Li, K.; Shang, J.; Kang, Y. MiR-15b and miR-16 suppress TGF- β 1-induced proliferation and fibrogenesis by regulating LOXL1 in hepatic stellate cells. *Life Sci.* **2021**, *270*, 119144.
74. Yang, A.; Yan, X.; Fan, X.; Shi, Y.; Huang, T.; Li, W.; Chen, W.; Jia, J.; You, H. Hepatic stellate cells-specific LOXL1 deficiency abrogates hepatic inflammation, fibrosis, and corrects lipid metabolic abnormalities in non-obese NASH mice. *Hepatol. Int.* **2021**, *15*, 1122–1135.
75. Malaspina, A.; Kaushik, N.; de Belleruche, J. Differential expression of 14 genes in amyotrophic lateral sclerosis spinal cord detected using gridded cDNA arrays. *J. Neurochem.* **2001**, *77*, 132–145.
76. Li, P.A.; He, Q.; Cao, T.; Yong, G.; Szauter, K.M.; Fong, K.S.; Karlsson, J.; Keep, M.F.; Csiszar, K. Up-regulation and altered distribution of lysyl oxidase in the central nervous system of mutant SOD1 transgenic mouse model of amyotrophic lateral sclerosis. *Brain Res. Mol. Brain Res.* **2004**, *120*, 115–122.
77. Meyringer, R.; Neumann, E.; Judex, M.; Landthaler, M.; Kullmann, F.; Scholmerich, J.; Gay, S.; Tarner, I.H.; Distler, O.; Müller-Ladner, U. Analysis of gene expression patterns in systemic sclerosis fibroblasts using RNA arbitrarily primed-polymerase chain reaction for differential display. *J. Rheumatol.* **2007**, *34*, 747–753.
78. Nguyen, X.X.; Nishimoto, T.; Takihara, T.; Mlakar, L.; Bradshaw, A.D.; Feghali-Bostwick, C. Lysyl oxidase directly contributes to extracellular matrix production and fibrosis in systemic sclerosis. *Am. J. Physiol. Lung Cell Mol. Physiol.* **2021**, *320*, L29–L40.
79. Rimar, D.; Rosner, I.; Nov, Y.; Slobodin, G.; Rozenbaum, M.; Halasz, K.; Haj, T.; Jiries, N.; Kaly, L.; Boulman, N.; et al. Brief report: Lysyl oxidase is a potential biomarker of fibr.rosis in systemic sclerosis. *Arthritis Rheumatol.* **2014**, *66*, 726–730.

80. Vadasz, Z.; Balbir Gurman, A.; Meroni, P.; Farge, D.; Levi, Y.; Ingegnoli, F.; Braun-Moscovici, Y.; Rosner, I.; Slobodin, G.; Rozenbaum, M.; et al. Lysyl oxidase—a possible role in systemic sclerosis-associated pulmonary hypertension: A multicentre study. *Rheumatology* **2019**, *58*, 1547–1555.
81. Huang, M.; Cai, G.; Baugh, L.M.; Liu, Z.; Smith, A.; Watson, M.; Popovich, D.; Zhang, T.; Stawski, L.S.; Trojanowska, M.; et al. Systemic Sclerosis Dermal Fibroblasts Induce Cutaneous Fibrosis Through Lysyl Oxidase-like 4: New Evidence From Three-Dimensional Skin-like Tissues. *Arthritis Rheumatol.* **2020**, *72*, 791–801.
82. Richeldi, L.; Collard, H.R.; Jones, M.G. Idiopathic pulmonary fibrosis. *Lancet* **2017**, *389*, 1941–1952.
83. van Geffen, C.; Deißler, A.; Quante, M.; Renz, H.; Hartl, D.; Kolahian, S. Regulatory Immune Cells in Idiopathic Pulmonary Fibrosis: Friends or Foes? *Front. Immunol.* **2021**, *12*, 663203.
84. Planté-Bordeneuve, T.; Pilette, C.; Froidure, A. The Epithelial-Immune Crosstalk in Pulmonary Fibrosis. *Front. Immunol.* **2021**, *12*, 631235.
85. Kishore, A.; Petrek, M. Roles of Macrophage Polarization and Macrophage-Derived miRNAs in Pulmonary Fibrosis. *Front. Immunol.* **2021**, *12*, 678457.
86. Chen, L.J.; Li, W.D.; Li, S.F.; Su, X.W.; Lin, G.Y.; Huang, Y.J.; Yan, G.M. Bleomycin induces upregulation of lysyl oxidase in cultured human fetal lung fibroblasts. *Acta Pharmacol. Sin.* **2010**, *31*, 554–559.
87. Yang, J.; Savvatis, K.; Kang, J.S.; Fan, P.; Zhong, H.; Schwartz, K.; Barry, V.; Mikels-Vigdal, A.; Karpinski, S.; Korniyev, D.; et al. Targeting LOXL2 for cardiac interstitial fibrosis and heart failure treatment. *Nat. Commun.* **2016**, *7*, 13710.
88. Rodríguez, C.; Martínez-González, J. The Role of Lysyl Oxidase Enzymes in Cardiac Function and Remodeling. *Cells* **2019**, *8*, 1483.
89. Nagaraju, C.K.; Robinson, E.L.; Abdesslem, M.; Trenson, S.; Dries, E.; Gilbert, G.; Janssens, S.; Van Cleemput, J.; Rega, F.; Meyns, B.; et al. Myofibroblast Phenotype and Reversibility of Fibrosis in Patients With End-Stage Heart Failure. *J. Am. Coll. Cardiol.* **2019**, *73*, 2267–2282.
90. Wu, Y.; Can, J.; Hao, S.; Qiang, X.; Ning, Z. LOXL2 Inhibitor Attenuates Angiotensin II-Induced Atrial Fibrosis and Vulnerability to Atrial Fibrillation through Inhibition of Transforming Growth Factor Beta-1 Smad2/3 Pathway. *Cerebrovasc. Dis.* **2021**, 1–11. <https://doi.org/10.1159/000518526>
91. Subramanian, M.L.; Stein, T.D.; Siegel, N.; Ness, S.; Fiorello, M.G.; Kim, D.; Roy, S. Upregulation of Lysyl Oxidase Expression in Vitreous of Diabetic Subjects: Implications for Diabetic Retinopathy. *Cells* **2019**, *8*, 1122.
92. Kim, D.; Mecham, R.P.; Nguyen, N.H.; Roy, S. Decreased lysyl oxidase level protects against development of retinal vascular lesions in diabetic retinopathy. *Exp. Eye Res.* **2019**, *184*, 221–226.
93. Kim, D.; Lee, D.; Trackman, P.C.; Roy, S. Effects of High Glucose-Induced Lysyl Oxidase Propeptide on Retinal Endothelial Cell Survival: Implications for Diabetic Retinopathy. *Am. J. Pathol.* **2019**, *189*, 1945–1952.
94. Song, B.; Kim, D.; Nguyen, N.H.; Roy, S. Inhibition of Diabetes-Induced Lysyl Oxidase Overexpression Prevents Retinal Vascular Lesions Associated With Diabetic Retinopathy. *Invest. Ophthalmol. Vis. Sci.* **2018**, *59*, 5965–5972.
95. Xiao, W.; He, J.; Fu, W.; Xu, Y.; Zhang, Z. LOX gene polymorphisms are associated with osteoporotic vertebral compression fracture in postmenopausal Chinese women. *Gene* **2020**, *741*, 144543.
96. Ida, T.; Kaku, M.; Kitami, M.; Terajima, M.; Rosales Rocabado, J.M.; Akiba, Y.; Nagasawa, M.; Yamauchi, M.; Uoshima, K. Extracellular matrix with defective collagen cross-linking affects the differentiation of bone cells. *PLoS ONE* **2018**, *13*, e0204306.
97. Cox, T.R. The matrix in cancer. *Nat. Rev. Cancer* **2021**, *21*, 217–238.
98. Piersma, B.; Hayward, M.K.; Weaver, V.M. Fibrosis and cancer: A strained relationship. *Biochim. Biophys. Acta Rev. Cancer* **2020**, *1873*, 188356.
99. Saatci, O.; Kaymak, A.; Raza, U.; Ersan, P.G.; Akbulut, O.; Banister, C.E.; Sikirzhyski, V.; Tokat, U.M.; Aykut, G.; Ansari, S.A.; et al. Targeting lysyl oxidase (LOX) overcomes chemotherapy resistance in triple negative breast cancer. *Nat. Commun.* **2020**, *11*, 2416.
100. Maller, O.; Drain, A.P.; Barrett, A.S.; Borgquist, S.; Ruffell, B.; Zakharevich, I.; Pham, T.T.; Gruosso, T.; Kuasne, H.; Lakins, J.N.; et al. Tumour-associated macrophages drive stromal cell-dependent collagen crosslinking and stiffening to promote breast cancer aggression. *Nat. Mater.* **2021**, *20*, 548–559.
101. Dinca, S.C.; Greiner, D.; Weidenfeld, K.; Bond, L.; Barkan, D.; Jorczyk, C.L. Novel mechanism for OSM-promoted extracellular matrix remodeling in breast cancer: LOXL2 upregulation and subsequent ECM alignment. *Breast Cancer Res.* **2021**, *23*, 56.
102. Yin, H.; Wang, Y.; Wu, Y.; Zhang, X.; Liu, J.; Wang, T.; Fan, J.; Sun, J.; Yang, A.; Zhang, R. EZH2-mediated Epigenetic Silencing of miR-29/miR-30 targets LOXL4 and contributes to Tumorigenesis, Metastasis, and Immune Microenvironment Remodeling in Breast Cancer. *Theranostics* **2020**, *10*, 8494–8512.
103. Choi, S.K.; Kim, H.S.; Jin, T.; Moon, W.K. LOXL4 knockdown enhances tumor growth and lung metastasis through collagen-dependent extracellular matrix changes in triple-negative breast cancer. *Oncotarget* **2017**, *8*, 11977–11989.
104. Wang, C.; Xu, S.; Tian, Y.; Ju, A.; Hou, Q.; Liu, J.; Fu, Y.; Luo, Y. Lysyl Oxidase-Like Protein 2 Promotes Tumor Lymphangiogenesis and Lymph Node Metastasis in Breast Cancer. *Neoplasia* **2019**, *21*, 413–427.
105. Leo, C.; Cotic, C.; Pomp, V.; Fink, D.; Varga, Z. Overexpression of Lox in triple-negative breast cancer. *Ann Diagn Pathol.* **2018**, *34*, 98–102.
106. Salvador, F.; Martin, A.; López-Menéndez, C.; Moreno-Bueno, G.; Santos, V.; Vázquez-Naharro, A.; Santamaria, P.G.; Morales, S.; Dubus, P.R.; Muinelo-Romay, L.; et al. Lysyl Oxidase-like Protein LOXL2 Promotes Lung Metastasis of Breast Cancer. *Cancer Res.* **2017**, *77*, 5846–5859.

107. Janyasupab, M.; Lee, Y.H.; Zhang, Y.; Liu, C.W.; Cai, J.; Popa, A.; Samia, A.C.; Wang, K.W.; Xu, J.; Hu, C.C.; et al. Detection of Lysyl Oxidase-Like 2 (LOXL2), a Biomarker of Metastasis from Breast Cancers Using Human Blood Samples. *Recent Pat. Biomark.* **2015**, *5*, 93–100.
108. Peyrol, S.; Raccurt, M.; Gerard, F.; Gleyzal, C.; Grimaud, J.A.; Sommer, P. Lysyl oxidase gene expression in the stromal reaction to in situ and invasive ductal breast carcinoma. *Am. J. Pathol.* **1997**, *150*, 497–507.
109. Decitre, M.; Gleyzal, C.; Raccurt, M.; Peyrol, S.; Aubert-Foucher, E.; Csiszar, K.; Sommer, P. Lysyl oxidase-like protein localizes to sites of de novo fibrinogenesis in fibrosis and in the early stromal reaction of ductal breast carcinomas. *Lab. Invest.* **1998**, *78*, 143–151.
110. Lin, S.; Zheng, L.; Lu, Y.; Xia, Q.; Zhou, P.; Liu, Z. Comprehensive analysis on the expression levels and prognostic values of LOX family genes in kidney renal clear cell carcinoma. *Cancer Med.* **2020**, *9*, 8624–8638.
111. Hong, X.; Yu, J.J. Silencing of lysyl oxidase-like 2 inhibits the migration, invasion and epithelial-to-mesenchymal transition of renal cell carcinoma cells through the Src/FAK signaling pathway. *Int. J. Oncol.* **2019**, *54*, 1676–1690.
112. Di Stefano, V.; Torsello, B.; Bianchi, C.; Cifola, I.; Mangano, E.; Bovo, G.; Cassina, V.; De Marco, S.; Corti, R.; Meregalli, C.; et al. Major Action of Endogenous Lysyl Oxidase in Clear Cell Renal Cell Carcinoma Progression and Collagen Stiffness Revealed by Primary Cell Cultures. *Am. J. Pathol.* **2016**, *186*, 2473–2485.
113. Stassar, M.J.; Devitt, G.; Brosius, M.; Rinnab, L.; Prang, J.; Schradin, T.; Simon, J.; Petersen, S.; Kopp-Schneider, A.; Zöller, M. Identification of human renal cell carcinoma associated genes by suppression subtractive hybridization. *Br. J. Cancer* **2001**, *85*, 1372–1382.
114. Mongkolroob, R.; Tharabenjasin, P.; Bualuang, A.; Jarjanazi, H.; Pabalan, N. Influence of Lysyl oxidase Polymorphisms in Cancer Risk: An Updated Meta-analysis. *Genet. Test. Mol. Biomarkers* **2021**, *25*, 411–418.
115. Wang, G.; Shen, Y.; Cheng, G.; Bo, H.; Lin, J.; Zheng, M.; Li, J.; Zhao, Y.; Li, W. Lysyl Oxidase Gene G473A Polymorphism and Cigarette Smoking in Association with a High Risk of Lung and Colorectal Cancers in a North Chinese Population. *Int. J. Environ. Res. Public Health* **2016**, *13*, 635.
116. Shi, W.; Yang, B.; Li, X.; Sun, S.; Wang, L.; Jiao, S. The effect of lysyl oxidase polymorphism on susceptibility and prognosis of nonsmall cell lung cancer. *Tumour. Biol.* **2012**, *33*, 2379–2383.
117. Hou, X.; Du, H.; Quan, X.; Shi, L.; Zhang, Q.; Wu, Y.; Liu, Y.; Xiao, J.; Li, Y.; Lu, L.; et al. Silibinin Inhibits NSCLC Metastasis by Targeting the EGFR/LOX Pathway. *Front. Pharmacol.* **2018**, *9*, 21.
118. Zhan, P.; Lv, X.J.; Ji, Y.N.; Xie, H.; Yu, L.K. Increased lysyl oxidase-like 2 associates with a poor prognosis in non-small cell lung cancer. *Clin. Respir. J.* **2018**, *12*, 712–720.
119. Liu, J.; Ping, W.; Zu, Y.; Sun, W. Correlations of lysyl oxidase with MMP2/MMP9 expression and its prognostic value in non-small cell lung cancer. *Int. J. Clin. Exp. Pathol.* **2014**, *7*, 6040–6047.
120. Wilgus, M.L.; Borczuk, A.C.; Stoopler, M.; Ginsburg, M.; Gorenstein, L.; Sonett, J.R.; Powell, C.A. Lysyl oxidase: A lung adenocarcinoma biomarker of invasion and survival. *Cancer* **2011**, *117*, 2186–2191.
121. Zhan, P.; Shen, X.K.; Qian, Q.; Zhu, J.P.; Zhang, Y.; Xie, H.Y.; Xu, C.H.; Hao, K.K.; Hu, W.; Xia, N.; et al. Down-regulation of lysyl oxidase-like 2 (LOXL2) is associated with disease progression in lung adenocarcinomas. *Med. Oncol.* **2012**, *29*, 648–655.
122. Peng, D.H.; Ungewiss, C.; Tong, P.; Byers, L.A.; Wang, J.; Canales, J.R.; Villalobos, P.A.; Uraoka, N.; Mino, B.; Behrens, C.; et al. ZEB1 induces LOXL2-mediated collagen stabilization and deposition in the extracellular matrix to drive lung cancer invasion and metastasis. *Oncogene* **2017**, *36*, 1925–1938.
123. Wei, L.; Song, X.R.; Sun, J.J.; Wang, X.W.; Xie, L.; Lv, L.Y. Lysyl oxidase may play a critical role in hypoxia-induced NSCLC cells invasion and migration. *Cancer Biother Radiopharm.* **2012**, *27*, 672–677.
124. Kamikawaji, K.; Seki, N.; Watanabe, M.; Mataka, H.; Kumamoto, T.; Takagi, K.; Mizuno, K.; Inoue, H. Regulation of LOXL2 and SERPINH1 by antitumor microRNA-29a in lung cancer with idiopathic pulmonary fibrosis. *J. Hum. Genet.* **2016**, *61*, 985–993.
125. Nicolas-Boluda, A.; Vaquero, J.; Vimeux, L.; Guilbert, T.; Barrin, S.; Kantari-Mimoun, C.; Ponzo, M.; Renault, G.; Deptula, P.; Pogoda, K.; et al. Tumor stiffening reversion through collagen crosslinking inhibition improves T cell migration and anti-PD-1 treatment. *Elife* **2021**, *10*, e58688.
126. Grønberg, M.; Kristiansen, T.Z.; Iwahori, A.; Chang, R.; Reddy, R.; Sato, N.; Molina, H.; Jensen, O.N.; Hruban, R.H.; Goggins, M.G.; et al. Biomarker discovery from pancreatic cancer secretome using a differential proteomic approach. *Mol. Cell Proteomics.* **2006**, *5*, 157–171.
127. Tanaka, N.; Yamada, S.; Sonohara, F.; Suenaga, M.; Hayashi, M.; Takami, H.; Niwa, Y.; Hattori, N.; Iwata, N.; Kanda, M.; et al. Clinical Implications of Lysyl Oxidase-Like Protein 2 Expression in Pancreatic Cancer. *Sci. Rep.* **2018**, *8*, 9846.
128. Le Calvé, B.; Griveau, A.; Vindrieux, D.; Maréchal, R.; Wiel, C.; Svrcek, M.; Gout, J.; Azzi, L.; Payen, L.; Cros, J.; et al. Lysyl oxidase family activity promotes resistance of pancreatic ductal adenocarcinoma to chemotherapy by limiting the intratumoral anticancer drug distribution. *Oncotarget* **2016**, *7*, 32100–32112.
129. Miller, B.W.; Morton, J.P.; Pinese, M.; Saturno, G.; Jamieson, N.B.; McGhee, E.; Timpson, P.; Leach, J.; McGarry, L.; Shanks, E.; et al. Targeting the LOX/hypoxia axis reverses many of the features that make pancreatic cancer deadly: Inhibition of LOX abrogates metastasis and enhances drug efficacy. *EMBO Mol. Med.* **2015**, *7*, 1063–1076.
130. Jiang, H.; Torphy, R.J.; Steiger, K.; Hongo, H.; Ritchie, A.J.; Kriegsmann, M.; Horst, D.; Umetsu, S.E.; Joseph, N.M.; McGregor, K.; et al. Pancreatic ductal adenocarcinoma progression is restrained by stromal matrix. *J. Clin. Invest.* **2020**, *130*, 4704–4709.
131. Ma, W.; Li, T.; Wu, S.; Li, J.; Wang, X.; Li, H. LOX and ACSL5 as potential relapse markers for pancreatic cancer patients. *Cancer Biol. Ther.* **2019**, *20*, 787–798.

132. Yang, Y.L.; Tsai, M.C.; Chang, Y.H.; Wang, C.C.; Chu, P.Y.; Lin, H.Y.; Huang, Y.H. MIR29A Impedes Metastatic Behaviors in Hepatocellular Carcinoma via Targeting LOX, LOXL2, and VEGFA. *Int. J. Mol. Sci.* **2021**, *22*, 6001.
133. Lin, W.; Zhang, T.; Ding, G.; Hao, L.; Zhang, B.; Yu, J.; Pang, Y.; Geng, F.; Zhan, L.; Zhou, M.; et al. Circular RNA circ-CCT3 promotes hepatocellular carcinoma progression by regulating the miR-1287-5p/TEAD1/PTCH1/LOX axis. *Mol. Med. Rep.* **2021**, *23*, 375.
134. Wang, N.; Zhou, X.; Tang, F.; Wang, X.; Zhu, X. Identification of LOXL3-associating immune infiltration landscape and prognostic value in hepatocellular carcinoma. *Virchows Arch* **2021**, *479*, 1153–1165.
135. Umezaki, N.; Nakagawa, S.; Yamashita, Y.I.; Kitano, Y.; Arima, K.; Miyata, T.; Hiyoshi, Y.; Okabe, H.; Nitta, H.; Hayashi, H.; et al. Lysyl oxidase induces epithelial-mesenchymal transition and predicts intrahepatic metastasis of hepatocellular carcinoma. *Cancer Sci.* **2019**, *110*, 2033–2043.
136. Zhu, J.; Huang, S.; Wu, G.; Huang, C.; Li, X.; Chen, Z.; Zhao, L.; Zhao, Y. Lysyl Oxidase Is Predictive of Unfavorable Outcomes and Essential for Regulation of Vascular Endothelial Growth Factor in Hepatocellular Carcinoma. *Dig. Dis. Sci.* **2015**, *60*, 3019–3031.
137. Shao, B.; Zhao, X.; Liu, T.; Zhang, Y.; Sun, R.; Dong, X.; Liu, F.; Zhao, N.; Zhang, D.; Wu, L.; et al. LOXL2 promotes vasculogenic mimicry and tumour aggressiveness in hepatocellular carcinoma. *J. Cell Mol. Med.* **2019**, *23*, 1363–1374.
138. Choi, J.; Chung, T.; Rhee, H.; Kim, Y.J.; Jeon, Y.; Yoo, J.E.; Noh, S.; Han, D.H.; Park, Y.N. Increased Expression of the Matrix-Modifying Enzyme Lysyl Oxidase-Like 2 in Aggressive Hepatocellular Carcinoma with Poor Prognosis. *Gut Liver* **2019**, *13*, 83–92.
139. Ninomiya, G.; Yamada, S.; Hayashi, M.; Takeda, S.; Suenaga, M.; Takami, H.; Kanda, M.; Iwata, N.; Niwa, Y.; Tanaka, C.; et al. Significance of Lysyl oxidase-like 2 gene expression on the epithelial-mesenchymal status of hepatocellular carcinoma. *Oncol. Rep.* **2018**, *39*, 2664–2672.
140. Wong, C.C.; Tse, A.P.; Huang, Y.P.; Zhu, Y.T.; Chiu, D.K.; Lai, R.K.; Au, S.L.; Kai, A.K.; Lee, J.M.; Wei, L.L.; et al. Lysyl oxidase-like 2 is critical to tumor microenvironment and metastatic niche formation in hepatocellular carcinoma. *Hepatology* **2014**, *60*, 1645–1658.
141. Li, R.; Wang, Y.; Zhang, X.; Feng, M.; Ma, J.; Li, J.; Yang, X.; Fang, F.; Xia, Q.; Zhang, Z.; et al. Exosome-mediated secretion of LOXL4 promotes hepatocellular carcinoma cell invasion and metastasis. *Mol. Cancer* **2019**, *18*, 18.
142. Brett, E.A.; Sauter, M.A.; Machens, H.G.; Duscher, D. Tumor-associated collagen signatures: Pushing tumor boundaries. *Cancer Metab.* **2020**, *8*, 14.
143. Hu, C.; Zhao, Y.; Wang, X.; Zhu, T. Intratumoral Fibrosis in Facilitating Renal Cancer Aggressiveness: Underlying Mechanisms and Promising Targets. *Front. Cell Dev. Biol.* **2021**, *9*, 651620.
144. Qin, C.; Yin, H.; Liu, H.; Liu, F.; Du, Y.; Xu, T. The Significance of Fibrosis Quantification as a Marker in Assessing Pseudo-Capsule Status and Clear Cell Renal Cell Carcinoma Prognosis. *Diagnostics* **2020**, *10*, 895.
145. Ahmad, R.S.; Eubank, T.D.; Lukomski, S.; Boone, B.A. Immune Cell Modulation of the Extracellular Matrix Contributes to the Pathogenesis of Pancreatic Cancer. *Biomolecules* **2021**, *11*, 901.
146. Abayasiriwardana, K.S.; Wood, M.K.; Prêle, C.M.; Birnie, K.A.; Robinson, B.W.; Laurent, G.J.; McAnulty, R.J.; Mutsaers, S.E. Inhibition of collagen production delays malignant.t.t mesothelioma tumor growth in a murine model. *Biochem. Biophys. Res. Commun.* **2019**, *510*, 198–204.
147. Çakılkcaya, P.; Sørensen, R.R.; Jürgensen, H.J.; Krigslund, O.; Gårdsvoll, H.; Nielsen, C.F.; Santoni-Rugiu, E.; Behrendt, N.; Engelholm, L.H. The Collagen Receptor uPARAP in Malignant Mesothelioma: A Potential Diagnostic Marker and Therapeutic Target. *Int. J. Mol. Sci.* **2021**, *22*, 11452.
148. Jagirdar, R.M.; Papazoglou, E.D.; Pitaraki, E.; Kouliou, O.A.; Rouka, E.; Giannakou, L.; Giannopoulos, S.; Sinis, S.I.; Hatzoglou, C.; Gourgoulisanis, K.I.; et al. Cell and extracellular matrix interaction models in benign mesothelial and malignant pleural mesothelioma cells in 2D and 3D in-vitro. *Clin. Exp. Pharmacol. Physiol.* **2021**, *48*, 543–552.
149. Zhang, C.; Liu, S.; Wang, X.; Liu, H.; Zhou, X.; Liu, H. COL1A1 Is a Potential Prognostic Biomarker and Correlated with Immune Infiltration in Mesothelioma. *Biomed. Res. Int.* **2021**, *2021*, 5320941.
150. Balancin, M.L.; Teodoro, W.R.; Baldavira, C.M.; Prieto, T.G.; Farhat, C.; Velosa, A.P.; da Costa Souza, P.; Yaegashi, L.B.; Ab'Saber, A.M.; Takagaki, T.Y.; et al. Different histological patterns of type-V collagen levels confer a matrices-privileged tissue microenvironment for invasion in malignant tumors with prognostic value. *Pathol. Res. Pract.* **2020**, *216*, 153277.
151. Balancin, M.L.; Teodoro, W.R.; Farhat, C.; de Miranda, T.J.; Assato, A.K.; de Souza Silva, N.A.; Velosa, A.P.; Falzoni, R.; Ab'Saber, A.M.; Roden, A.C.; et al. An integrative histopathologic clustering model based on immuno-matrix elements to predict the risk of death in malignant mesothelioma. *Cancer Med.* **2020**, *9*, 4836–4849.
152. Robledo, R.; Mossman, B. Cellular and molecular mechanisms of asbestos-induced fibrosis. *J. Cell Physiol.* **1999**, *180*, 158–166.
153. Senthebane, D.A.; Rowe, A.; Thomford, N.E.; Shipanga, H.; Munro, D.; Mazeedi, M.; Almazyadi, H.A.M.; Kallmeyer, K.; Dandara, C.; Pepper, M.S.; et al. The Role of Tumor Microenvironment in Chemoresistance: To Survive, Keep Your Enemies Closer. *Int. J. Mol. Sci.* **2017**, *18*, 1586.
154. Barker, H.E.; Cox, T.R.; Erler, J.T. The rationale for targeting the LOX family in cancer. *Nat. Rev. Cancer* **2012**, *12*, 540–552.
155. Cox, T.R.; Gartland, A.; Erler, J.T. Lysyl Oxidase, a Targetable Secreted Molecule Involved in Cancer Metastasis. *Cancer Res.* **2016**, *76*, 188–192.

156. Gordon, G.J.; Rockwell, G.N.; Jensen, R.V.; Rheinwald, J.G.; Glickman, J.N.; Aronson, J.P.; Pottorf, B.J.; Nitz, M.D.; Richards, W.G.; Sugarbaker, D.J.; et al. Identification of novel candidate oncogenes and tumor suppressors in malignant pleural mesothelioma using large-scale transcriptional profiling. *Am J Pathol* **2005**, *166*, 1827–1840.
157. Rhodes, D.R.; Kalyana-Sundaram, S.; Mahavisno, V.; Varambally, R.; Yu, J.; Briggs, B.B.; Barrette, T.R.; Anstet, M.J.; Kincaid-Beal, C.; Kulkarni, P.; et al. OncoPrint 3.0: Genes, pathways, and networks in a collection of 18,000 cancer gene expression profiles. *Neoplasia* **2007**, *9*, 166–180.
158. Kim, M.K.; Kim, H.W.; Jang, M.; Oh, S.S.; Yong, S.J.; Jeong, Y.; Jung, S.H.; Choi, J.W. LOX family and ZFP207 as novel diagnostic biomarkers for malignant pleural mesothelioma. *Biomark. Res.* **2020**, *8*, 1.
159. Tang, Z.; Kang, B.; Li, C.; Chen, T.; Zhang, Z. GEPIA2: An enhanced web server for large-scale expression profiling and interactive analysis. *Nucleic. Acids Res.* **2019**, *47*, W556–W560.
160. Findlay, A.; Turner, C.; Schilter, H.; Deodhar, M.; Zhou, W.; Perryman, L.; Foot, J.; Zahoor, A.; Yao, Y.; Hamilton, R.; et al. An activity-based bioprobe differentiates a novel small molecule inhibitor from a LOXL2 antibody and provides renewed promise for anti-fibrotic therapeutic strategies. *Clin. Transl. Med.* **2021**, *11*, e572.
161. Dasler, W. Isolation of toxic crystals from sweet peas (*Lathyrus odoratus*). *Science* **1954**, *120*, 307–308.
162. Peacock, E.E.; Madden, J.W. Administration of beta-aminopropionitrile to human beings with urethral strictures: A preliminary report. *Am. J. Surg.* **1978**, *136*, 600–605.
163. Barrow, M.V.; Simpson, C.F.; Miller, E.J. Lathyrism: A review. *Q. Rev. Biol.* **1974**, *49*, 101–128.
164. Evtuguin, D.D.; Magina, S.; Evtuguin, D.V. Recent Advances in the Production and Applications of Ellagic Acid and Its Derivatives. A Review. *Molecules* **2020**, *25*, 2745.
165. Almatroodi, S.A.; Almatroudi, A.; Khan, A.A.; Alhumaydhi, F.A.; Alsahli, M.A.; Rahmani, A.H. Potential Therapeutic Targets of Epigallocatechin Gallate (EGCG), the Most Abundant Catechin in Green Tea, and Its Role in the Therapy of Various Types of Cancer. *Molecules* **2020**, *25*, 3146.
166. González-Sarriás, A.; García-Villalba, R.; Núñez-Sánchez, M.Á.; Tomé-Carneiro, J.; Zafrilla, P.; Mulero, J.; Tomás-Barberán, F.A.; Espín, J.C. Identifying the limits for ellagic acid bioavailability: A crossover pharmacokinetic study in healthy volunteers after consumption of pomegranate extracts. *J. Funct. Foods* **2015**, *19*, 225–235.
167. Nakagawa, K.; Miyazawa, T. Chemiluminescence-high-performance liquid chromatographic determination of tea catechin, (-)-epigallocatechin 3-gallate, at picomole levels in rat and human plasma. *Anal. Biochem.* **1997**, *248*, 41–49.
168. Gupta, A.; Mumper, R.J. Elevated copper and oxidative stress in cancer cells as a target for cancer treatment. *Cancer Treat. Rev.* **2009**, *35*, 32–46.
169. Mounajjed, T.; Oxentenko, A.S.; Qureshi, H.; Smyrk, T.C. Revisiting the topic of histochemically detectable copper in various liver diseases with special focus on venous outflow impairment. *Am. J. Clin. Pathol.* **2013**, *139*, 79–86.
170. Baldari, S.; Di Rocco, G.; Toietta, G. Current Biomedical Use of Copper Chelation Therapy. *Int. J. Mol. Sci.* **2020**, *21*, 1069.
171. Keiser, H.R.; Sjoerdsma, A. Studies on beta-aminopropionitrile in patients with scleroderma. *Clin. Pharmacol. Ther.* **1967**, *8*, 593–602.
172. Verstovsek, S.; Savona, M.R.; Mesa, R.A.; Dong, H.; Maltzman, J.D.; Sharma, S.; Silverman, J.; Oh, S.T.; Gotlib, J. A phase 2 study of simtuzumab in patients with primary, post-polycythemia vera or post-essential thrombocythemia myelofibrosis. *Br. J. Haematol.* **2017**, *176*, 939–949.
173. Muir, A.J.; Levy, C.; Janssen, H.L.A.; Montano-Loza, A.J.; Shiffman, M.L.; Caldwell, S.; Luketic, V.; Ding, D.; Jia, C.; McColgan, B.J.; et al. Simtuzumab for Primary Sclerosing Cholangitis: Phase 2 Study Results With Insights on the Natural History of the Disease. *Hepatology* **2019**, *69*, 684–698.
174. Raghu, G.; Brown, K.K.; Collard, H.R.; Cottin, V.; Gibson, K.F.; Kaner, R.J.; Lederer, D.J.; Martinez, F.J.; Noble, P.W.; Song, J.W.; et al. Efficacy of simtuzumab versus placebo in patients with idiopathic pulmonary fibrosis: A randomised, double-blind, controlled, phase 2 trial. *Lancet Respir. Med.* **2017**, *5*, 22–32.
175. Meissner, E.G.; McLaughlin, M.; Matthews, L.; Gharib, A.M.; Wood, B.J.; Levy, E.; Sinkus, R.; Virtaneva, K.; Sturdevant, D.; Martens, C.; et al. Simtuzumab treatment of advanced liver fibrosis in HIV and HCV-infected adults: Results of a 6-month open-label safety trial. *Liver Int.* **2016**, *36*, 1783–1792.
176. Benson, A.B., 3rd; Wainberg, Z.A.; Hecht, J.R.; Vyushkov, D.; Dong, H.; Bendell, J.; Kudrik, F. A Phase II Randomized, Double-Blind, Placebo-Controlled Study of Simtuzumab or Placebo in Combination with Gemcitabine for the First-Line Treatment of Pancreatic Adenocarcinoma. *Oncologist* **2017**, *22*, 241–e215.
177. Hecht, J.R.; Benson, A.B., 3rd; Vyushkov, D.; Yang, Y.; Bendell, J.; Verma, U. A Phase II, Randomized, Double-Blind, Placebo-Controlled Study of Simtuzumab in Combination with FOLFIRI for the Second-Line Treatment of Metastatic KRAS Mutant Colorectal Adenocarcinoma. *Oncologist* **2017**, *22*, 243–e223.
178. Harrison, S.A.; Abdelmalek, M.F.; Caldwell, S.; Shiffman, M.L.; Diehl, A.M.; Ghalib, R.; Lawitz, E.J.; Rockey, D.C.; Schall, R.A.; Jia, C.; et al. Simtuzumab Is Ineffective for Patients With Bridging Fibrosis or Compensated Cirrhosis Caused by Nonalcoholic Steatohepatitis. *Gastroenterology* **2018**, *155*, 1140–1153.
179. Sanyal, A.J.; Anstee, Q.M.; Trauner, M.; Lawitz, E.J.; Abdelmalek, M.F.; Ding, D.; Han, L.; Jia, C.; Huss, R.S.; Chung, C.; et al. Cirrhosis Regression is Associated with Improved Clinical Outcomes in Patients with Nonalcoholic Steatohepatitis. *Hepatology* **2021**. 00:1–12. <https://doi.org/10.1002/hep.32204>

180. Gee, J.R.; Saltzstein, D.R.; Kim, K.; Kolesar, J.; Hu, W.; Havighurst, T.C.; Wollmer, B.W.; Stublaski, J.; Downs, T.; Mukhtar, H.; et al. A Phase II Randomized, Double-blind, Presurgical Trial of Polyphenon E in Bladder Cancer Patients to Evaluate Pharmacodynamics and Bladder Tissue Biomarkers. *Cancer Prev. Res.* **2017**, *10*, 298–307.
181. Chapman, H.A.; Wei, Y.; Montas, G.; Leong, D.; Golden, J.A.; Trinh, B.N.; Wolters, P.J.; Le Saux, C.J.; Jones, K.D.; Hills, N.K.; et al. Reversal of TGF β 1-Driven Profibrotic State in Patients with Pulmonary Fibrosis. *N. Engl. J. Med.* **2020**, *382*, 1068–1070.
182. Pass, H.I.; Brewer, G.J.; Dick, R.; Carbone, M.; Merajver, S. A phase II trial of tetrathiomolybdate after surgery for malignant mesothelioma: Final results. *Ann. Thorac. Surg.* **2008**, *86*, 383–389; discussion 390.
183. Redman, B.G.; Esper, P.; Pan, Q.; Dunn, R.L.; Hussain, H.K.; Chenevert, T.; Brewer, G.J.; Merajver, S.D. Phase II trial of tetrathiomolybdate in patients with advanced kidney cancer. *Clin. Cancer Res.* **2003**, *9*, 1666–1672.
184. Brewer, G.J.; Dick, R.D.; Grover, D.K.; LeClaire, V.; Tseng, M.; Wicha, M.; Pienta, K.; Redman, B.G.; Jahan, T.; Sondak, V.K.; et al. Treatment of metastatic cancer with tetrathiomolybdate, an anticopper, antiangiogenic agent: Phase I study. *Clin. Cancer Res.* **2000**, *6*, 1–10.
185. Chan, N.; Willis, A.; Kornhauser, N.; Ward, M.M.; Lee, S.B.; Nackos, E.; Seo, B.R.; Chuang, E.; Cigler, T.; Moore, A.; et al. Influencing the Tumor Microenvironment: A Phase II Study of Copper Depletion Using Tetrathiomolybdate in Patients with Breast Cancer at High Risk for Recurrence and in Preclinical Models of Lung Metastases. *Clin. Cancer Res.* **2017**, *23*, 666–676.
186. Selman, M.; Carrillo, G.; Salas, J.; Padilla, R.P.; Pérez-Chavira, R.; Sansores, R.; Chapela, R. Colchicine, D-penicillamine, and prednisone in the treatment of idiopathic pulmonary fibrosis: A controlled clinical trial. *Chest* **1998**, *114*, 507–512.
187. Clements, P.J.; Seibold, J.R.; Furst, D.E.; Mayes, M.; White, B.; Wigley, F.; Weisman, M.D.; Barr, W.; Moreland, L.; Medsger, T.A., Jr.; et al. High-dose versus low-dose D-penicillamine in early diffuse systemic sclerosis trial: Lessons learned. *Semin. Arthritis Rheum.* **2004**, *33*, 249–263.
188. Brem, S.; Grossman, S.A.; Carson, K.A.; New, P.; Phuphanich, S.; Alavi, J.B.; Mikkelsen, T.; Fisher, J.D. Phase 2 trial of copper depletion and penicillamine as antiangiogenesis therapy of glioblastoma. *Neuro Oncol.* **2005**, *7*, 246–253.
189. Barry-Hamilton, V.; Spangler, R.; Marshall, D.; McCauley, S.; Rodriguez, H.M.; Oyasu, M.; Mikels, A.; Vaysberg, M.; Ghermazien, H.; Wai, C.; et al. Allosteric inhibition of lysyl oxidase-like-2 impedes the development of a pathologic microenvironment. *Nat. Med.* **2010**, *16*, 1009–1017.
190. Rossow, L.; Veitl, S.; Vorlová, S.; Wax, J.K.; Kuhn, A.E.; Maltzahn, V.; Upcin, B.; Karl, F.; Hoffmann, H.; Gätzner, S.; et al. LOX-catalyzed collagen stabilization is a proximal cause for intrinsic resistance to chemotherapy. *Oncogene* **2018**, *37*, 4921–4940.
191. Chen, P.; Zhao, D.; Li, J.; Liang, X.; Li, J.; Chang, A.; Henry, V.K.; Lan, Z.; Spring, D.J.; Rao, G.; et al. Symbiotic Macrophage-Glioma Cell Interactions Reveal Synthetic Lethality in PTEN-Null Glioma. *Cancer Cell* **2019**, *35*, 868–884.e866.
192. Haj-Shomali, J.; Vorontsova, A.; Barenholz-Cohen, T.; Levi-Galibov, O.; Devarasetty, M.; Timaner, M.; Raviv, Z.; Cooper, T.J.; Soker, S.; Hasson, P.; et al. T cells promote metastasis by regulating extracellular matrix remodeling following chemotherapy. *Cancer Res.* **2022**, *82*, 278–291.
193. Tan, H.Y.; Wang, N.; Zhang, C.; Chan, Y.T.; Yuen, M.F.; Feng, Y. Lysyl Oxidase-Like 4 Fosters an Immunosuppressive Microenvironment During Hepatocarcinogenesis. *Hepatology* **2021**, *73*, 2326–2341.
194. Collier, J.L.; Weiss, S.A.; Pauken, K.E.; Sen, D.R.; Sharpe, A.H. Not-so-opposite ends of the spectrum: CD8(+) T cell dysfunction across chronic infection, cancer and autoimmunity. *Nat. Immunol.* **2021**, *22*, 809–819.