

Figure S1

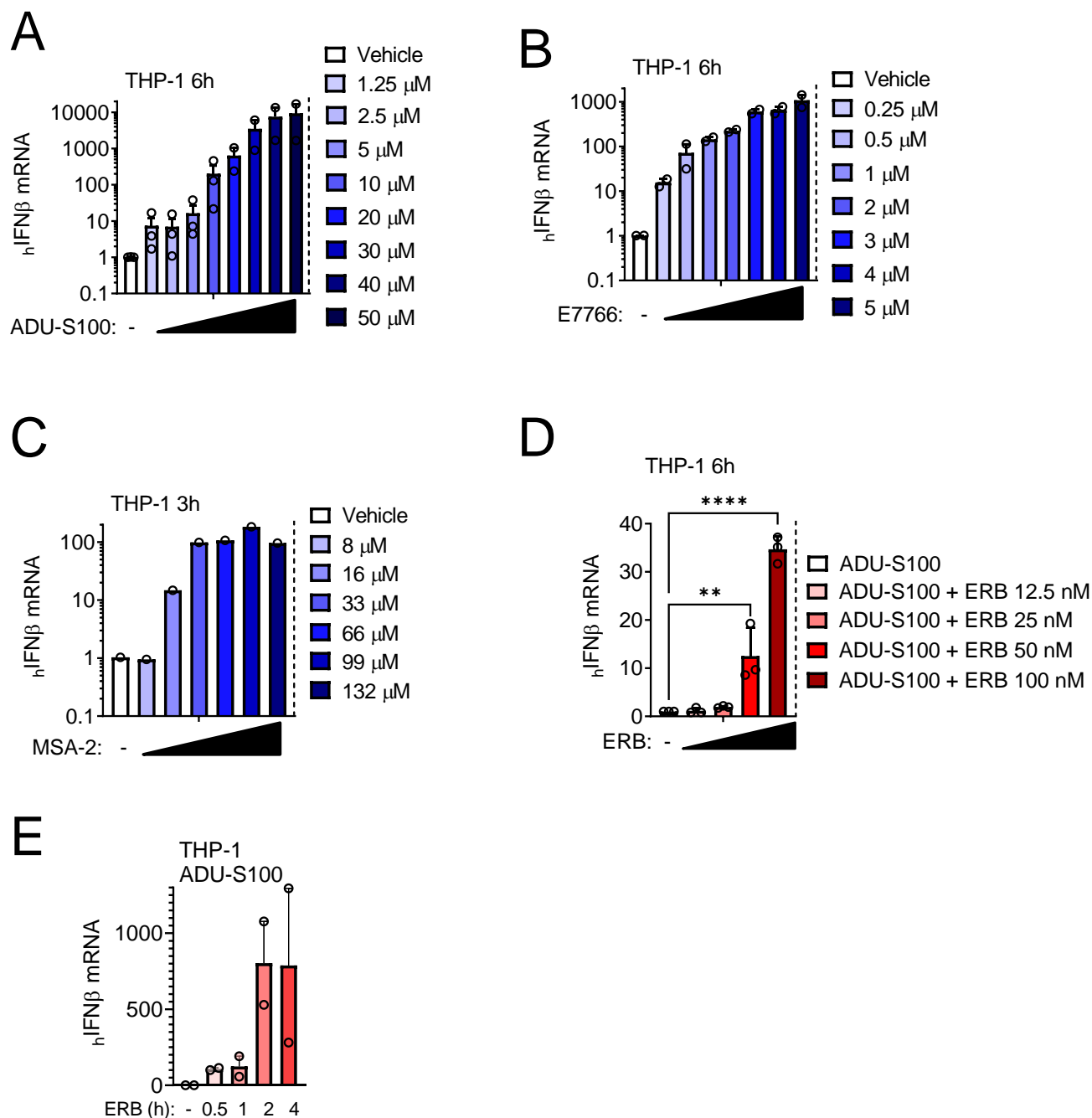


Figure S1. Concentration-dependence of STING agonists and eribulin on IFN β expression in THP-1 cells. Human IFN β mRNA expression in THP-1 cells treated with indicated concentrations of (A) ADU-S100 for 6 h, (B) E7766 for 6 h, or (C) MSA-2 for 3 h. (D) Human IFN β mRNA expression in THP-1 cells treated with 10 μ M ADU-S100 and indicated concentrations of eribulin (ERB) for 6 h. (E) Human IFN β mRNA expression in THP-1 cells treated with 10 μ M ADU-S100 for 6 h in combination with 100 nM ERB added for the indicated duration during the 6 h ADU-S100 treatment. Significance of eribulin determined by one-way ANOVA with Dunnett's posthoc test comparing all conditions to ADU-S100 alone. ** $p < 0.01$, **** $p < 0.0001$.

Figure S2

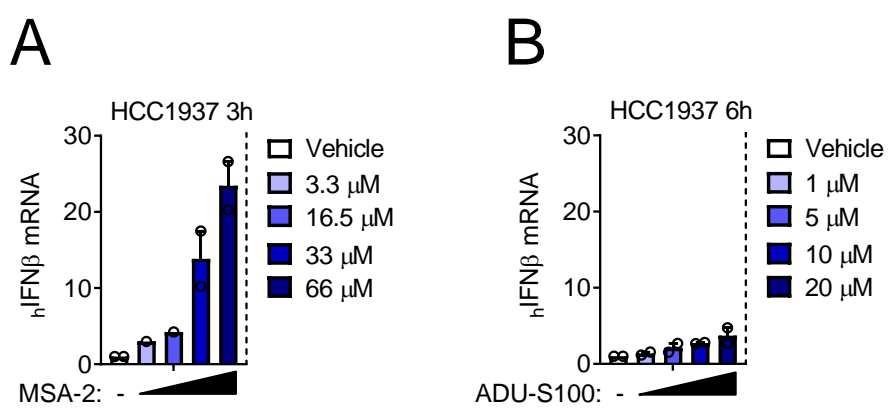


Figure S2. Concentration-dependence of STING agonists on IFN β expression in HCC1937 TNBC cells. Human *IFN β* mRNA expression in HCC1937 cells treated with indicated concentrations of (A) MSA-2 for 3 h or (B) ADU-S100 for 6 h.

Figure S3

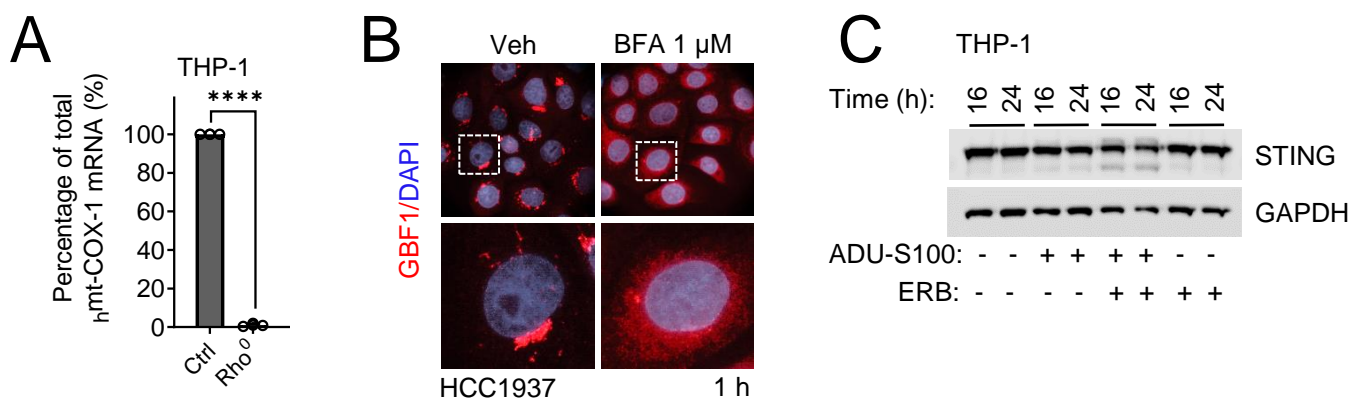
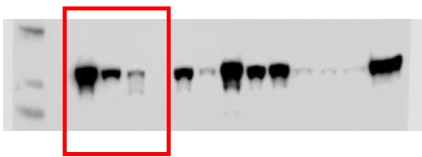


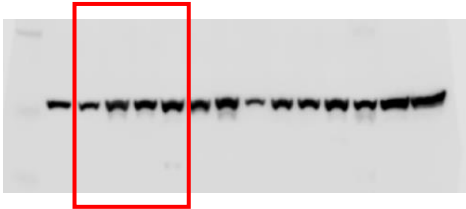
Figure S3. Eribulin's effect on the canonical STING signaling pathway. **(A)** Expression of the mitochondrially-encoded human cytochrome c oxidase subunit 1 (*COX-1*) mRNA in control and ethidium bromide (EtBr) cultured THP-1 cells (Rho⁰). Significance is determined by paired t-test. *****p* < 0.0001. **(B)** Immunofluorescence images of the cis-Golgi marker GBF1 and DAPI in HCC1937 cells treated with 1 μ M BFA for 1 h. The white box insert represents an enlarged representative cell for detail, below. **(C)** Immunoblot of STING and GAPDH in THP-1 cells treated with 10 μ M ADU-S100 with or without 100 nM ERB for 16 or 24 h.

Figure S4

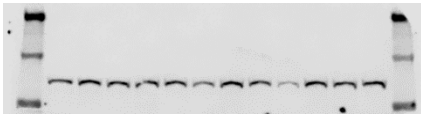
STING
Cell Lines: THP-1, HCC1937, HCC1806, MDA-MB-453
MW: 35 kDa



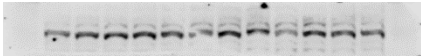
GAPDH
Cell Lines: THP-1, HCC1937, HCC1806, MDA-MB-453
MW: 36 kDa



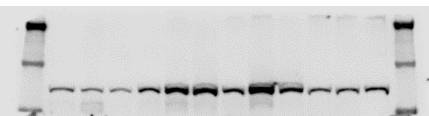
TBK1
Cell Line: THP-1
MW: 84 kDa



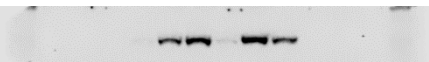
IRF3
Cell Line: THP-1
MW: 47 kDa



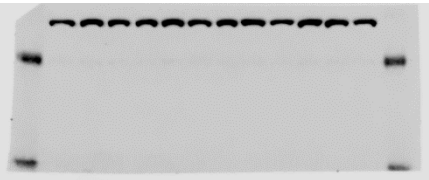
P-TBK1
Cell Line: THP-1
MW: 84 kDa



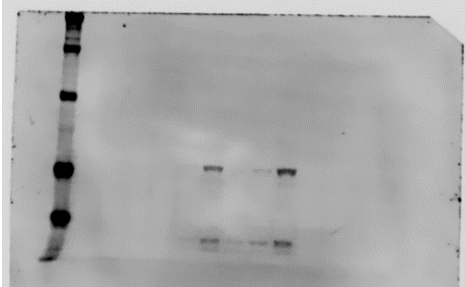
P-IRF3
Cell Line: THP-1
MW: 47 kDa



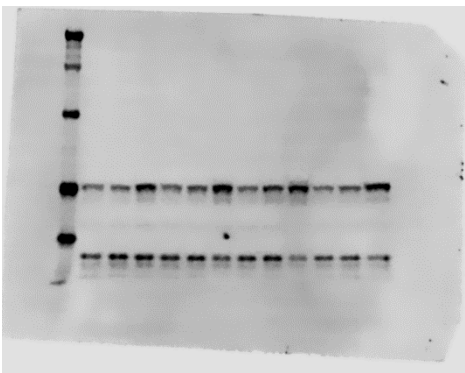
GAPDH
Cell Line: THP-1
MW: 36 kDa



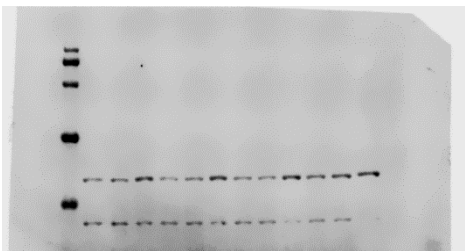
P-STING
Cell Line: THP-1
MW: 40 kDa



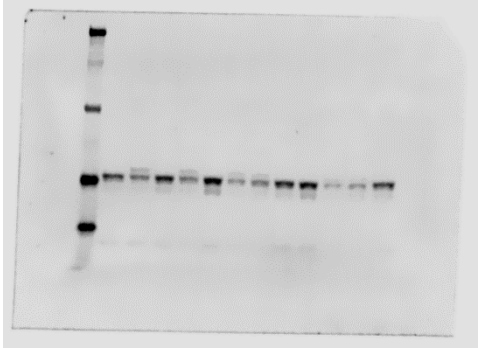
Total STING
Cell Line: THP-1
MW: 35 kDa



GAPDH
Cell Line: THP-1
MW: 36 kDa



Total STING
Cell Line: HCC1937
MW: 35 kDa



GAPDH
Cell Line: HCC1937
MW: 36 kDa

