

Title: Prognostic Significance of Cuproptosis-Related Gene Signatures in Breast Cancer Based on Transcriptomic Data Analysis

Figure legend for Supplementary figures:

Figure S1. Workflow diagram. The specific workflow graph of data analysis.

Figure S2. Identification of cancer patient subclusters based on the CRGs. (A) The relative change in area under consensus CDF curve for $k=2$ to 9. (B-E) The consensus clustering of BRCA patients (k was set as 6-9).

Figure S3. Comparison of the AUC between our risk model and other gene models. (A-B) The 1-year ROC curve analysis between our risk model and Jia Li et al., (A) and wei Li et al., (B) gene risk models. (C-D) The 3-year ROC curve analysis between our risk model and Jia Li et al.(C) and wei Li et al.(D) gene risk models. (E-F) The 5-year ROC curve analysis between our risk model and Jia Li et al. (E) and wei Li et al. (F) gene risk models.

Figure S4. Molecular biological functional analysis based on the DEGs among the two-risk groups in the TCGA cohort. (A-B) Bar plot for KEGG pathways of high-risk group (A) and low risk group (B). (C-D) Bubble plot for GO enrichment of high-risk group (C) and low risk group (D).

Figure S5. Comparison of the relationship between immune cells and risk score. (A) The relationship between immune cells and immune pathways. (B-N) the relationship between immune cells and risk score.

Figure S6. Comparison of the relationship between immune pathways and risk score. (A-P) The relationship between immune cells and risk score.

Figure S7. Screening independent prognostic factor and construction of clinical nomogram model. (A) Univariate analysis of indicators in TCGA cohort. (B) Multivariate analysis of indicators in TCGA cohort. (C) Univariate analysis of indicators in GEO cohort. (D) Multivariate analysis of indicators in GEO cohort. (E) Nomogram construction based on clinical indicators and risk score. (F) The calibration curves of nomogram at 1, 3 and 5 years.

Figure S8. Comparison of AUC and DCA between our nomogram model and TNM model. (A, D) 1-year AUC and DCA values. (B,E) 3-year AUC and DCA values . (C,F) 5-year AUC and DCA values.

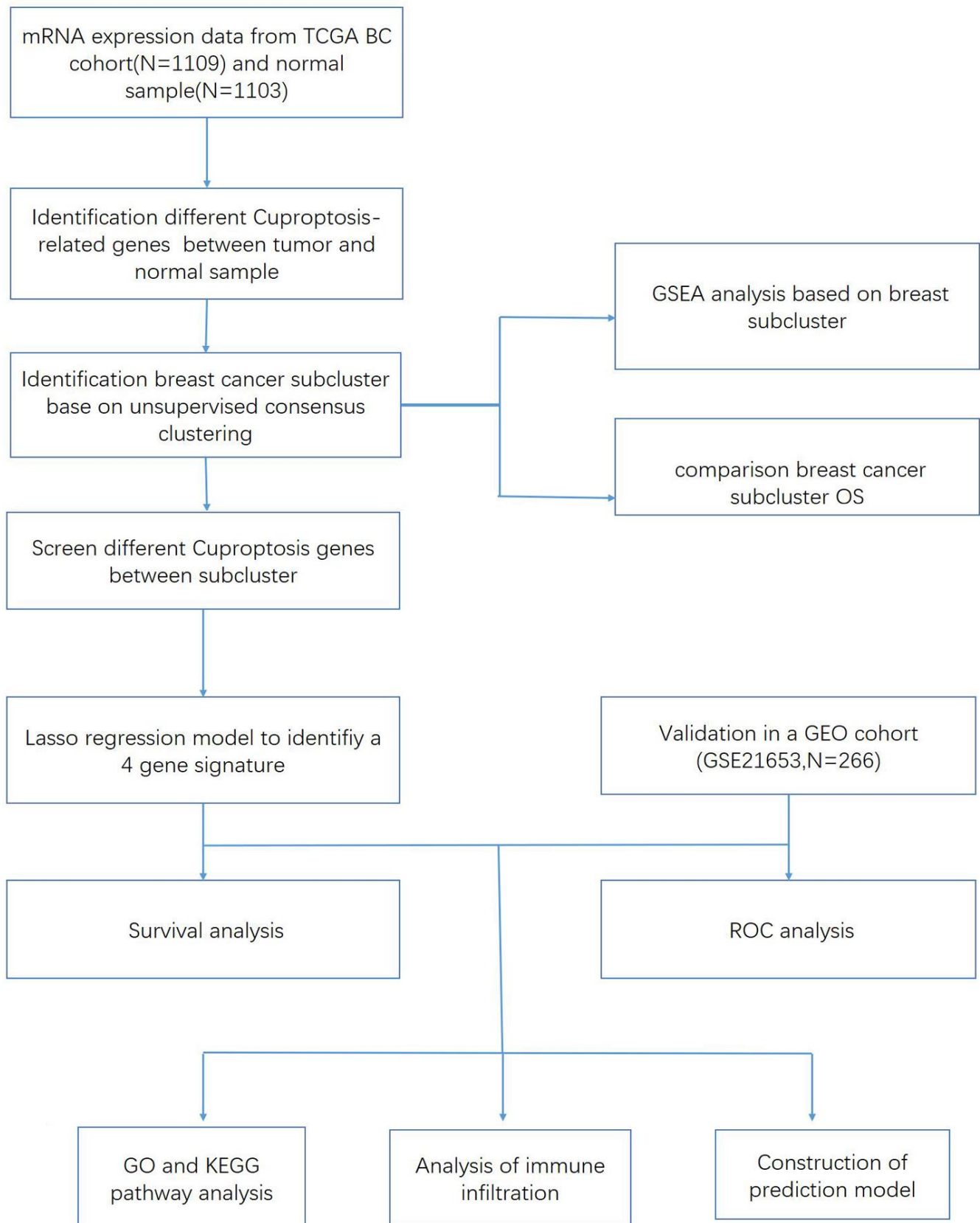
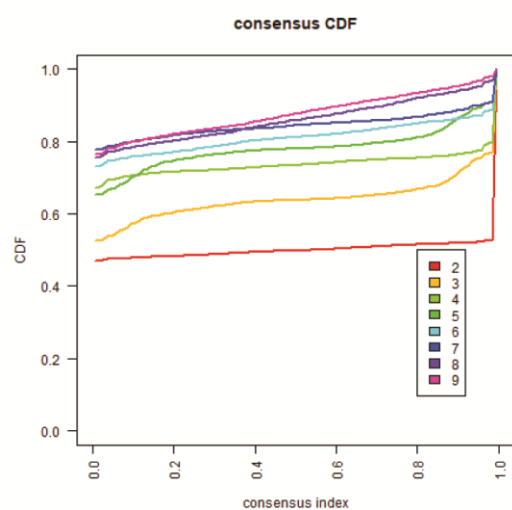
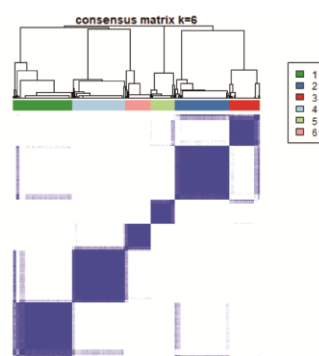


Figure S1

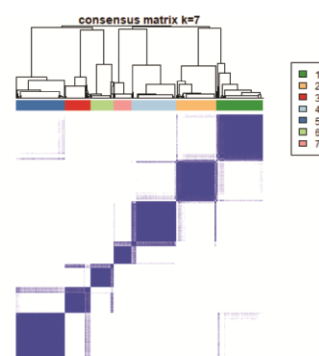
A



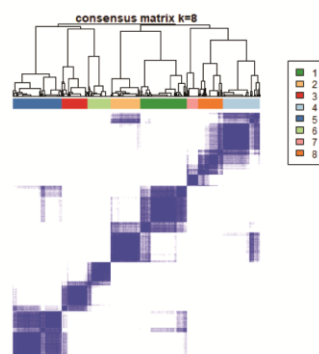
B



C



D



E

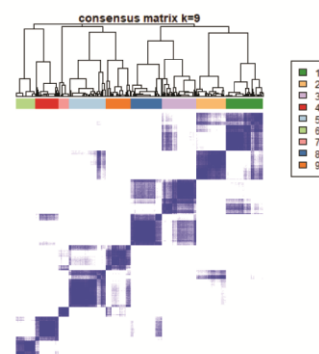
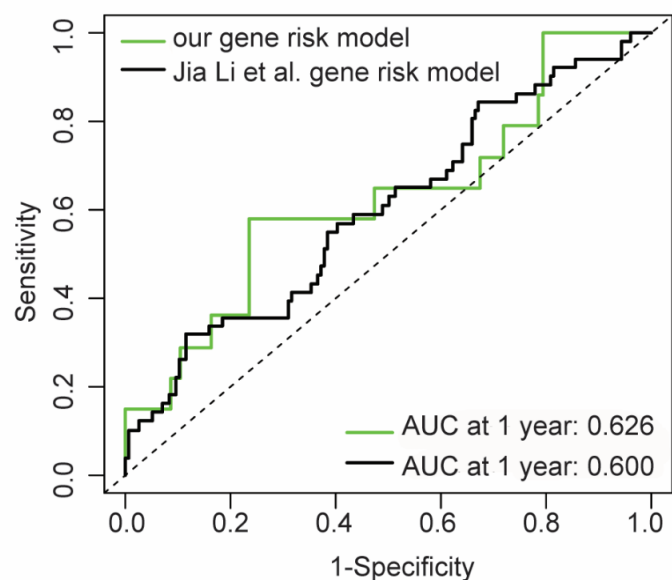
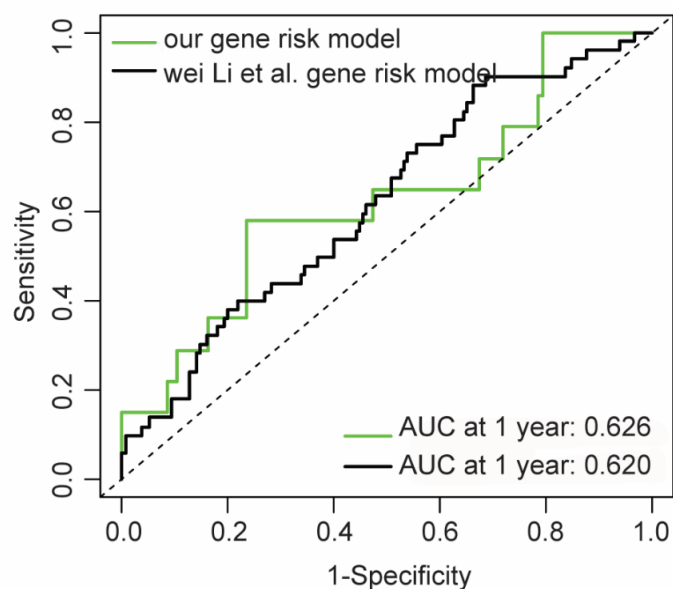


Figure S2

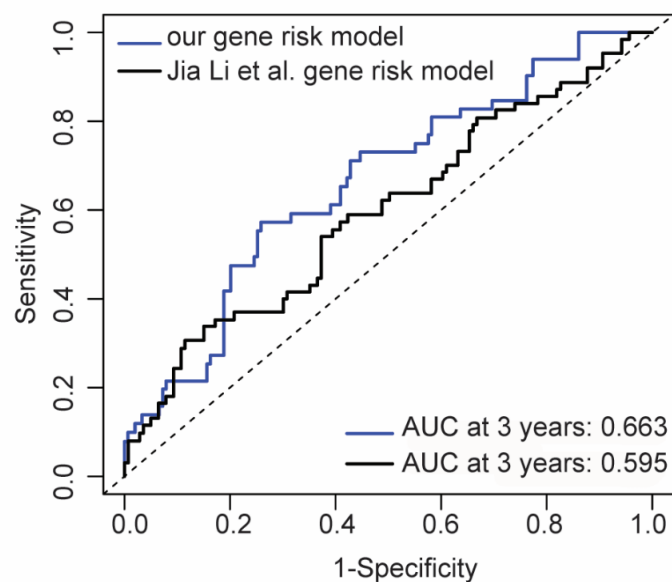
A



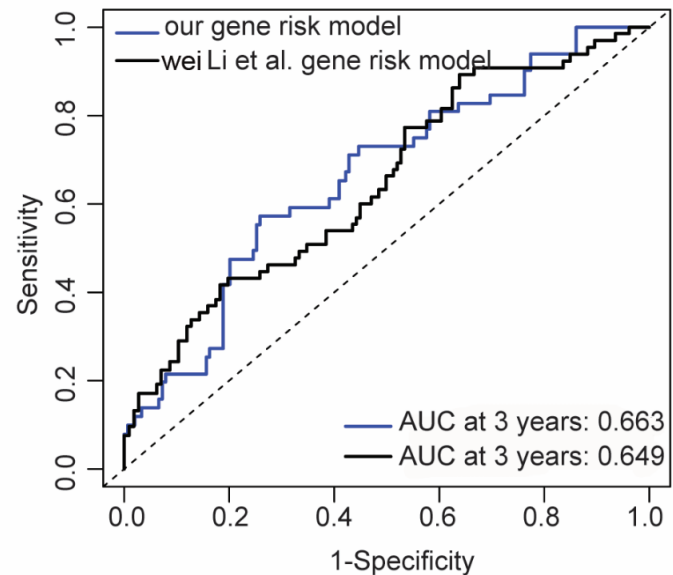
B



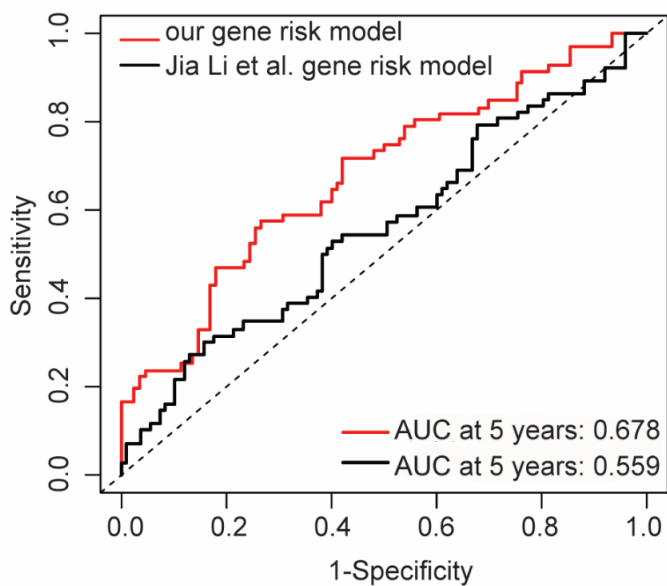
C



D



E



F

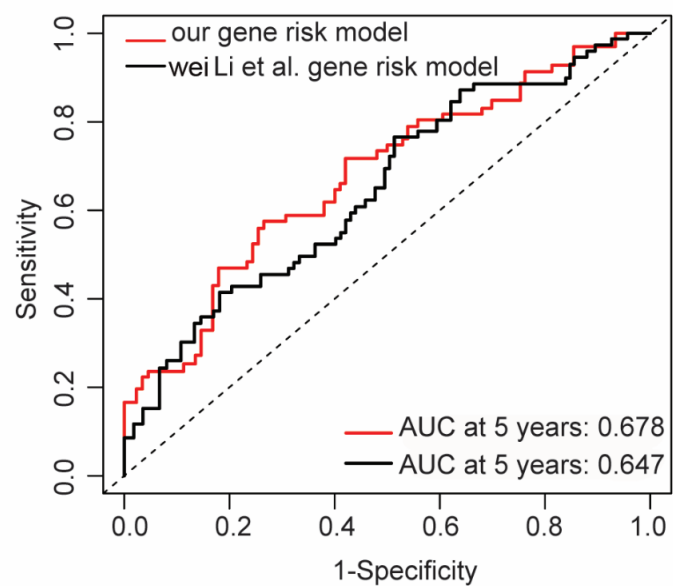
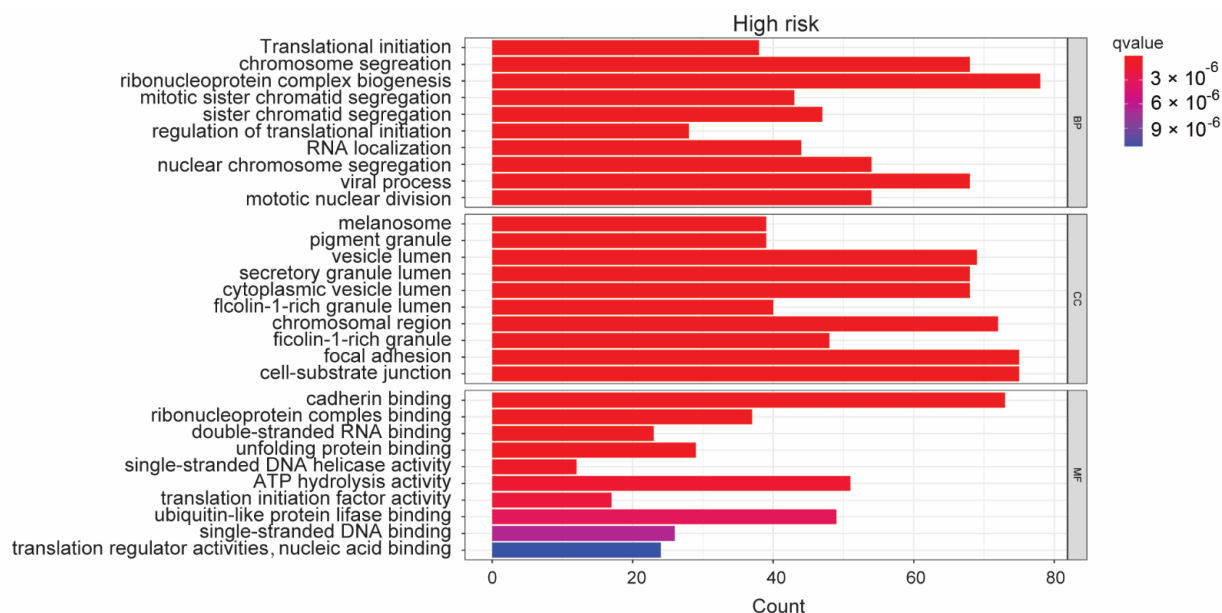
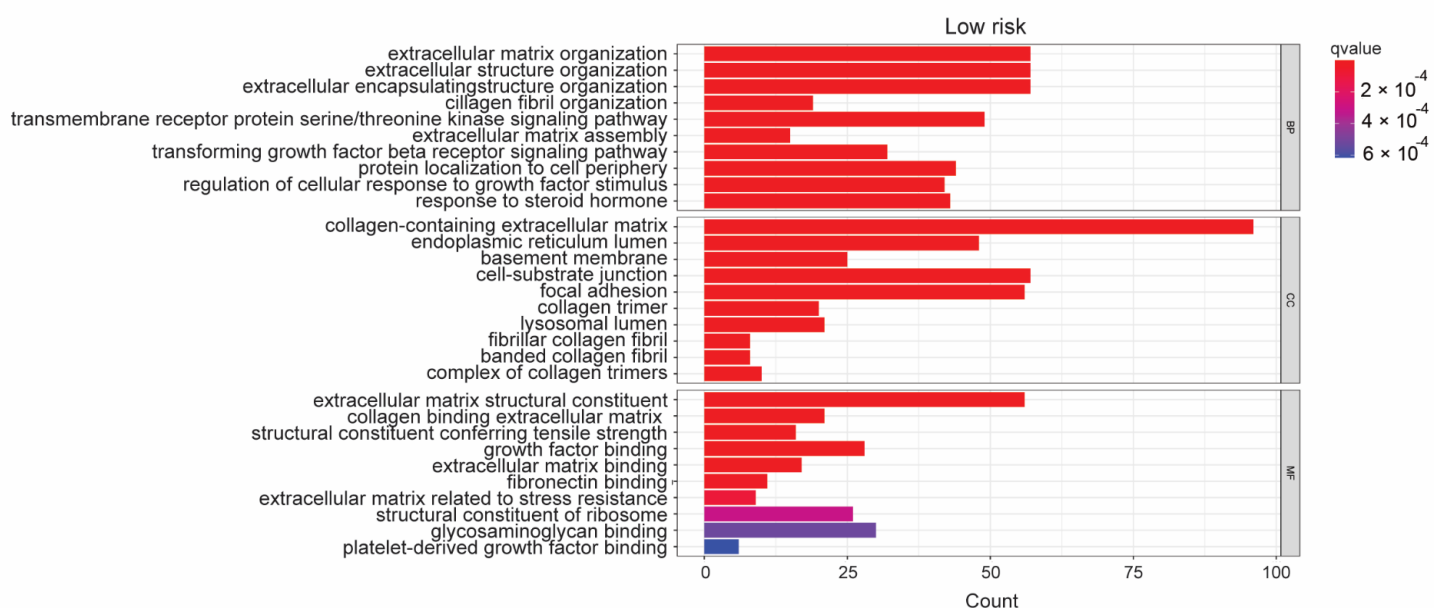


Figure S3

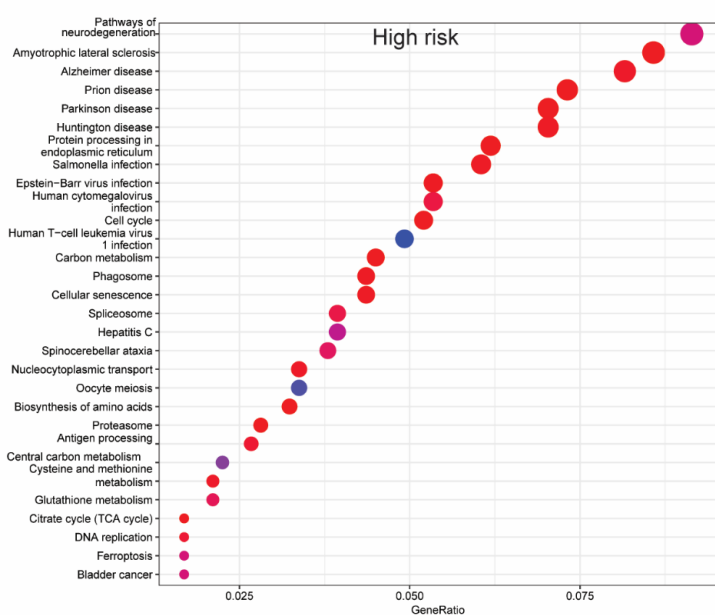
A



B



C



D

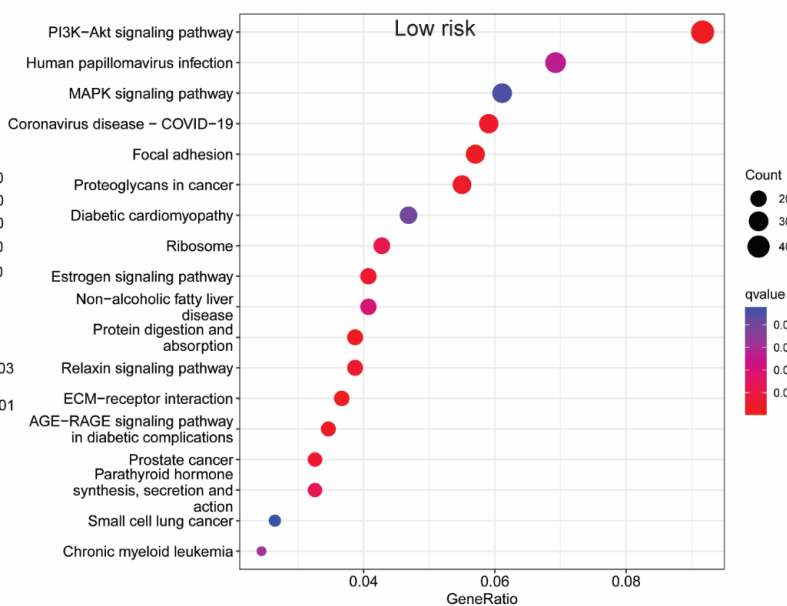


Figure S4

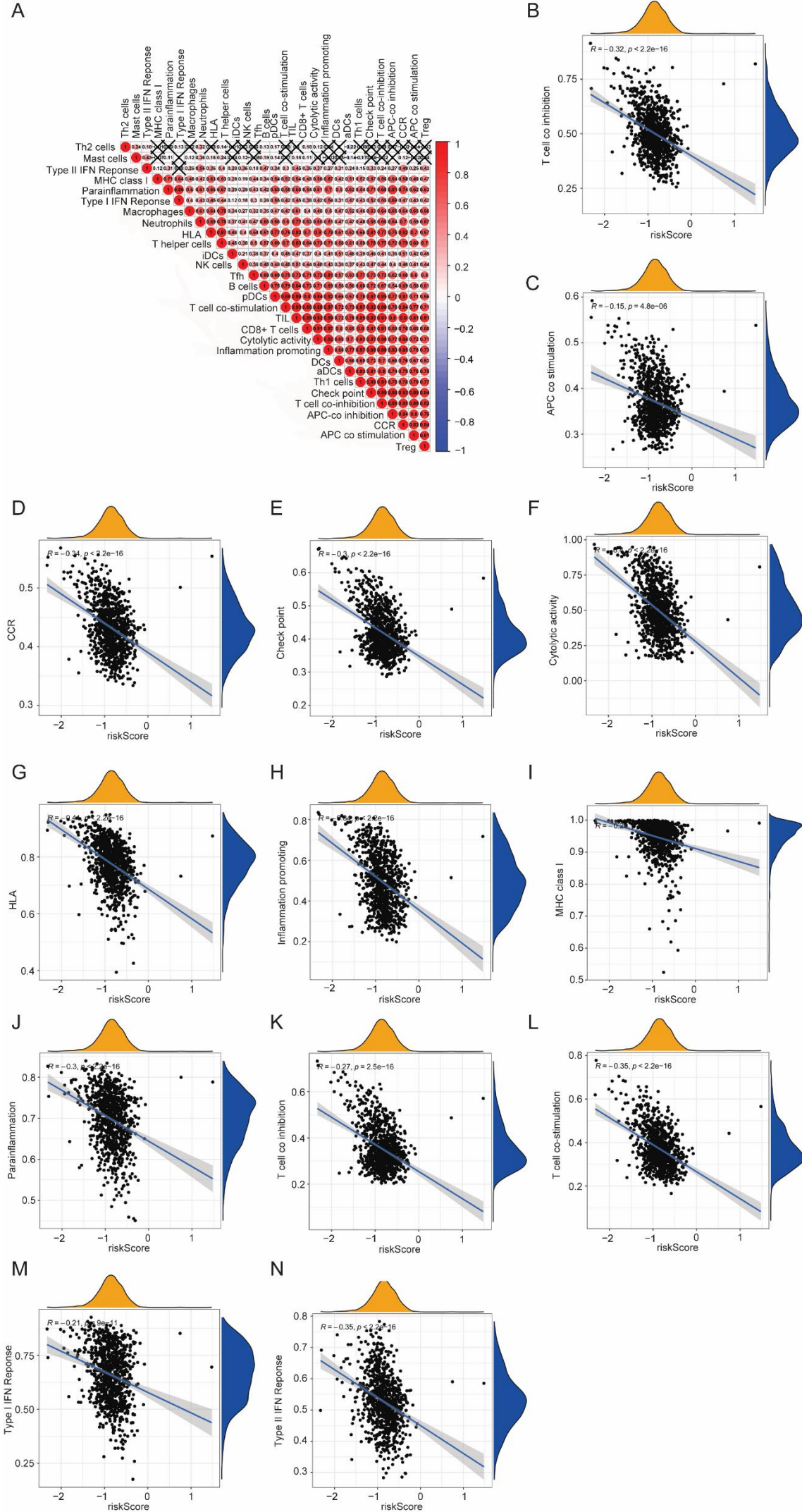


Figure S5

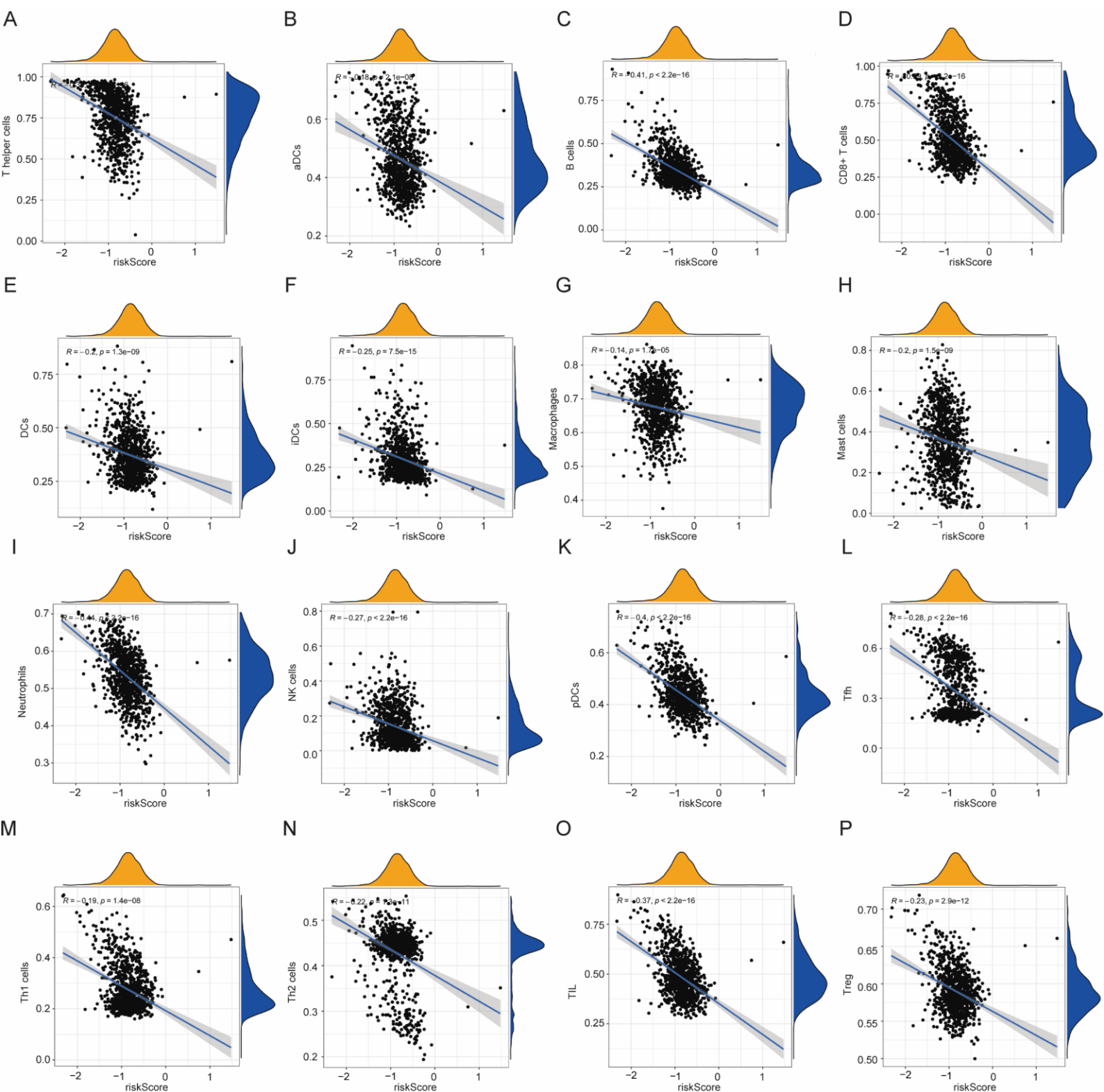
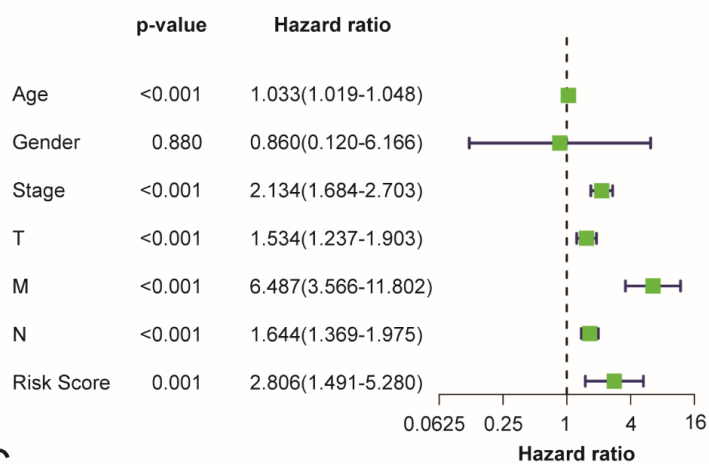
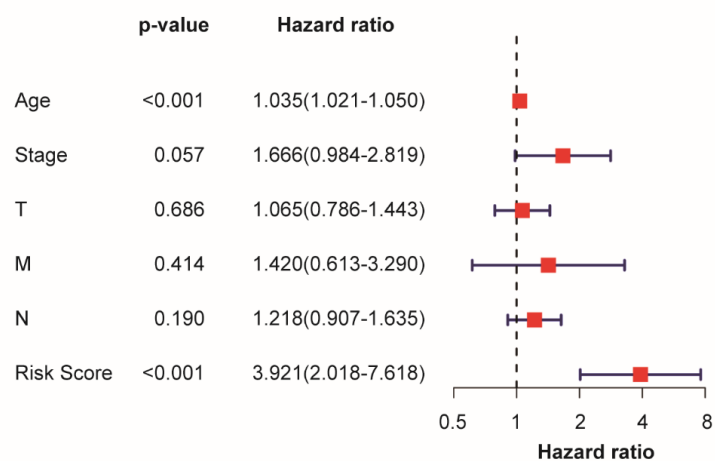


Figure S6

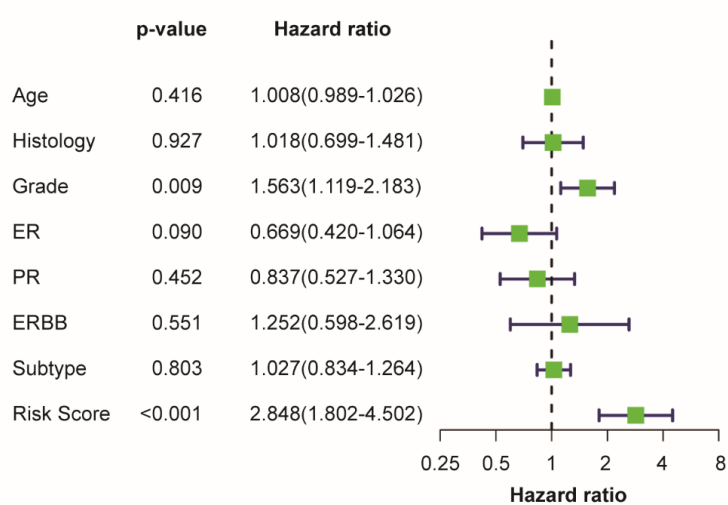
A



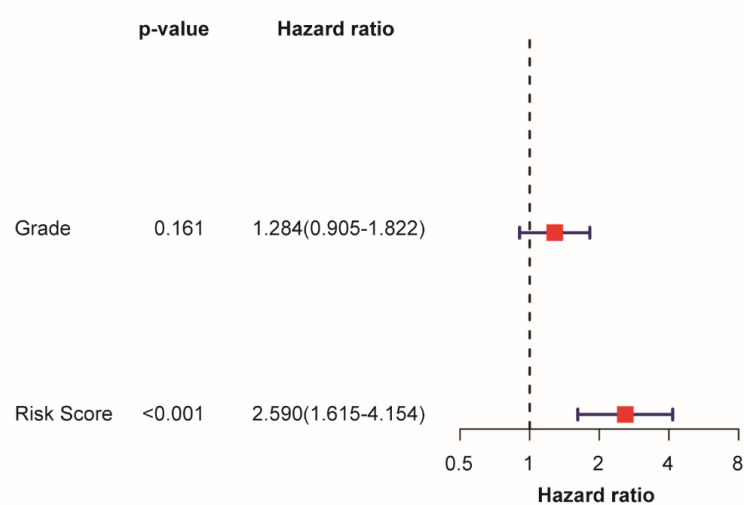
B



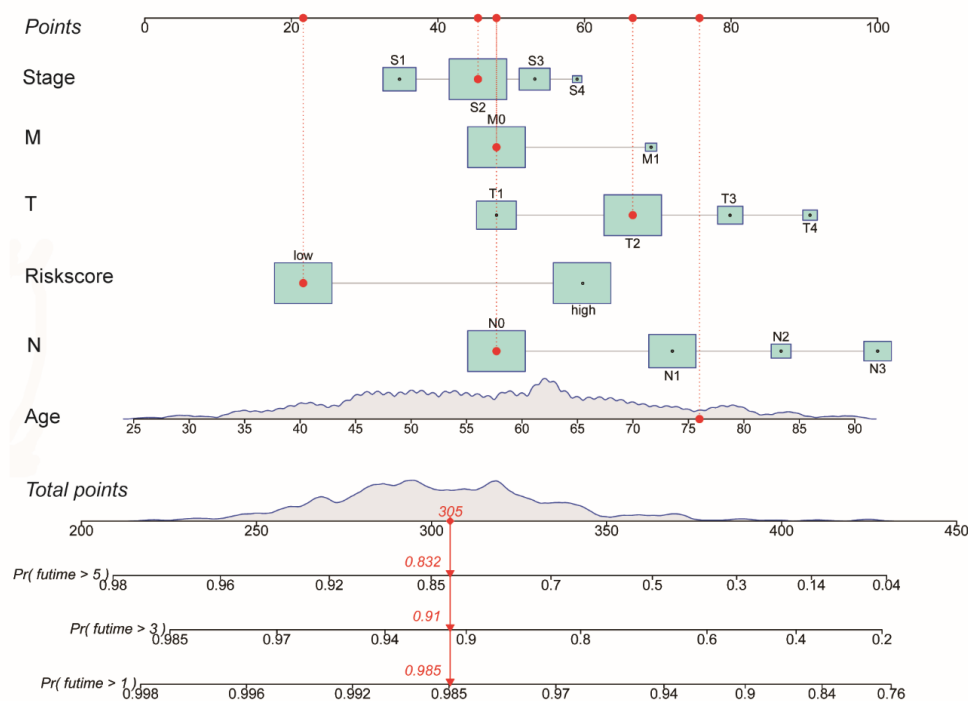
C



D



E



F

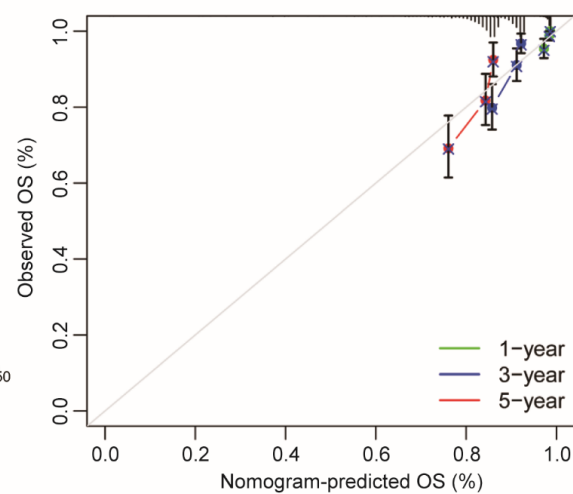


Figure S7

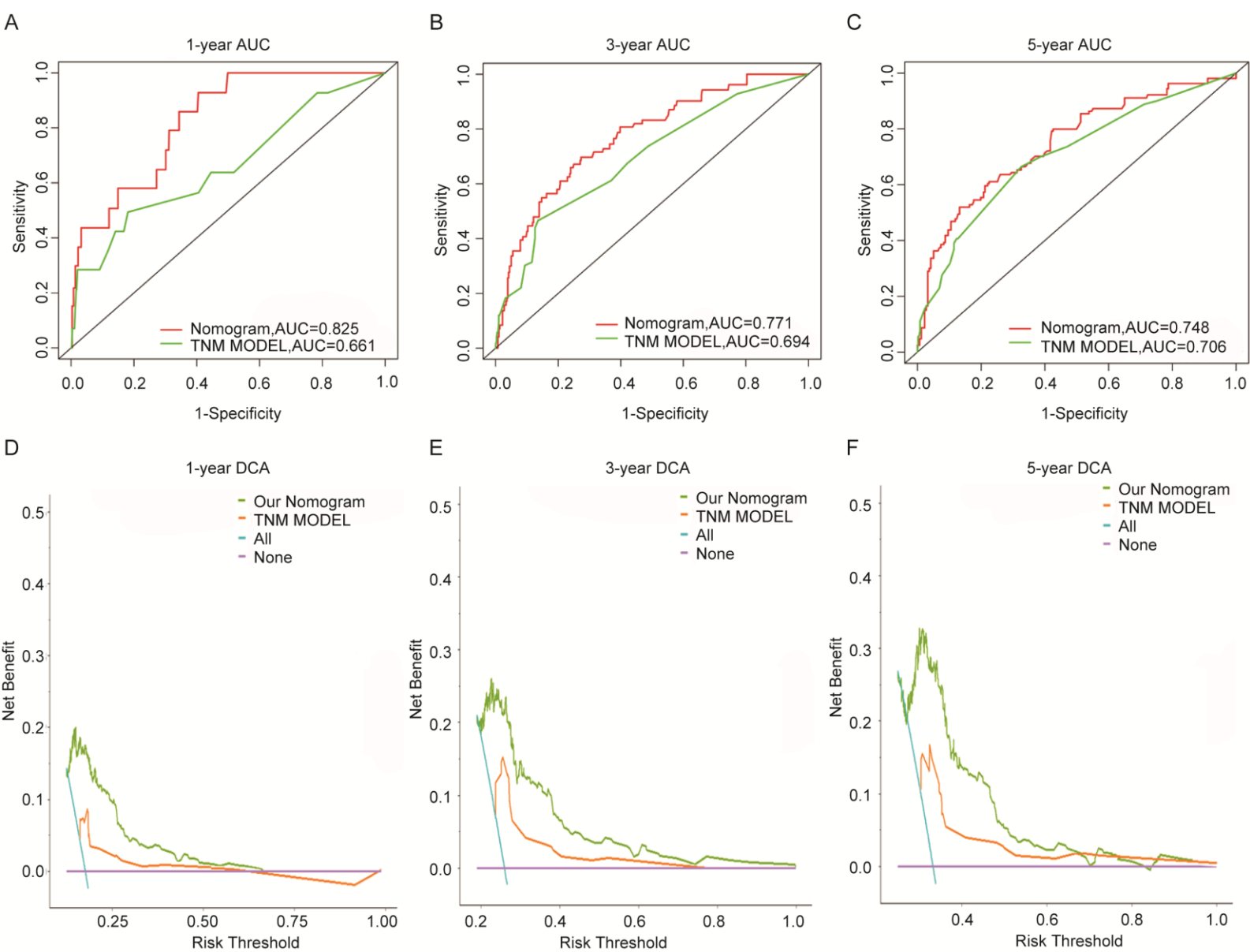


Figure S8