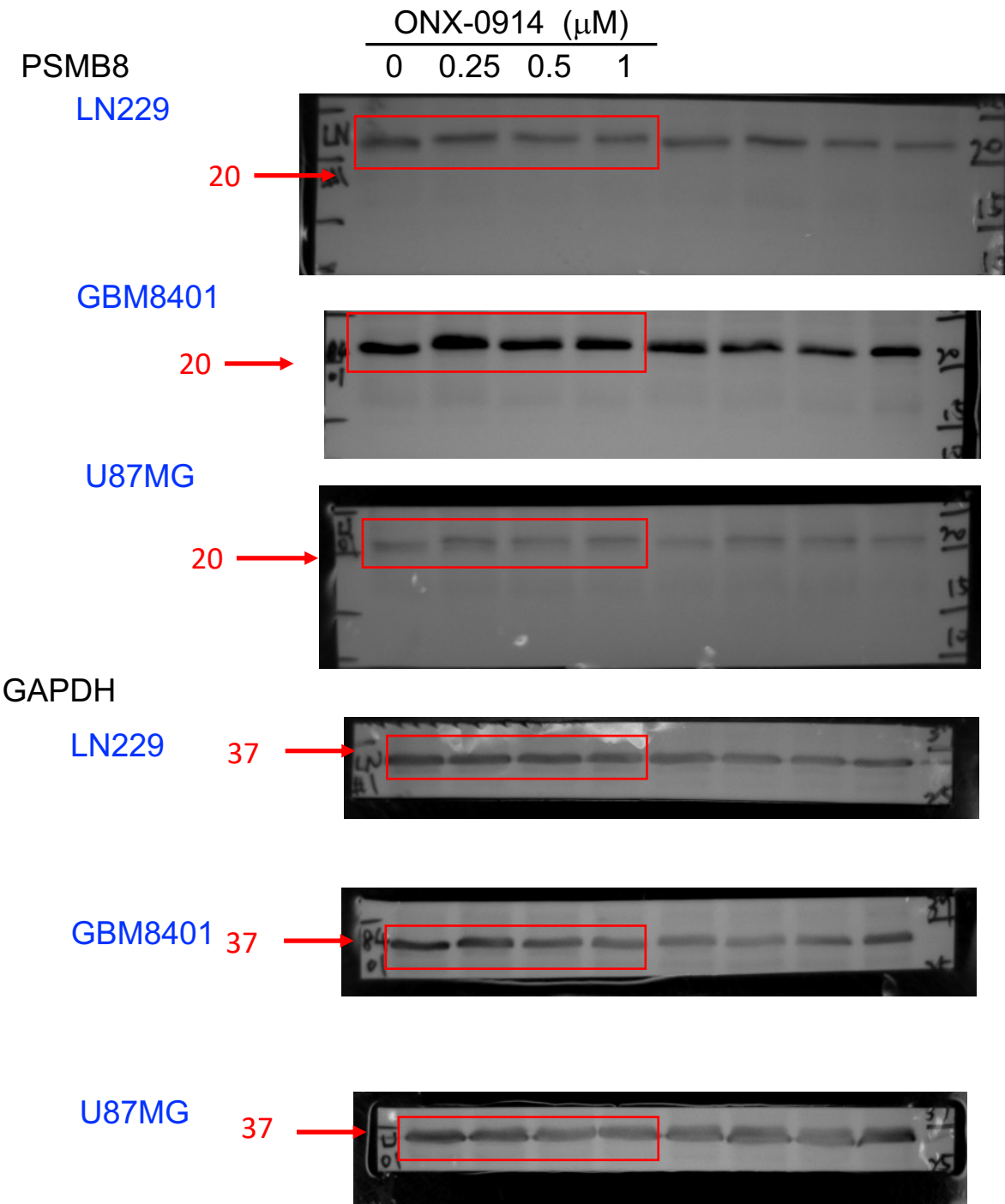


Fig 1B



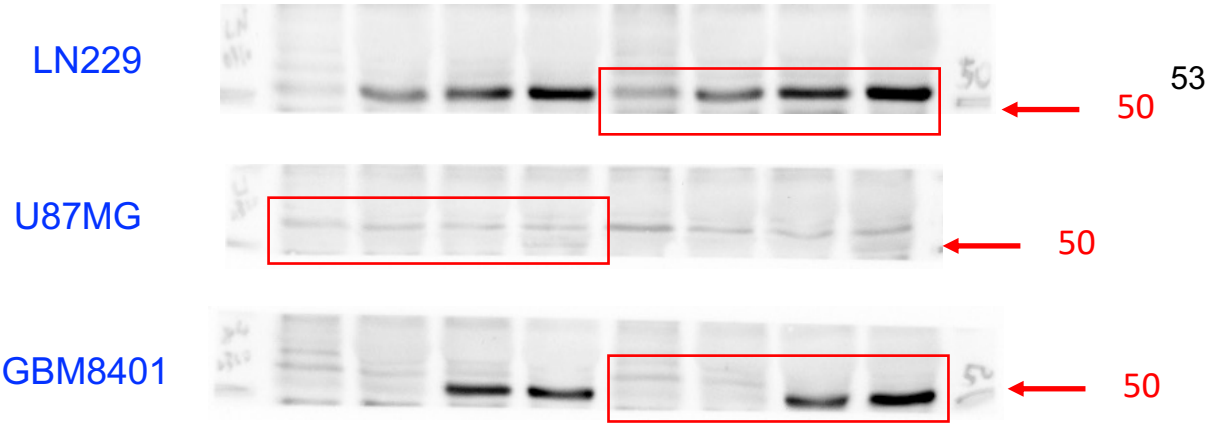
Marker MW  
Predict MW

Fig 4A

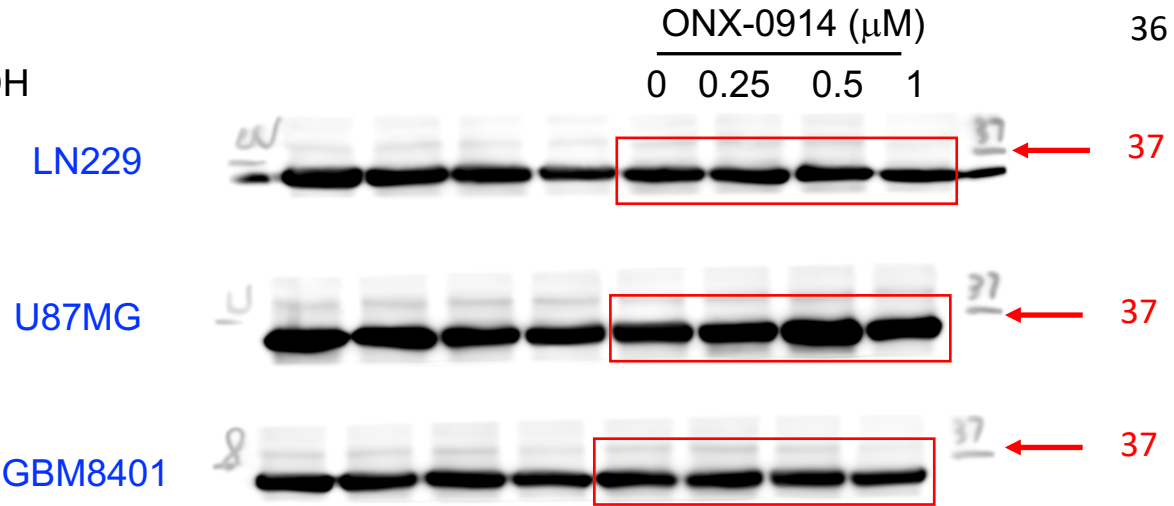
p-p53



p53



GAPDH



Marker MW  
Predict MW

Figure 1: Western blot analysis of p53 and p21 expression. The figure consists of three horizontal panels. The top panel shows p53 expression, with a red box highlighting lanes 1-4 and a red arrow pointing to lane 5. The middle panel shows p21 expression, with a red box highlighting lanes 5-8 and a red arrow pointing to lane 4. The bottom panel shows p53 expression, with a red box highlighting lanes 1-4 and a red arrow pointing to lane 5. Molecular weight markers (50 kDa) are indicated on the right of each panel.

LN229

GBM8401

U87MG

Western blot analysis of p15 expression in LN229, GBM8401, and U87MG cell lines. The blots show p15 protein levels across four lanes for each cell line. A red box highlights the p15 band in the fourth lane, and a red arrow points to the band, labeled '15'.

Western blot analysis of p37 expression in LN229, GBM8401, and U87MG cell lines. The blots show bands corresponding to p37 (indicated by red arrows and the number 37 on the right). A red box highlights the first four lanes in each panel, which correspond to the four conditions described in the text: control, 100 ng/ml, 100 ng/ml + 100 ng/ml, and 100 ng/ml + 100 ng/ml + 100 ng/ml.