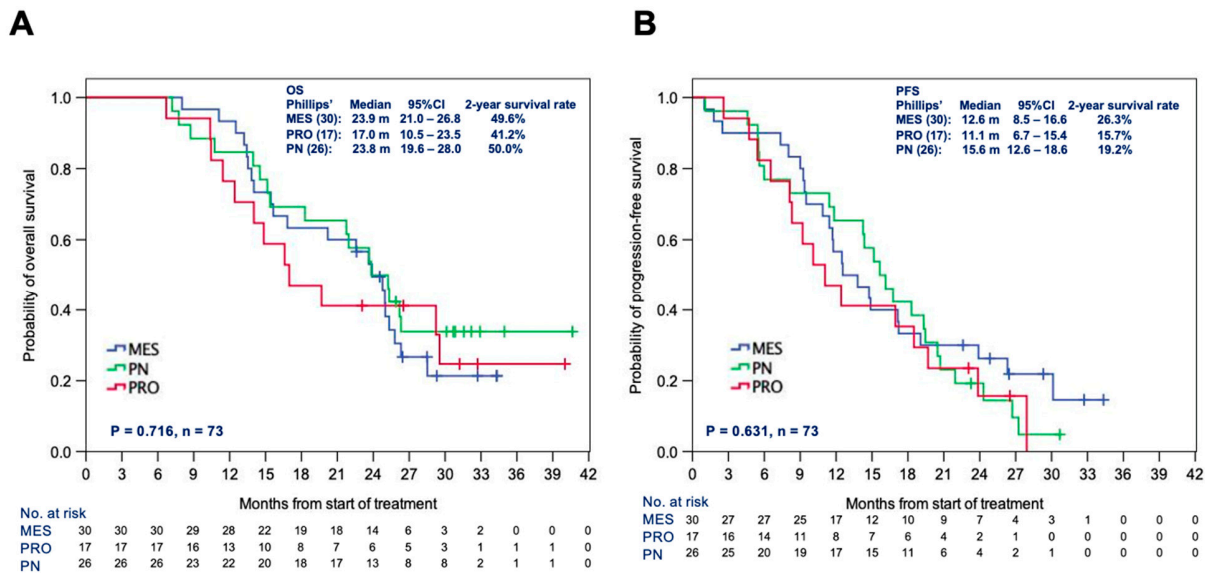


Figure S4



Overall survival (OS) (A) and progression-free survival (PFS) (B) stratified by Phillips et al.¹ subtypes: (MES) mesenchymal, (PRO) proliferative, and (PN) proneural. Median values with 95% confidence intervals (CIs) and 2-year survival rates are indicated for each subtype.

1. Phillips, Cancer Cell. 2006;9(3):157-73