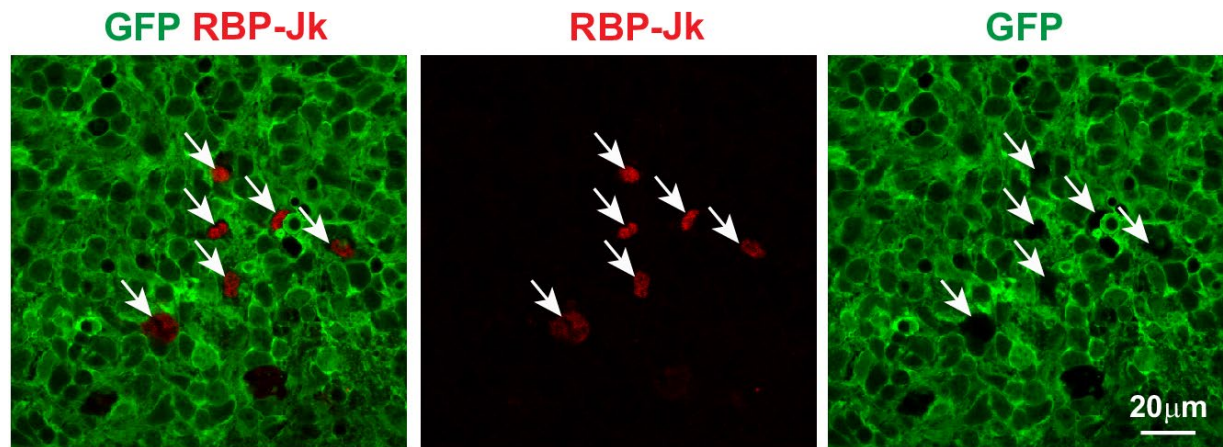
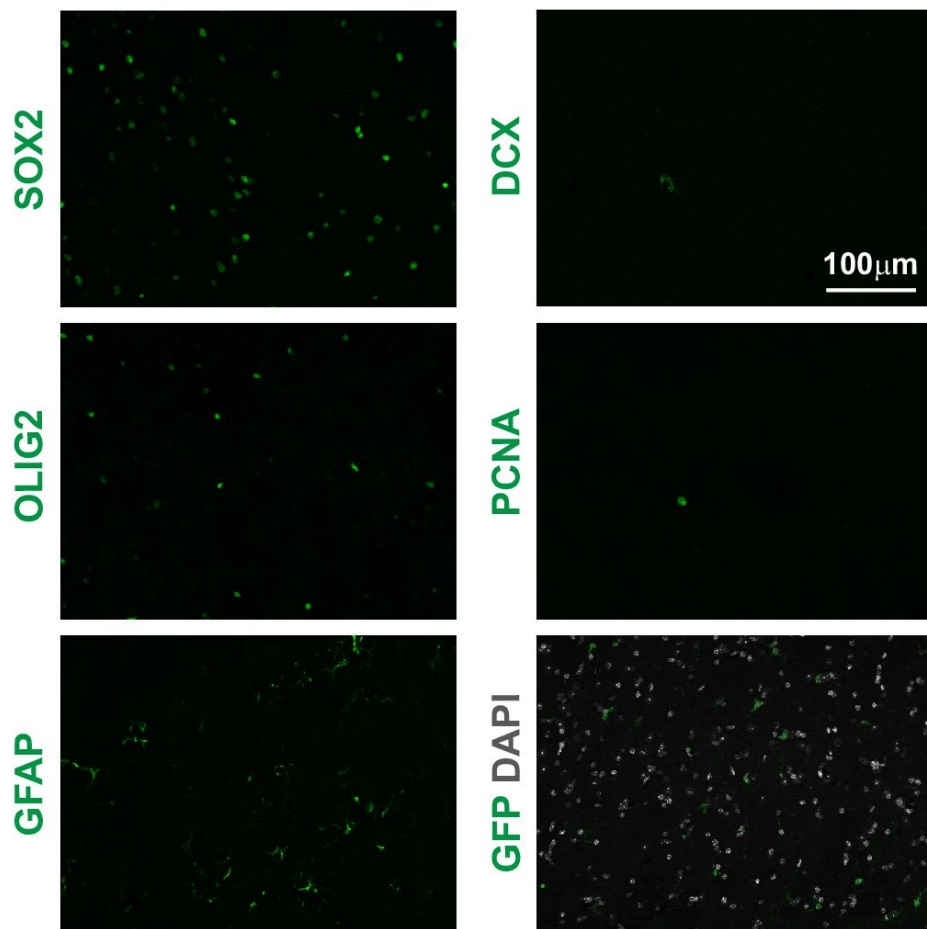


**A** $Trp53^{-/-} Rbpj^{-/-}$ **B**

Contralateral



**Figure S1.** Immunohistochemical analysis of  $Trp53^{-/-} Rbpj^{-/-}$  tumors and contralateral hemispheres. (A) Expression of RBP-Jk in a  $Trp53^{-/-} Rbpj^{-/-}$  tumor. Note that RBP-Jk<sup>+</sup> cells are GFP<sup>-</sup> (arrows), and GFP<sup>+</sup> tumor cells do not express RBP-Jk. (B) Expression of GFP, progenitor and glial markers (SOX2, OLIG2, GFAP), as well as staining for mitotically active cells (PCNA) and immature neurons (DCX) in the hemisphere contralateral to a  $Trp53^{-/-} Rbpj^{-/-}$  tumor.