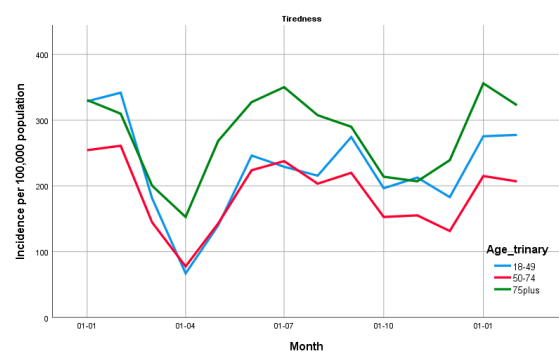
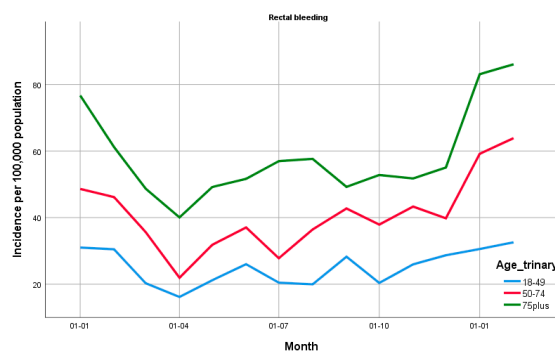
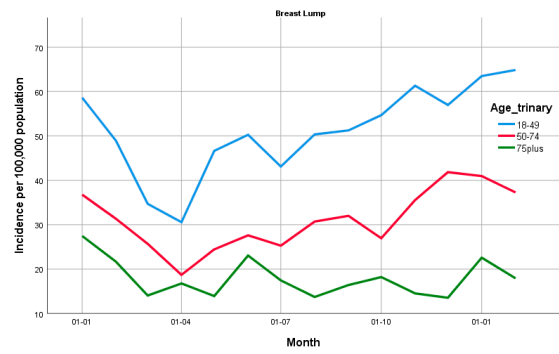
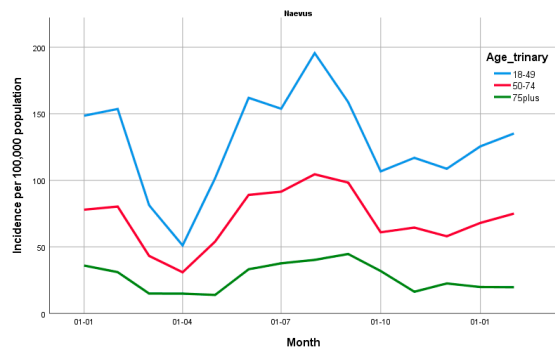


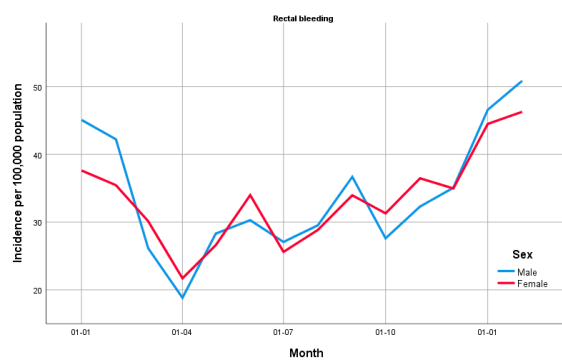
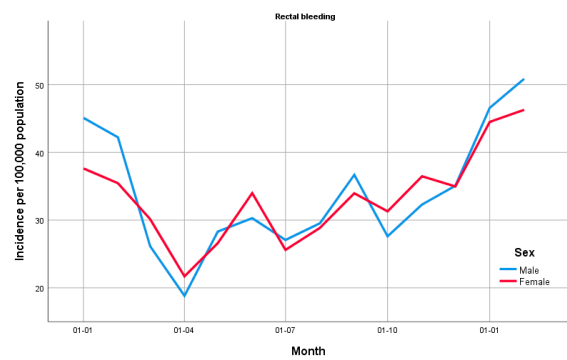
Supplementary files

Cancer-related symptoms	History of cancer	Cardiovascular Disease	Psychiatric / Psychological
- A04 – tiredness - B02 – lymphadenopathy - D13 – jaundice - D15 – melaena - D16 – rectal bleeding - D18 – change in bowel habits - D21 – swallowing problems - D24 – abdominal mass - S82 – naevus - T08 – weight loss - U06 – haematuria - X12 – postmenopausal bleeding - X19 – breast lump	- S77.03 – melanoma - X76 – breast cancer - D75 – colorectal cancer - R84 – lung cancer - A79 – cancer unknown primary - B74 – haematological cancer - D74 – stomach cancer - D76 – pancreatic cancer - D77 – Upper-gastrointestinal cancer - L71 – nervous system cancer - R85 – respiratory cancer - T71/73 – endocrine cancer - U75/76/77 – urinary cancer - Y77 – prostate cancer - Y78 – male genital cancer	- K71 – rheumatic heart disease - K74 – angina pectoris - K75 – myocardial infarction - K76 – ischaemic heart disease - K77 – heart failure - K83 – cardiac valve disease - K84 – other heart disease - K85/86/87 – hypertension - K89 – transient cerebral ischaemic - K90 – stroke - K91 – atherosclerosis - K92.01 – claudication - K93 – lung emboli - K94 – thrombophlebitis - K99 – cardiovascular disease other - W77.03 – deep vein thrombosis	- P01 - anxiety - P02 – acute stress reaction - P03 – depressed - P15 – chronic alcohol misuse - P19 – drug misuse - P29 – other psychiatric symptoms - P70 – dementia - P71 – organic psychosis - P72 – schizophrenia - P73 – affective psychosis - P74 – anxiety disorder - P76 – depression - P77 – suicide attempt - P78 - neurasthenia - P79 – phobia / compulsion - P80 – personality disorder - P85 – mental handicap - P98 – other psychosis
Diabetes	Chronic Obstructive Airways Disease (COPD)		
T90 – diabetes mellitus	- R95 - COPD		

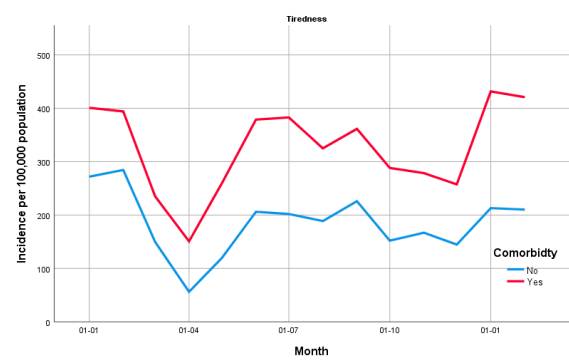
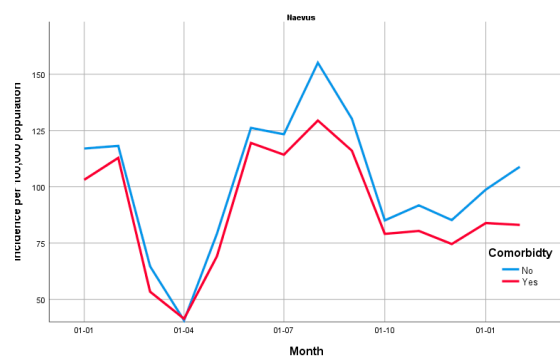
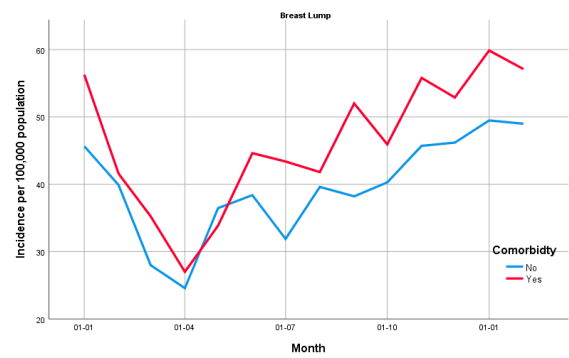
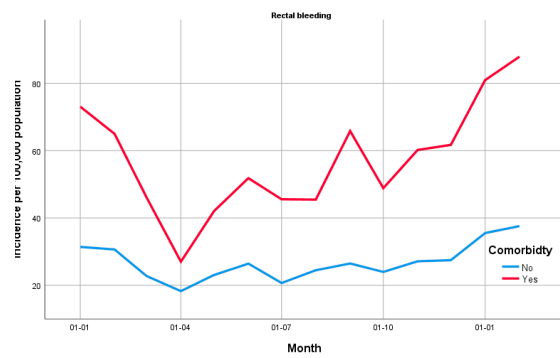
Supplementary Table S1: ICPC codes



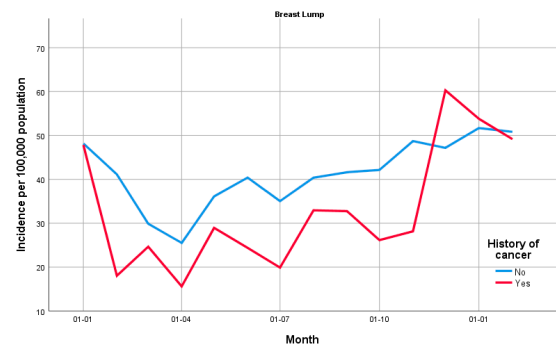
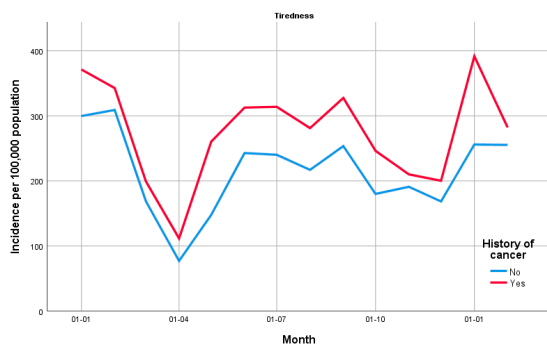
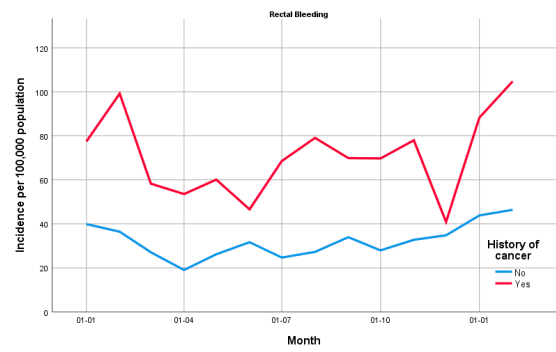
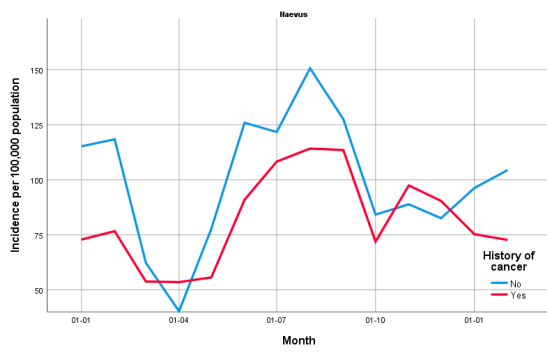
Supplementary Figure S1: Incidence according to age



Supplementary Figure S2: Incidence according to sex



Supplementary Figure S3: Incidence according to major comorbidity status (defined as cardiovascular, diabetes, or chronic obstructive airways disease, and psychiatric or psychological diagnosis at any timepoint, coded through ICPC codes described in supplementary file, Table S1).



Supplementary Figure S4: Incidence according to history of cancer