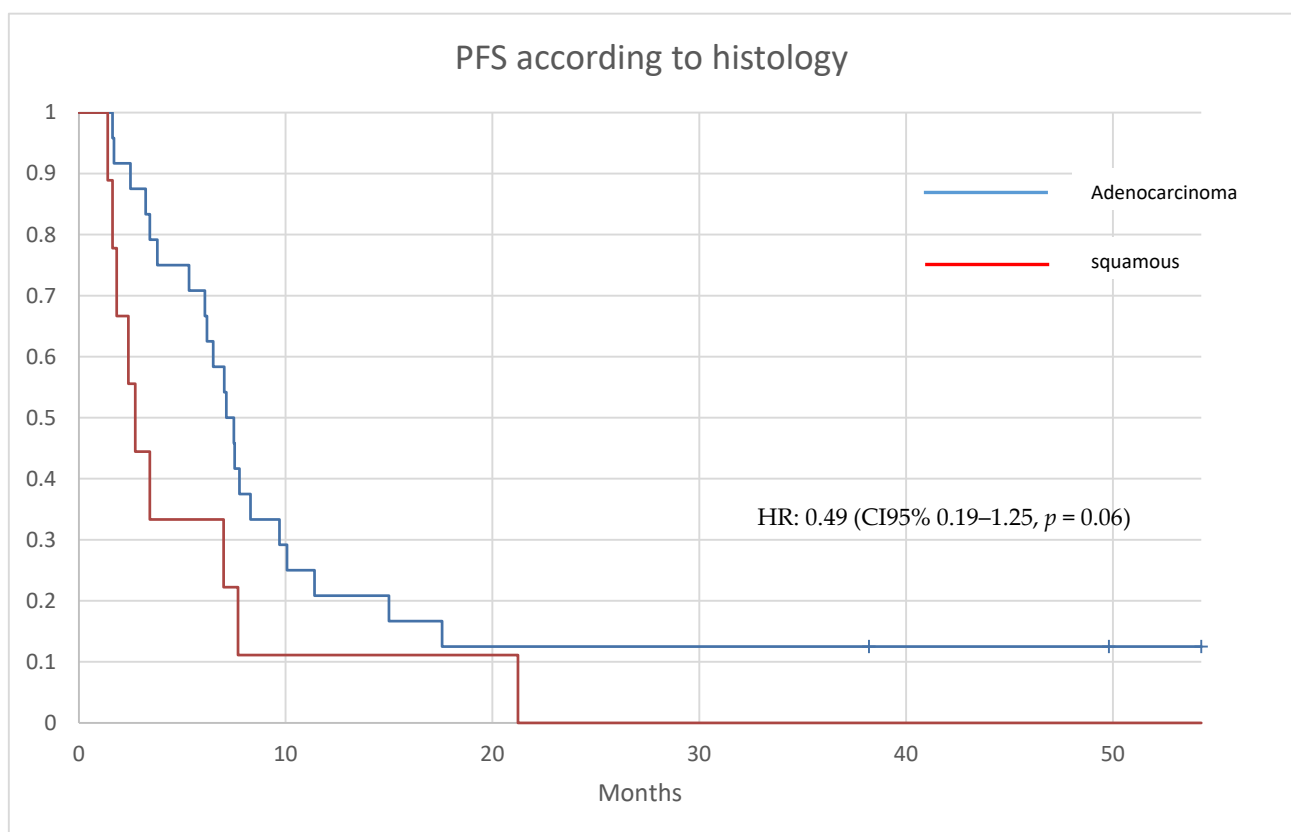


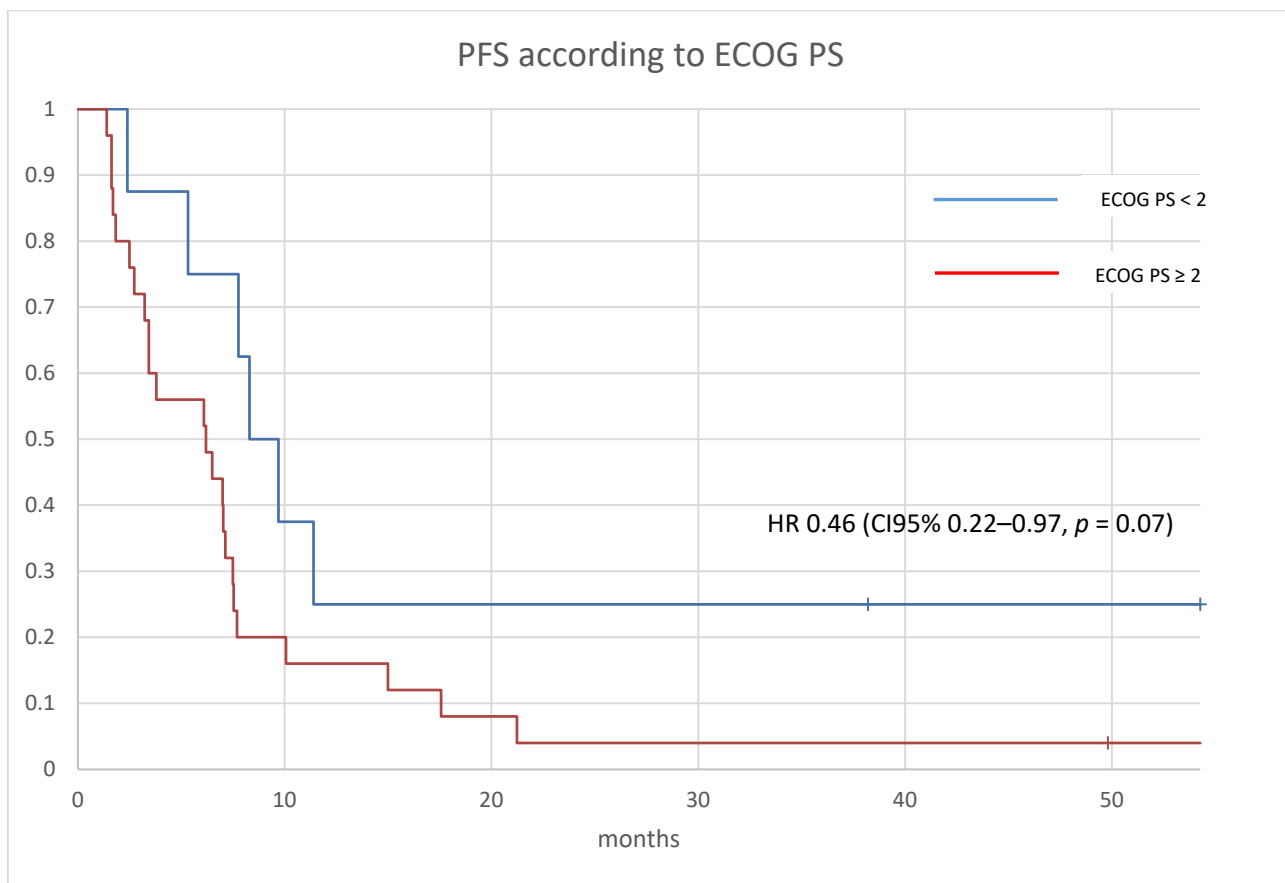
## Supplementary Materials

**Table S1.** Delta-radiomic features calculated with the Absolute difference method that resulted statistically different in the 3 response classes. The results are presented as median values for each class and p-values.

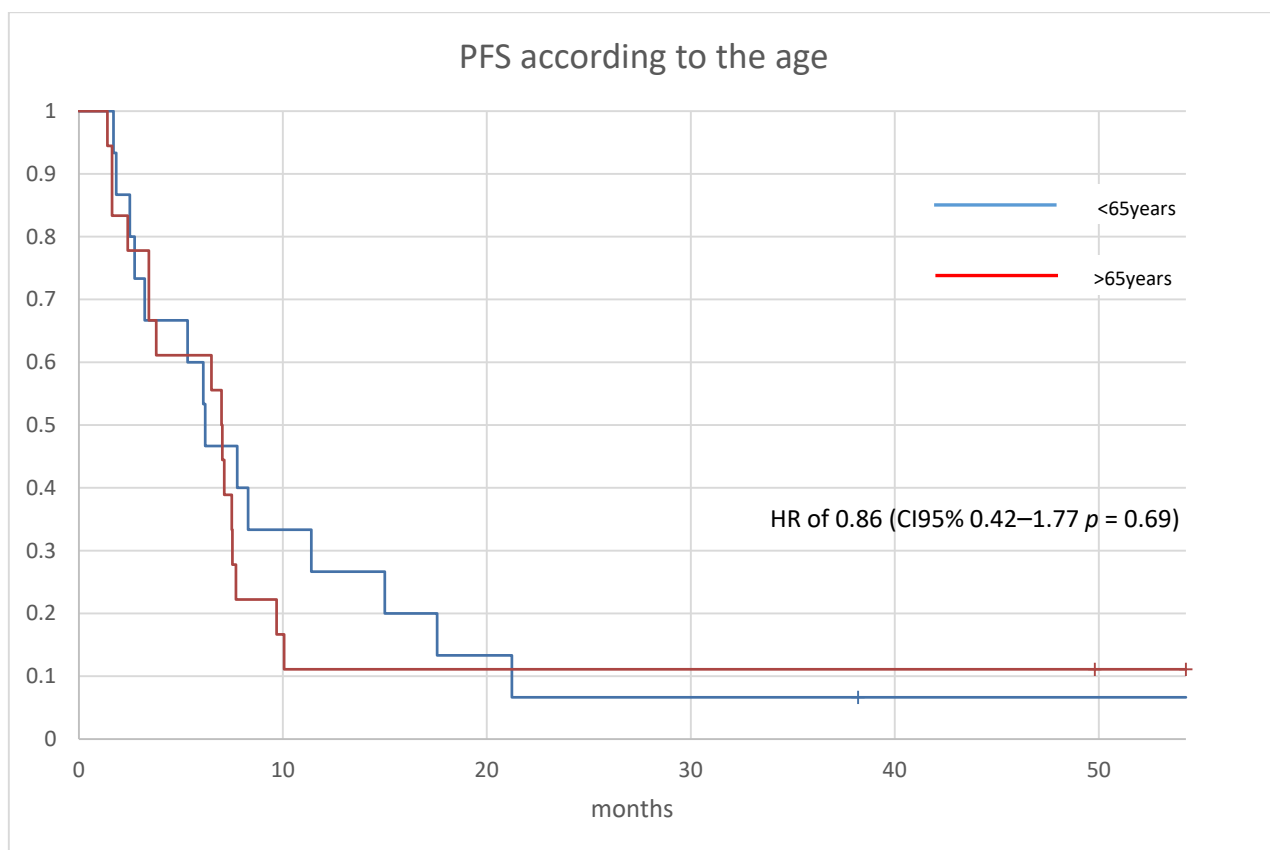
Absolute Difference					
Class	Name	PD	PR	SD	p-Value
firstorder	TotalEnergy	$-6,060 \times 10^9$	$1,046 \times 10^{11}$	$-1,200 \times 10^7$	0.0212
gldm	DependenceNonUniformity	-37,24	676,5	-39,31	0.0415
gldm	GrayLevelNonUniformity	-341,5	2328	-63,22	0.0277
glcm	Contrast	0,1798	-0,3042	0,2766	0.0326
glrlm	GrayLevelNonUniformity	-122,3	1175	-55,45	0.0387
glrlm	RunLengthNonUniformity	-509,3	3777	-250,3	0.0329
glszm	ZoneVariance	-3847	34668	-794,1	0.0237
glszm	LargeAreaEmphasis	-3835	34908	-846,4	0.0234
glszm	LargeAreaLowGrayLevelEmphasis	-72,54	159,0	-1,676	0.0165
glszm	LargeAreaHighGrayLevelEmphasis	-17371	$1,496 \times 10^7$	-59729	0,0276



**Figure S1.** Univariate analysis of progression free survival (PFS) according to histology.



**Figure S2.** univariate analysis of progression free survival according to the eastern cooperative oncology group (ECOG PS).



**Figure S3.** univariate analysis of progression free survival (PFS) according to the age.