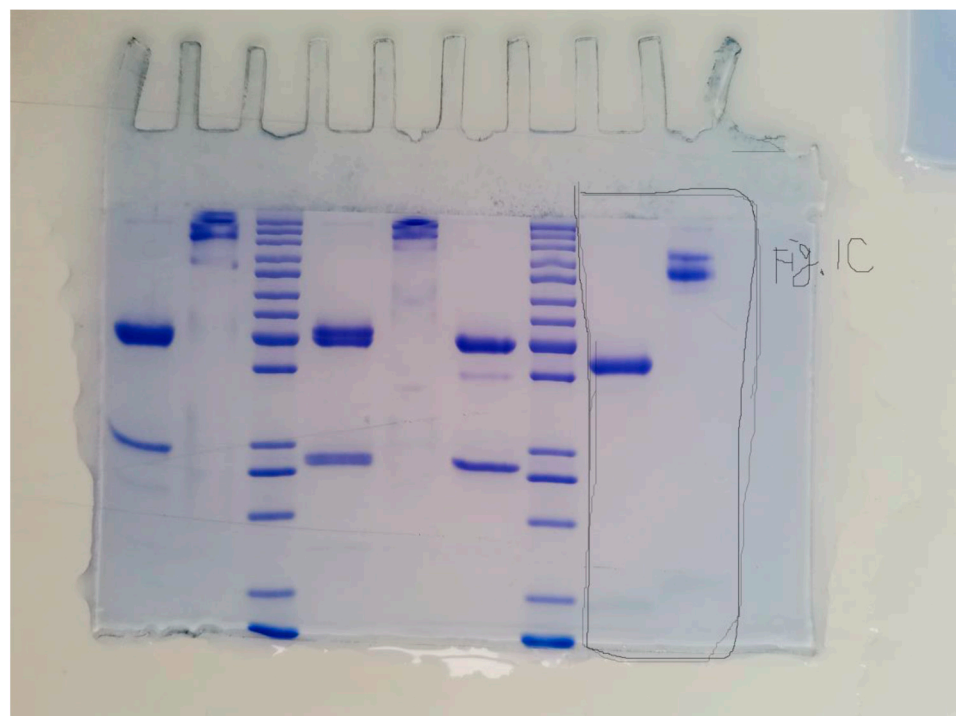
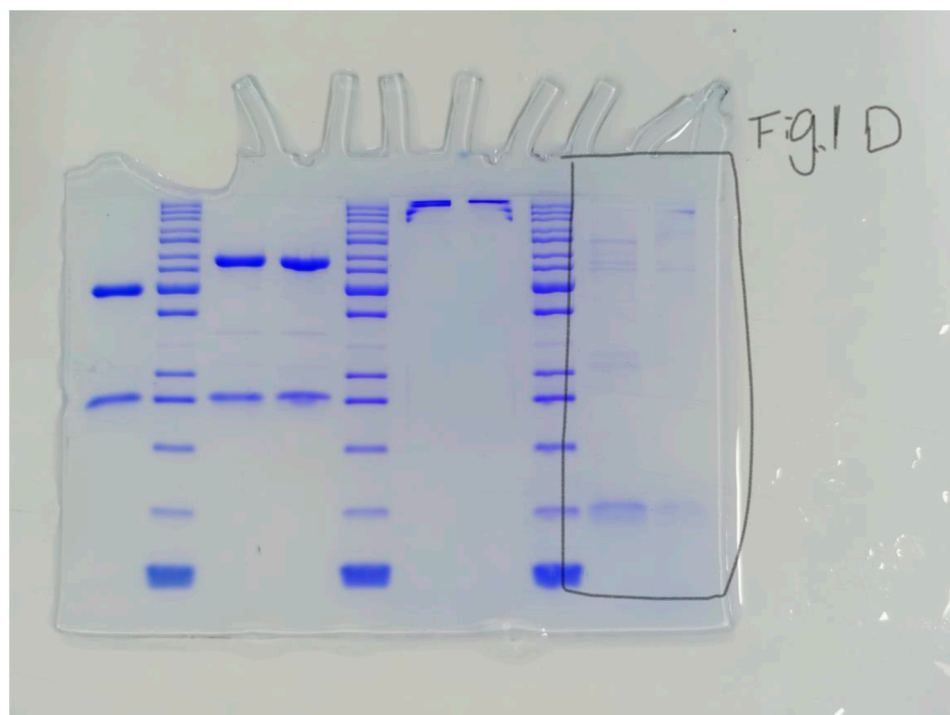


**Figure S1.** Representative flow gating for live cells and lymphocyte populations. (A) SSC-A vs. FSC-A gating for live cells. (B) CD3<sup>+</sup>, CD4<sup>+</sup> for CD4 T cells then gated for CD25<sup>+</sup>, FoxP3<sup>+</sup> Treg cells. (C) CD3<sup>+</sup>, CD8<sup>+</sup> for CD8 T cells (D) CD3<sup>+</sup>, NK1.1<sup>+</sup> for NK cells.



**Figure S2.** Original Western Blot for Figure 1C.



**Figure S3.** Original Western Blot for Figure 1D.

**Table S1.** Percentages of different cell types in spleens and P values.

		No.1	No.2	No.3	No.4	No.5	No.6	P value
Tregs (% live cells)	PBS	3.58	1.98	2.89	3.03	1.13	2.57	$\left. \begin{array}{l} < 0.0001 \\ < 0.0001 \end{array} \right\} < 0.001$
	IL-2WT	15.3	10.28	14.78	14.2	16.78	18.22	
	IL-2K35C-moFA	6.87	3.57	4.77	6.24	4.85	5.58	
NK(% live cells)	PBS	2.82	3.35	2.14	5.01	4.4	2.28	$\left. \begin{array}{l} < 0.0001 \\ = 0.2258 \end{array} \right\} < 0.0001$
	IL-2WT	18.26	19.38	14.26	18.4	17.81	20.75	
	IL-2K35C-moFA	23.21	17.64	19.21	18.64	18.26	21.62	
CD8 <sup>+</sup> T(% live cells)	PBS	14.71	6.17	8.8	10.27	12.04	7.8	$\left. \begin{array}{l} < 0.0001 \\ = 0.2476 \end{array} \right\} < 0.0001$
	IL-2WT	48.54	62.61	37.55	54.42	53.62	60.12	
	IL-2K35C-moFA	58.21	37.47	40.58	49.69	58.33	24.76	