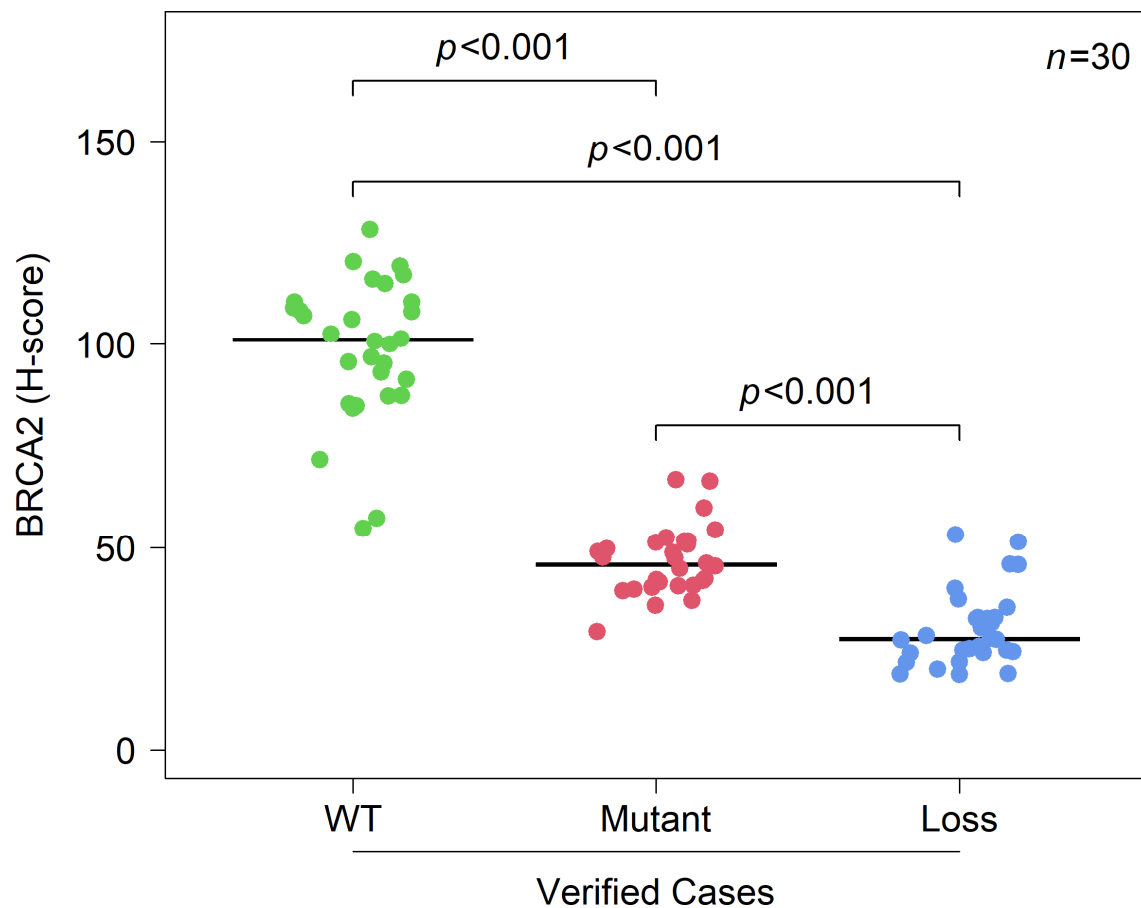
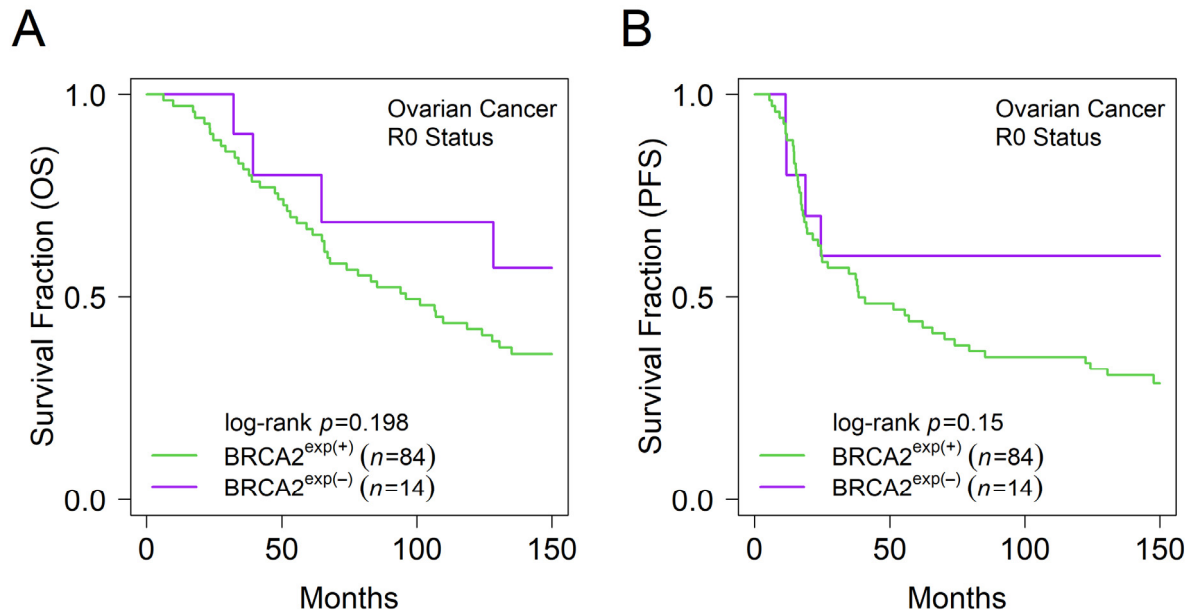


# Combined BRCA2 and MAGEC3 expression predict outcome in Advanced Ovarian Cancers

## Supplementary Figures



**Figure S1.** BRCA2 N-terminal expression in the sequenced ovarian tumor cases. A statistically significant difference observed between in the N-terminal expression of BRCA2 wild type, BRCA2 mutant, and BRCA2 loss in sequenced ovarian tumor cases when compared to each other.



**Figure S2.** Kaplan–Meier survival curves for independent evaluation of the relationship between BRCA2 expression and patient outcomes in the larger cohort of patients with unsequenced advanced ovarian cancer cases. **(A)** Kaplan–Meier plot showing no improvement in overall survival trends for advanced ovarian cancer patients stratified by BRCA2 expression levels. **(B)** Kaplan–Meier plot showing no improvement in progression-free survival trends for advanced ovarian cancer patients stratified by BRCA2 expression levels.