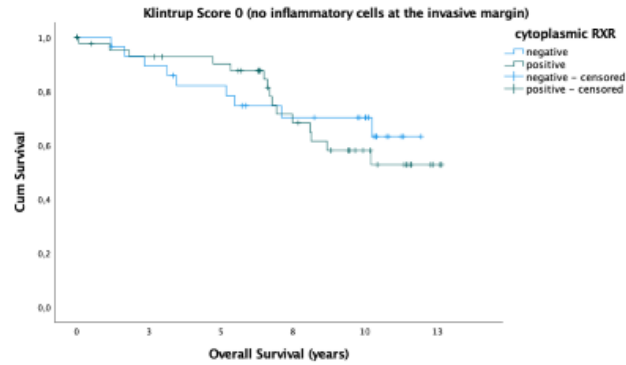
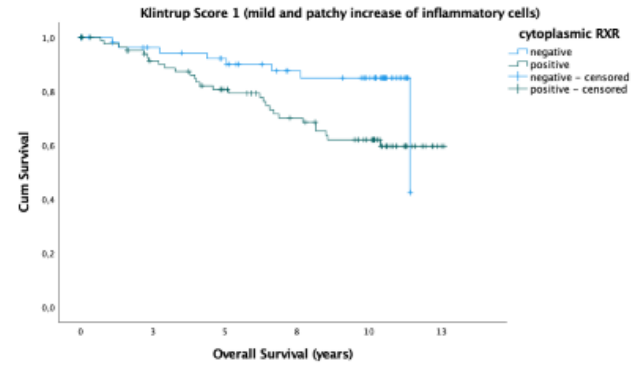


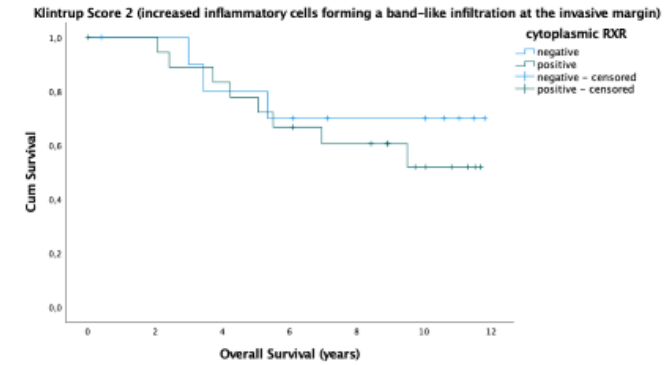
**Supp. Figure S1:** Kaplan-Meier survival analyses for cytoplasmic RXR $\alpha$  in relation to the level of peritumoral inflammation on overall survival (OS).



p = 0.681

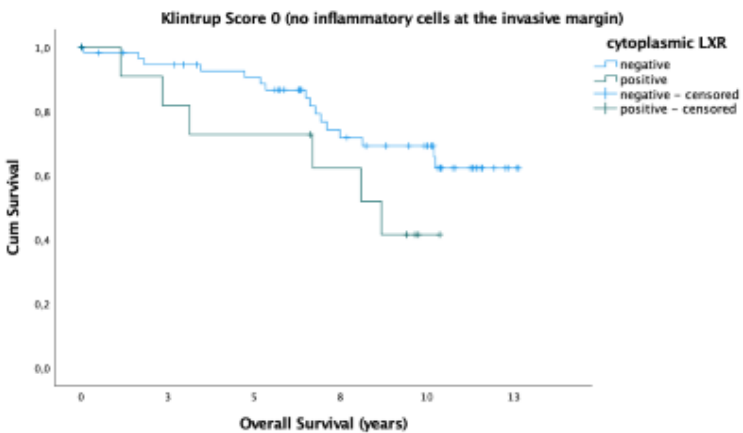


p = 0.021

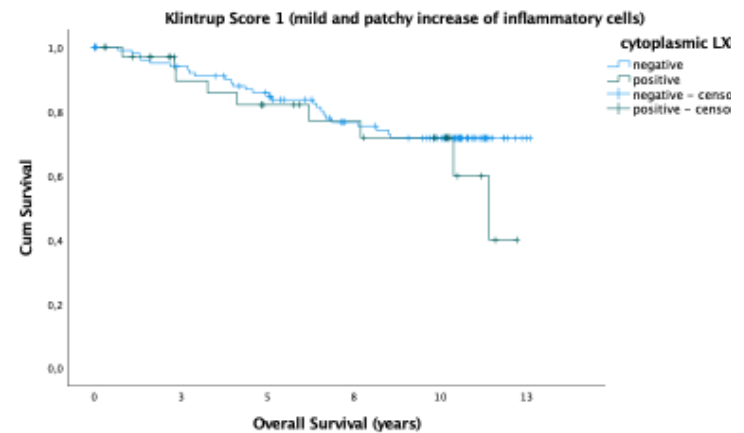


p = 0.401

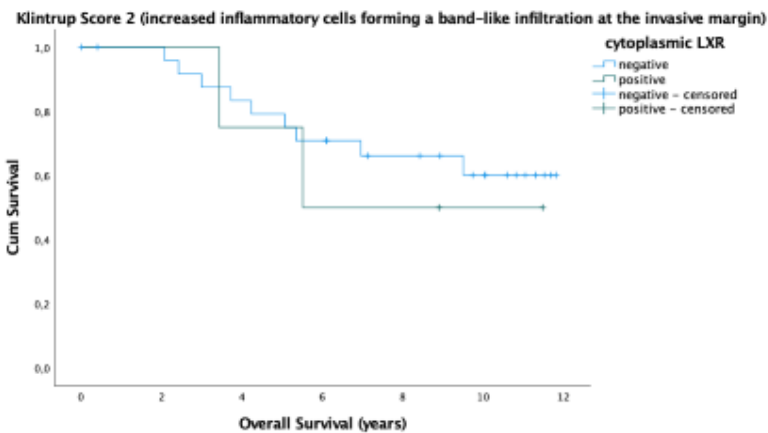
**Supp. Figure S2:** Kaplan-Meier survival analyses for cytoplasmic LXR in relation to the level of peritumoral inflammation on overall survival (OS).



$p = 0.112$

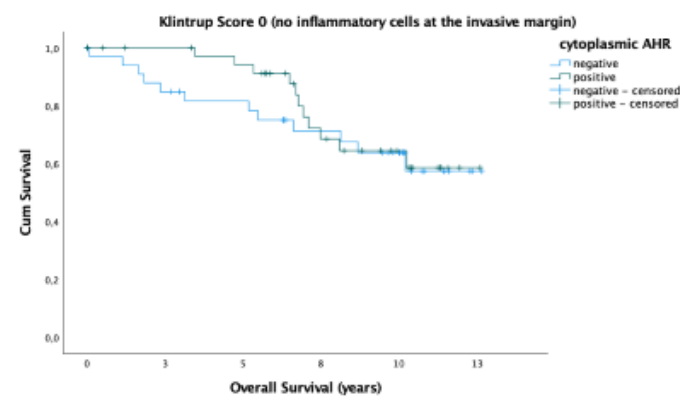


$p = 0.434$

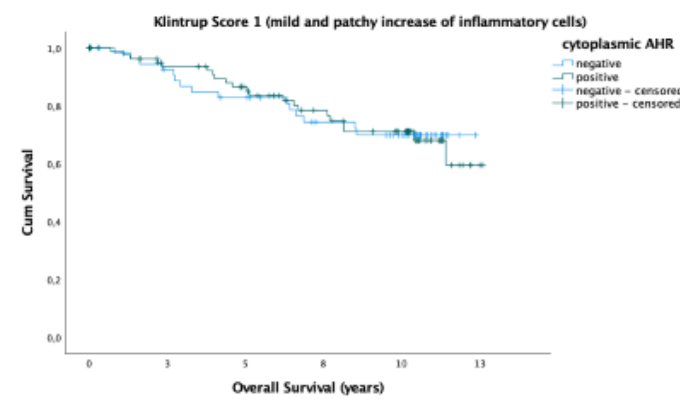


$p = 0.653$

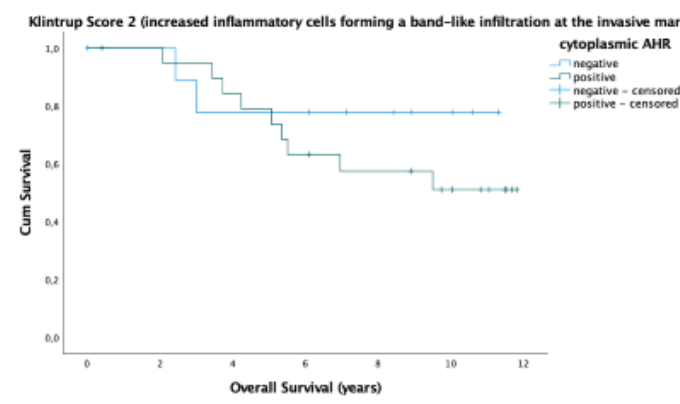
**Supp. Figure S3:** Kaplan-Meier survival analyses for cytoplasmic AHR in relation to the level of peritumoral inflammation on overall survival (OS).



$p = 0.595$



$p = 0.961$



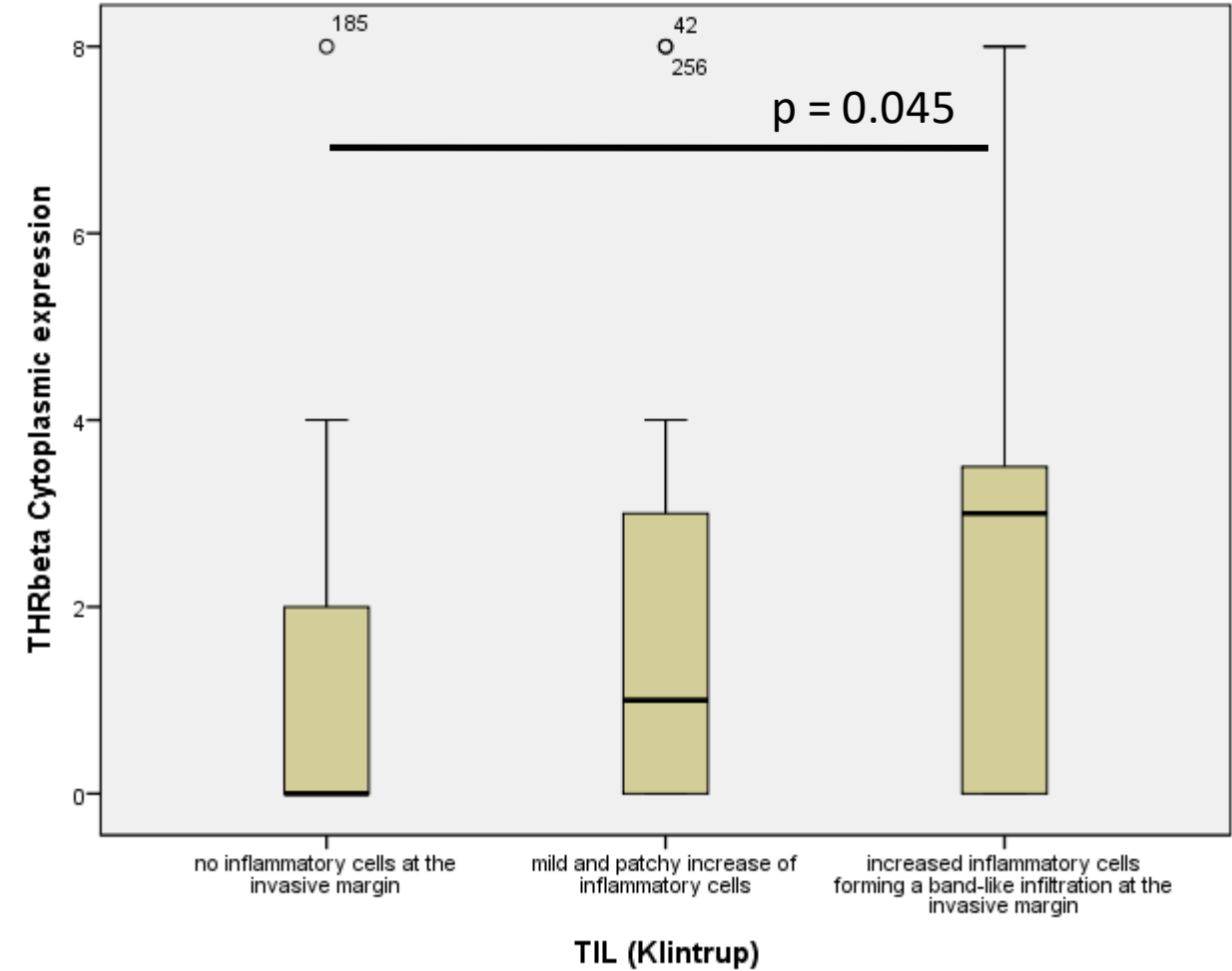
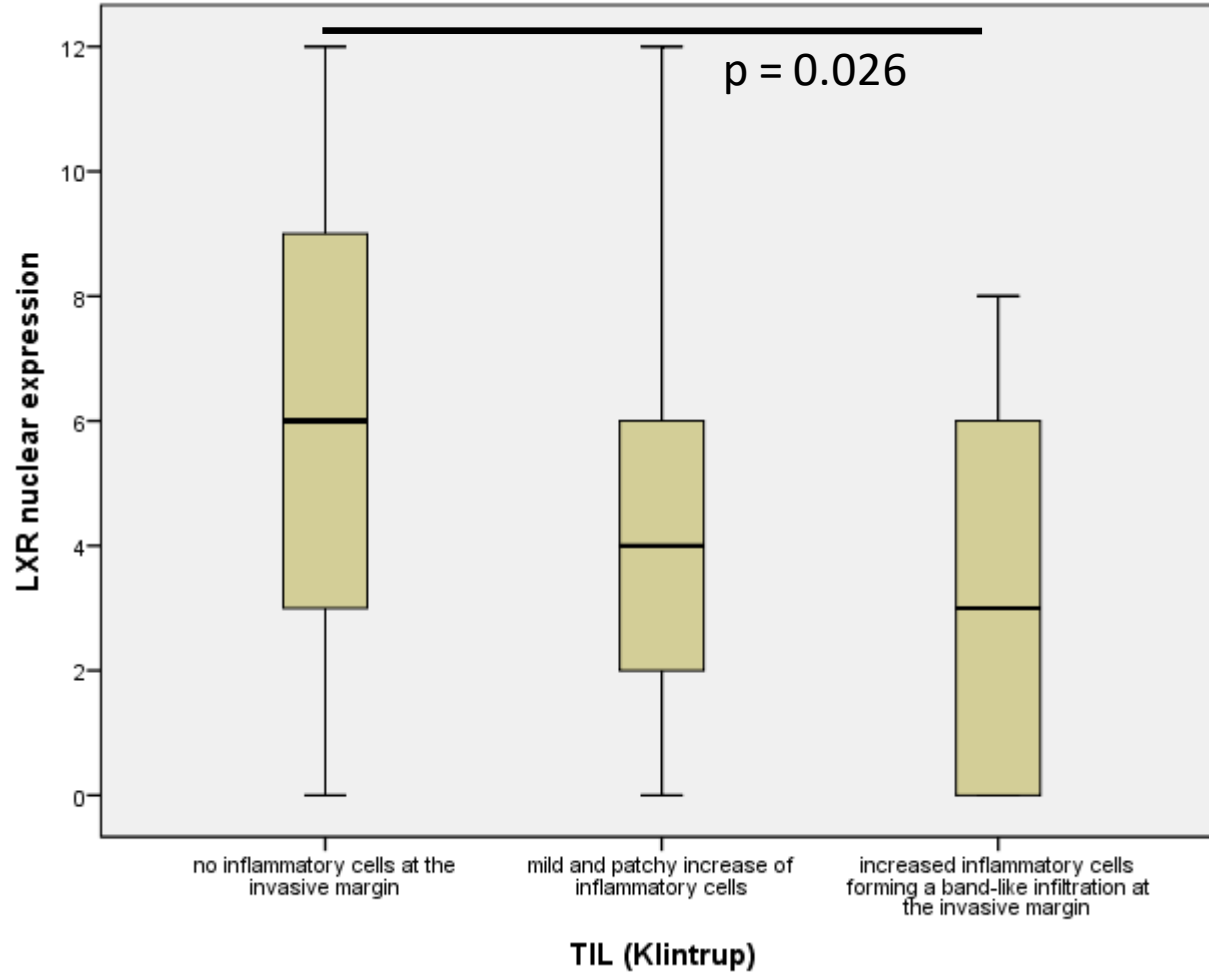
$p = 0.347$

**Supp. Table S1**  
Clinical and pathological  
characteristics of all patients

Clinical and Pathological Characteristics	n = 264
Age, median (years)	57.54
Molecular subtype (IHC)	
Luminal A (Ki67 ≤ 14%)	140
Luminal B (Ki67 > 14%)	54
HER2 positive	19
HER2 non luminal	7
Triple negative	34
Unknown	10
Grade	
I	11
II	92
III	42
Unknown	119
Tumor size	
pT1	164
pT2	78
pT3	3
pT4	10
Unknown	9
Lymph node metastasis	
Yes	112
No	138
Unknown	14
ER status	
Positive	204
Negative	51
Unknown	9
PR status	
Positive	145
Negative	110
Unknown	9

**Supp. Table S2:** Correlation between Salgado and Klintrup Score

		Salgado			
		<10%	>10 and <30%	>30%	Total
Klintrup	0	60	14	0	74
	1	22	98	23	143
	2	0	0	30	30
Total		82	112	53	247



**Supp. Figure S4:** Expression of LXR in the nucleus is significantly decreased from cases with no peritumoral infiltration of immune cells to cases with increased numbers of infiltrating immune cells. In addition, expression of cytoplasmic expressed thyroid hormone receptor beta increases from cases with no immune cell infiltration to cases with increased infiltration of inflammatory cells.