

Figure S1-S3 Related immunohistochemical and correlation analysis results

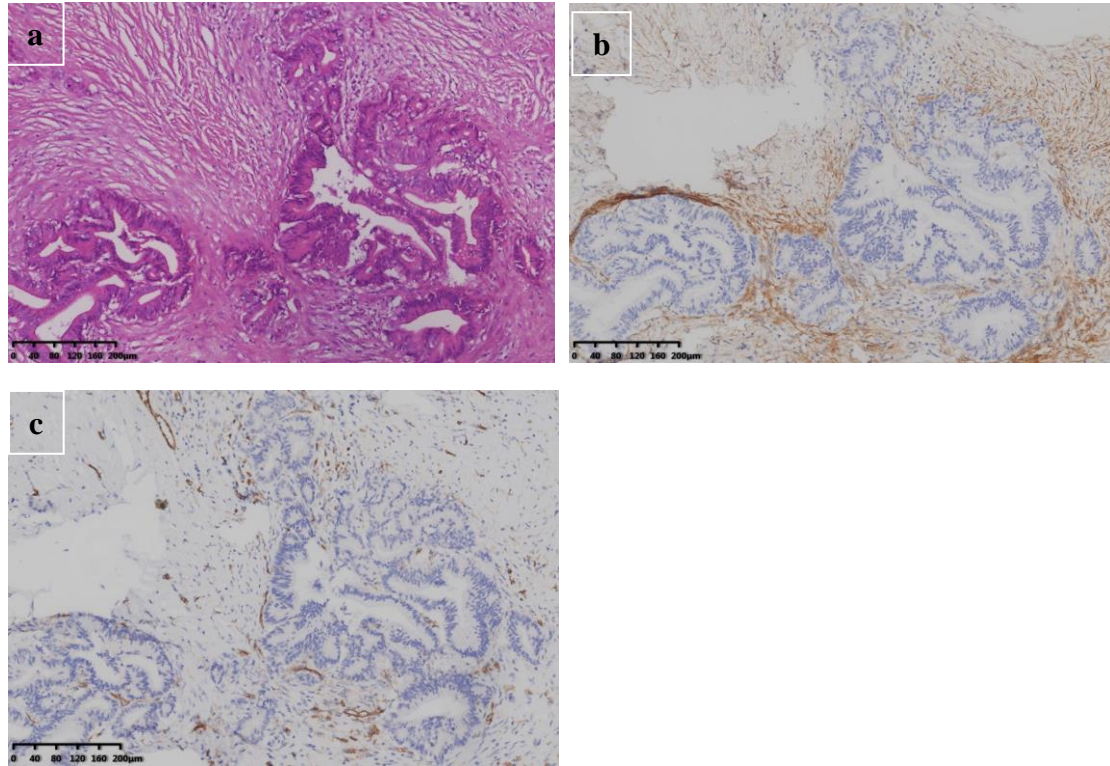


Figure S1. HE staining of one PDAC case (a,HE,x10). Immunohistochemical staining of anti-collagen type I showed that the collagen content is not abundant(b,collagen,x10) and fewer capillaries(c,CD31,x10)in the tumor microenvironment.

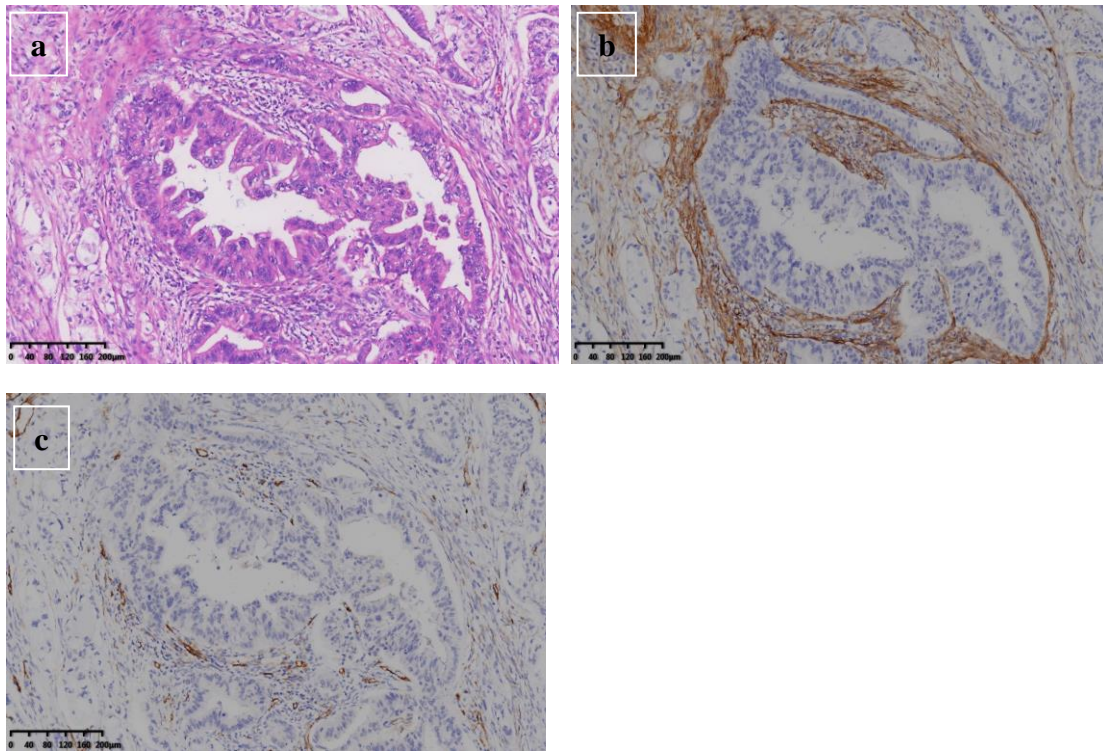


Figure S2. HE staining of one PDAC case. (a, HE, x10). Immunohistochemical staining showed that the collagen content was abundant (b, collagen, x10) and more capillaries (c, CD31, x10) in the tumor microenvironment.

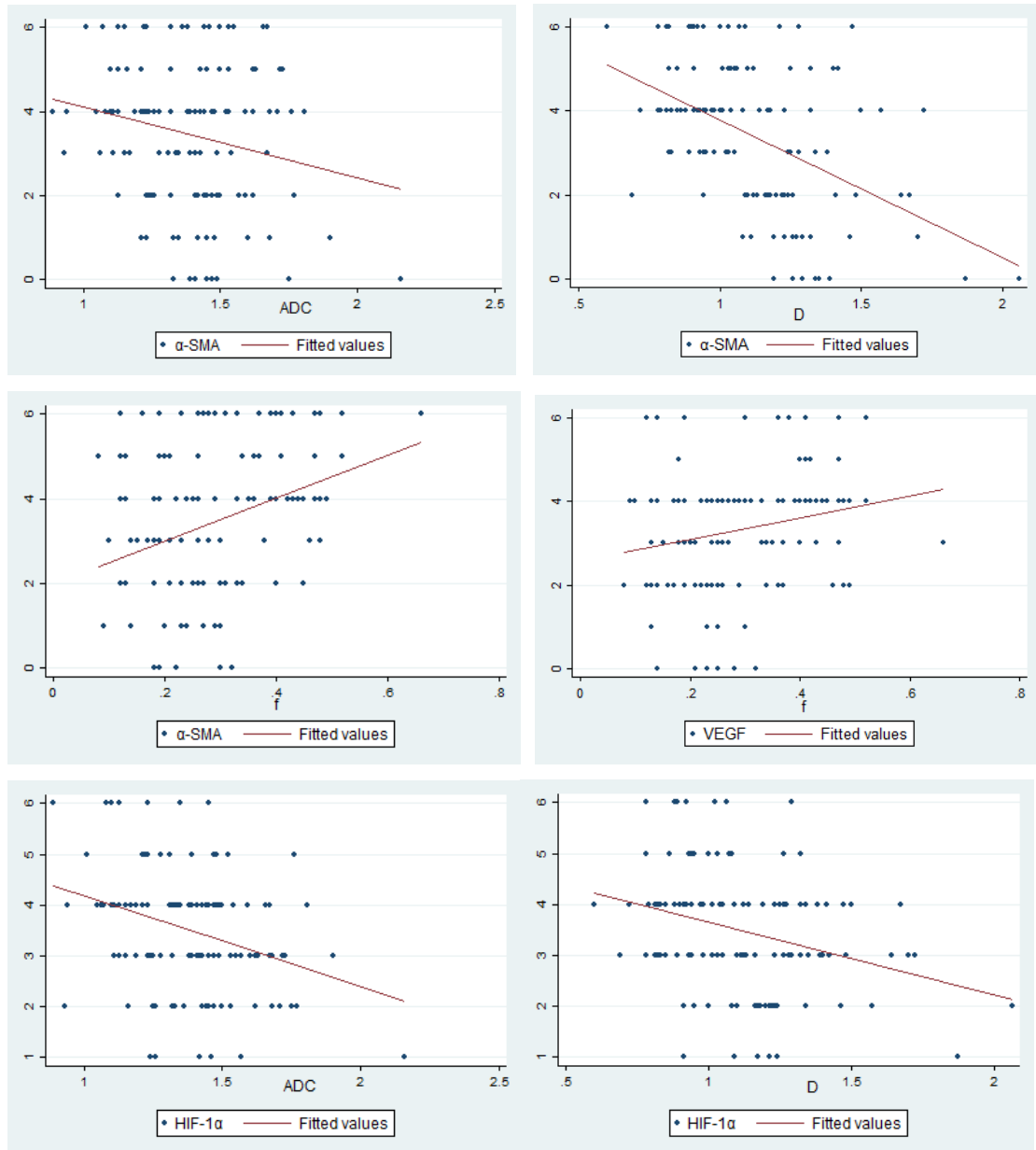


Figure S3. The Pearson correlation analysis between quantitative MRI parameters and the histopathology of PDAC.