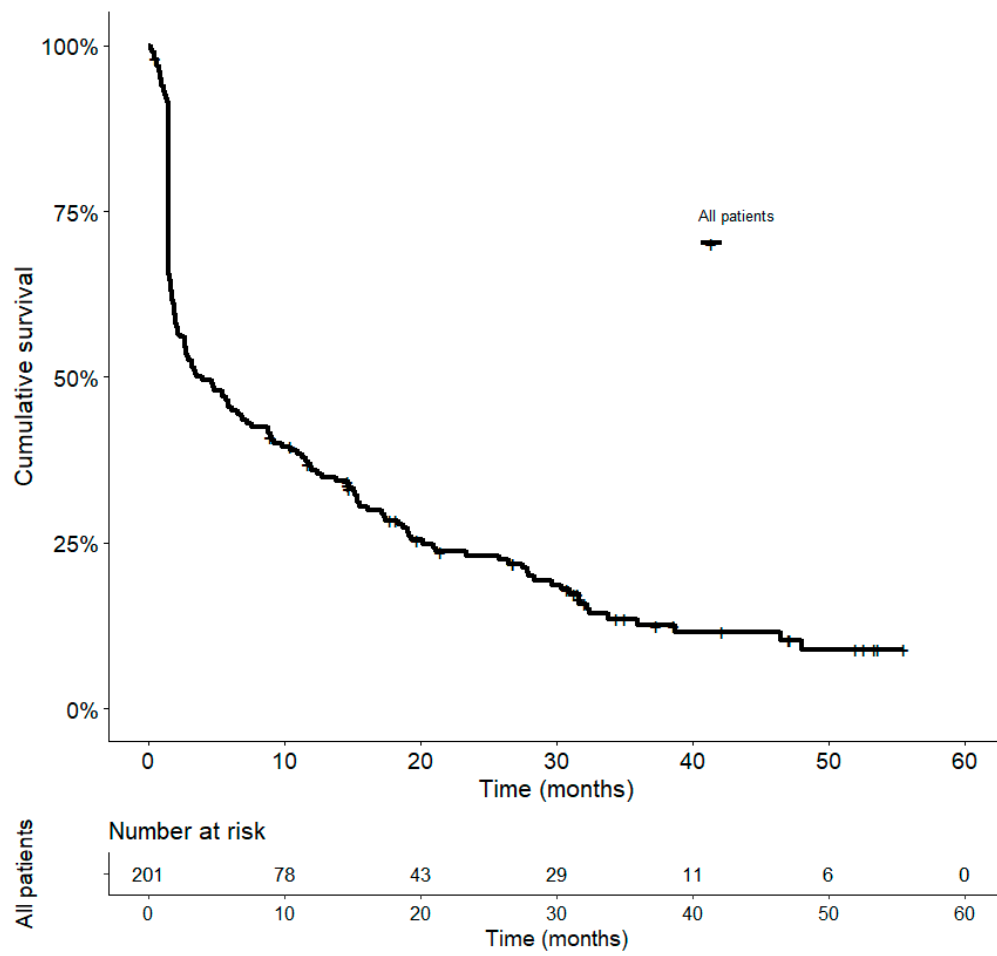
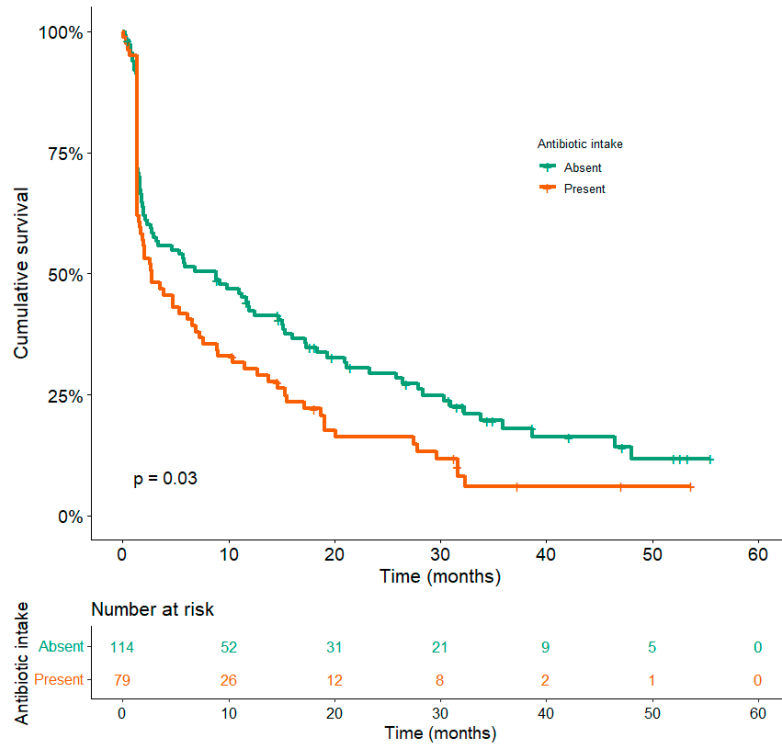


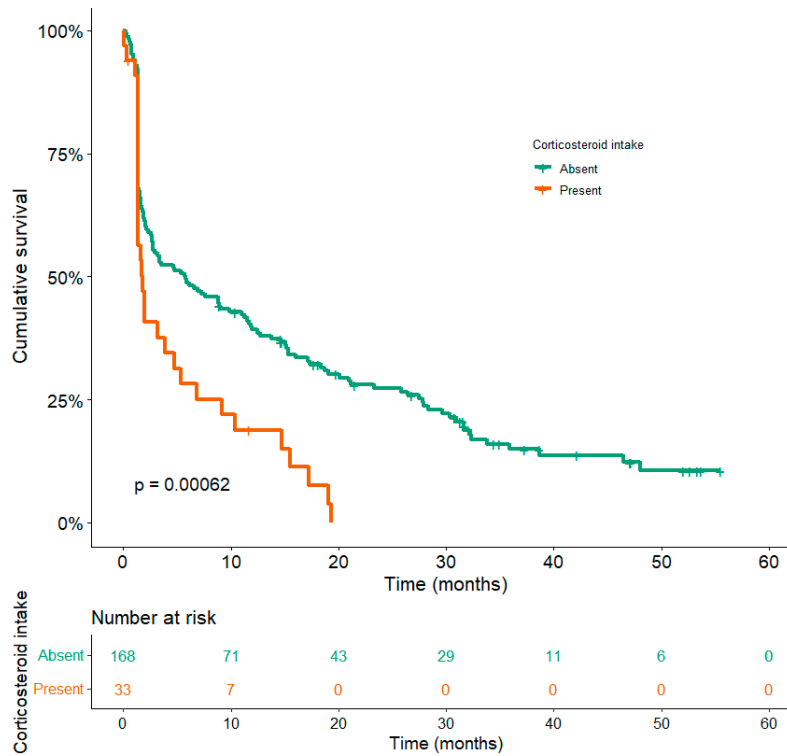
Supplementary Figure S1: TTNT in the entire population

Supplementary Figure S2: TTNT according to treatment with antibiotics (A), corticosteroids (B), and LIPI score (C).

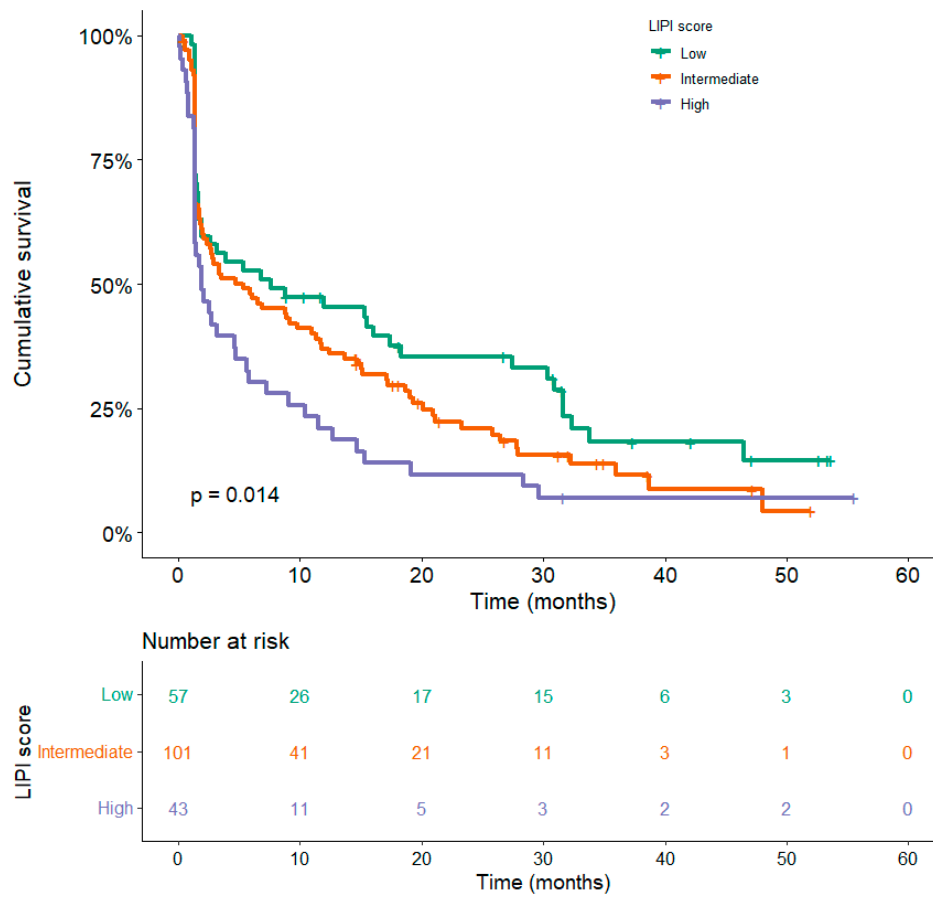
Suppl. Fig. S2A:



Suppl. Fig. S2B:



Suppl. Fig. S2C:



Supplementary Table S1 - Comparison of patients with Grade 3-4 immune-related adverse events with patients without Grade 3-4 irAEs

Variables	N	All patients (% of all patients)	N	Grade 3-4 irAEs		p
				No (% of patients in each variable)	Yes (% of patients in each variable)	
Age at ICI initiation (years) Mean (SD) Median (IQR)	201	63.3 (10.4) 64 (57 - 71)	201	62.9 (SD: 10.7) 63 (IQR: 56-70.5)	64.9 (SD: 9.4) 66.5 (IQR: 61-72)	0.24
Gender Male Female	201	130 (65) 69 (35)	201	110 (84.5.) 55 (80)	22 (17) 14 (20.5)	0.57
Healthcare center Bichat – Claude Bernard AP-HP S^t Joseph Foundation Hospital	201	162 (80.5) 39 (19.5)	201	131 (81) 34 (87)	31 (19.5) 5 (13)	0.37
Smoking status Never-smokers Former smokers Smokers	201	11 (5) 90 (45) 100 (50)	201	8 (73.0) 74 (82) 83 (83)	3 (27.5) 16 (18) 17 (17)	0.65
Histology Squamous cell carcinoma Non-squamous cell carcinoma	201	55 (27.5) 146 (72.5)	201	48 (87.5) 117 (80)	7 (13) 29 (20)	0.30
Performance status 0 1 2 3	201	27 (13.5) 94 (47) 69 (34) 11 (5.5)	199**	21 (78) 76 (81) 57 (82.5) 11 (100)	6 (22) 18 (19.5) 12 (17.5) 0 (0)	0.45
Metastatic sites count < 3 ≥ 3	201	102 (51.0) 99 (49.0)	199**	83 (81.5) 82 (83)	19 (19) 17 (17.5)	0.85
Brain metastasis No Yes	201	136 (68.0) 65 (32.0)	199**	108 (79.5) 57 (88)	28 (21) 8 (12.5)	0.17
Liver metastasis No Yes	201	168 (84.0) 33 (16.0)	199**	134 (80) 31 (94)	34 (20.5) 2 (6)	0.08

Disease stage at ICI initiation						
Non metastatic	201	25 (12.5)	199**	19 (76)	6 (24)	0.41
Metastatic		176 (87.5)		146 (83)	30 (17)	
History of CRD						
No	192	131 (68.0)	191 [#]	107 (82)	24 (18.5)	1.00
Yes		61 (32.0)		50 (82)	11 (18.5)	
History of CVD						
No	195	94 (48.2)	194 ^{##}	82 (87)	12 (13)	0.06
Yes		101 (51.8)		77 (76)	24 (24)	
PPI intake*						
No	182	109 (59.9)	181 [‡]	94 (86)	15 (14)	0.034
Yes		73 (40.1)		53 (72.5)	20 (27.5)	
Corticosteroids intake*						
No	201	168 (83.6)	199**	136 (81)	32 (19)	0.46
Yes		33 (16.4)		29 (88)	4 (12.5)	
Antibiotics intake*						
No	193	114 (59.1)	192 ^{††}	93 (81.5)	21 (18.5)	1.00
Yes		79 (40.9)		64 (81)	15 (19)	
ICI sequence						
First-line	201	61 (30.3)	199**	49 (80.5)	12 (20)	0.84
Following chemotherapy		140 (69.7)		116 (83)	24 (17.5)	
ICI type						
Nivolumab	201	138 (68.7)	199**	116 (84)	22 (16)	0.023
Pembrolizumab		51 (25.4)		43 (84.5)	8 (16)	
Nivolumab + Ipilimumab		12 (6.0)		6 (50)	6 (50)	
PD-L1 TPS						
<1 %		33 (20.9)		31 (94)	2 (6)	0.11
1-49 %	158	37 (23.4)	156 ^{†††}	30 (81)	7 (20)	
≥50 %		88 (55.7)		68 (77.5)	20 (23)	

SD, standard deviation; IQR, interquartile range; irAEs, immune-related adverse events; ICI, immune checkpoint inhibitor; CRD, chronic respiratory disease; CVD, cardiovascular disease; PPI, proton pump inhibitor; TPS, tumor proportion score.

* during the month preceding and/or the three first months following the initiation of ICI treatment.

** missing data in 2 patients; [#] missing data in 10 patients; ^{##} missing data in 7 patients; [‡] missing data in 20 patients

^{††}missing data in 9 patients; ^{†††}missing data in 45 patients

Supplementary Table S2 – Univariable (~~Kaplan-Meier~~) and multivariable analyses
(Cox proportional hazards) for time to new treatment (TTNT)

Variables	N (events)	Univariable analysis			Multivariable analysis		
		HR	95% CI	P value	aHR	95% CI	P value
Age at ICI initiation (years)	201 (169)						
> 65	91 (75)	-		0.286			
≤ 65	110 (94)	1.2	0.9-1.6				
Gender	201 (169)						
Female	69 (51)	-		0.018	1.5	1.1-2.1	0.020
Male	132 (118)	1.5	1.1-2.1				
PS at ICI initiation	201 (169)						
0-1	121 (94)	-		<0.0001	1.5	1.1-2.1	0.010
≥ 2	80 (75)	1.9	1.4-2.6				
Antibiotic intake*	193 (161)						
No	114 (90)	-		0.039	1.4	1.0-1.9	0.062
Yes	79 (71)	1.4	1.0-1.9				
Corticosteroid intake*	201 (169)						
No	168 (138)	-		0.002	1.6	1.0-2.4	0.034
Yes	33 (31)	1.9	1.3-2.8				
Histological type	201 (169)						
Squamous	55 (49)	-		0.597			
Non-squamous	146 (120)	0.9	0.7-1.3				
Number of metastatic sites	201 (169)						
< 3	102 (78)	-		<0.0001	1.6	1.1-2.2	0.017
≥ 3	99 (91)	1.9	1.4-2.6				
PD-L1 status (TPS)	158 (129)			0.108			
≥ 50	88 (67)	-		-			
0	33 (31)	1.5	1.0-2.4	0.048			
1-49	37 (31)	1.3	0.9-2.0	0.189			
Disease stage at ICI initiation	201 (169)						
Non metastatic	25 (21)	-		0.133			
Metastatic	176 (148)	1.4	0.9-2.3				
Brain metastasis	201 (169)						
No	136 (107)	-		<0.001			
Yes	65 (62)	1.8	1.3-2.5				
Liver metastasis	201 (169)						
No	168 (137)	-		<0.0001	1.9	1.2-2.9	0.006
Yes	33 (32)	2.4	1.6-3.5				
ICI sequence	201 (169)						
First-line	61 (49)	-		0.828			
Following chemotherapy	140 (120)	1.0	0.7-1.4				
ICI type	201 (169)						
Nivolumab and Ipilimumab	12 (10)	-		0.328			
Nivolumab or Pembrolizumab	189 (159)	1.4	0.7-2.6				
LIPI score	201 (169)			0.022			0.023
0	57 (44)	-		-	-		-
1	101 (85)	1.3	0.9-1.9	0.155	1.7	1.1-2.5	0.010
2	43 (40)	1.8	1.2-2.8	0.006	1.7	1.1-2.7	0.023
Grade 3-4 irAEs	201 (169)						
Yes	36 (25)	-		<0.0001	2.4	1.6-3.8	<0.0001
No	165 (144)	2.4	1.6-3.7				

* During the month preceding and/or the three first months following the initiation of ICI treatment. 95% CI, 95% confidence interval; aHR, adjusted hazard ratio; HR, hazard ratio; ICI, immune checkpoint inhibitor; irAEs, immune-related adverse events; PD-L1, programmed death ligand 1; PS, performance status, TPS, tumor proportion score; TTNT, time to new treatment.

The multivariable analysis included 193 patients with all available data, accounting for 161 events.

Supplementary Table S3 – Multivariable analysis by Cox proportional hazards for overall survival (OS), including PD-L1

Multivariable analysis (events = 102/151)				
Variables	aHR	95% CI	P value	
Gender				
Female	1.8	1.1-2.8	0.014	
Male				
PS at ICI initiation				
0-1	1.9	1.2-2.9	0.005	
≥ 2				
Antibiotic intake*				
No	1.7	1.1-2.6	0.017	
Yes				
Corticosteroid intake*				
No	2.2	1.2-3.9	0.010	
Yes				
Number of metastatic sites				
< 3	1.6	0.9-2.6	0.088	
≥ 3				
Brain metastasis				
No	1.7	1.0-2.9	0.035	
Yes				
Liver metastasis				
No	2.5	1.4-4.2	0.001	
Yes				
LIPI score			<0.001	
0	-		-	
1	3.2	1.8-5.6	<0.0001	
2	2.2	1.2-4.0	0.007	
Grade 3-4 irAEs				
No	3.4	1.9-6.4	<0.0001	
Yes				

* During the month preceding and/or the three first months following the initiation of ICI treatment.

95% CI, 95% confidence interval; aHR, adjusted hazard ratio; ICI, immune checkpoint inhibitor; irAEs, immune-related adverse events; PS, performance status.

PD-L1 was included in the modeling procedure, the multivariable analysis including 151 patients with all available data accounting for 102 events. PD-L1 is not retained in the final model. Stage was excluded either from the model since tightly linked to brain, liver and number of metastases variables.