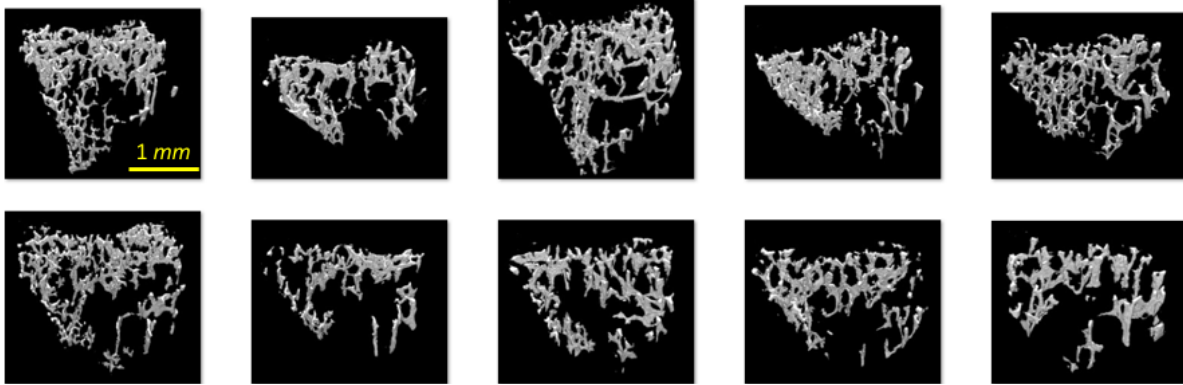
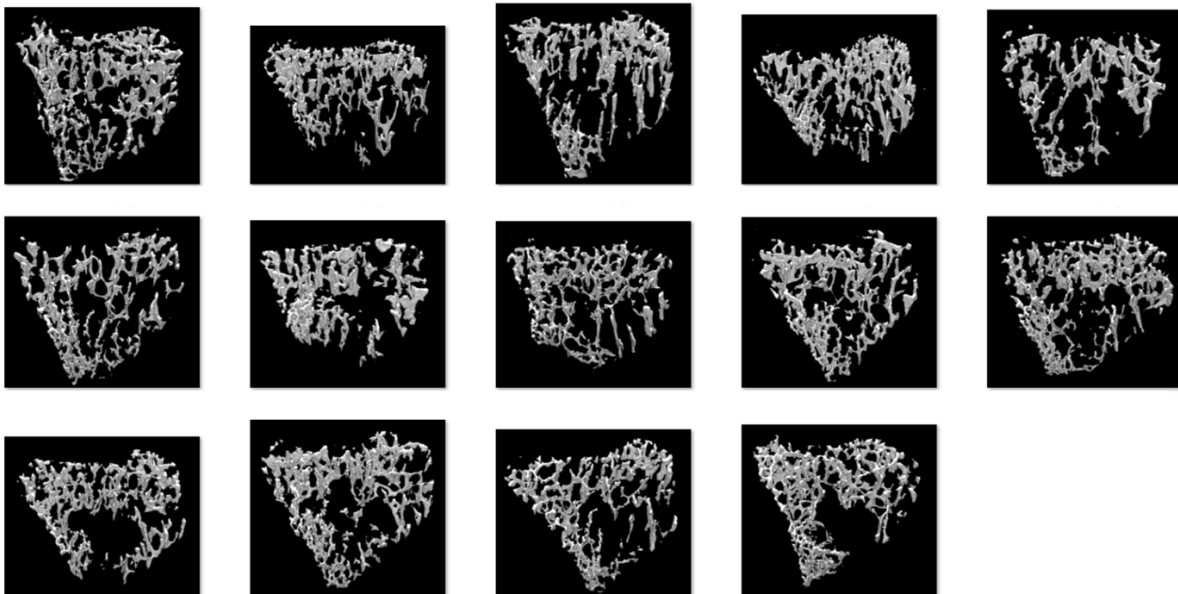


In this supplementary, we attached all 73 results of trabecular bone in 8 groups (screenshots of 3D volume rendering). Specifically, we considered two time points at 8 days (time point 1) and 22 days (time point 2) after the injection of breast cancer tumor cells. The different treatments of placebo, Bevacizumab, Vatalanib, and combination drugs (Bevacizumab + Vatalanib) were performed at each time point.

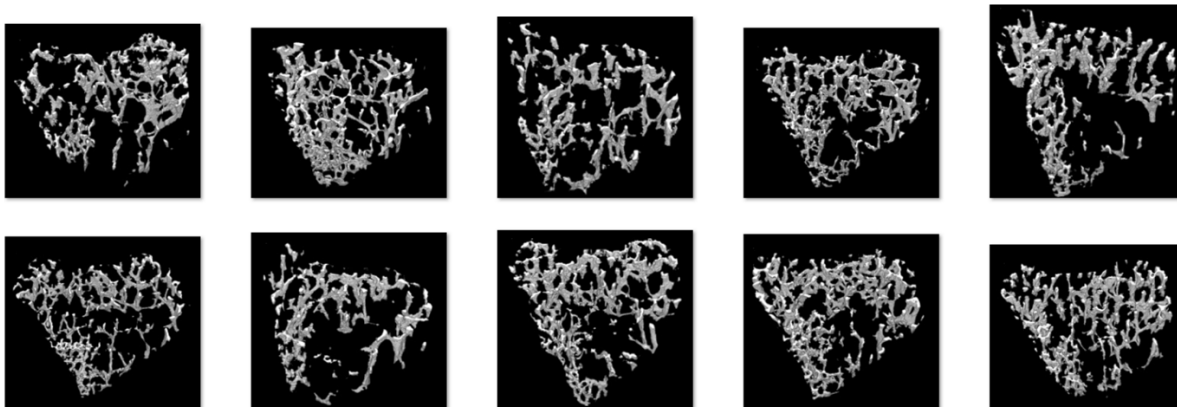
Group (T1P): time point 1, placebo



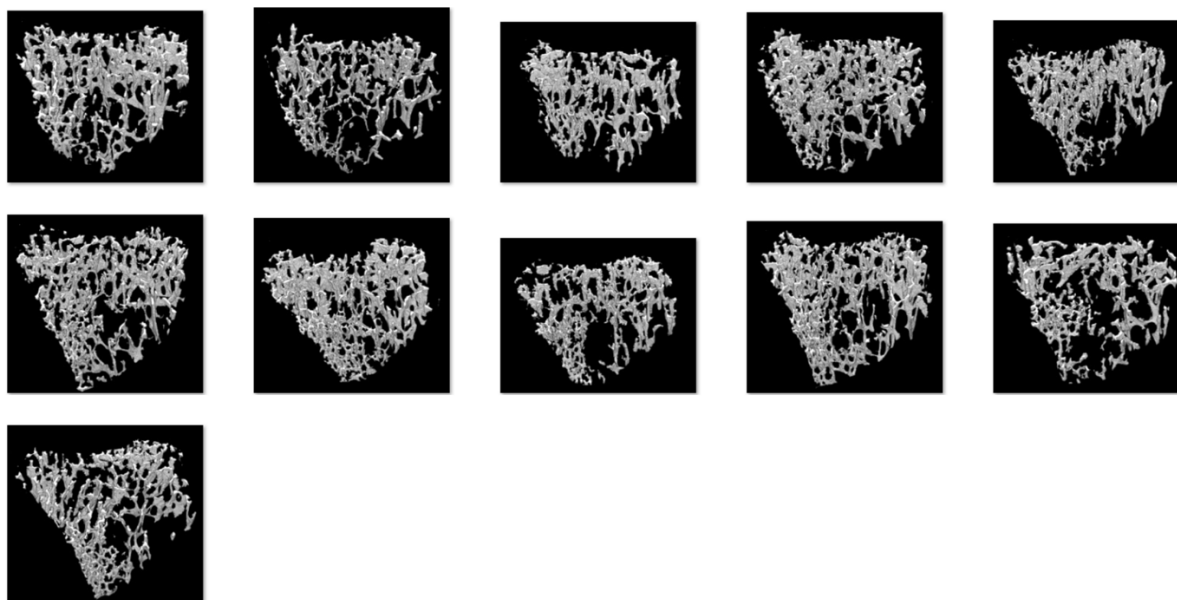
Group (T1B): time point 1, Bevacizumab



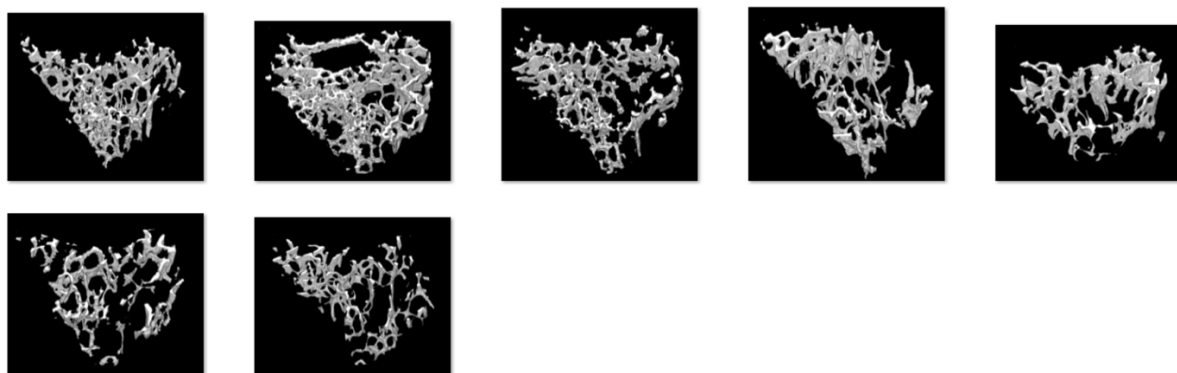
Group (T1V): time point 1, Vatalanib



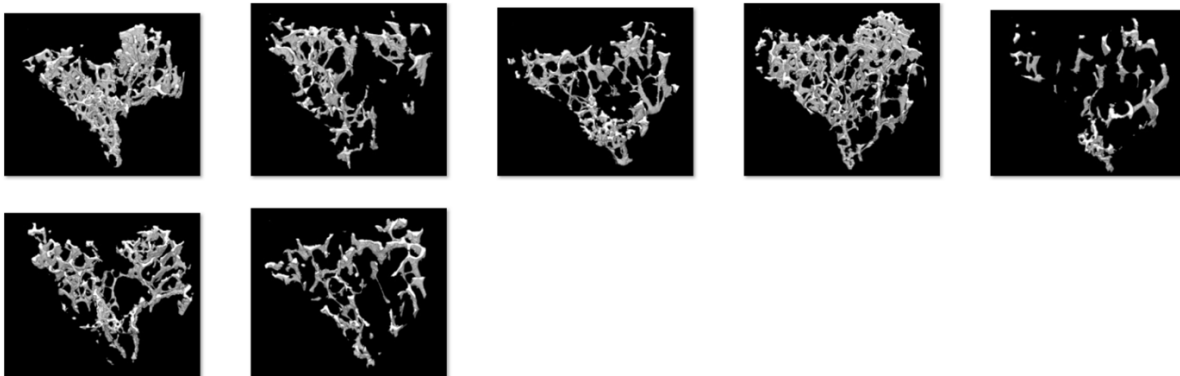
Group (T1C): time point 1, combination (Bevacizumab + Vatalanib)



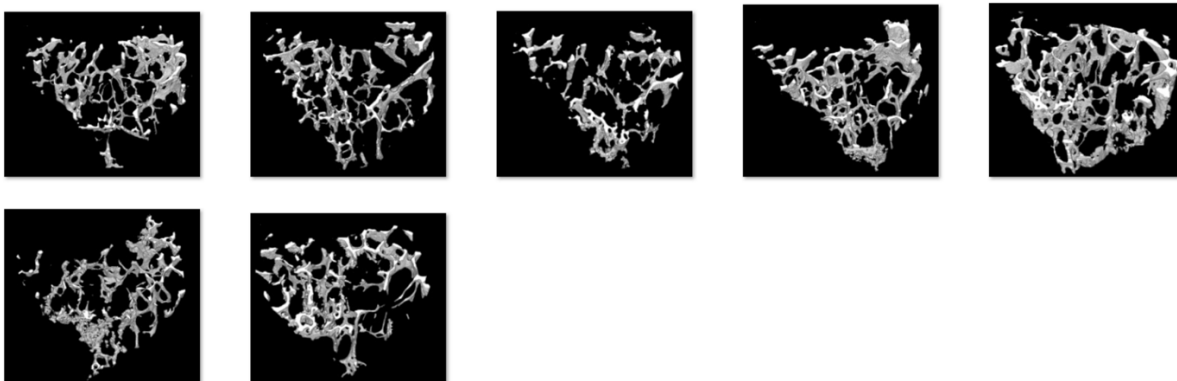
Group (T2P): time point 2, placebo



Group (T2B): time point 2, Bevacizumab



Group (T2V): time point 2, Vatalanib



Group (T2C): time point 2, combination (Bevacizumab + Vatalanib)

