

Figure S1: Different CTP grade at 1-year OS in the HS group ($p = 0.000$).

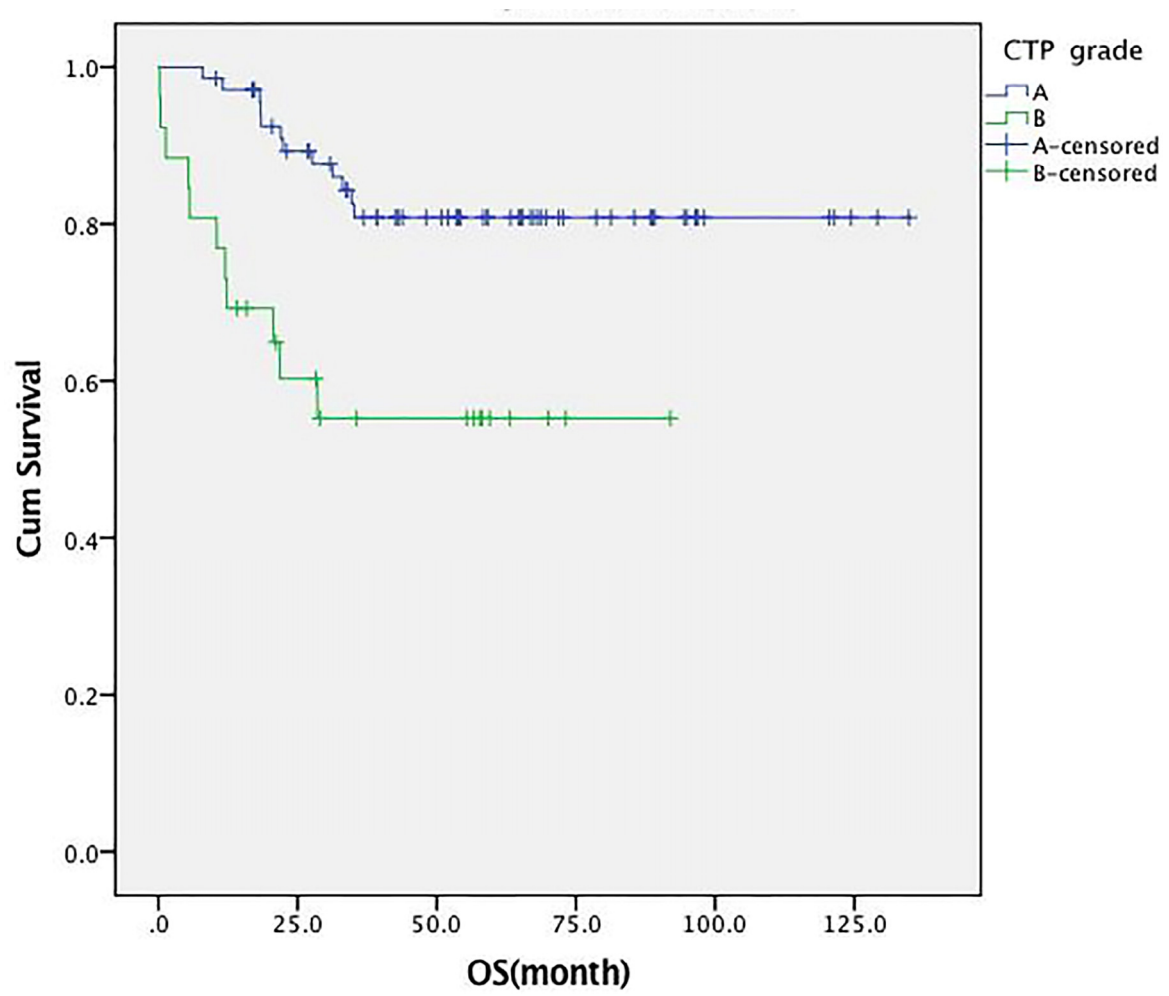


Figure S2: Different CTP grade at 3-year OS in the HS group ($p = 0.002$).

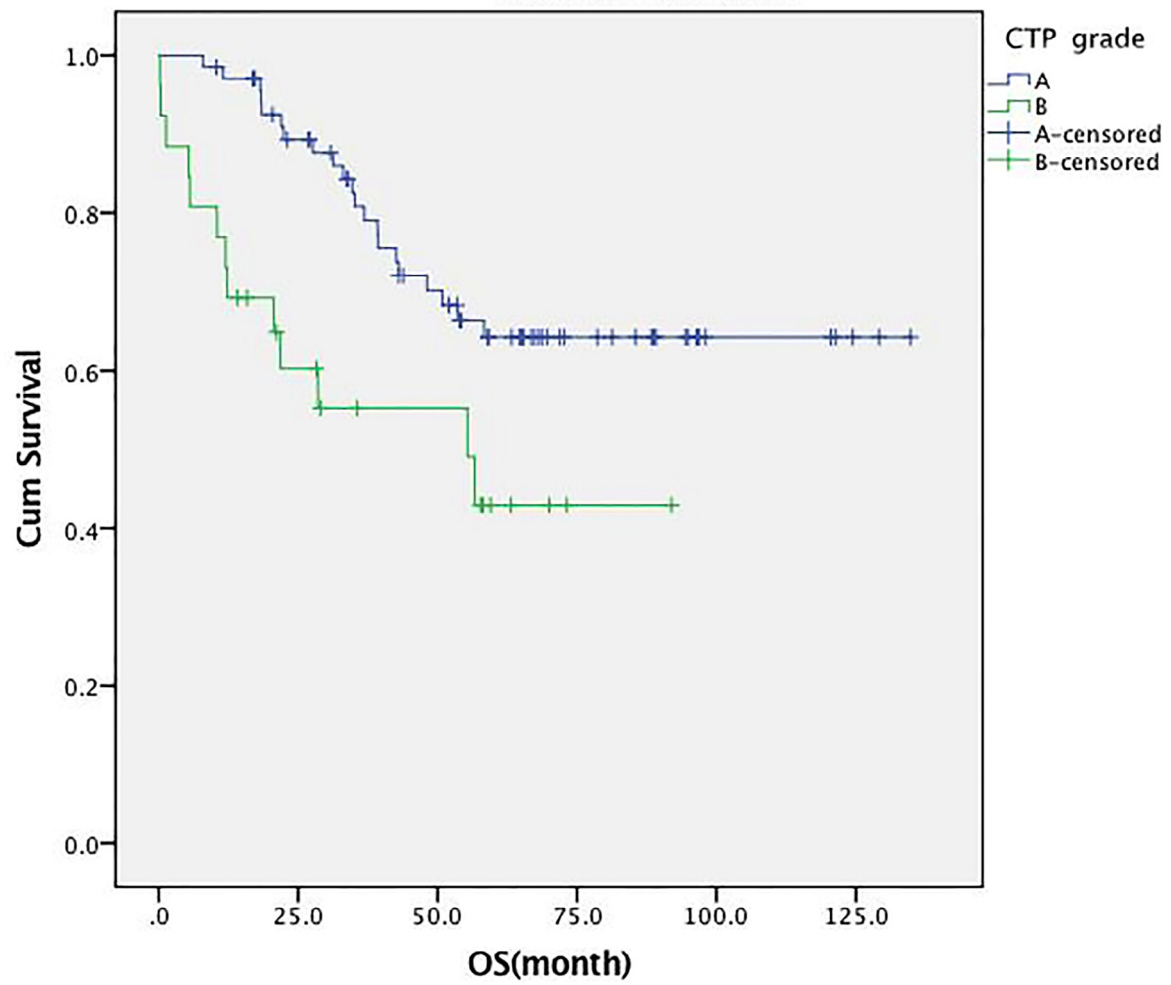


Figure S3: Different CTP grade at 5-year OS in the HS group ($p = 0.009$).

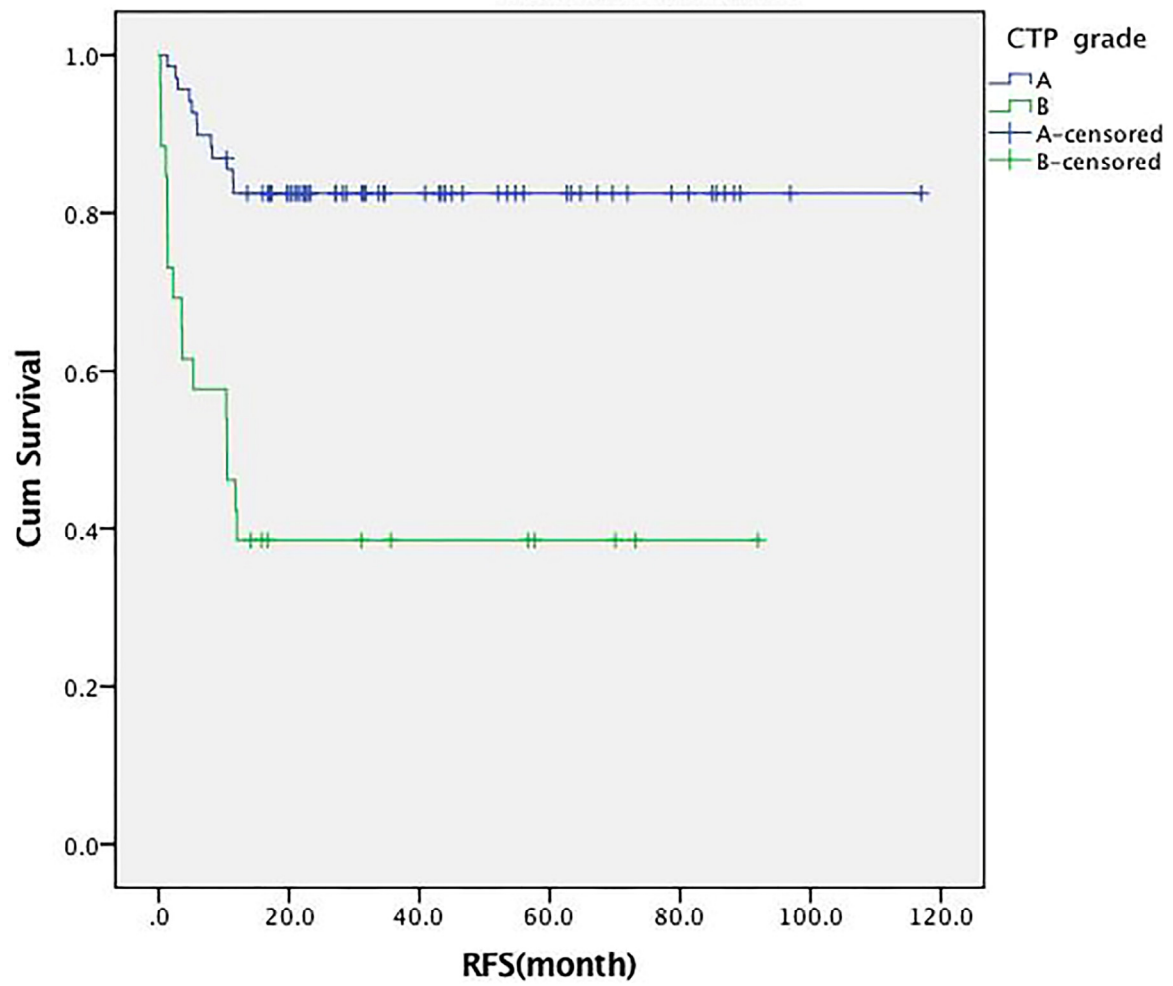


Figure S4: Different CTP grade at 1-year RFS in the HS group ($p = 0.000$).

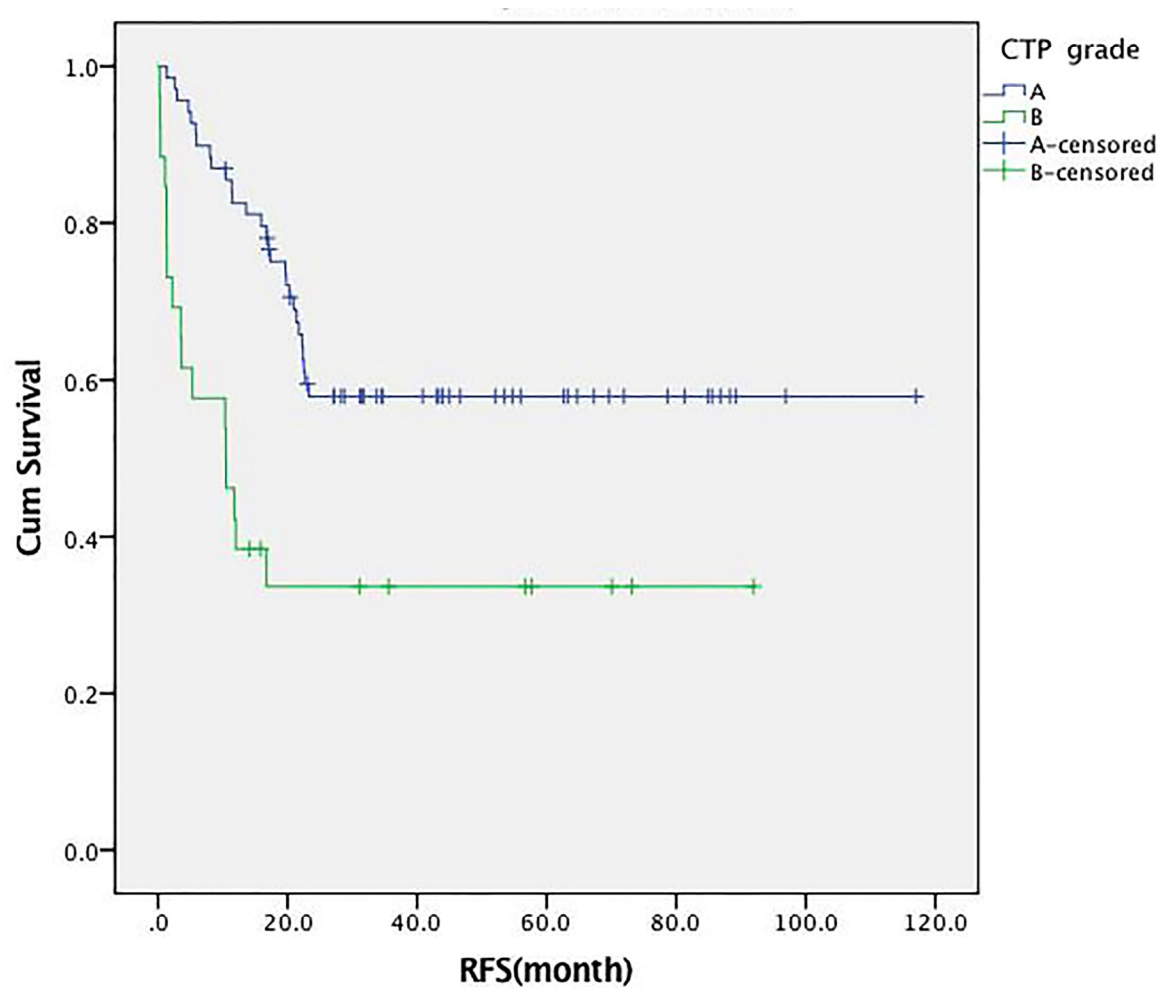


Figure S5: Different CTP grade at 2-year RFS in the HS group ($p = 0.001$).

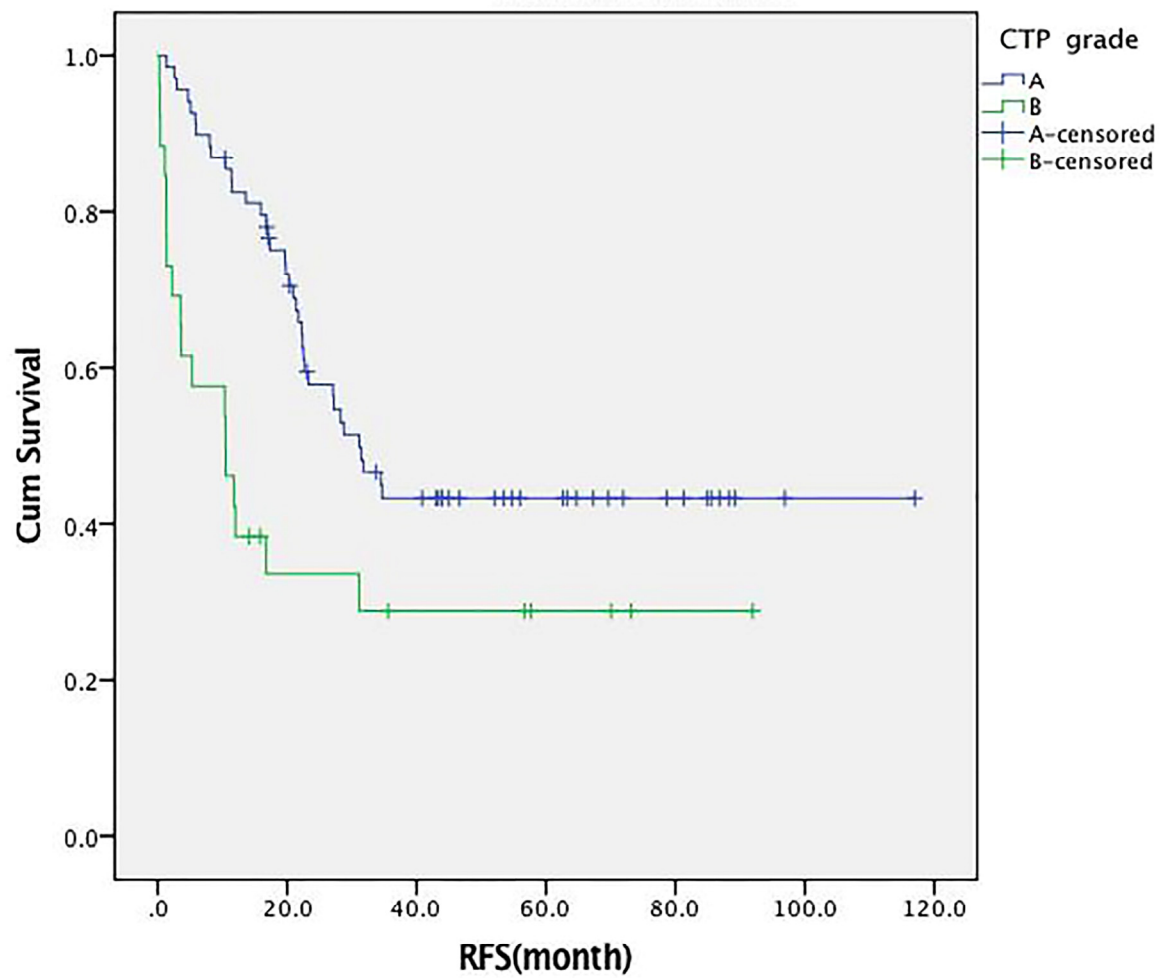


Figure S6: Different CTP grade at 3-year RFS in the HS group ($p = 0.004$).

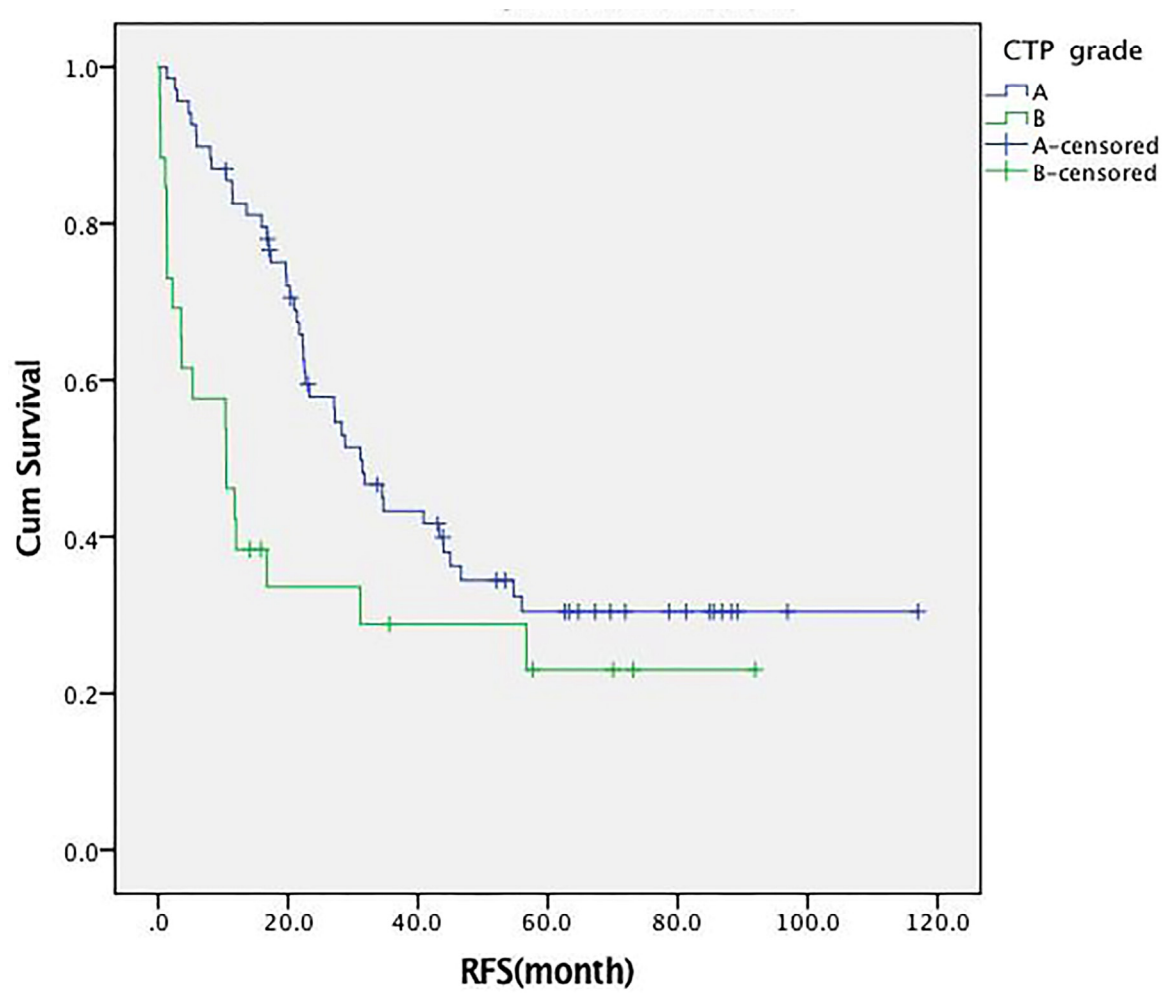


Figure S7: Different CTP grade at 5-year RFS in the HS group ($p = 0.014$).