

Uncropped blots: Figure 1C

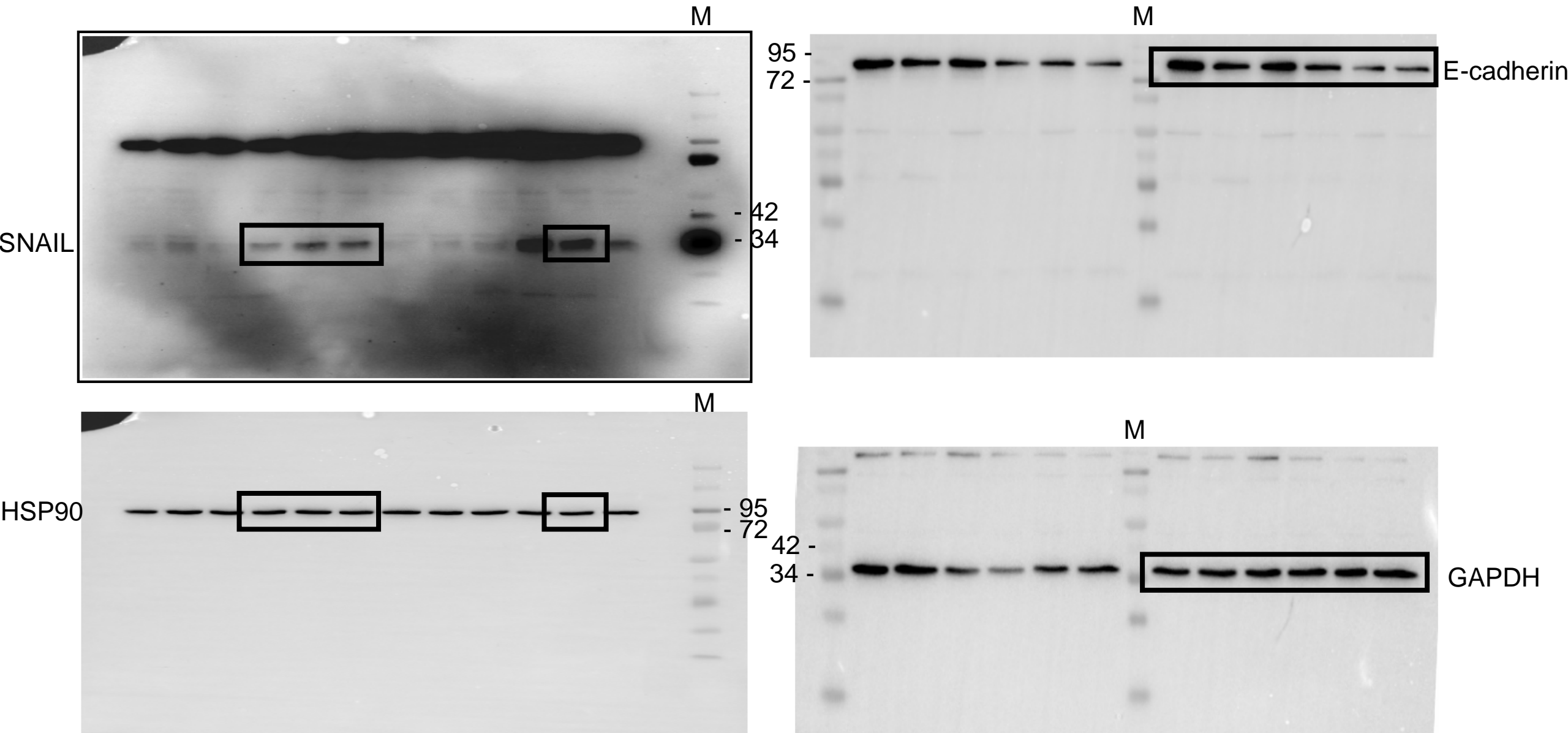


Figure legend: M = molecular weight marker (SM1841, Fermentas/Thermo Fisher Scientific)

Uncropped blots: Figure 4B

Panc1

M

β -actin

- 52

- 42

- 34

- 26

p21^{WAF1}

MDA-MB-231

M

34

26

17

p21^{WAF1}

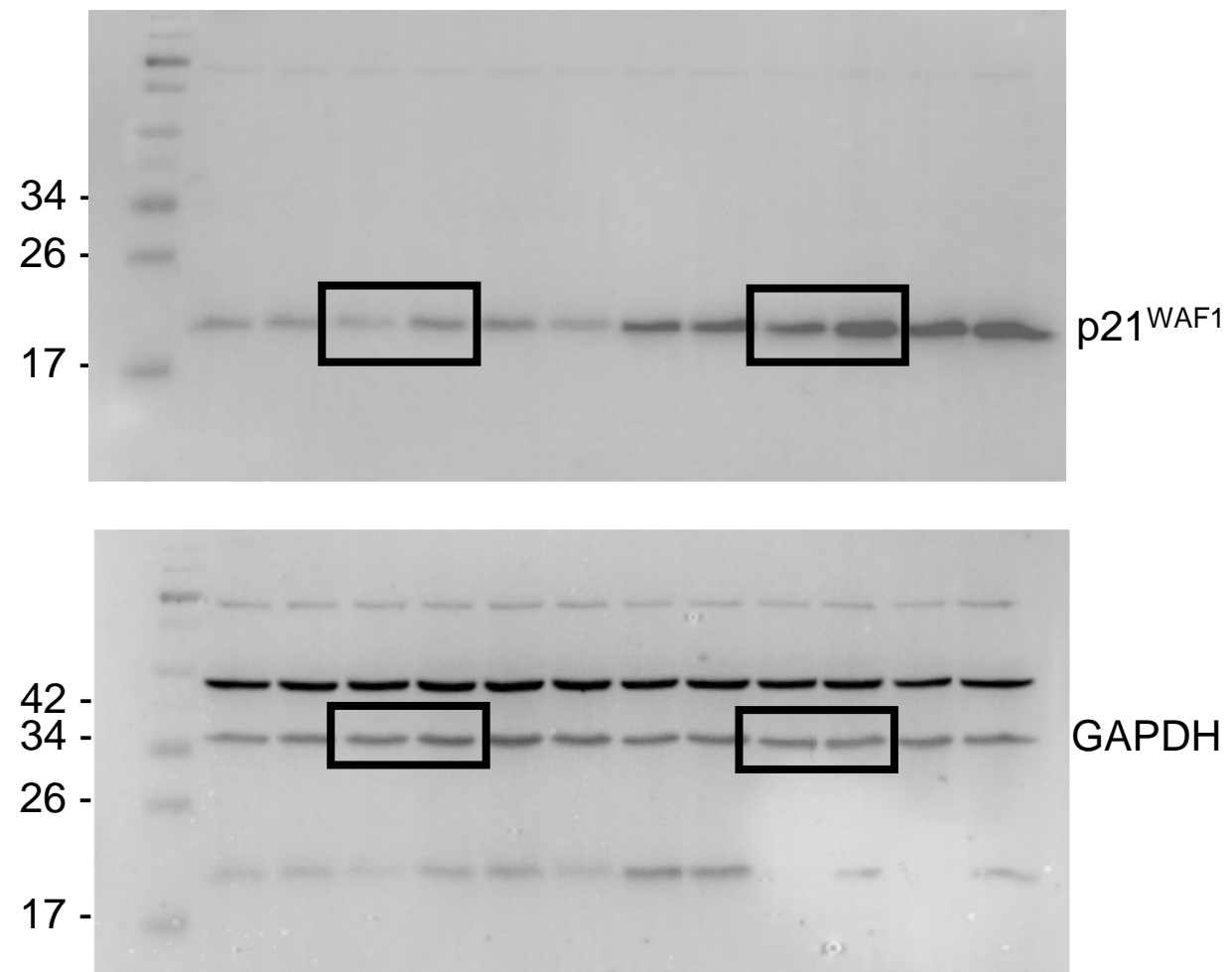
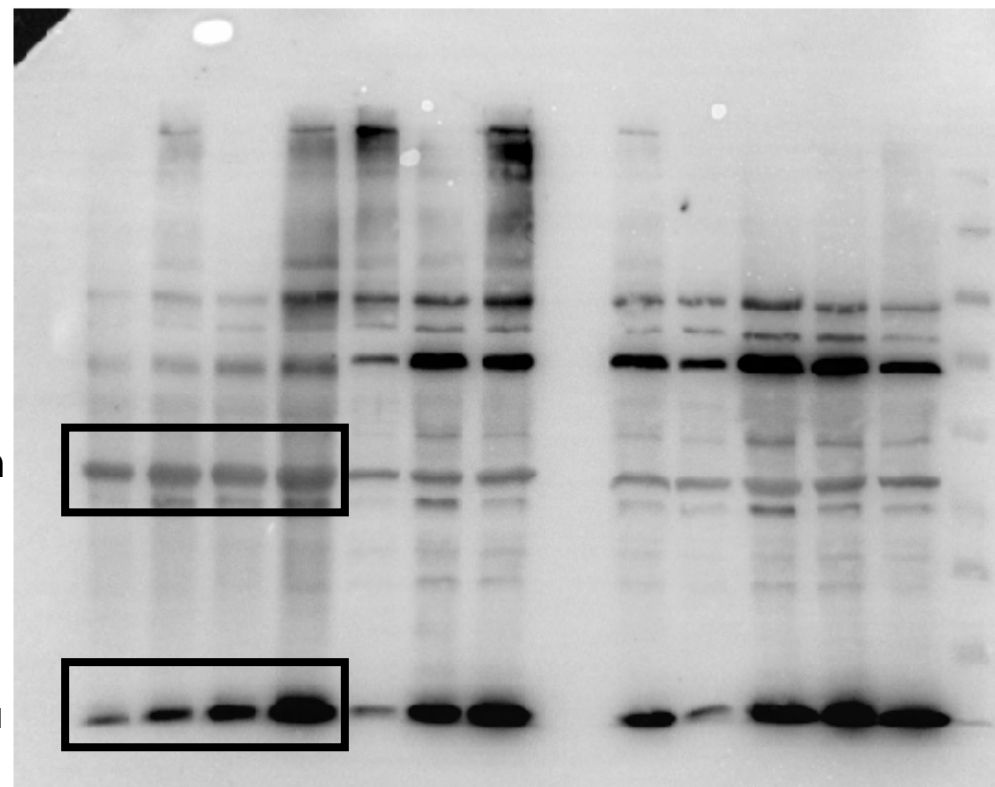
42

34

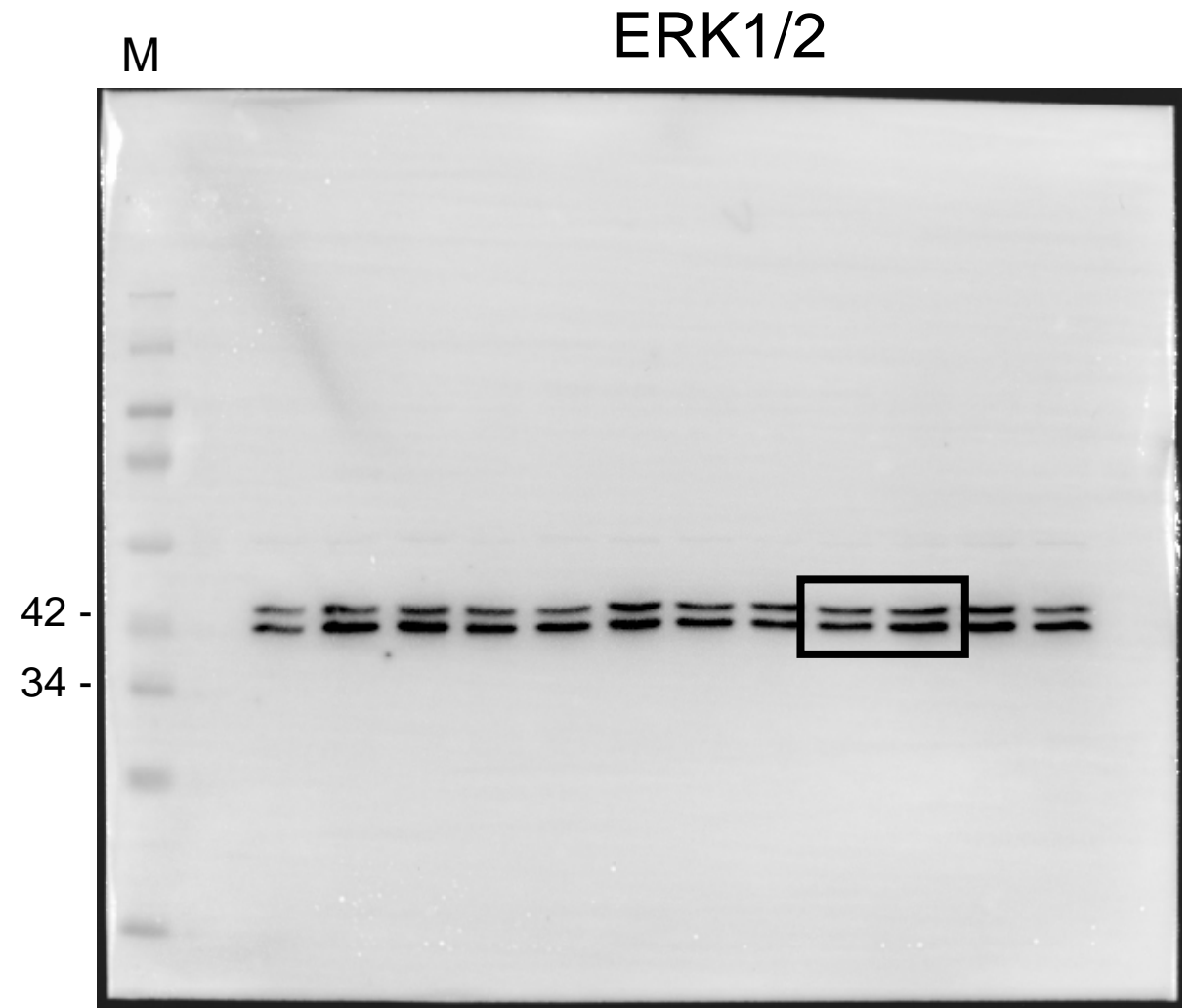
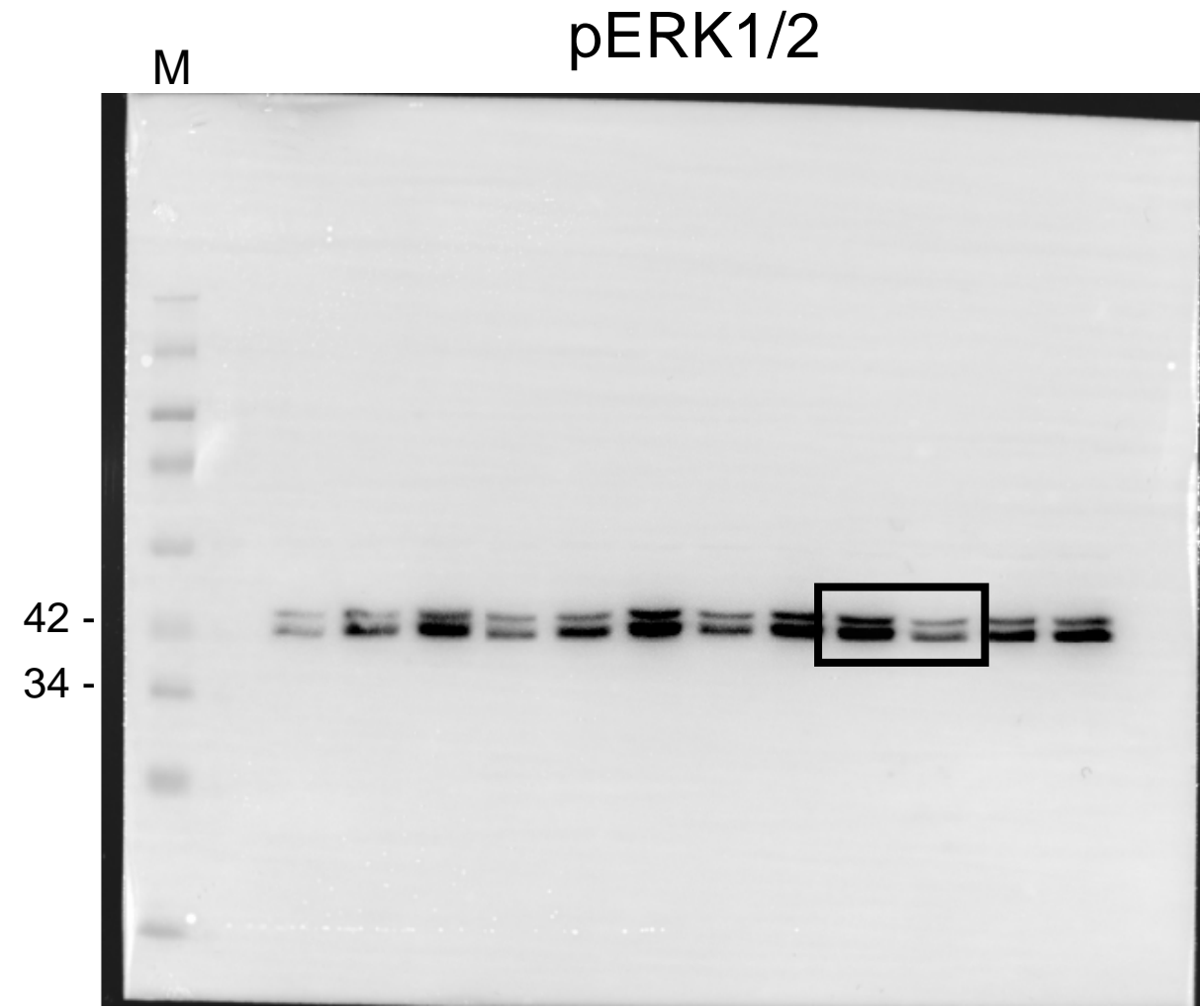
26

17

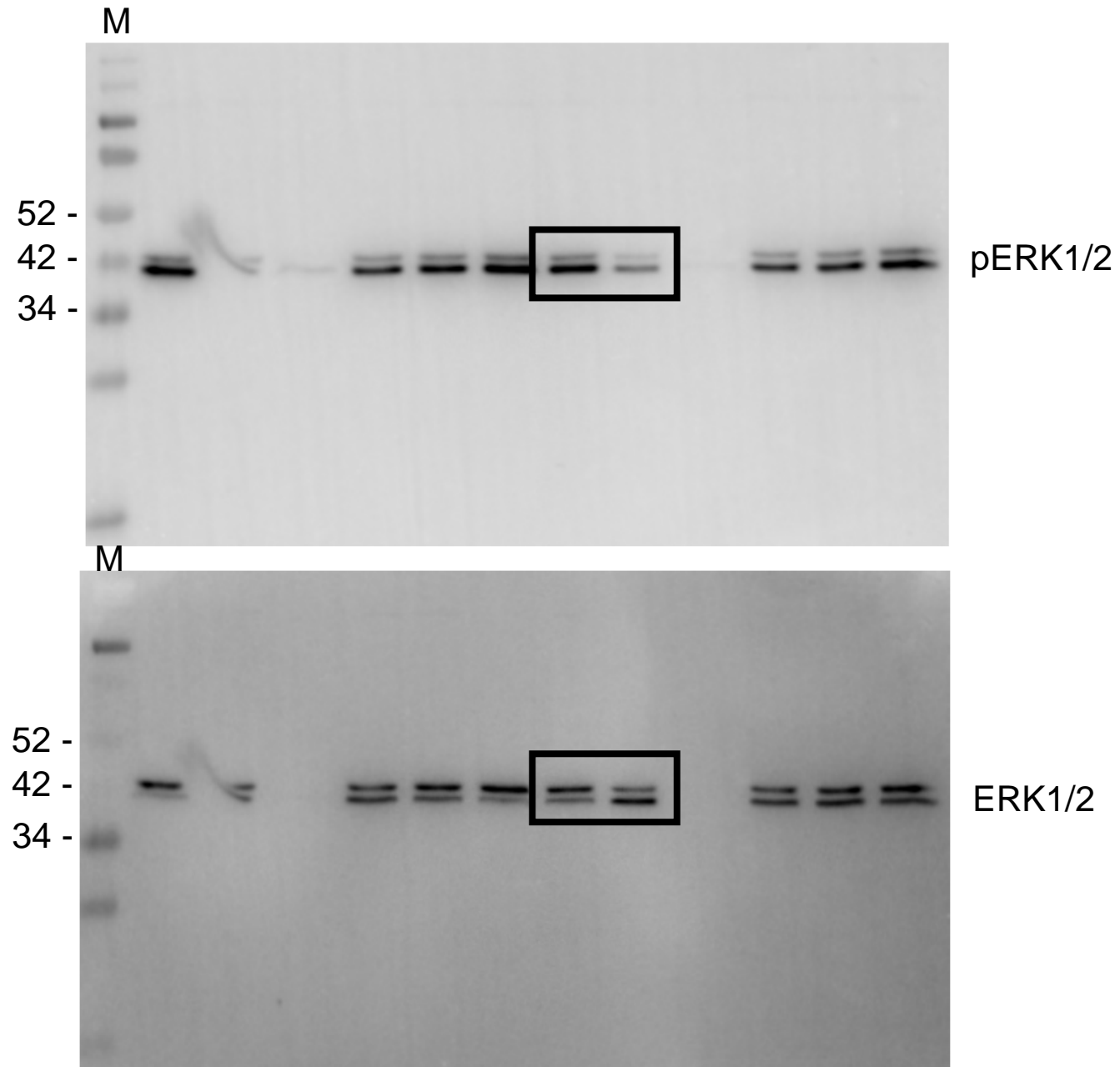
GAPDH



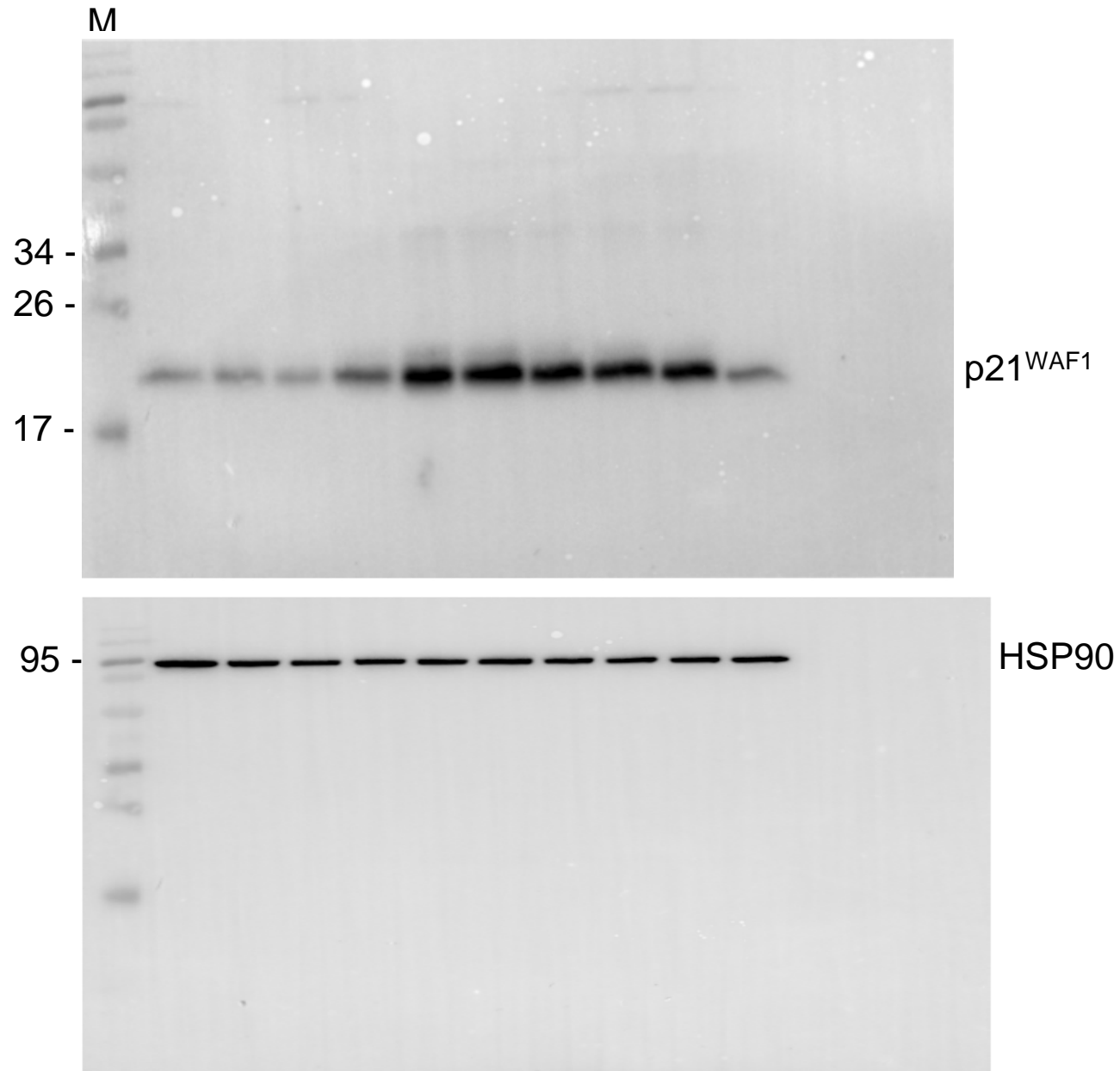
Uncropped blots: Figure 5D



Uncropped blots: Figure 6B

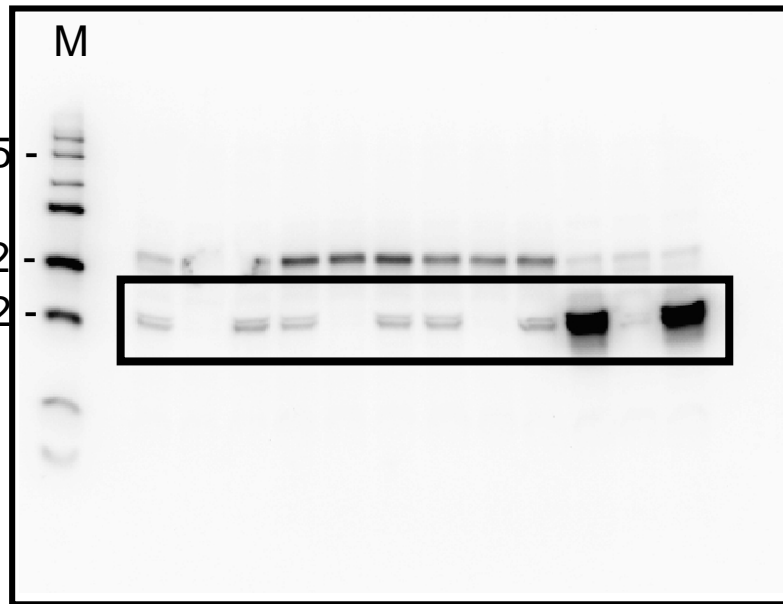


Uncropped blots: Figure S4

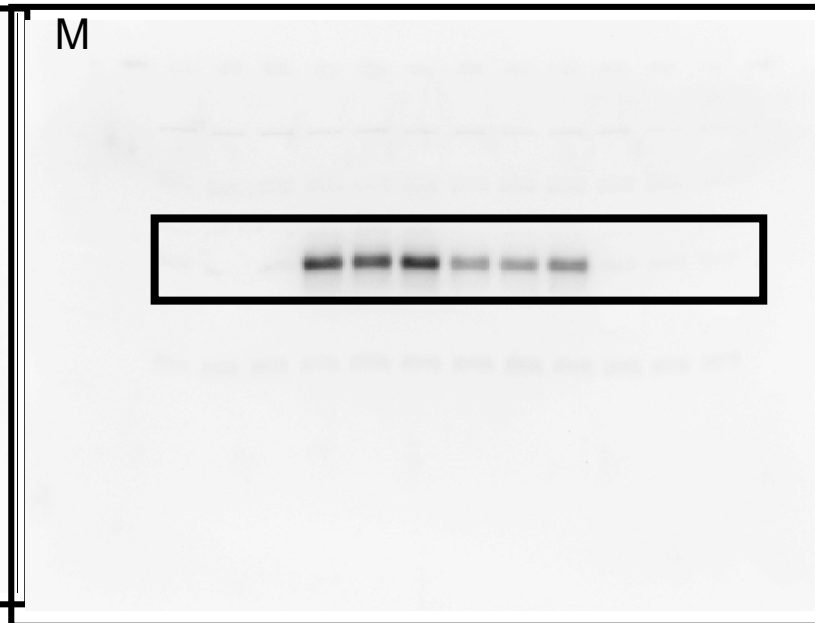


Uncropped blots: Figure S5

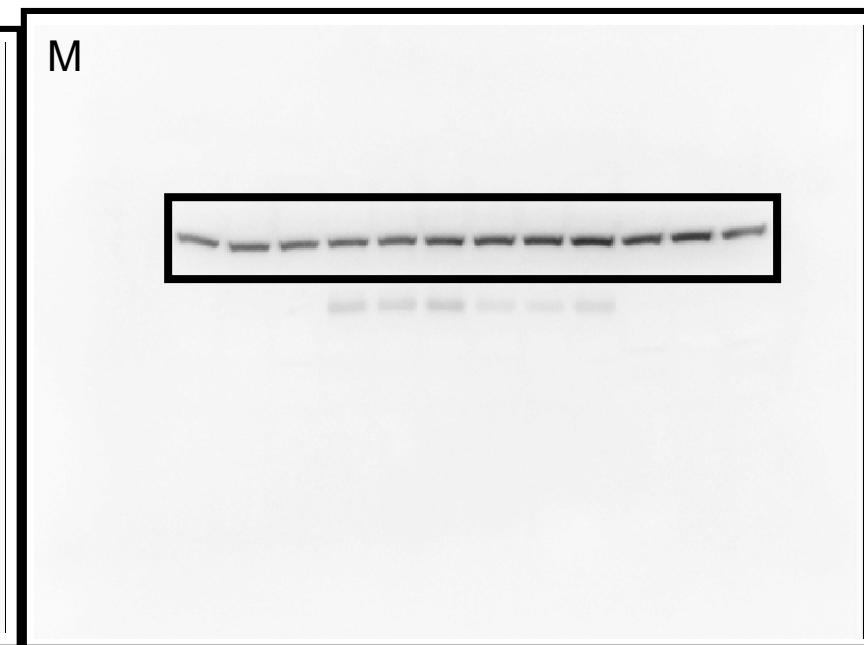
pERK1/2



pSMAD3C



HSP90



Uncropped blots: Figure S6

