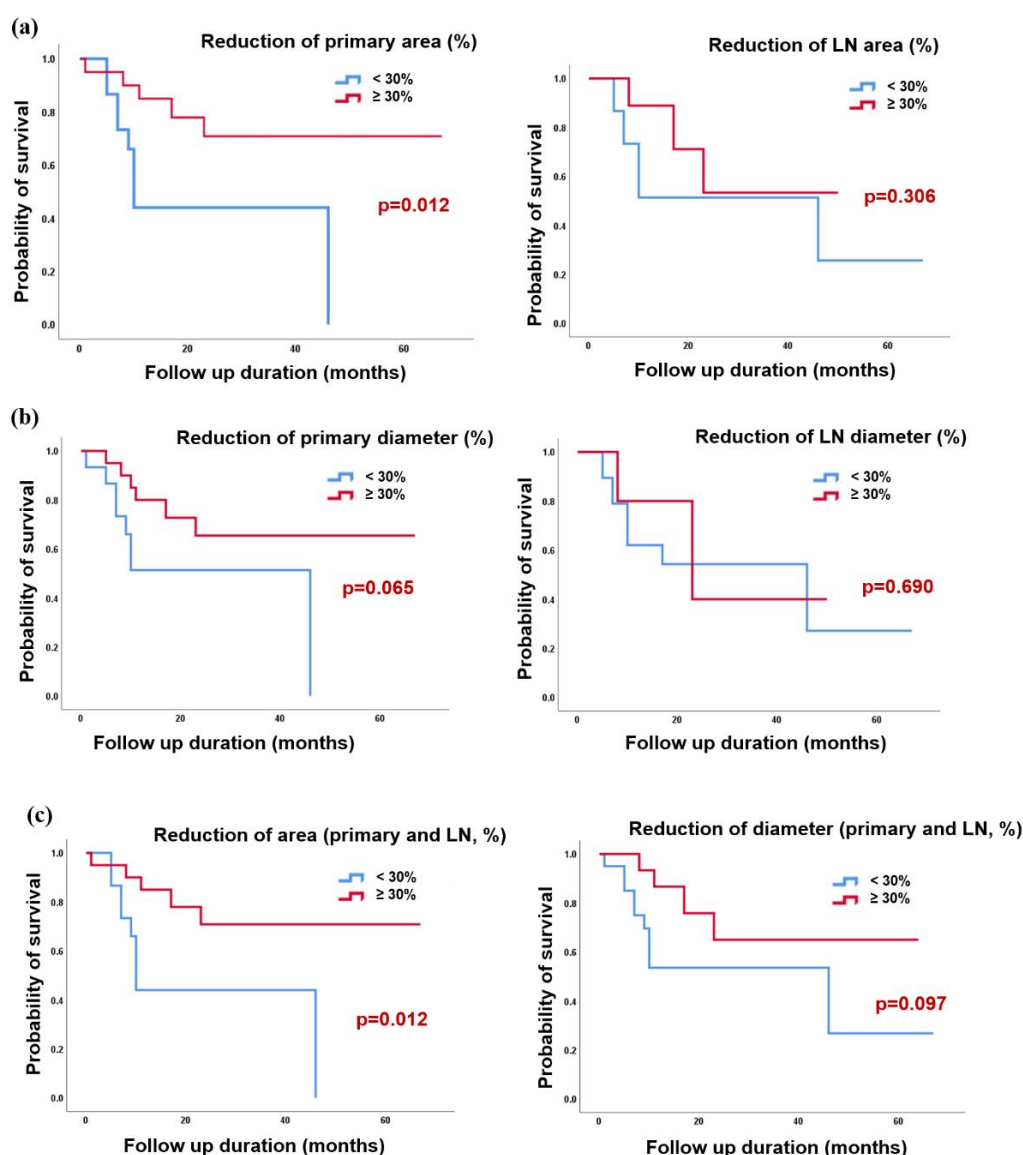


# Prognostic Significance of Interim Response Evaluation during Definitive Chemoradiotherapy for Locally Advanced Esophageal Squamous Cell Carcinoma

Jun Gi Yeom, Jie-Hyun Kim, Jun Won Kim, Yeona Cho, Ik Jae Lee, Chang Geol Lee, Jaeyoung Chun, Young Hoon Youn and Hyojin Park



**Figure S1.** Kaplan–Meier analysis of progression-free survival (PFS) rates shows a relationship between the reduction of lesion size and PFS. (a) Area reduction of the primary esophageal lesion/lymph node (LN) and PFS rates; (b) Diameter reduction of the primary esophageal lesion/LN and PFS rates; (c) Area and diameter reduction of both lesions (sum of primary esophageal lesion and LN) and PFS rates.