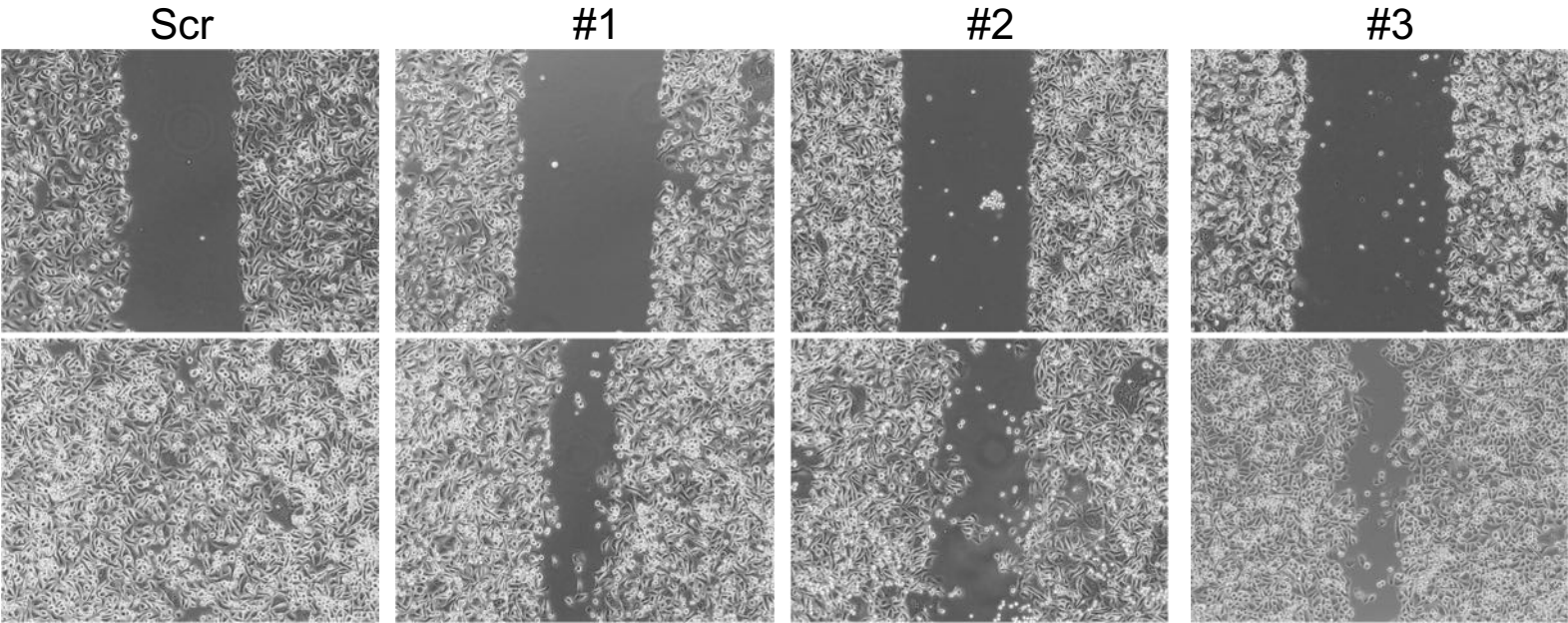


Cerebral cavernous malformation 1 determines YAP/TAZ
signaling-dependent metastatic hallmarks of prostate cancer cells

1. Shown are representative images of our
functional assays in figure 2A, 2B and 4F.

Figure 2A

PC3



DU145

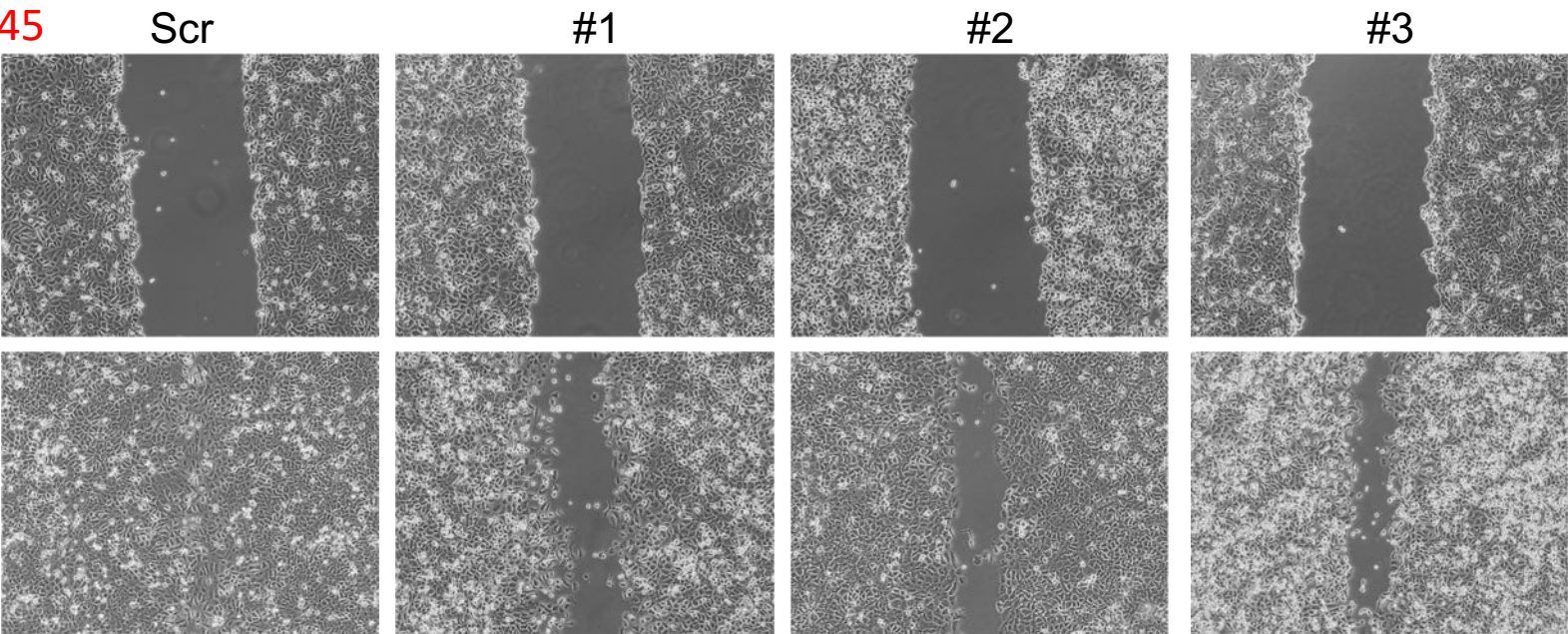


Figure 2B

PC3

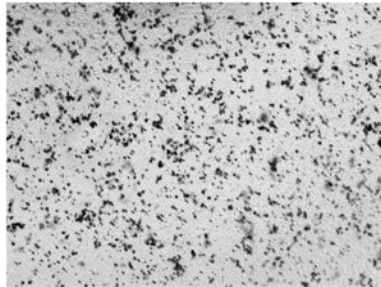
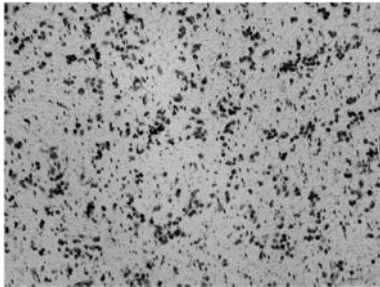
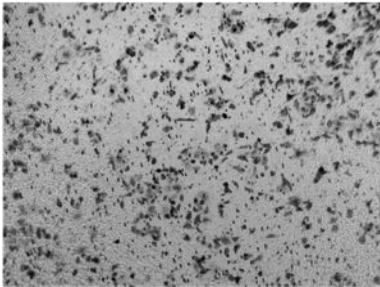
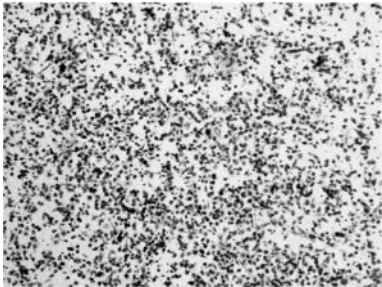
Scr

#1

#2

#3

Migration



Invasion

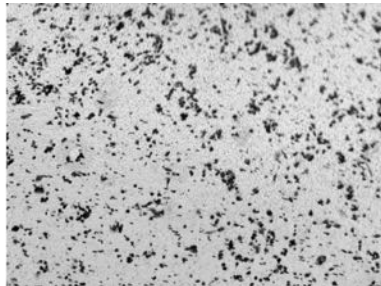
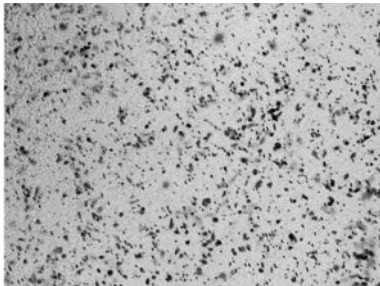
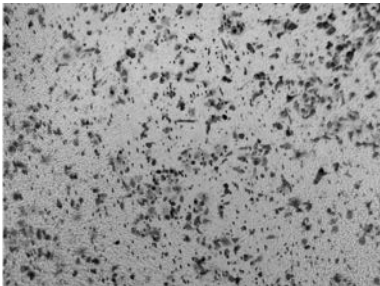
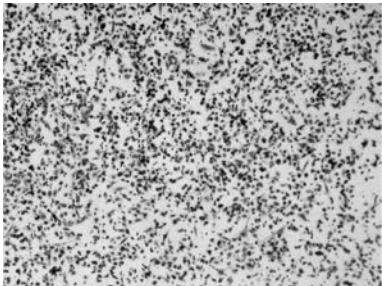


Figure 4F

PC3 migration

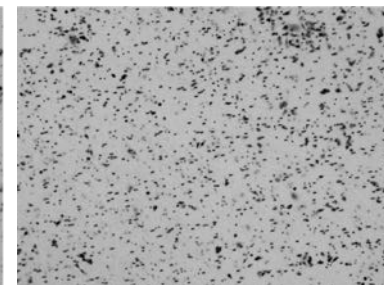
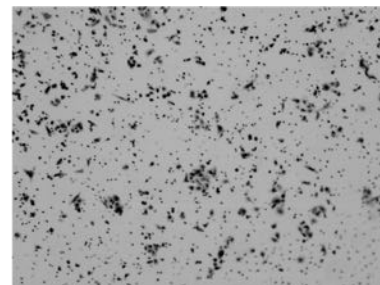
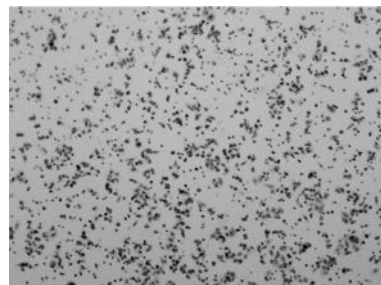
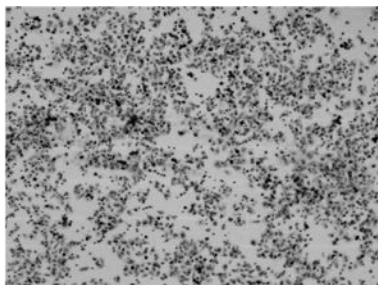
Scr

#1

#2

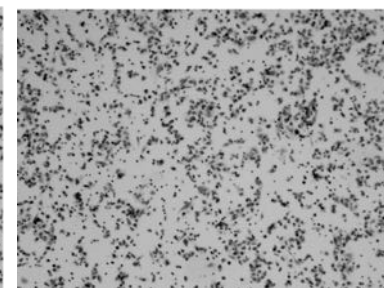
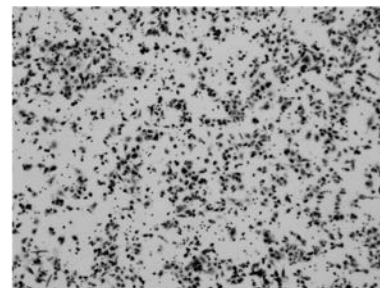
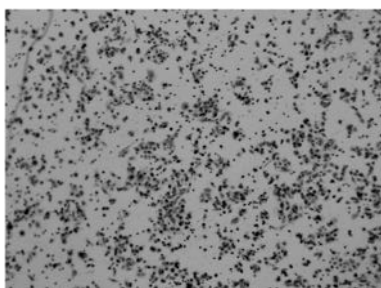
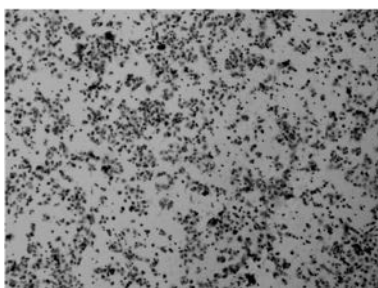
#3

Scr



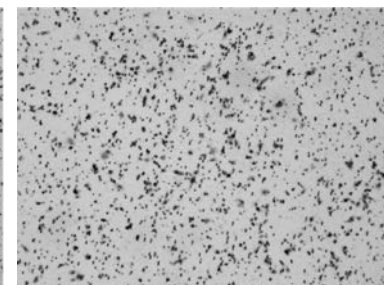
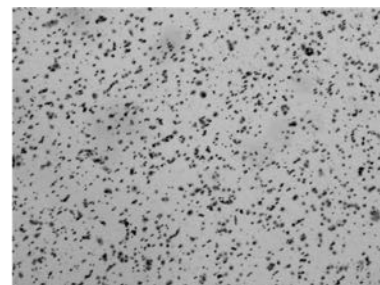
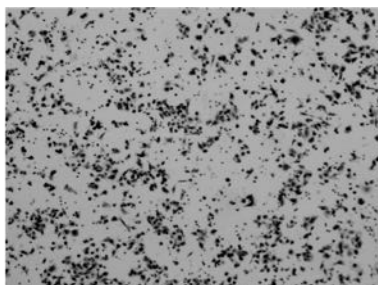
si DDX5

co-knockdown



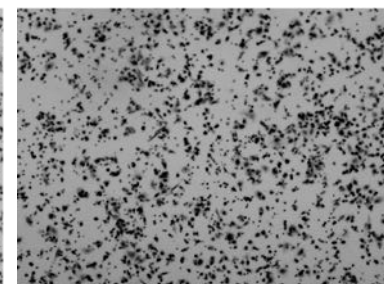
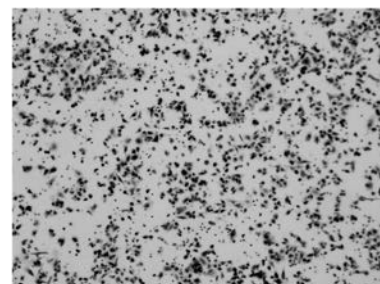
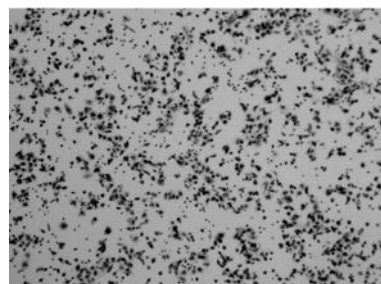
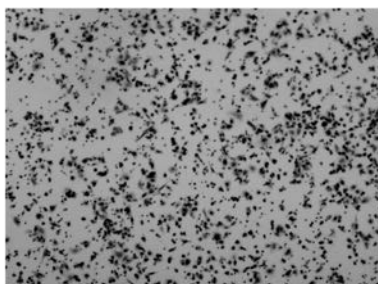
PC3 invasion

Scr



si DDX5

co-knockdown



2. Full gel pictures.

In our study, many membranes were cut into slices or stripped to probe multiple antibodies, when necessary for comparisons including normalization.

When the boundary of each membrane slice is not clear due to short exposure from high band signals, we show extra-space enough to include the slices.

Figure 2C

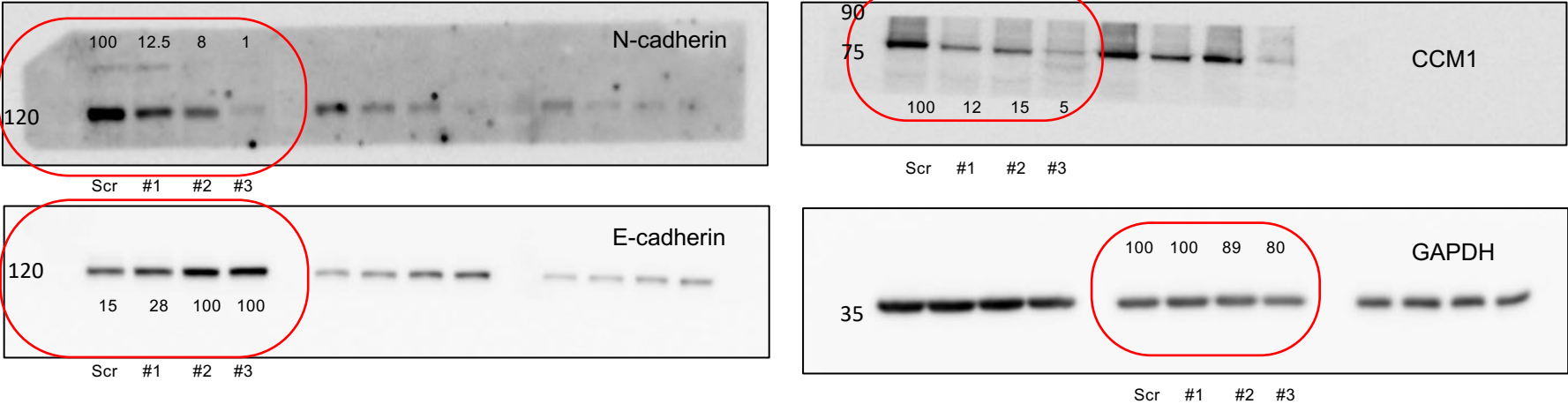


Figure 3E

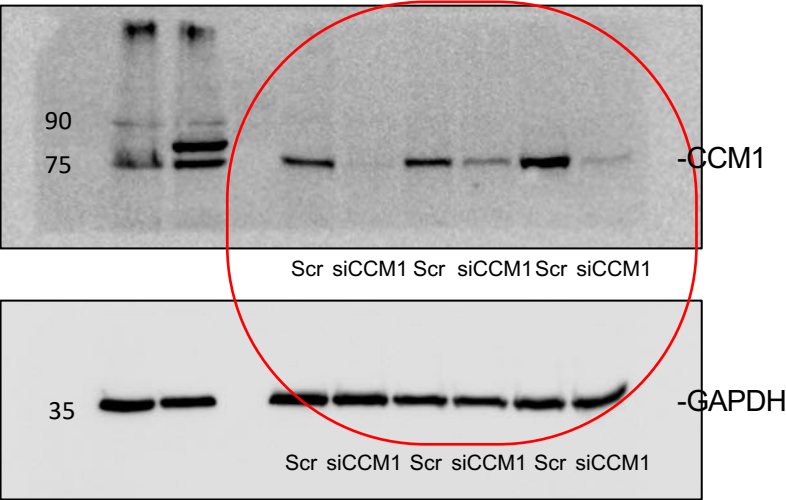


Figure 4A

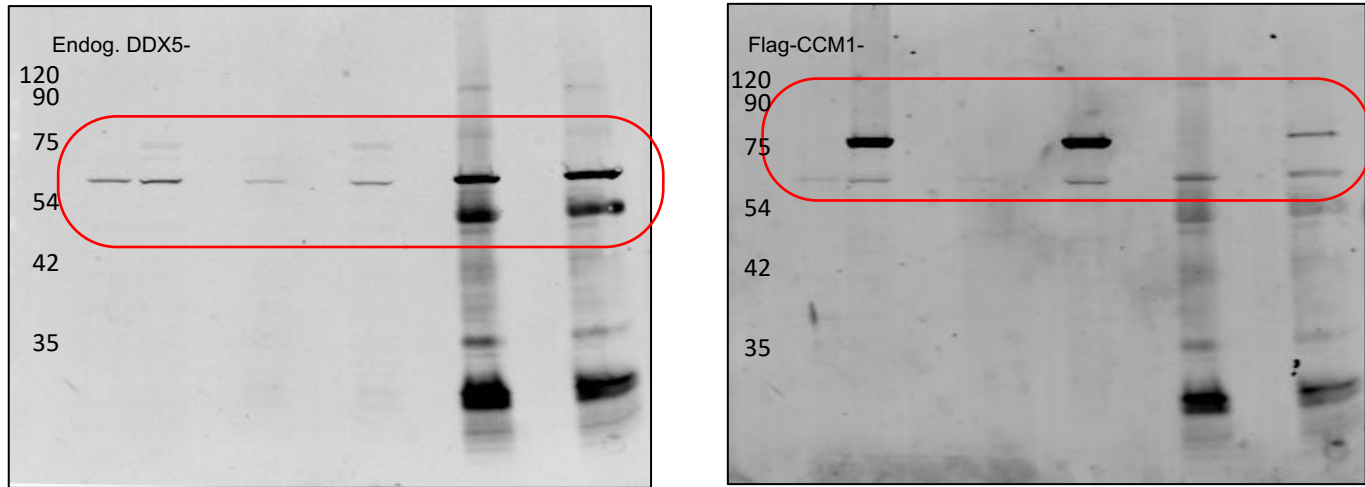


Figure 4B

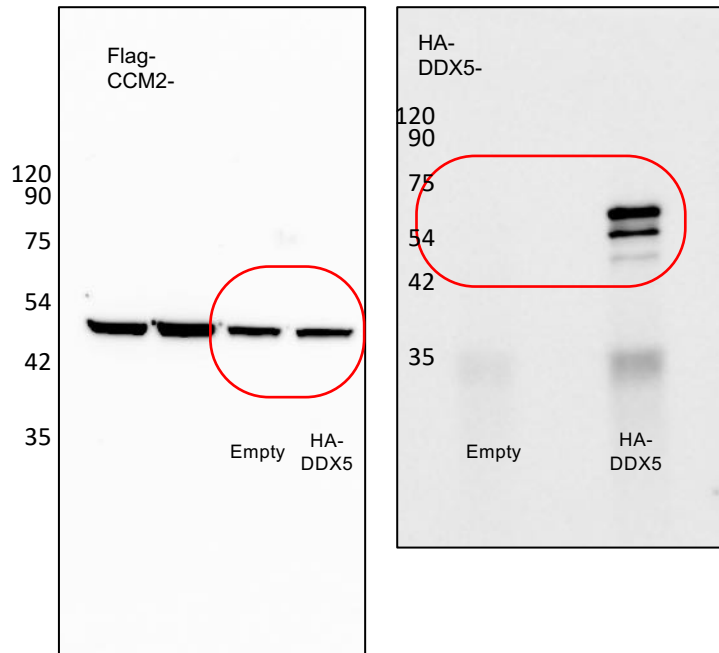


Figure 4C

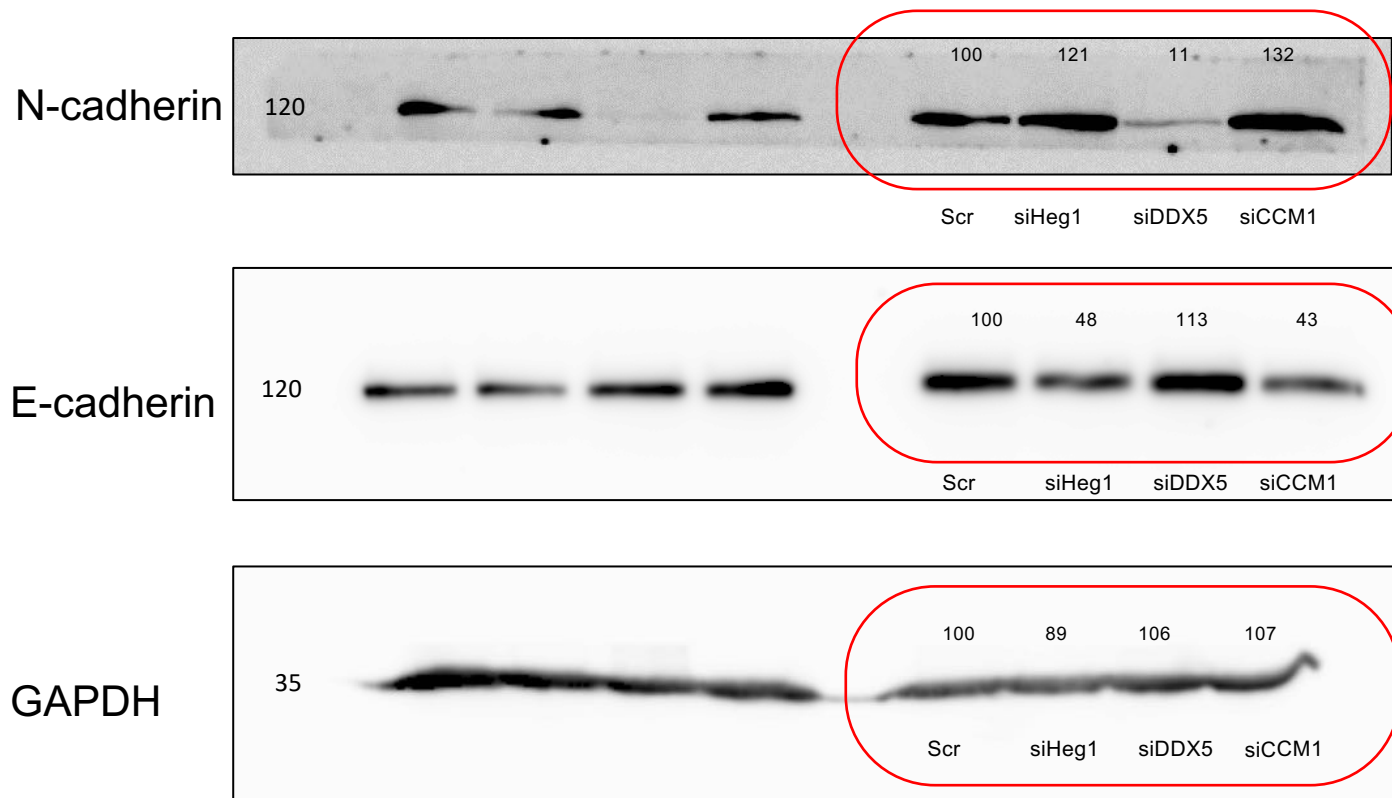


Figure 4E

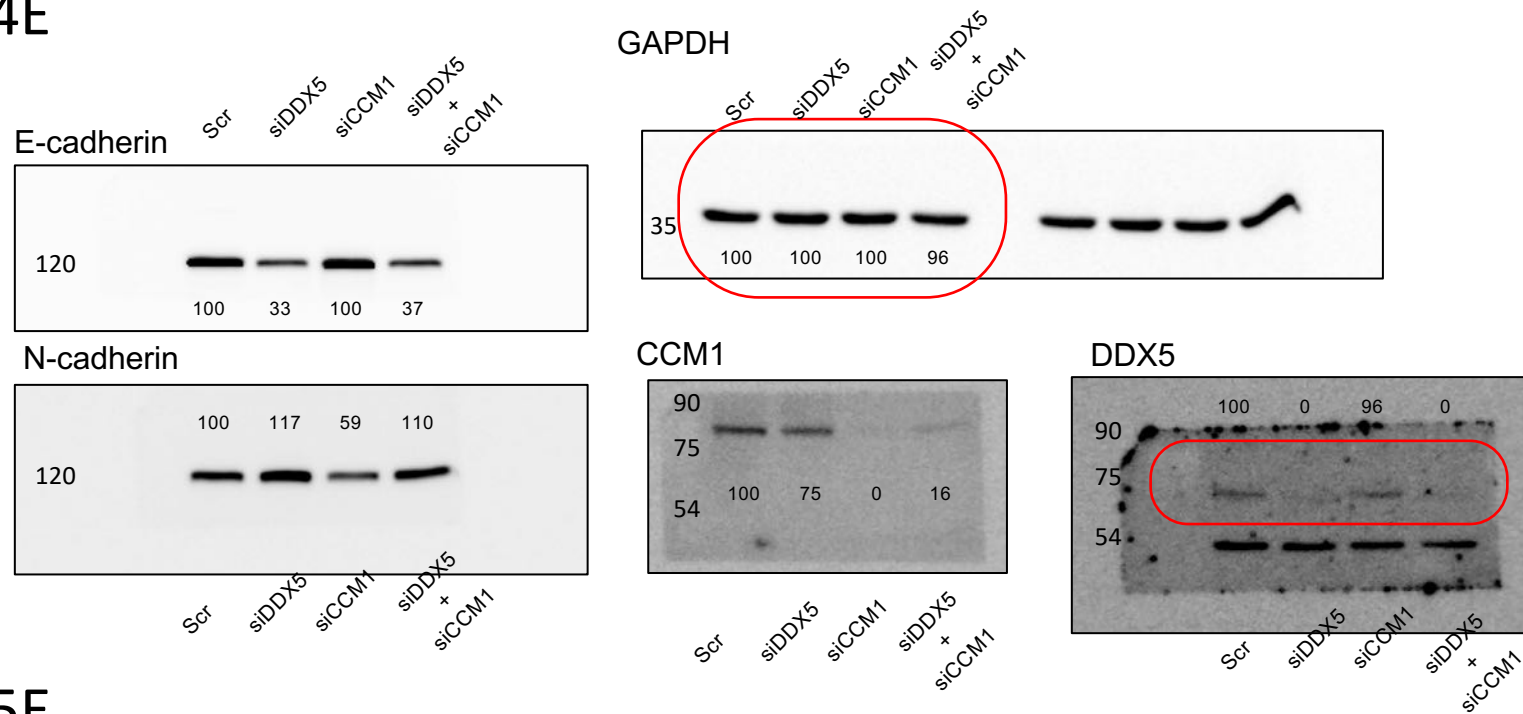


Figure 5E

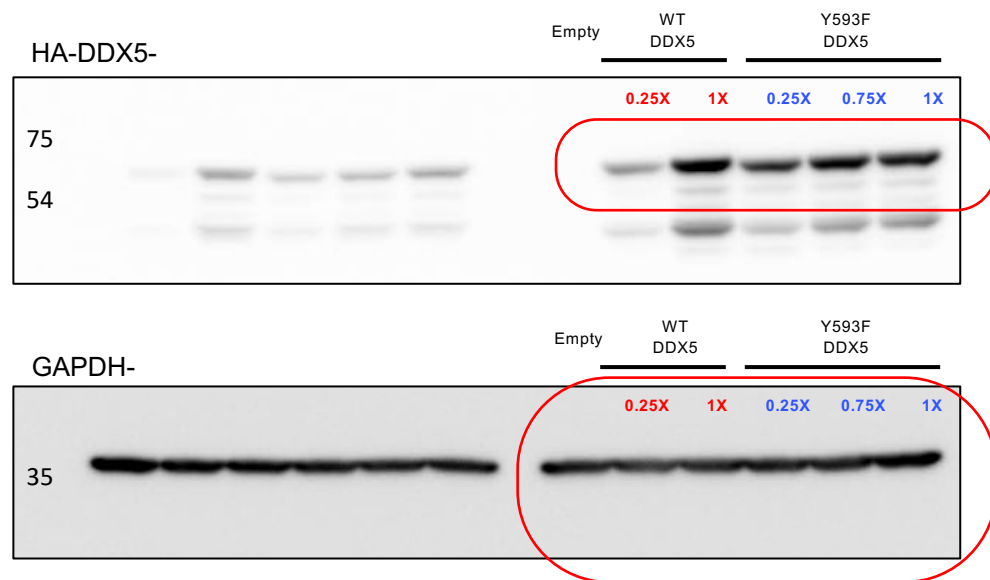


Figure 5G

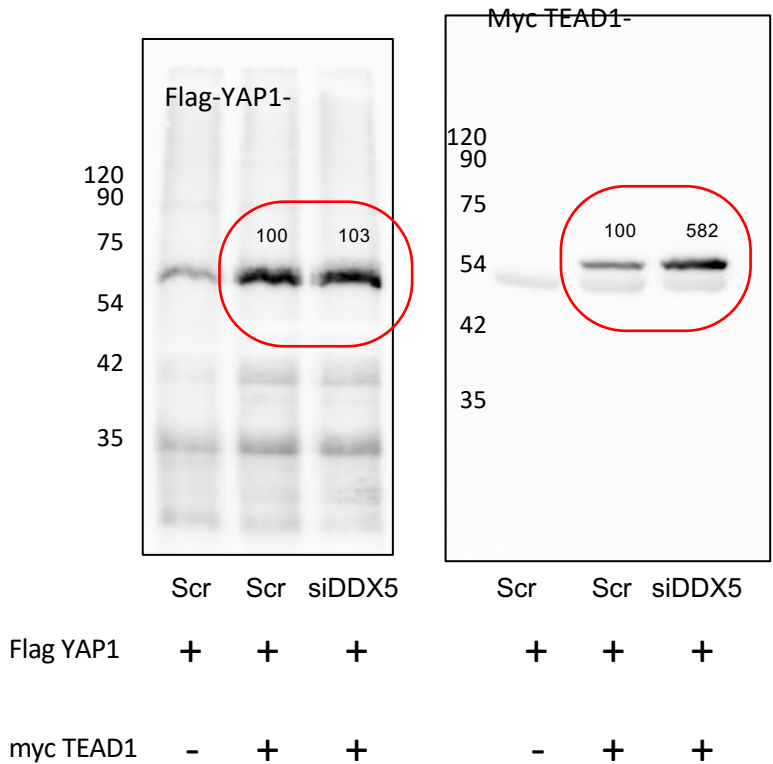


Figure 6A

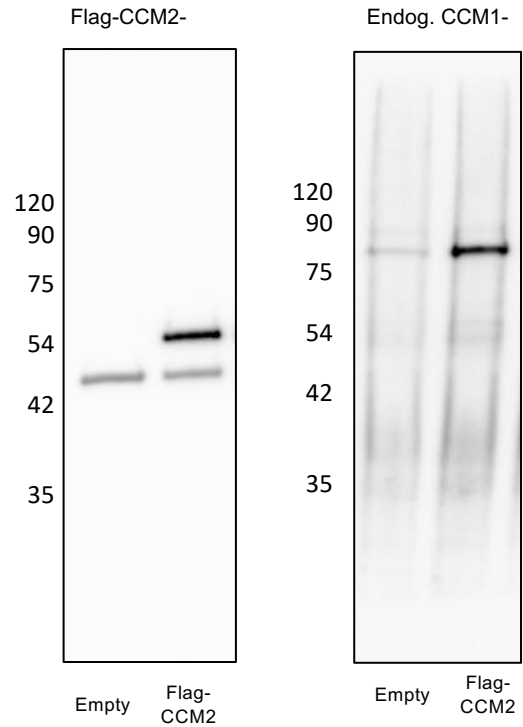


Figure 6B

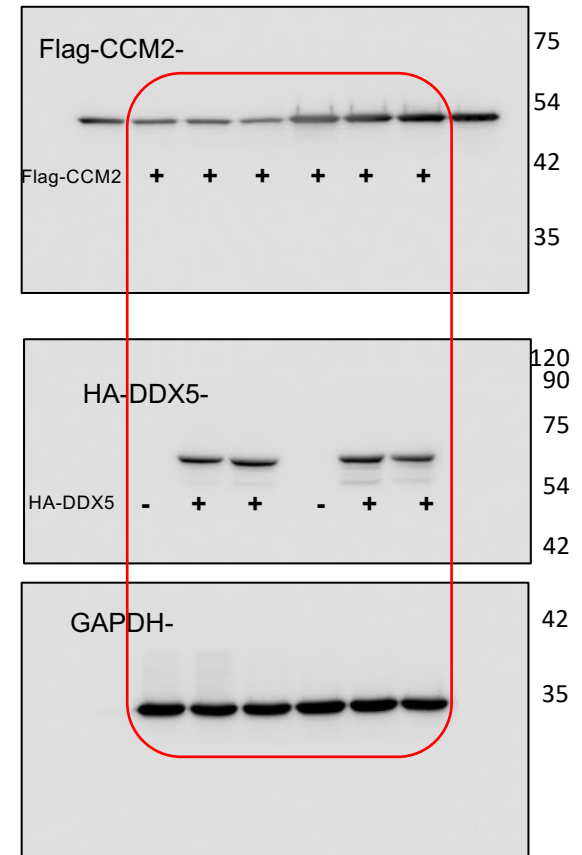
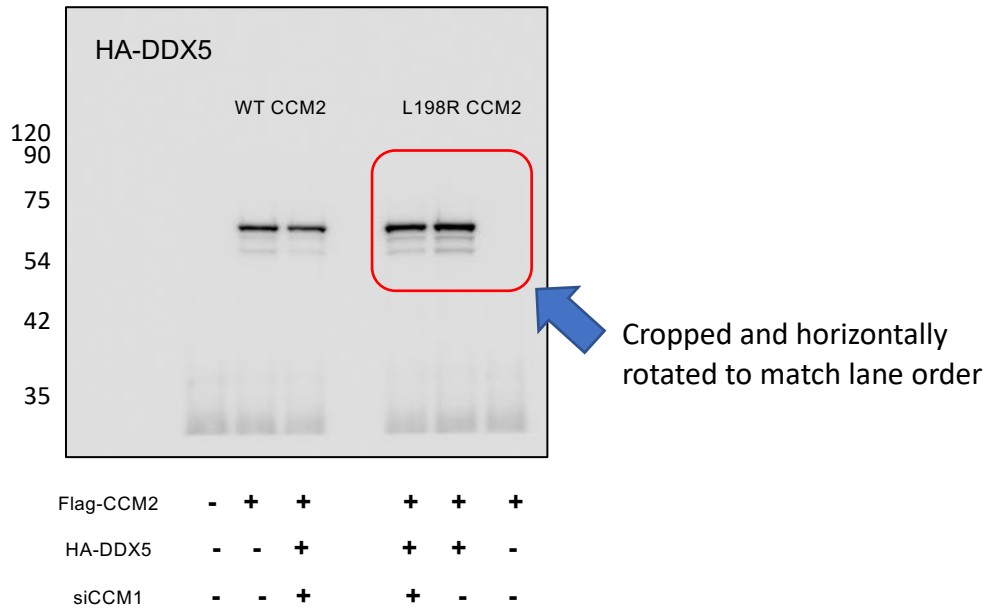
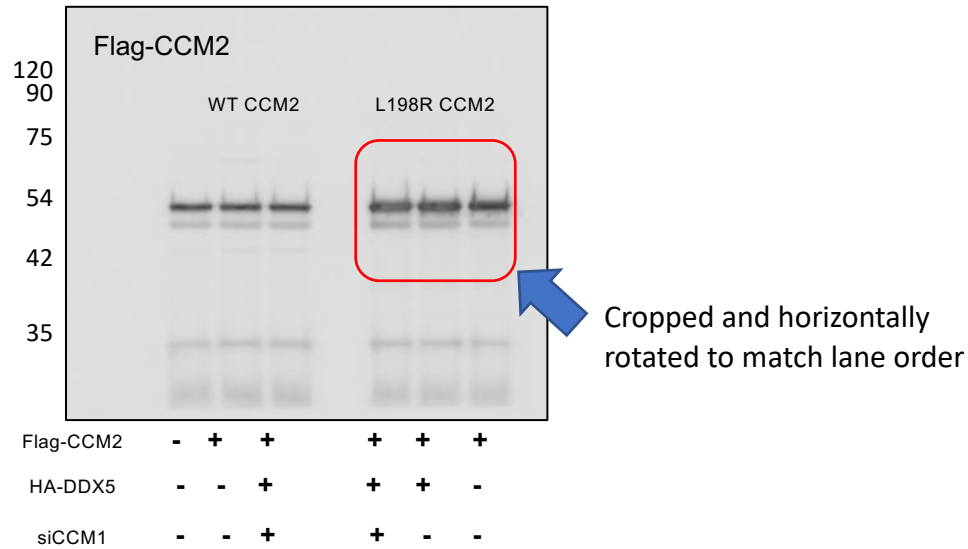


Figure 6C

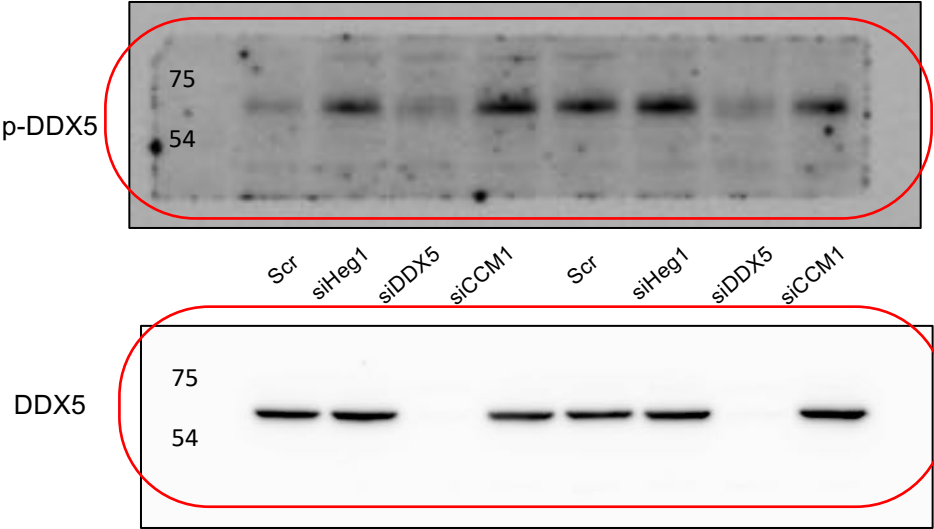


Figure 6D

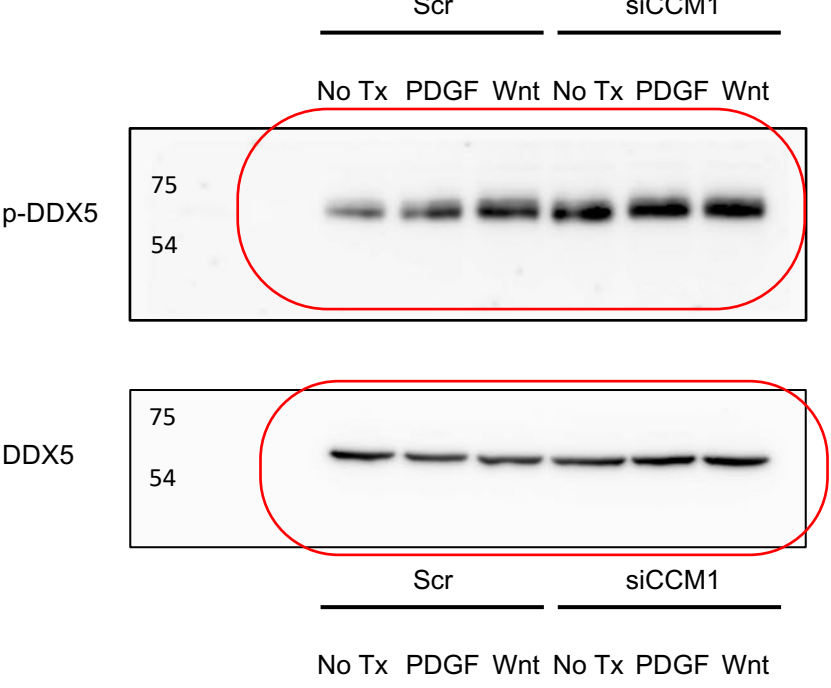
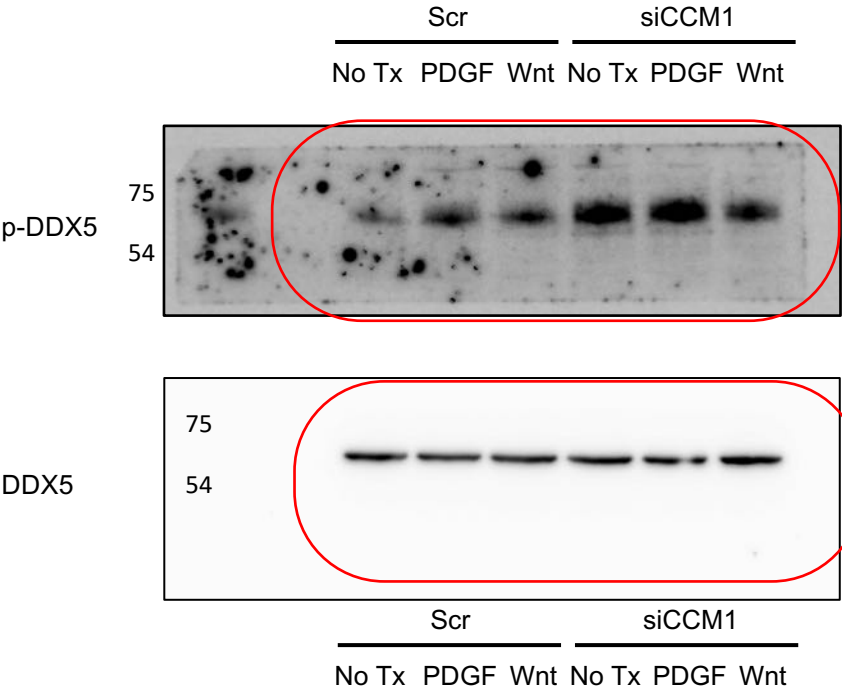


Figure S3B

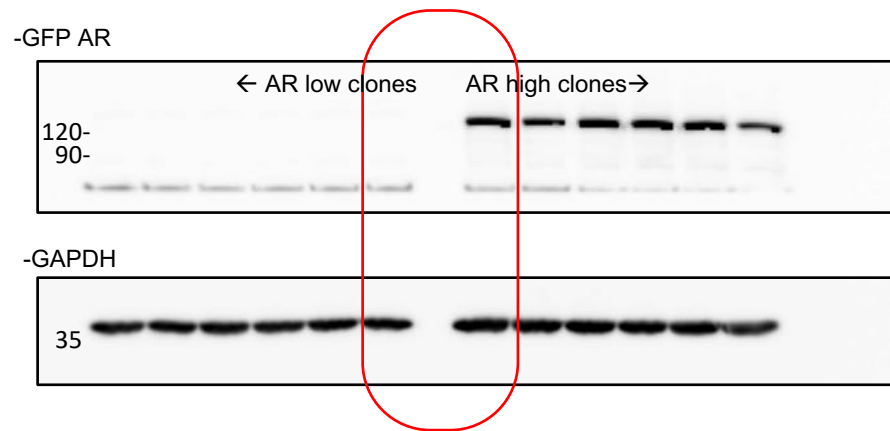


Figure S5C

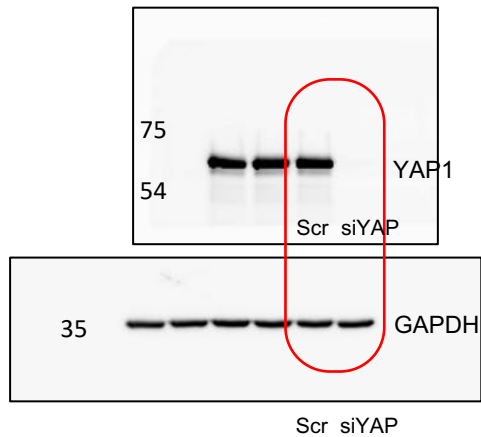


Figure S5D

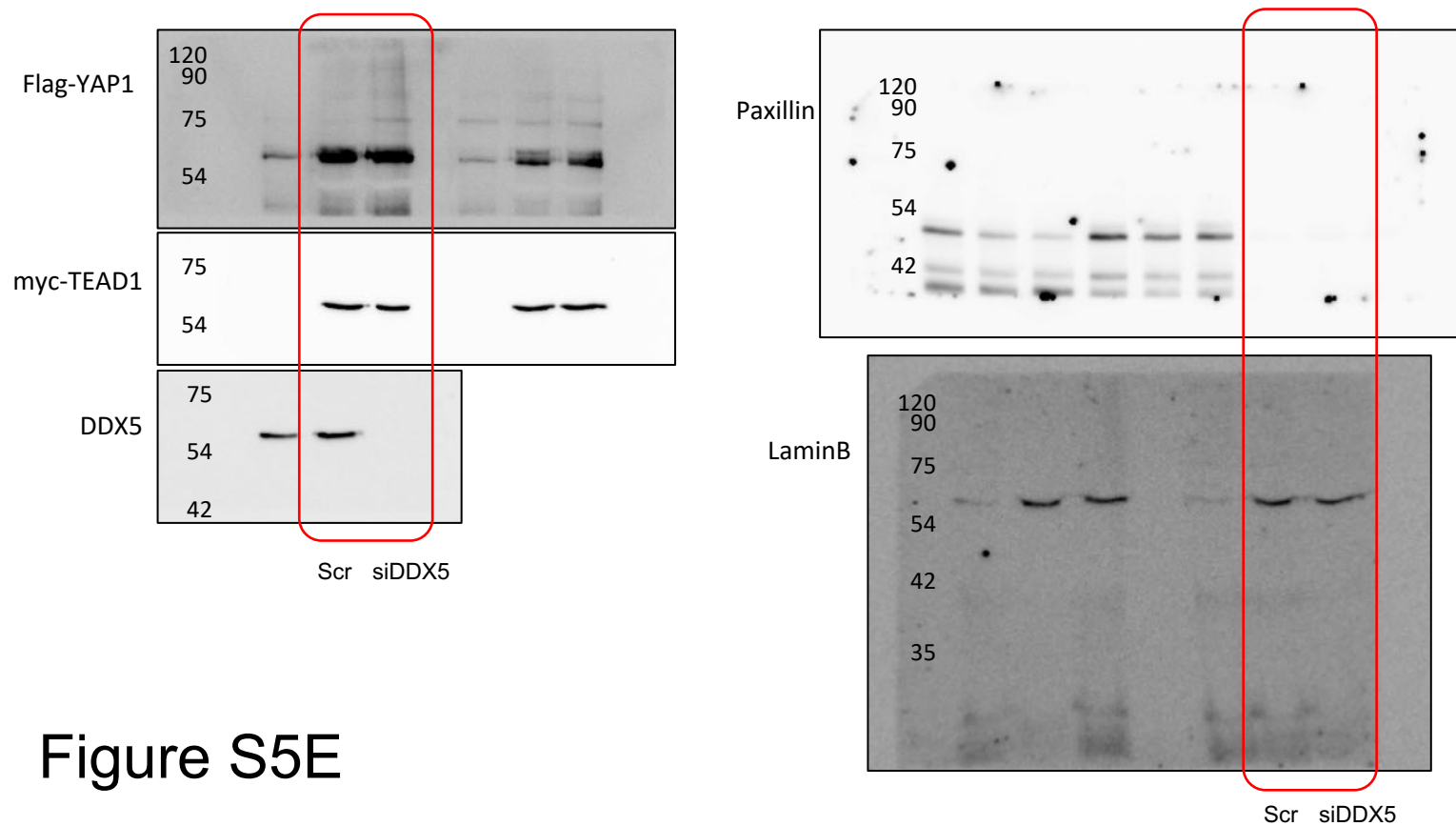


Figure S5E

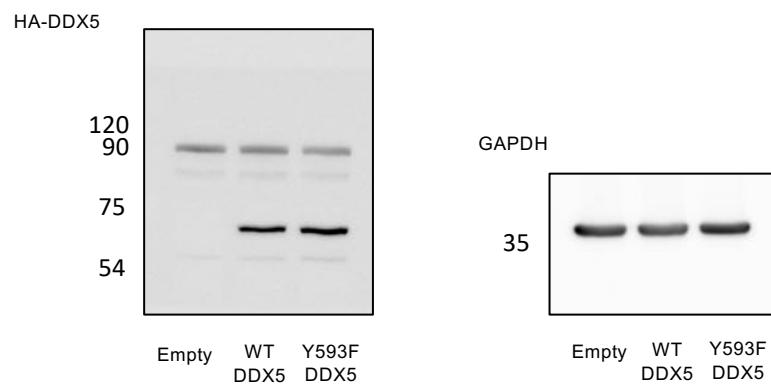


Figure S5G

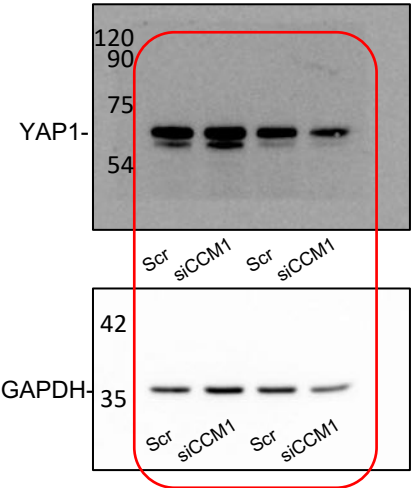


Figure S5J

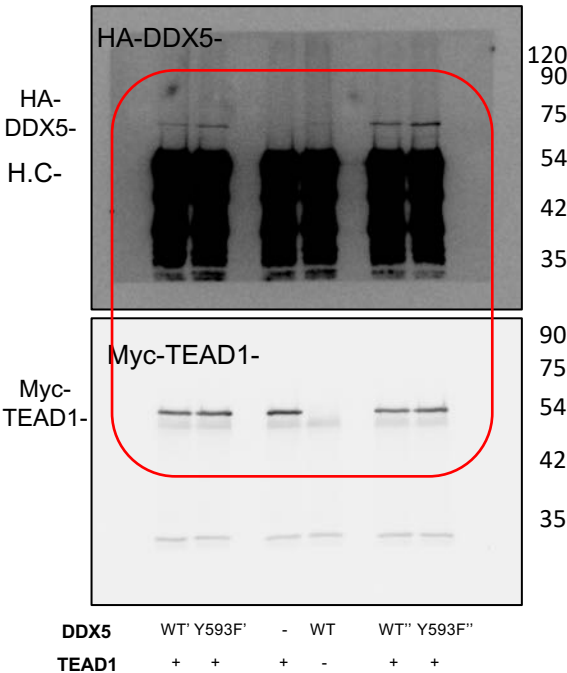


Figure S5H

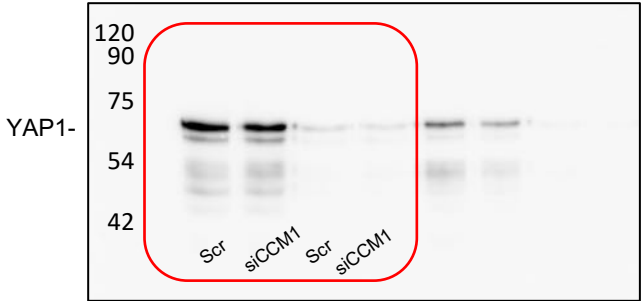


Figure S5I

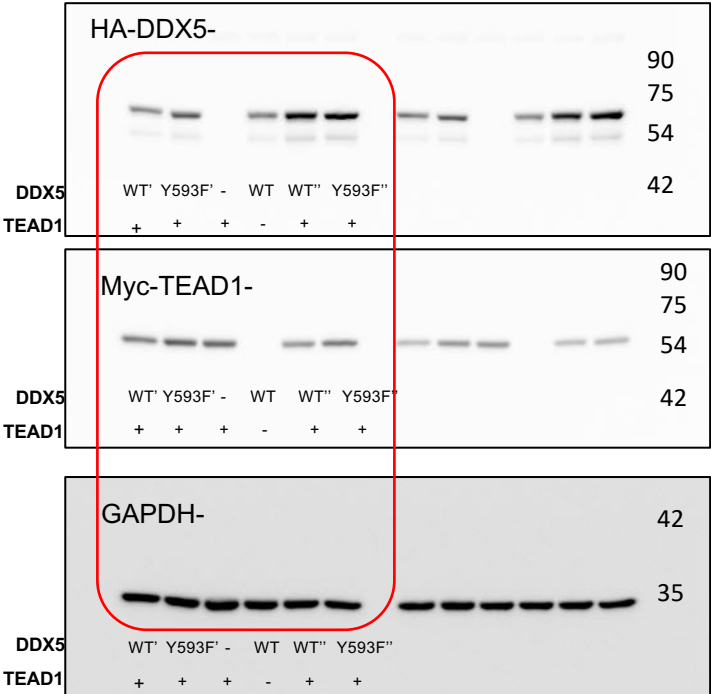
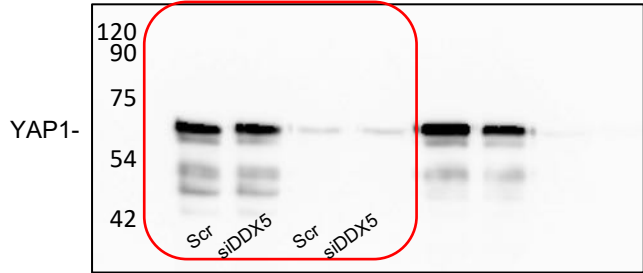


Figure S5K

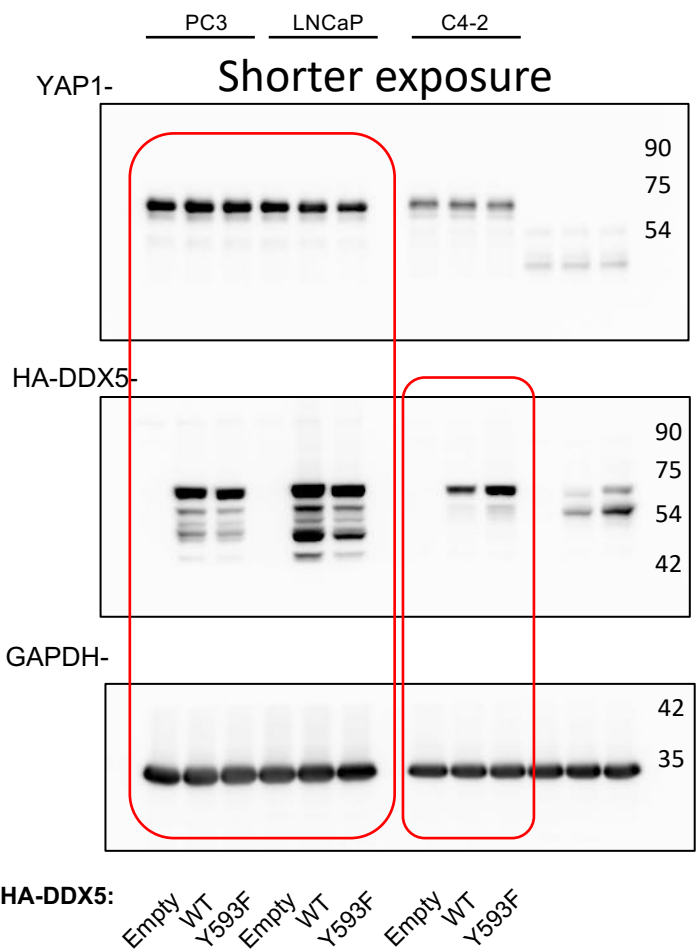


Figure S5L

