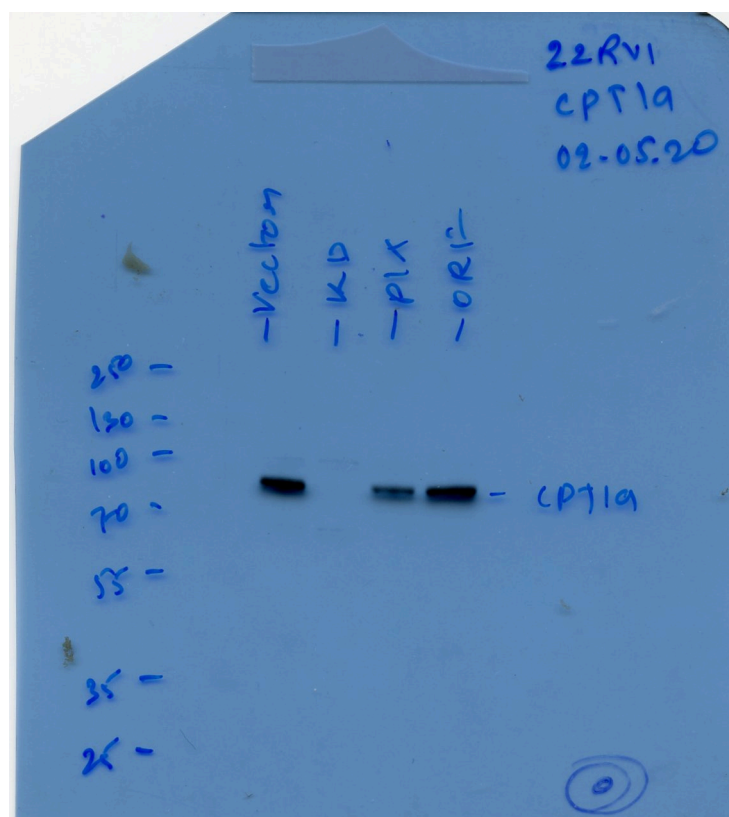
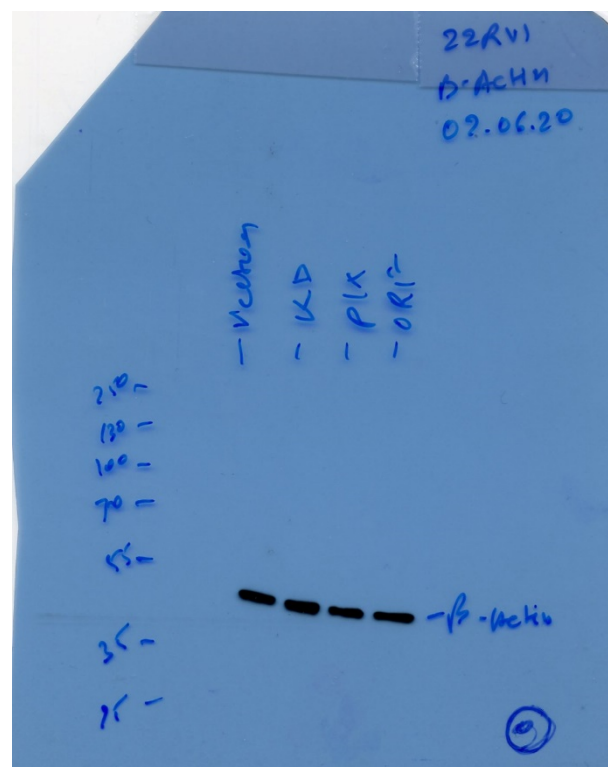


Carnitine Palmitoyltransferase 1 Regulates Prostate Cancer Growth under Hypoxia

Leslimar Rios-Colon, Pawan Kumar, Susy Kim, Mitu Sharma, Yixin Su, Ashish Kumar, Sangeeta Singh, Nalexus Stocks, Liang Liu, Molishree Joshi, Isabel R. Schlaepfer, Deepak Kumar and Gagan Deep

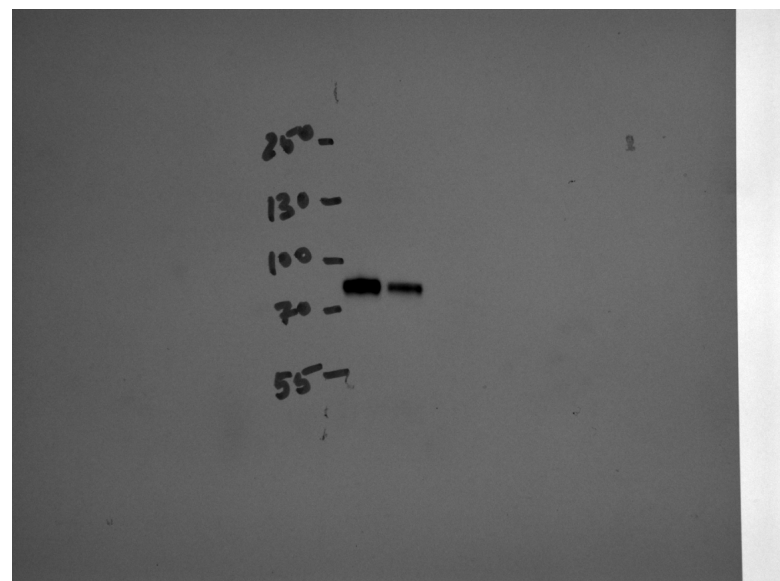


22Rv1 cells(VC,KD, PLX and ORF)- CPT1A
Data shown in Figure 1A, left panel

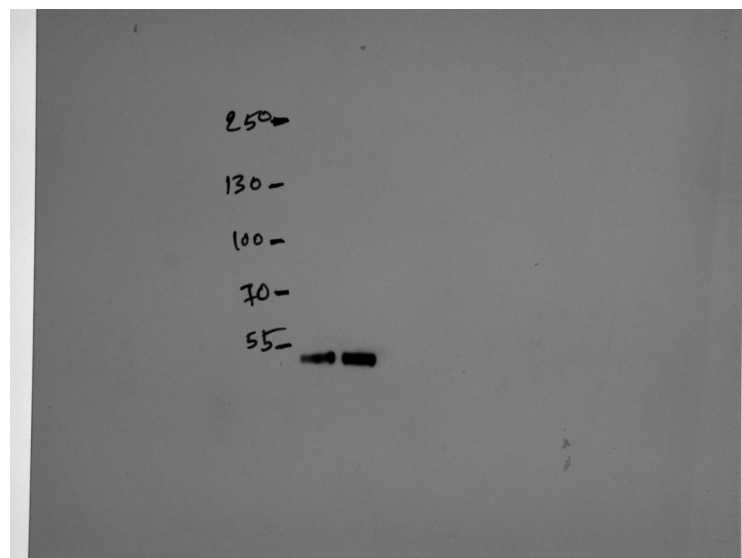


22Rv1 cells(VC,KD, PLX and ORF)- β -actin
Data shown in Figure 1A- left panel

Figure S1: Full blots for Figure 1A- left panel.



MDA-PCa-2b cells (VC and KD)- CPT1A
Data shown in Figure 1A- right panel

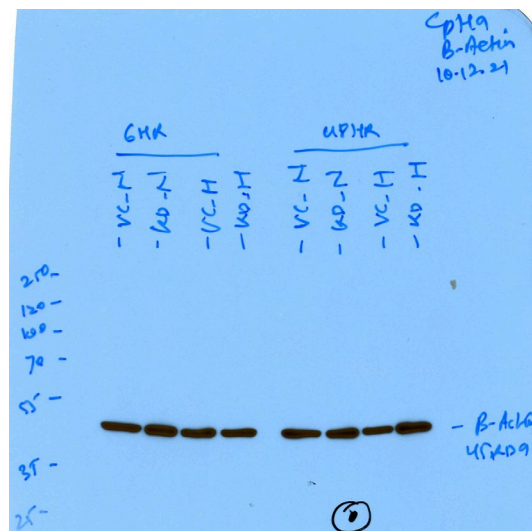


MDA-PCa-2b cells(VC and KD)- α tubulin
Data shown in Figure 1A- right panel

Figure S2. Full blots for Figure 1A- right panel.



22Rv1 cells(VC and KD)- CPT1A
Data shown in Figure 1B



22Rv1 cells(VC and KD)- β-actin
Data shown in Figure 1B

Figure S3. Full blots for Figure 1B.

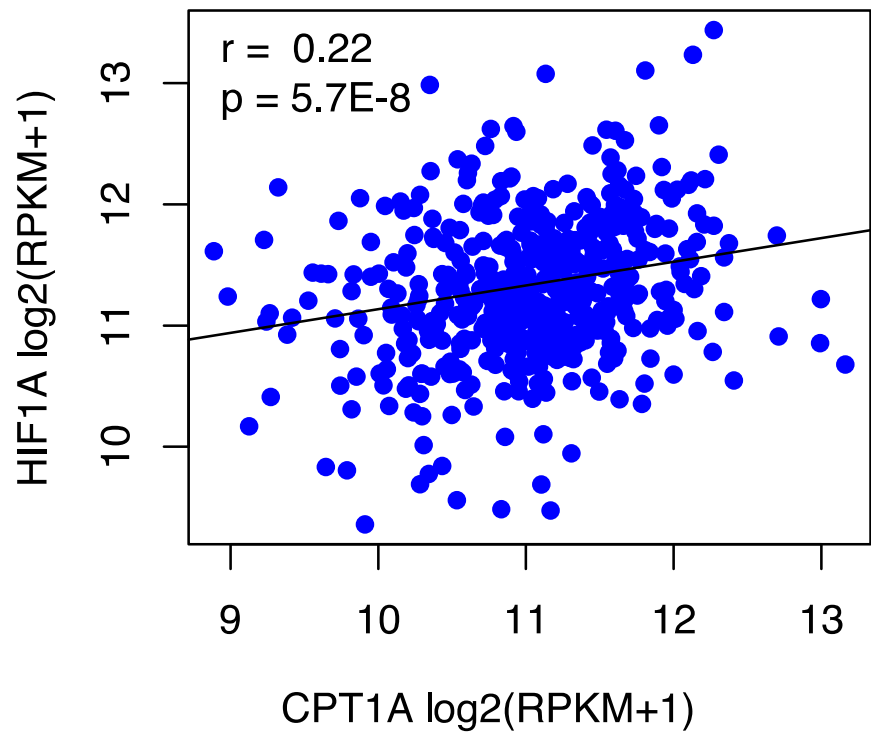


Figure S4. Correlation between CPT1A and HIF1A expression in the TCGA PRAD cohort.