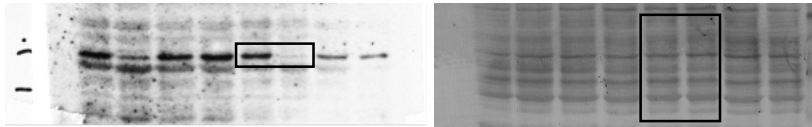


## **“Original Images for Blots/Gels”**

---

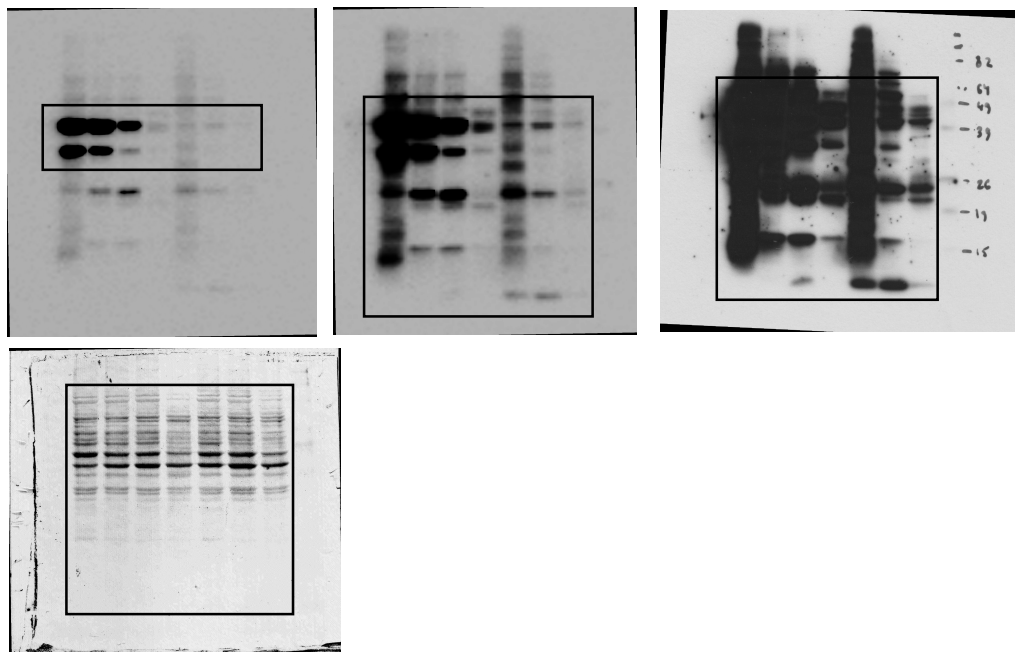
**Fig. 2B → CAD and loading control (naphthol blue):**

**Lanes from left to right inside the squared area:** non-relevant (NR) and human CAD (hCAD) siRNA LN18-transfected cells.



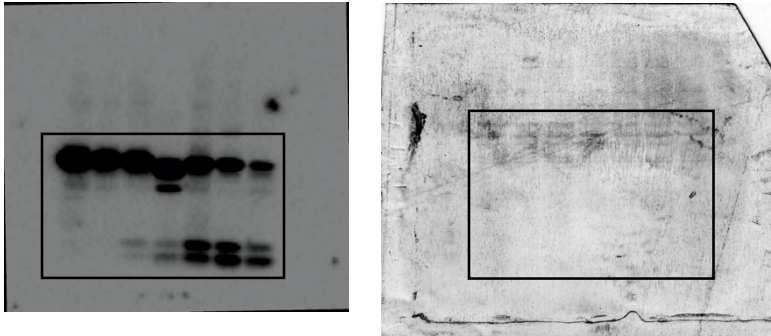
**Fig. 2C → ICAD (short, middle and long exposures) and loading control (naphthol blue)**

**Lanes from left to right:** Untreated (UT), gossypol (GSP) 6 hours, GSP 9 hours, GSP 12 hours, staurosporine (STP) 6 hours, STP 9 hours, STP 12 hours.



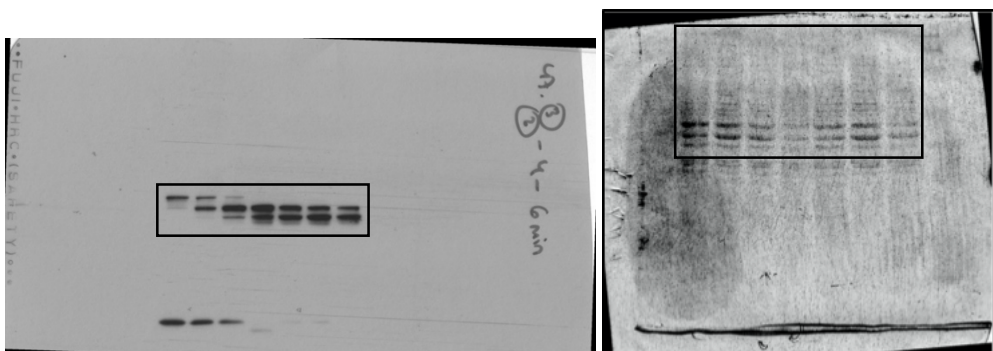
**Fig. 2D → Caspase-3 (short, middle and long exposures) and loading control (naphthol blue):**

**Lanes from left to right:** Untreated (UT), gossypol (GSP) 6 hours, GSP 9 hours, GSP 12 hours, staurosporine (STP) 6 hours, STP 9 hours, STP 12 hours.



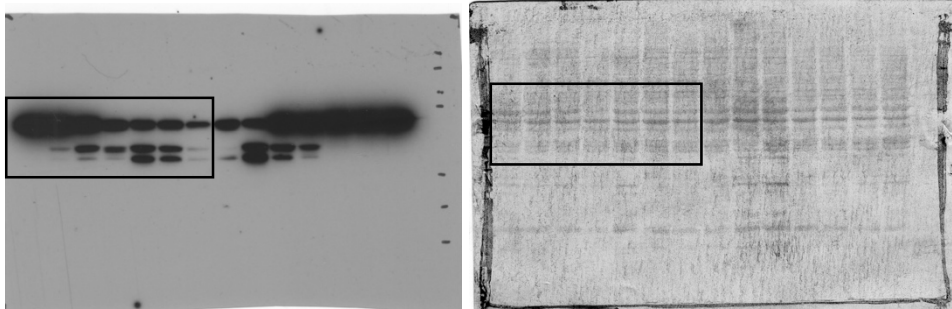
**Fig. 2D → Fodrin and loading control (naphthol blue):**

**Lanes from left to right inside the squared area:** Untreated (UT), gossypol (GSP) 6 hours, GSP 9 hours, GSP 12 hours, staurosporine (STP) 6 hours, STP 9 hours, STP 12 hours.



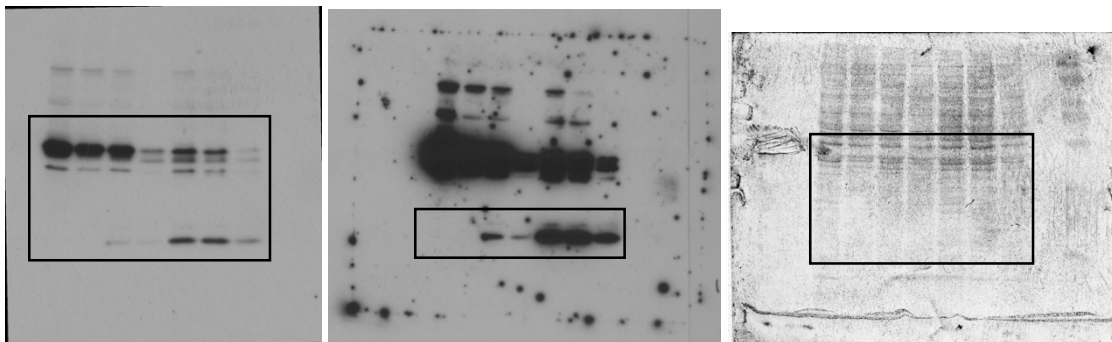
**Fig. 3A → Caspase-9 and loading control (naphthol blue):**

**Lanes from left to right inside the squared area:** Untreated (UT), gossypol (GSP) 6 hours, GSP 9 hours, GSP 12 hours, staurosporine (STP) 6 hours, STP 9 hours, STP 12 hours.



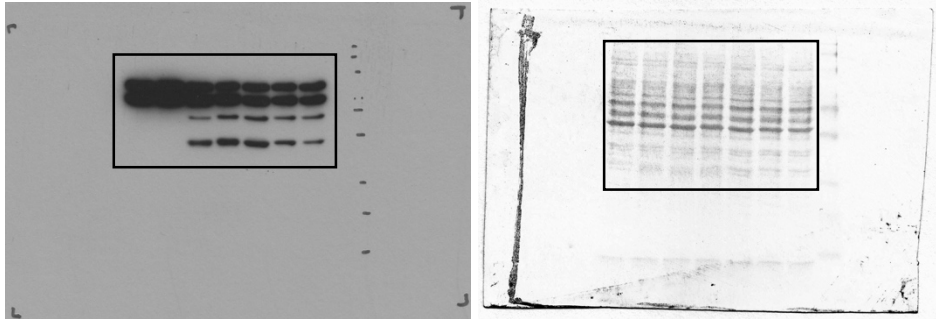
**Fig. 3A → Caspase-6 (short and long exposures) and loading control (naphthol blue):**

**Lanes from left to right:** Untreated (UT), gossypol (GSP) 6 hours, GSP 9 hours, GSP 12 hours, staurosporine (STP) 6 hours, STP 9 hours, STP 12 hours.



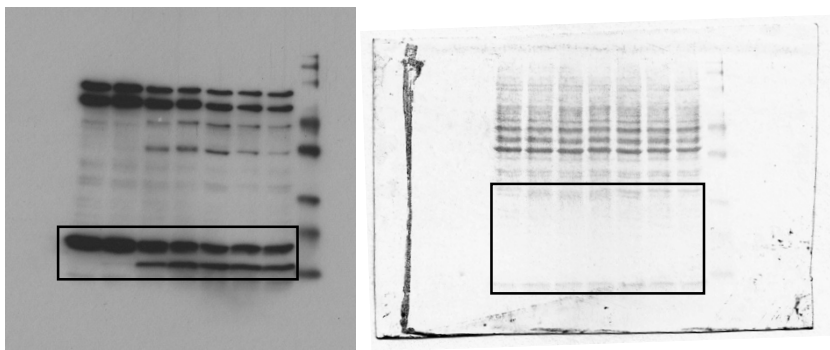
**Fig. 3A → Lamin A/C and loading control (naphthol blue):**

**Lanes from left to right:** Untreated (UT), gossypol (GSP) 6 hours, GSP 9 hours, GSP 12 hours, staurosporine (STP) 6 hours, STP 9 hours, STP 12 hours.



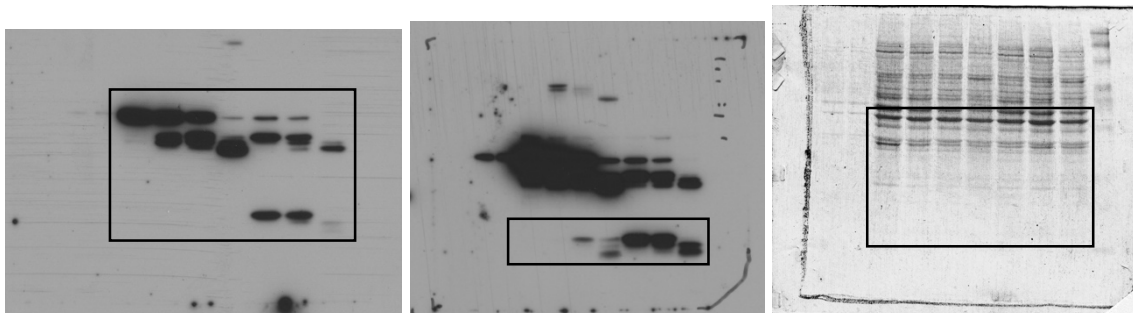
**Fig. 3A → p23 and loading control (naphthol blue):**

**Lanes from left to right:** Untreated (UT), gossypol (GSP) 6 hours, GSP 9 hours, GSP 12 hours, staurosporine (STP) 6 hours, STP 9 hours, STP 12 hours.



**Fig. 3A → Caspase-7 (short and long exposures) and loading control (naphthol blue):**

**Lanes from left to right:** Untreated (UT), gossypol (GSP) 6 hours, GSP 9 hours, GSP 12 hours, staurosporine (STP) 6 hours, STP 9 hours, STP 12 hours.

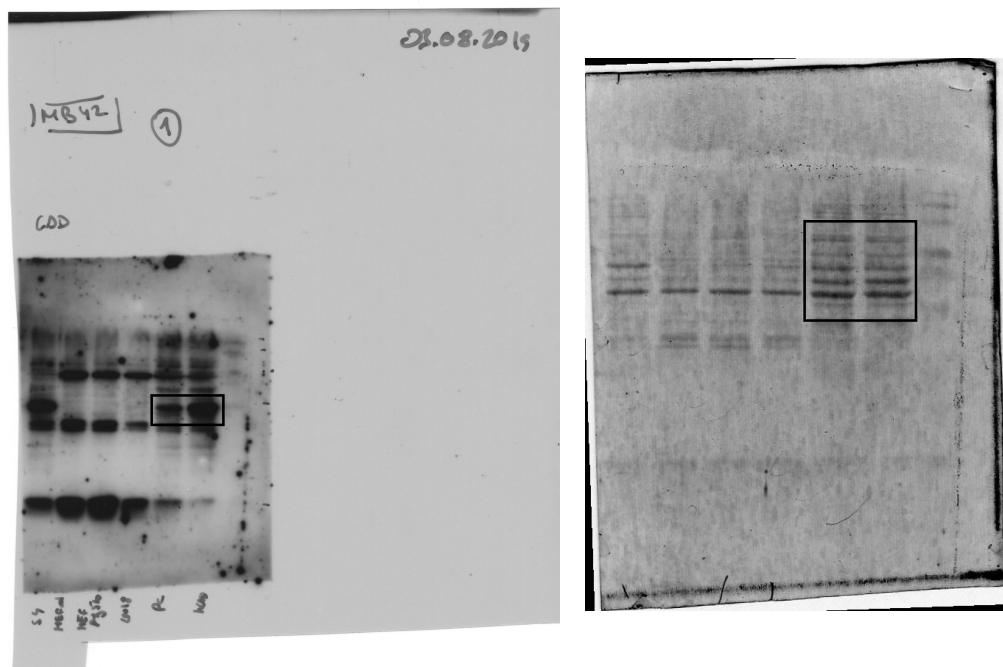




## Supplementary Figures

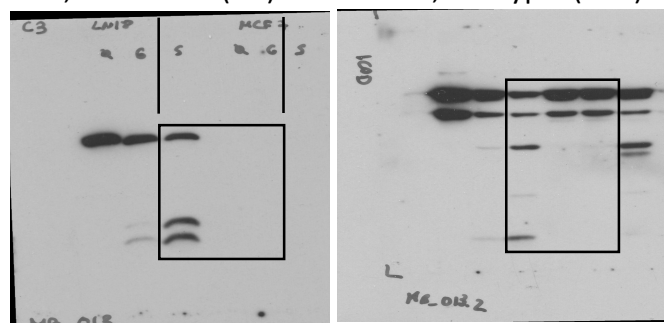
### Figure S2 → CAD and loading control (naphthol blue):

Lanes from left to right inside the squared area: LN18 pcDNA3 cells, LN18 pcDNA3/hCAD overexpressing cells.



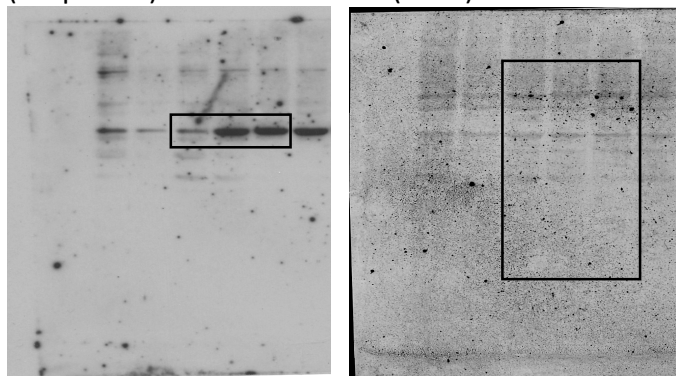
### Figure S3 → Caspase-3, ICAD, CAD and loading control (naphthol blue):

Lanes from left to right inside the squared area: staurosporine (STP) LN-18 treated cells, Untreated (UT) MCF-7 cells, Gossypol (GSP) MCF-7 cells



(Caspase-3)

(ICAD)



(CAD)

(Loading control)