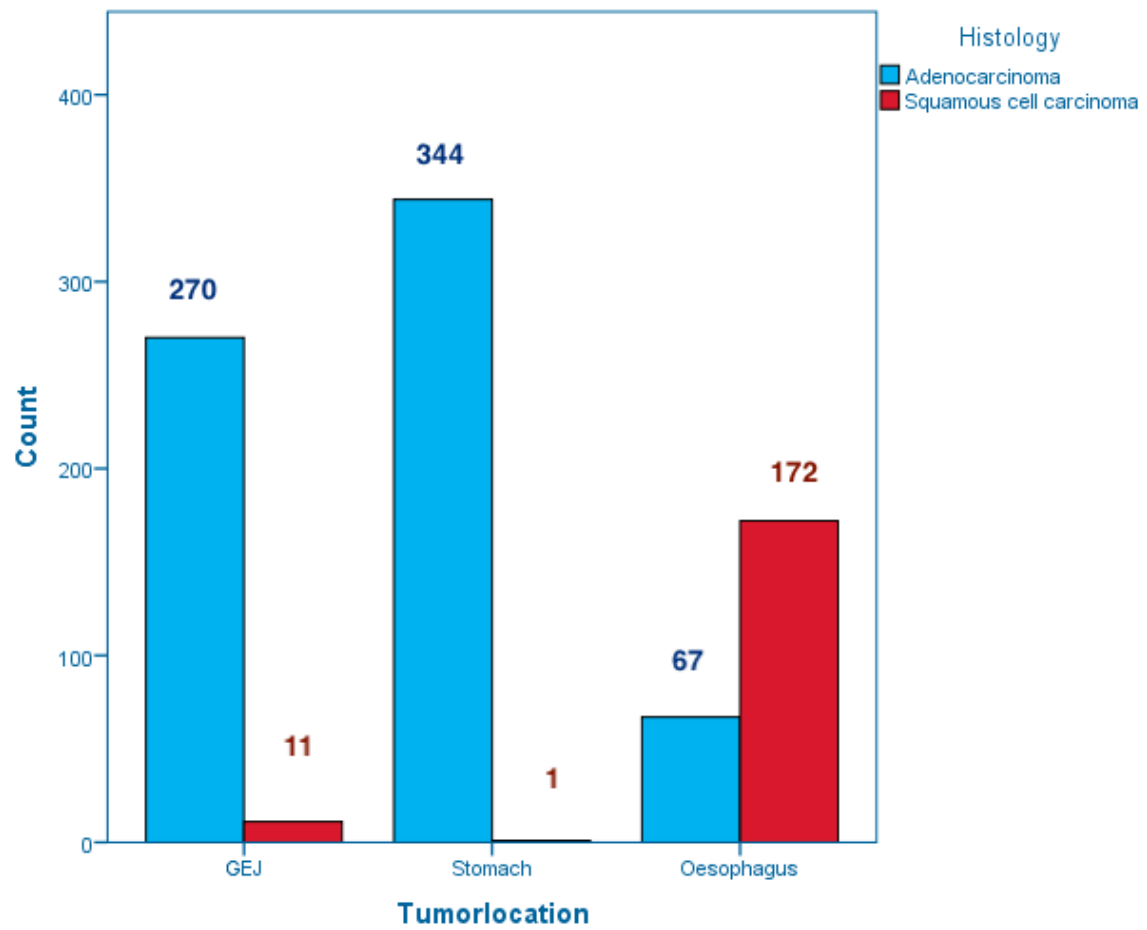
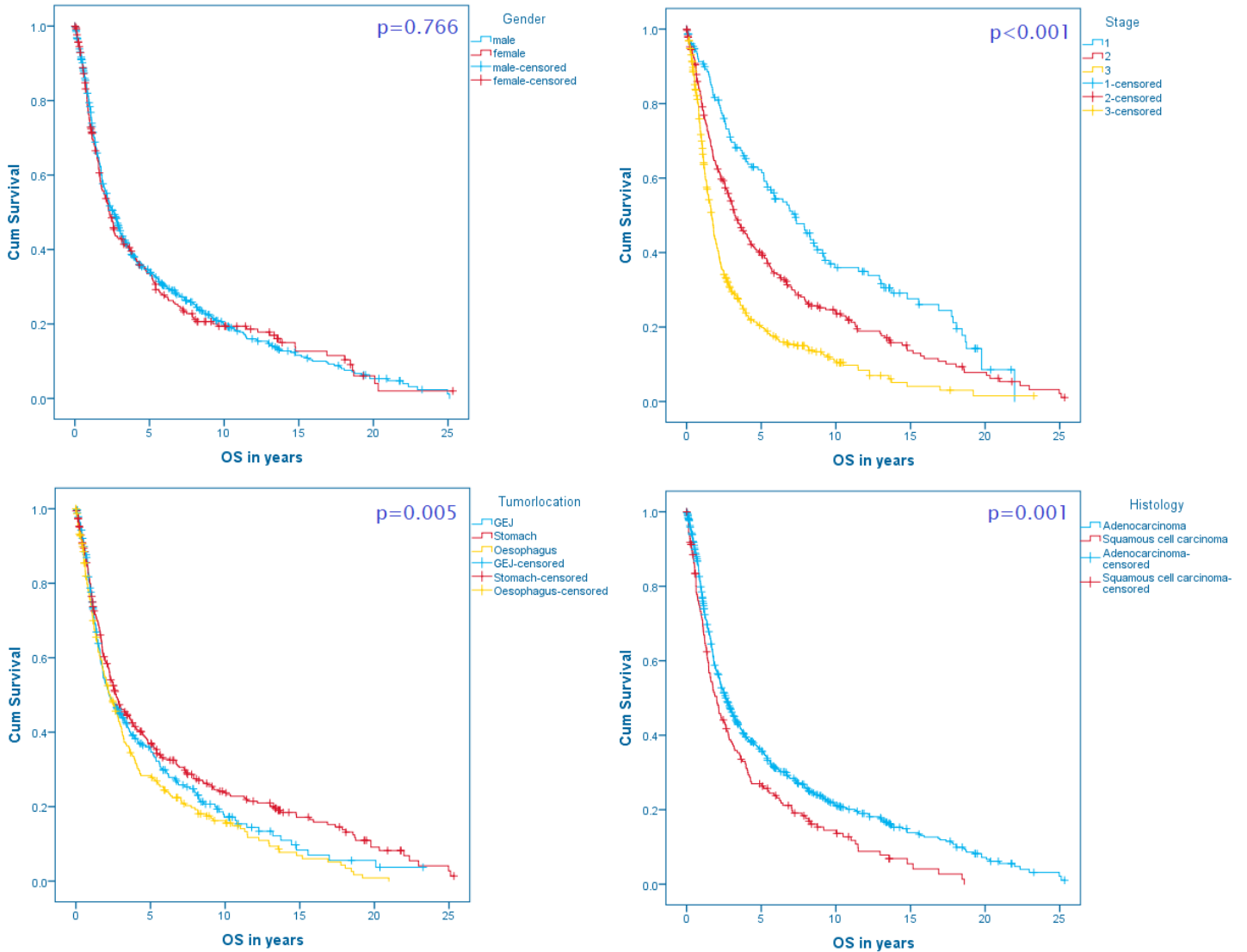


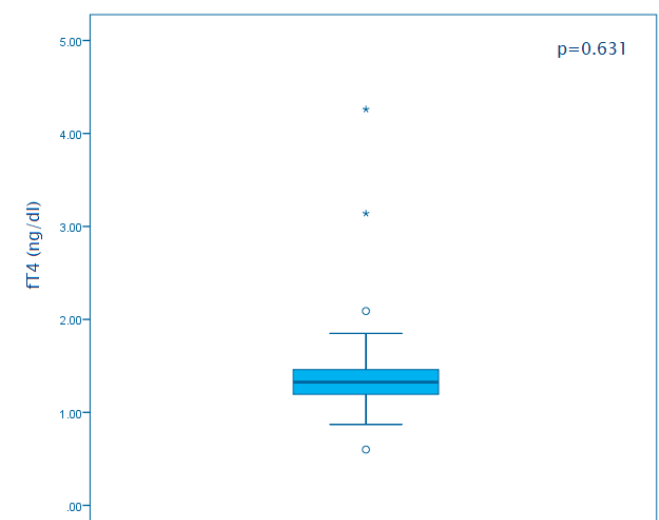
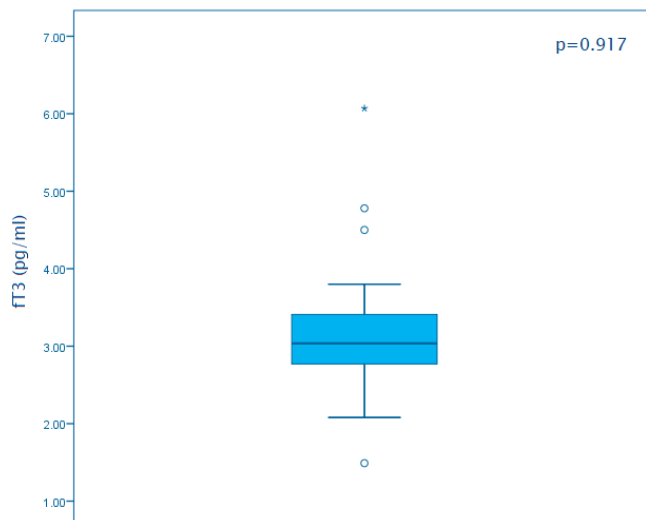
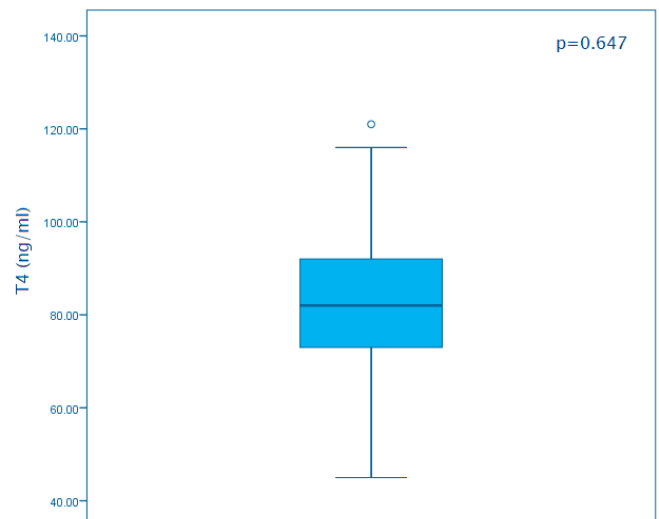
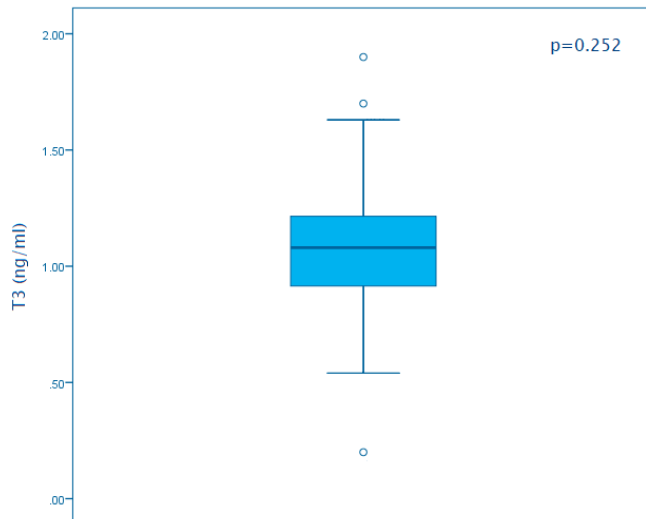
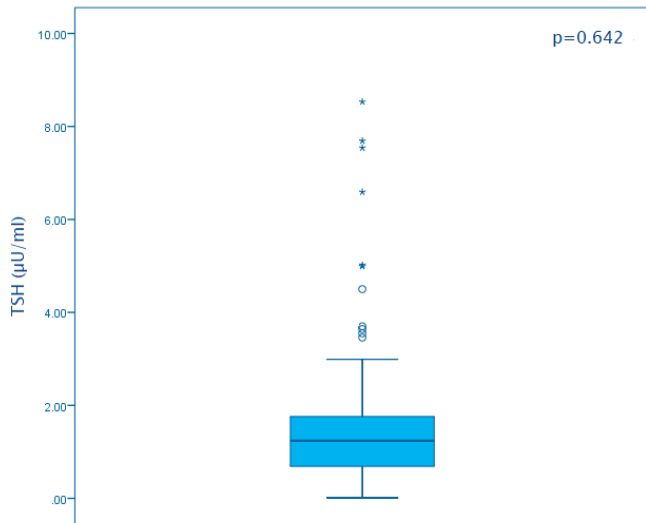
**Supplementary Figure S1:** Tumor location and histological subtype.  
GEJ=gastroesophageal junction



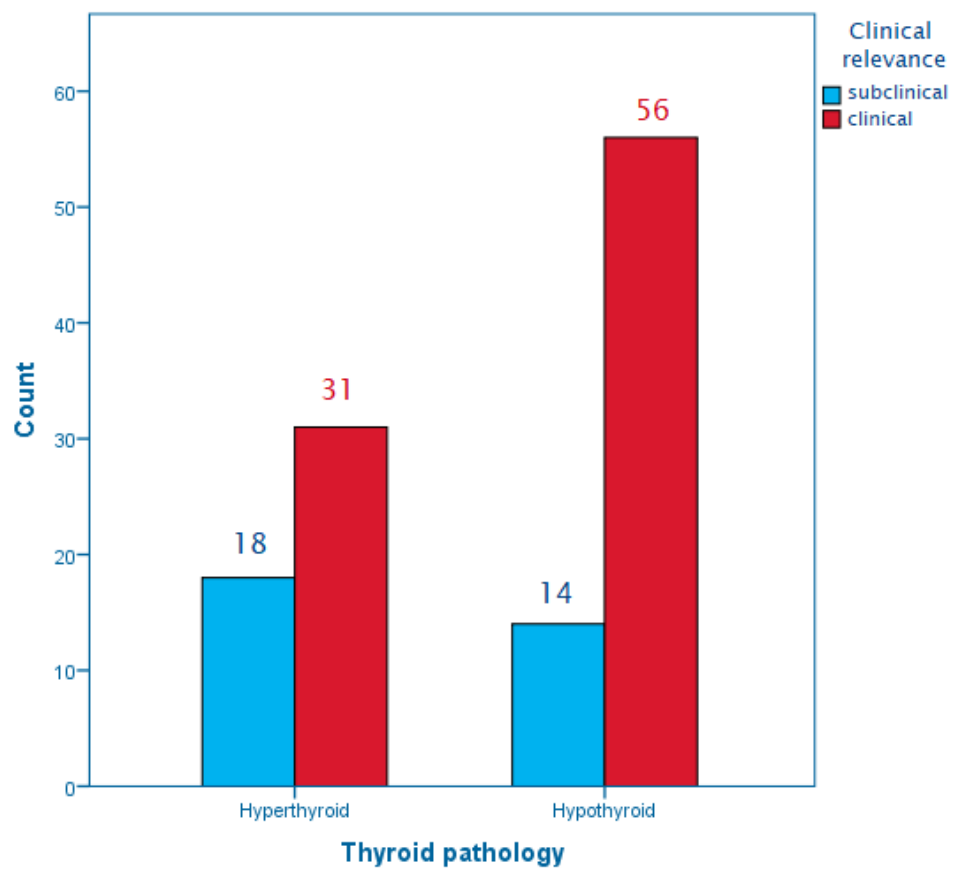
**Supplementary Figure S2: Kaplan Meier curves of demographic and cancer specific characteristics**



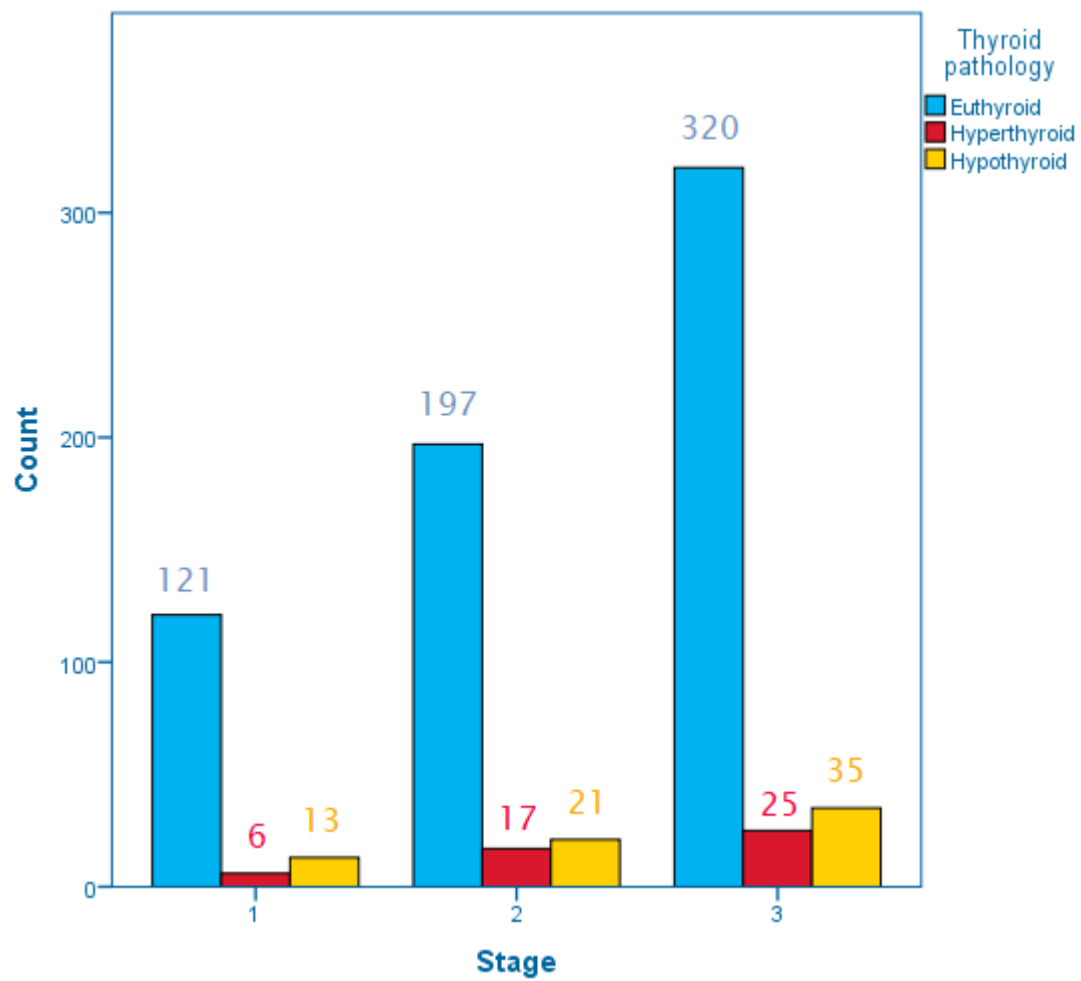
**Supplementary Figure S3: Boxplots of thyroid hormones in the overall cohort**



**Supplementary Figure S4: Clinical relevance of thyroid disorders**



**Supplementary Figure S5:** Thyroid disorders regarding tumor stages.



**Supplementary Table S1:** Missing endocrinological values

Characteristic	Data available	Data missing
<b>TSH</b> (μU/ml)		
n (%)	209 (24.2%)	656 (75.9%)
<b>T3</b> (ng/ml)		
n (%)	60 (6.9%)	805 (93.1%)
<b>T4</b> (ng/ml)		
n (%)	89 (10.3%)	776 (89.7%)
<b>fT3</b> (pg/ml)		
n (%)	38 (4.4%)	827 (95.6%)
<b>fT4</b> (ng/dl)		
n (%)	80 (9.2%)	785 (90.8%)
<b>Thyroid pathology</b>		
n (%)	767 (88.7%)	98 (11.3%)