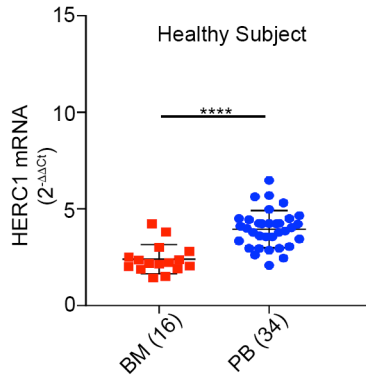
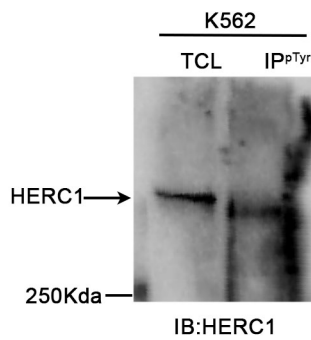


**Figure S1**



**The *HERC1* gene expression is differently regulated in healthy BM and PB.** The expression of the *HERC1* gene is differently regulated in healthy blood specimens. PB samples exhibited higher *HERC1* amount (median=4.0) when compared to the BM (median=2.2).

**Figure S2**



**HERC1 is tyrosine phosphorylated in chronic myeloid leukemia K562 cells.** K562 lysates were immunoprecipitated by using anti phosphotyrosine (p-Tyr) antibody. Immunocomplex was subsequently resolved by SDS-PAGE, transferred onto PVDF membranes and eventually probed with HERC1 antibody. The presence of HERC1 band indicated that in K562 cells HERC1 is tyrosine-phosphorylated.