

SUPPLEMENTARY MATERIAL

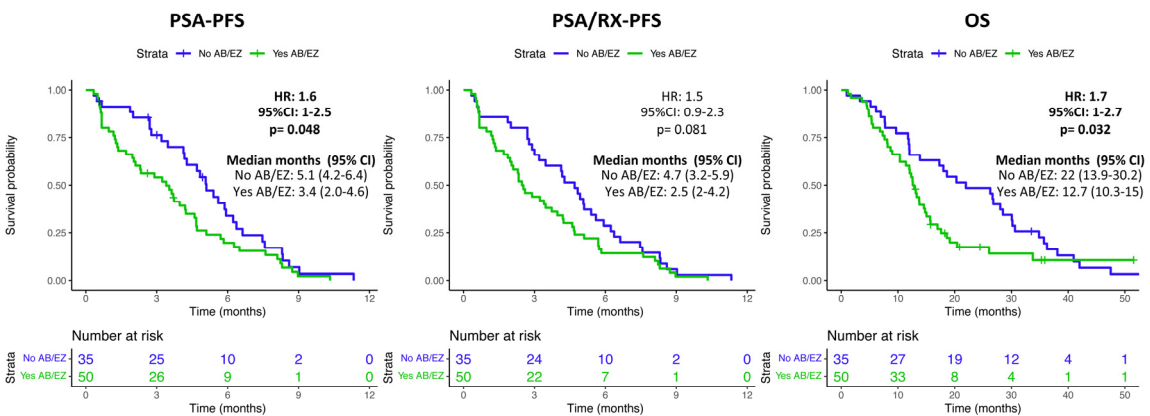


Figure S1 Effect of receiving abiraterone or enzalutamide prior to taxanes in clinical outcome. A) Kaplan-Meier curves representing PSA-PFS, PSA/RX-PFS, and OS according to whether patients received AB or EZ prior to taxanes. CI: confidence interval; HR: hazard ratio; AB: abiraterone; EZ: enzalutamide; Wald test (p).

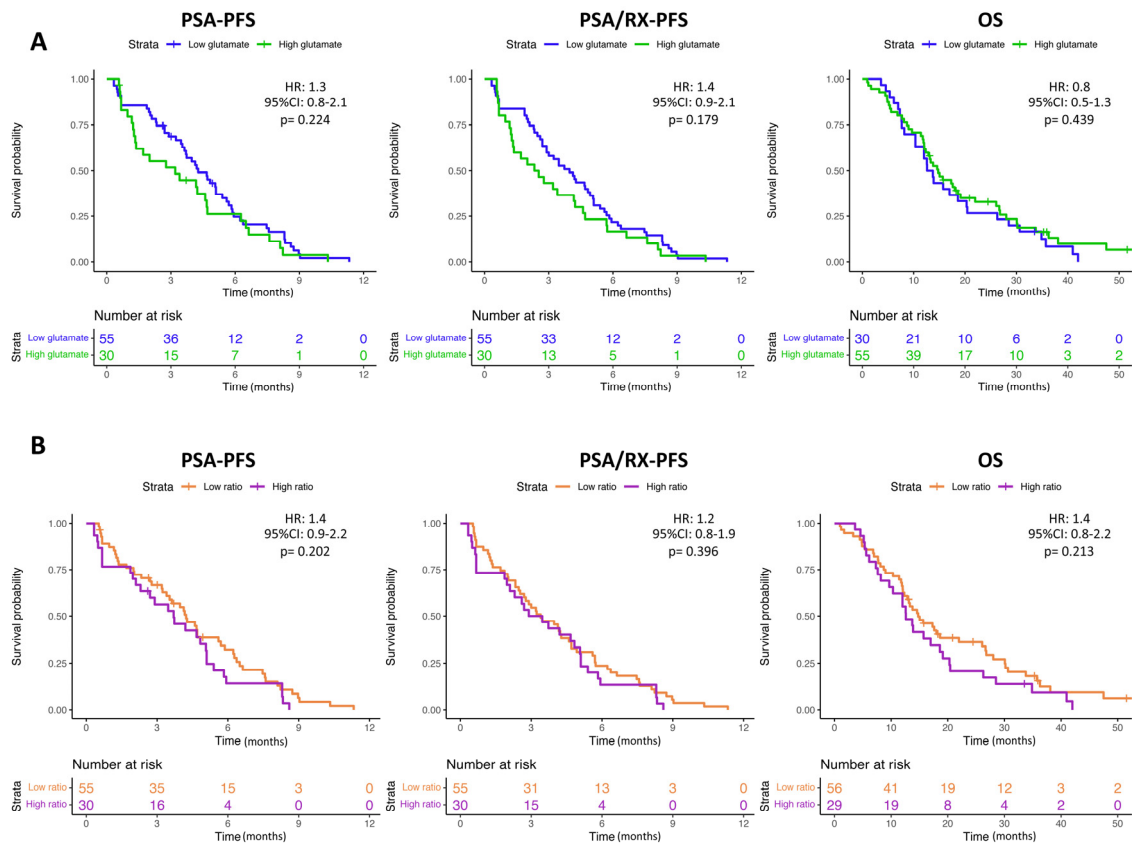


Figure S2 Glutamate and ratio glutamine/glutamate at plasma and clinical outcome. A) Kaplan-Meier curves representing PSA-PFS, PSA/RX-PFS, and OS according to glutamate levels; B) Kaplan-Meier curves representing PSA-PFS, PSA/RX-PFS, and OS according to the ratio glutamine/glutamate levels; CI: confidence interval; HR: hazard ratio; Wald test (p).

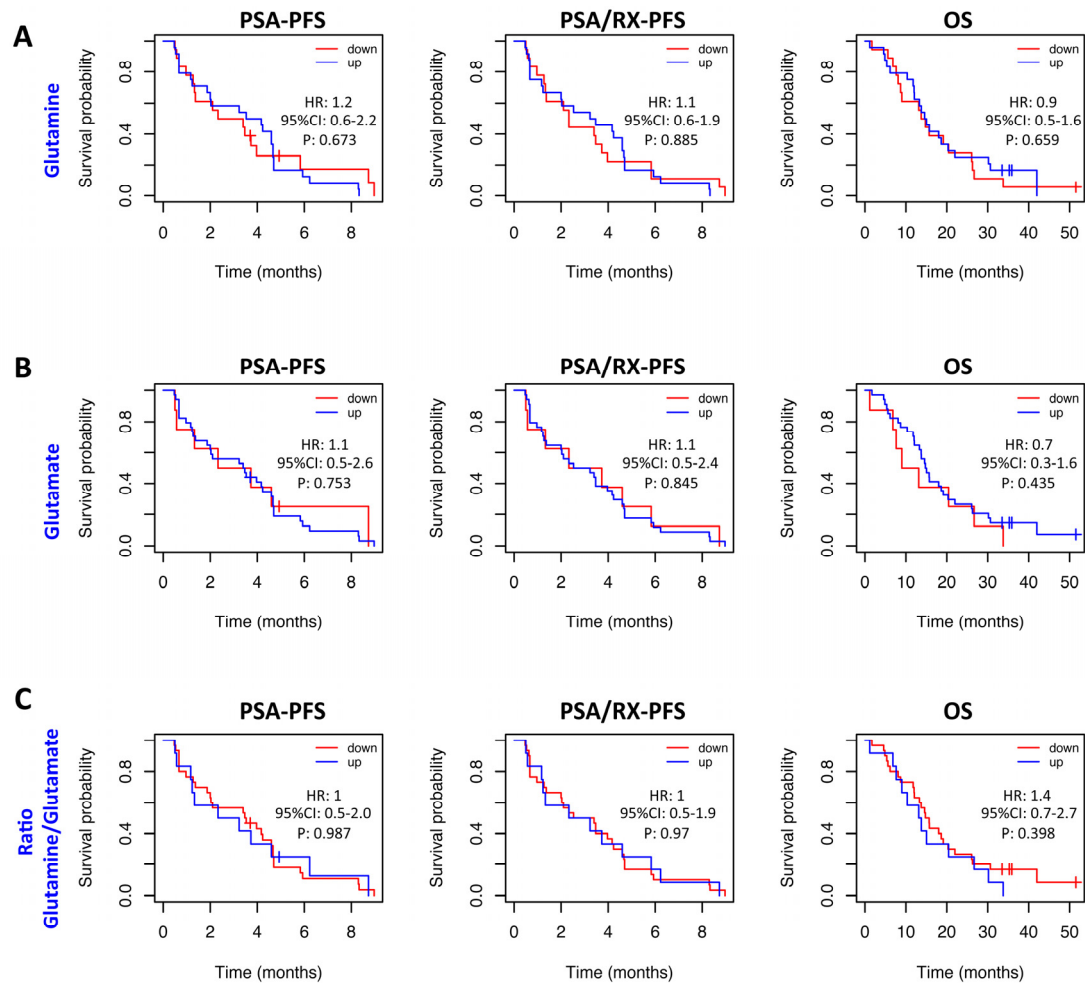


Figure S3 Changes of glutamine, glutamate and ratio glutamine/glutamate

levels at plasma before and after taxanes exposure and clinical outcome.

Patients whose levels after treatment went up and down were compared. A)

Kaplan-Meier curve representing PSA-PFS, PSA/RX-PFS and OS according to

changes in glutamine levels; B) Kaplan-Meier curve representing PSA-PFS,

PSA/RX-PFS and OS according to changes in glutamate levels; C) Kaplan-

Meier curve representing PSA-PFS, PSA/RX-PFS and OS according to

changes in the ratio glutamine/glutamate. CI: confidence interval; HR: hazard

ratio; Wald test (p).

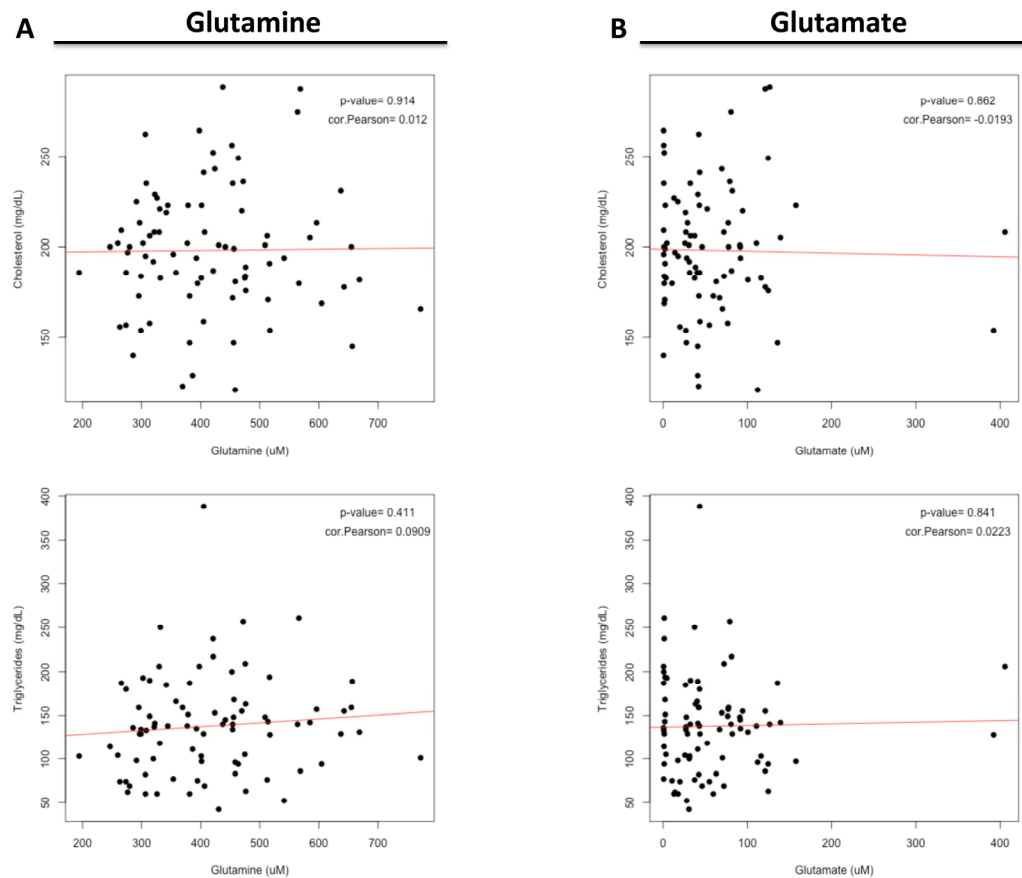


Figure S4 Correlation with lipids. A) Correlation graph between glutamine and cholesterol (up) and triglycerides (down); B) Correlation graph between glutamate and cholesterol (up) and triglycerides (down); Pearson coefficient (cor) and p-values are shown.

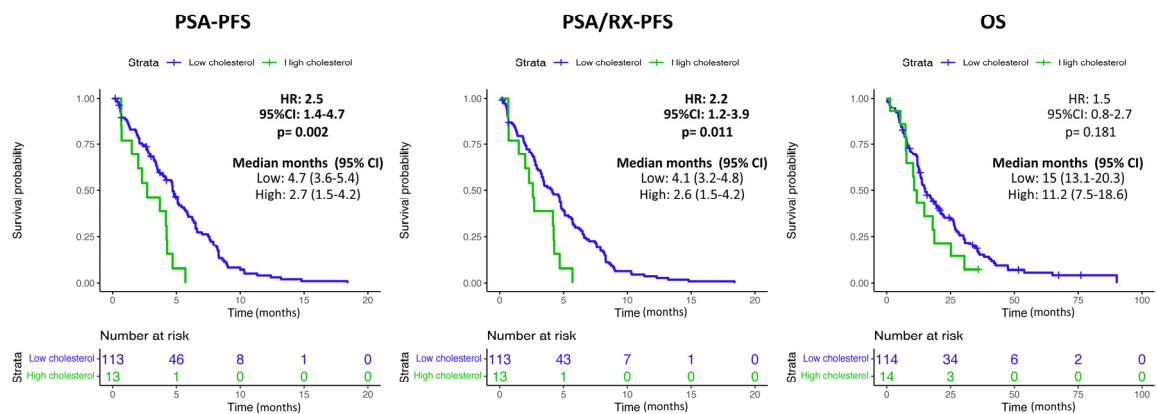


Figure S5 Cholesterol and clinical outcome in the global cohort. A) Kaplan-Meier curves representing PSA-PFS, PSA/RX-PFS, and OS according to cholesterol levels. Cut-off for cholesterol levels was the one used at routinely blood test analysis (247 mg/dL). CI: confidence interval; HR: hazard ratio; Wald test (p).

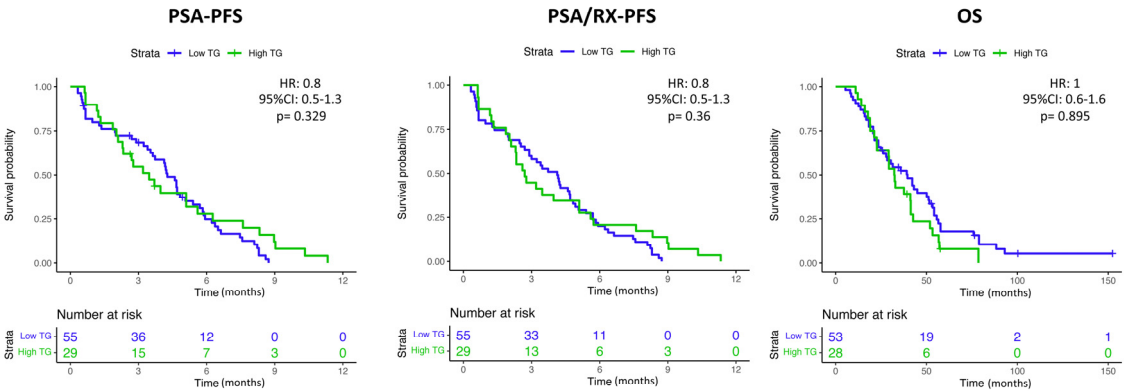


Figure S6 Triglycerides (TG) and clinical outcome. A) Kaplan-Meier curves representing PSA-PFS, PSA/RX-PFS, and OS according to TG levels. CI: confidence interval; HR: hazard ratio; Wald test (p).