

Supplementary materials

Targeted Sequencing Revealed Distinct Mutational Profiles of Ocular and Extraocular Sebaceous Carcinomas

Hee Young Na, Jeong Hwan Park, Sun Ah Shin, Sejoon Lee, Heonyi Lee, Heejoon Chae, HoKyung Choung, Namju Kim, Jin-Haeng Chung, Ji Eun Kim

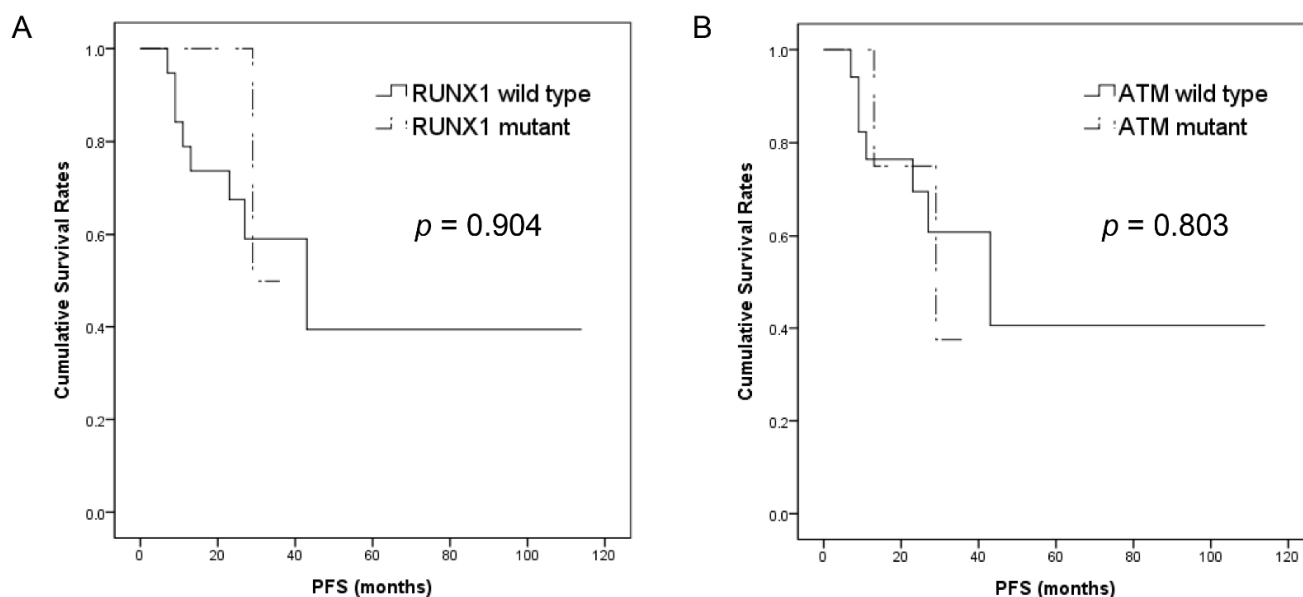


Figure S1. Kaplan–Meier analysis according to *RUNX1* and *ATM* mutation status. (A) *RUNX1* or (B) *ATM* mutation was not associated with shorter progression-free survival.

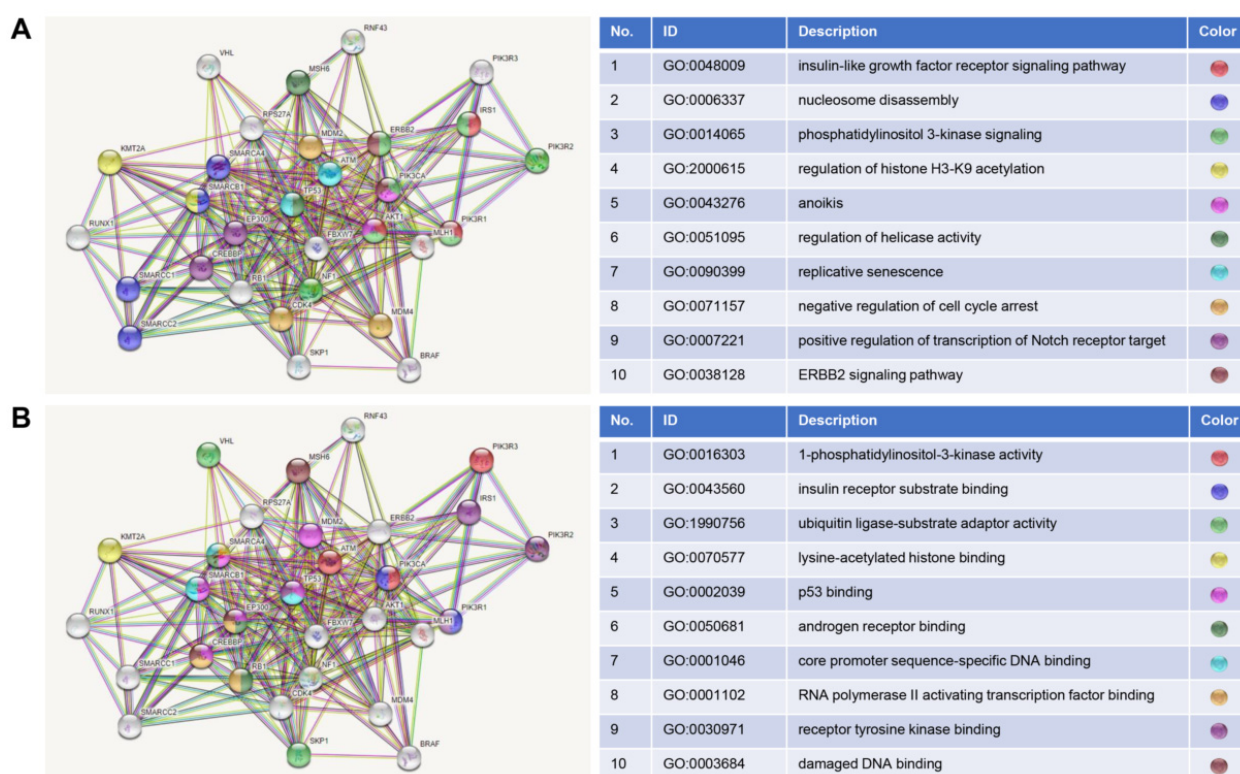


Figure S2: Gene ontology analysis in ocular sebaceous carcinoma. (A) Gene ontology analysis based on biologic process. (B) Gene ontology analysis based on molecular function.

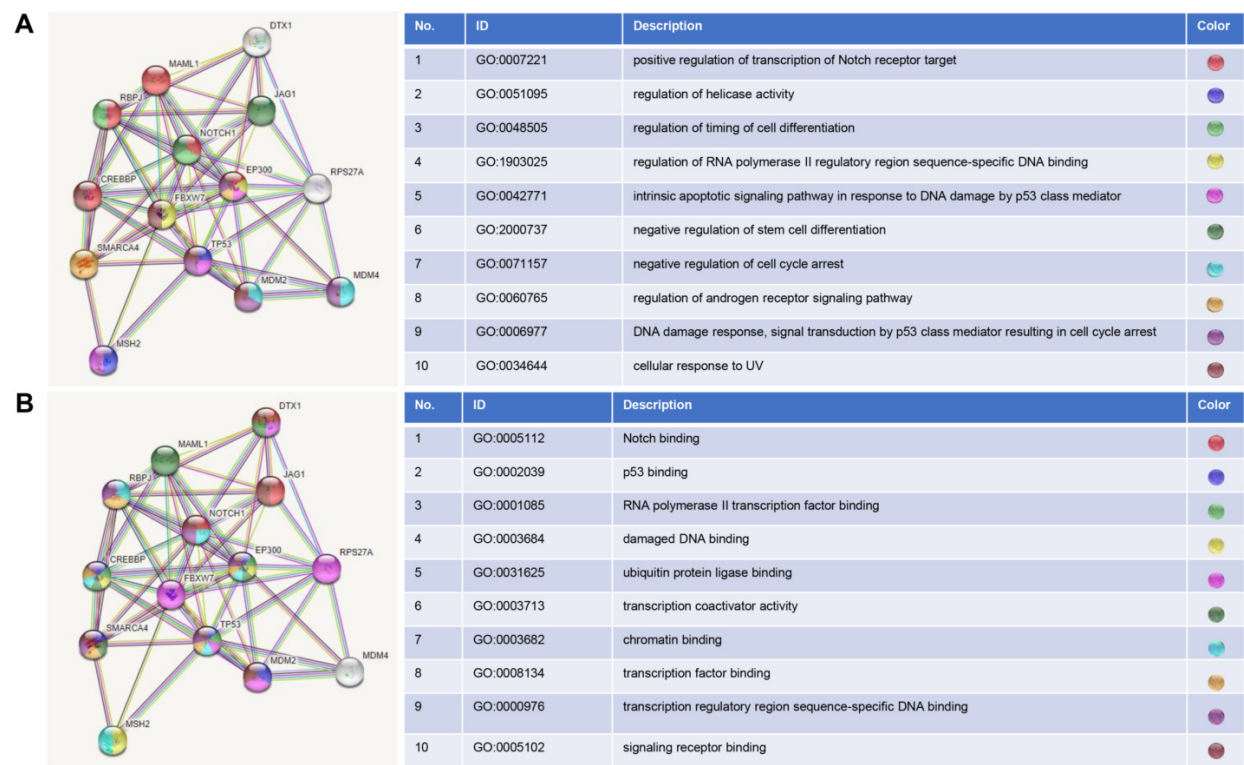


Figure S3: Gene ontology analysis in extraocular sebaceous carcinoma. (A) Gene ontology analysis based on biologic process. (B) Gene ontology analysis based on molecular function.

Publisher’s Note: MDPI stays neutral with regard to jurisdictional claims in published maps and institutional affiliations.



Copyright: © 2021 by the authors. Licensee MDPI, Basel, Switzerland. This article is an open access article distributed under the terms and conditions of the Creative Commons Attribution (CC BY) license (<http://creativecommons.org/licenses/by/4.0/>).