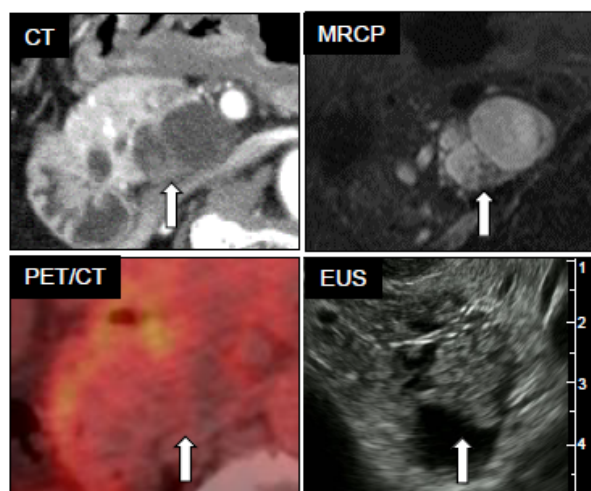


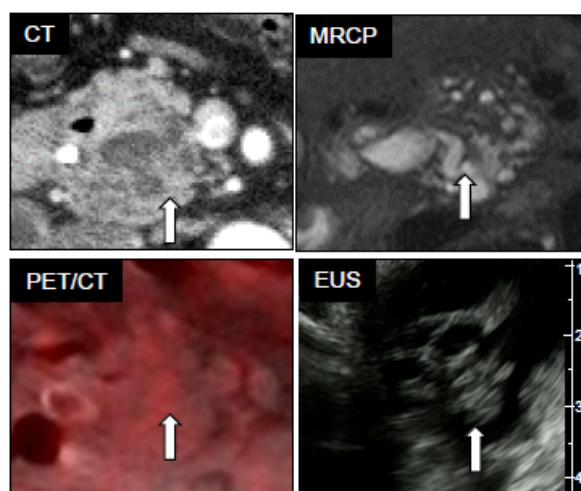
Supplementary Material: Clinical Utility and Limitation of Diagnostic Ability for Different Degrees of Dysplasia of Intraductal Papillary Mucinous Neoplasms of the Pancreas Using ^{18}F -Fluorodeoxyglucose-Positron Emission Tomography/Computed Tomography

Yuto Hozaka, Hiroshi Kurahara, Hideyuki Oi, Tetsuya Idichi, Yoichi Yamasaki, Yota Kawasaki, Kiyonori Tanoue, Megumi Jinguji, Masatoyo Nakajo, Atsushi Tani, Akihiro Nakajo, Yuko Mataka, Yoshihiko Fukukura, Hirotsugu Noguchi, Michiyo Higashi, Takashi Yoshiura, Akihito Tanimoto and Takao Ohtsuka

Low grade dysplasia No.5



High grade dysplasia No.12



Invasive carcinoma No.32

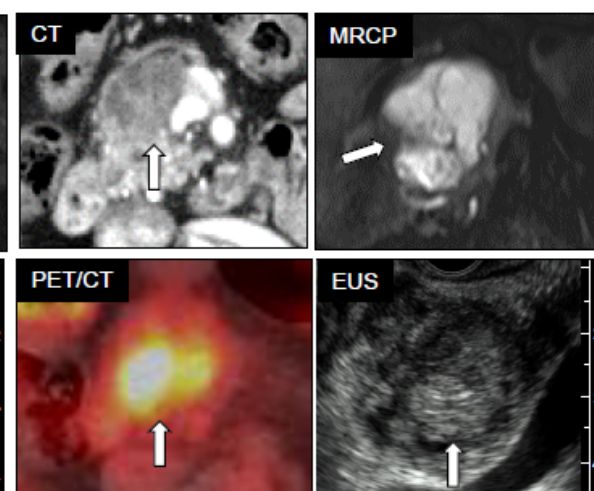


Figure S1. Representative MRI, EUS, and PET/CT images for IPMNs with LGD, HGD, and INV.