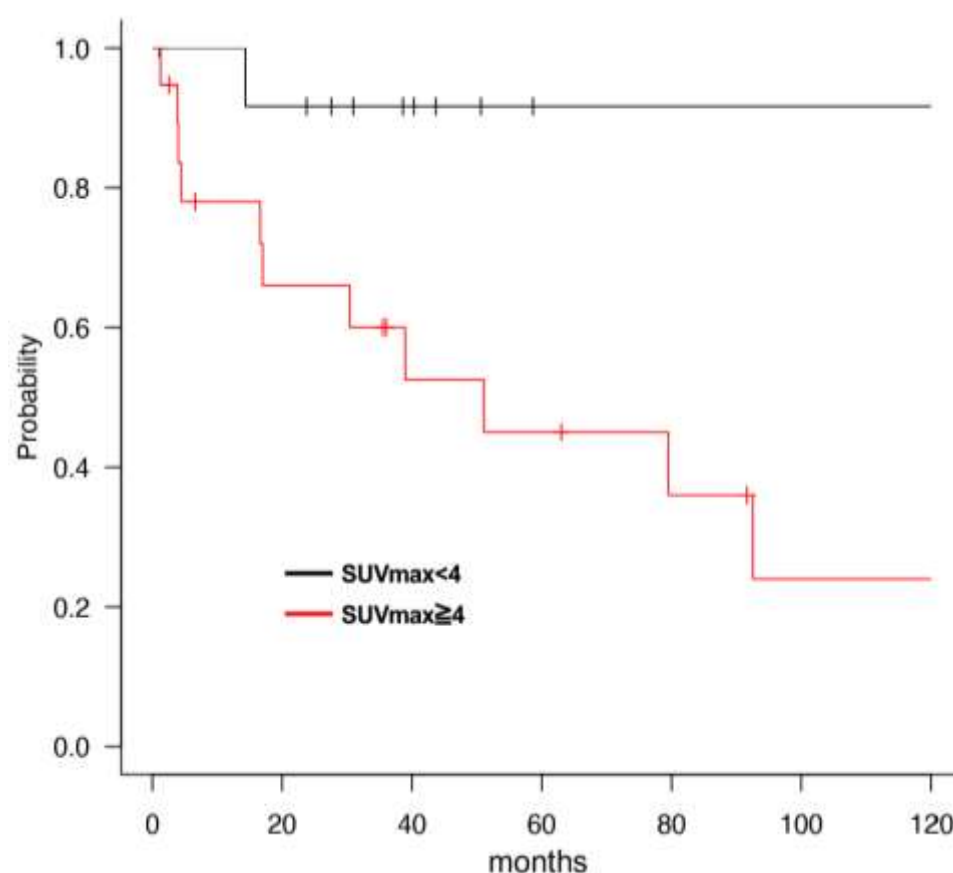


Article

# 18F-Fluorodeoxyglucose Positron Emission Tomography Is Useful in the Evaluation of Prognosis in Retroperitoneal Sarcoma

Toru Wakamatsu <sup>1,2,\*</sup>, Yoshinori Imura <sup>1,2</sup>, Hironari Tamiya <sup>1,2</sup>, Toshinari Yagi <sup>2</sup>, Naohiro Yasuda <sup>1</sup>, Sho Nakai <sup>1,2</sup>, Takaaki Nakai <sup>3</sup>, Hidetatsu Outani <sup>1</sup>, Kenichiro Hamada <sup>1</sup>, Shigeki Kakunaga <sup>3</sup>, Nobuhito Araki <sup>2</sup>, Takafumi Ueda <sup>3</sup> and Satoshi Takenaka <sup>1,2</sup>



**Figure S1.** OS of RPS patients with SUVmax low (<4) or SUVmax high (≥4) in group of other.

Table S1. Analyses of survival in other patients.

Variable		No.	Univariate analysis		
			5 year-OS (%)	95% CI (%)	P value
Age	60>	17	59.2	23.7-82.6	0.882
	60≤	28	60.1	35.6-77.9	
Gender	Male	24	37.8	15.8-59.9	0.0214
	Female	21	90	65.6-97.4	
Metastasis at first visit	Yes	8	NA	NA	<0.001
	No	37	66.8	44.2-82	
Tumor Grade	1	17	100	NA	0.00237
	2 and 3	23	29.9	10.8-51.9	
Tumor size	<5cm	10	87.5	38.7-98.1	0.0184
	≥5cm	34	51.3	28.9-69.8	
Surgical resection	Yes	26	66.6	37.4-84.5	0.0519
	No	19	49.2	22.2-71.6	
Chemotherapy	Yes	19	52.2	25.5-73.4	0.733
	No	26	67.6	36.7-85.8	
Radiotherapy	Yes	14	58.6	26.7-80.6	0.505
	No	31	61.5	34.5-80.1	
SUVmax	Low (4>)	13	91.7	53.9-98.8	0.0276
	High (4≤)	19	45	20.2-67.2	

Table S2. Multivariate Cox regression model of OS in other.

Covariates	multivariate analysis	
	HR (95% CI)	P value
Age (60> vs 60≤)	0.1522 (0.021251-0.91)	0.06103
Gender (Male vs Female)	0.1168 (0.01079-1.264)	0.07718
Metastasis at first visit (Yes vs No)	23.1 (1.216-438.8)	0.03663
Tumor Grade (1 vs 2 and 3)	2.071 (0.2277-18.84)	0.518
Tumor size (<5cm vs ≥5cm)	0.7958 (0.1009-6.276)	0.8284
Surgical resection (Yes or No)	0.1008 (0.01162-0.8741)	0.03733
Chemotherapy (Yes or No)	0.1908 (0.03451-1.055)	0.0576
Radiotherapy (Yes or No)	0.5015 (0.06777-3.711)	0.4992
SUVmax (4> vs 4≤)	16.47 (0.5837-464.9)	0.1002