

Supplementary materials

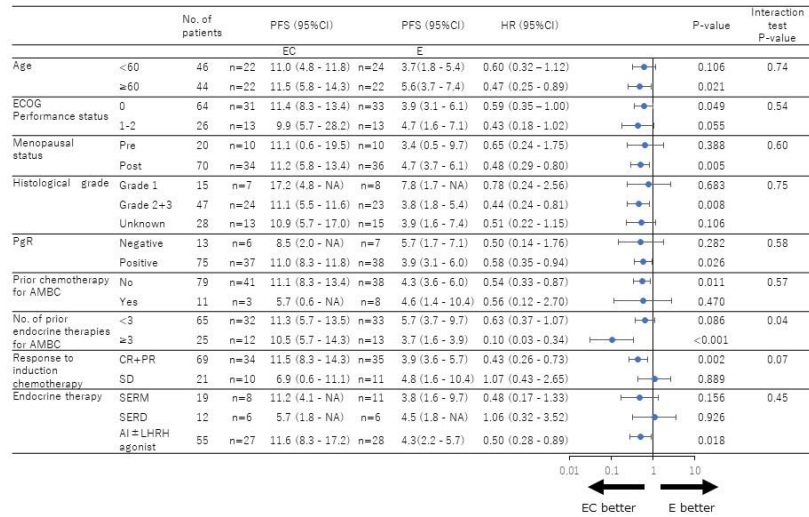


Figure S1. Forest plot for progression-free survival (PFS, months) in patients who received maintenance therapy with endocrine therapy alone (E) or endocrine therapy plus capecitabine (EC). AI, aromatase inhibitor; AMBC, advanced and metastatic breast cancer; CI, confidence interval; CR, complete response; ECOG, Eastern Cooperative Oncology Group; HR, hazard ratio; LHRH, luteinizing hormone–releasing hormone; PgR, progesterone receptor; PR, partial response; SD, stable disease; SERD, selective estrogen receptor down-regulator; SERM, selective estrogen receptor modulator.

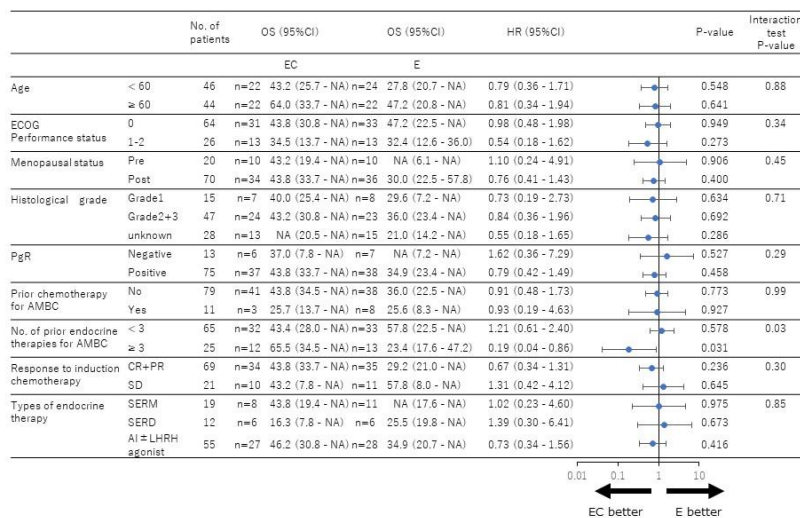


Figure S2. Forest plot for overall survival (OS, months) from the start of bevacizumab–paclitaxel induction therapy in patients who received maintenance therapy with endocrine therapy alone (group E) or endocrine therapy plus capecitabine (group EC). AI, aromatase inhibitor; AMBC, advanced and metastatic breast cancer; CI, confidence interval; CR, complete response; ECOG, Eastern Cooperative Oncology Group; HR, hazard ratio; LHRH, luteinizing hormone–releasing hormone; PgR, progesterone receptor; PR, partial response; SD, stable disease; SERD, selective estrogen receptor down-regulator; SERM, selective estrogen receptor modulator.