

**Silibinin suppresses tumor cell-intrinsic resistance to
nintedanib and enhances its clinical activity in lung cancer**

Uncropped images

Figure 3 NTD-responsive 24h

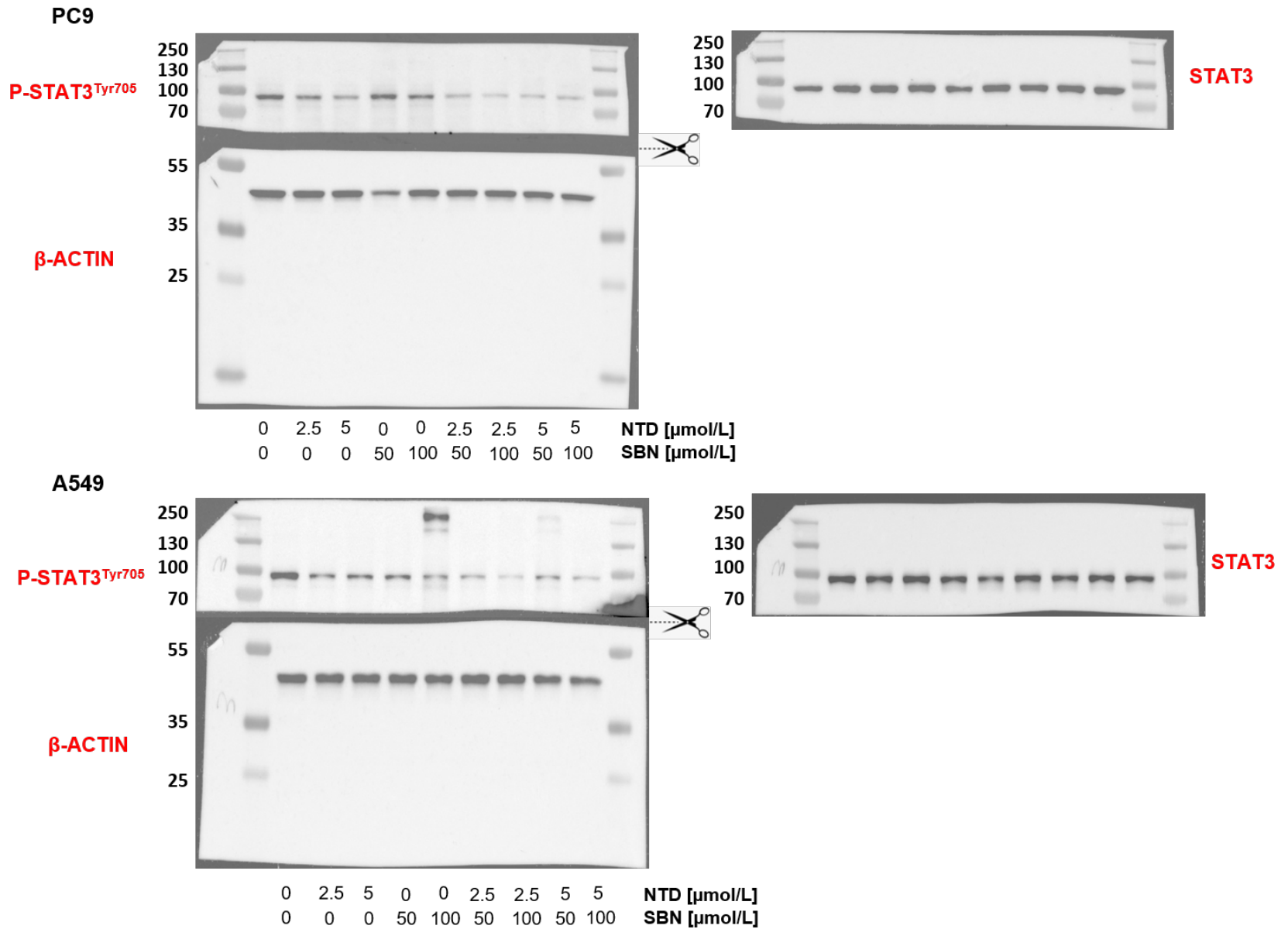
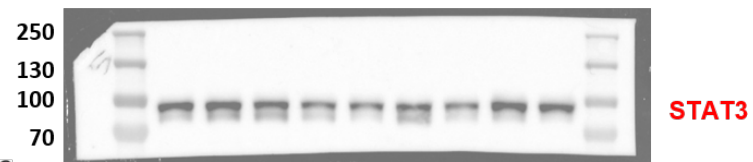
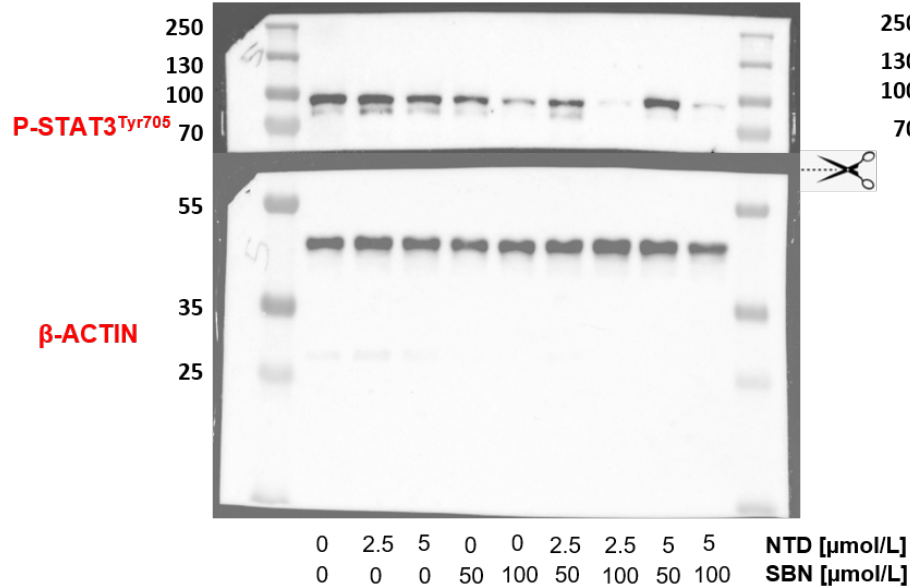


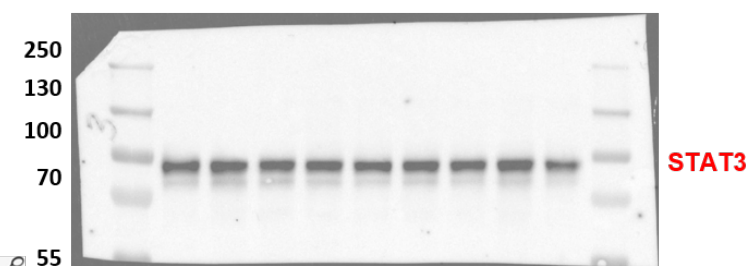
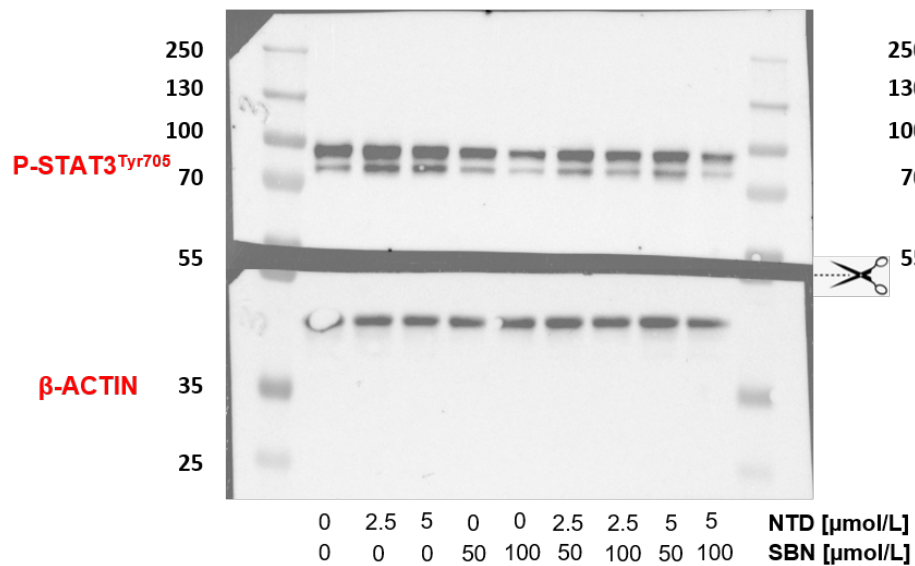
Figure 3 NTD-resistant 24h

H460



STAT3

H1975



STAT3

Figure 3 NTD-resistant 48h

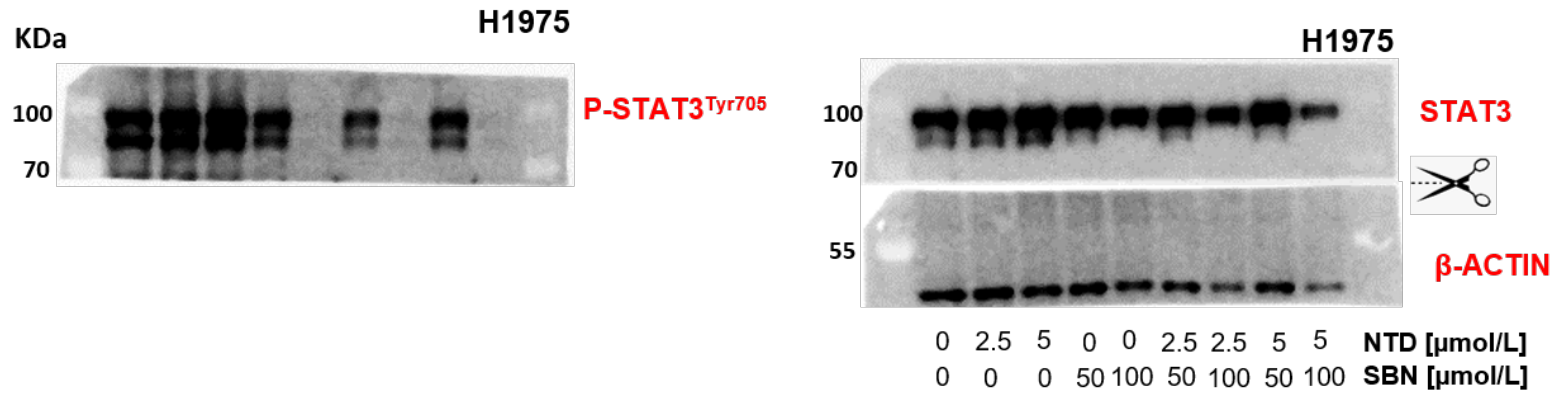


Figure S3 A Broken boxes marks the final cropped images

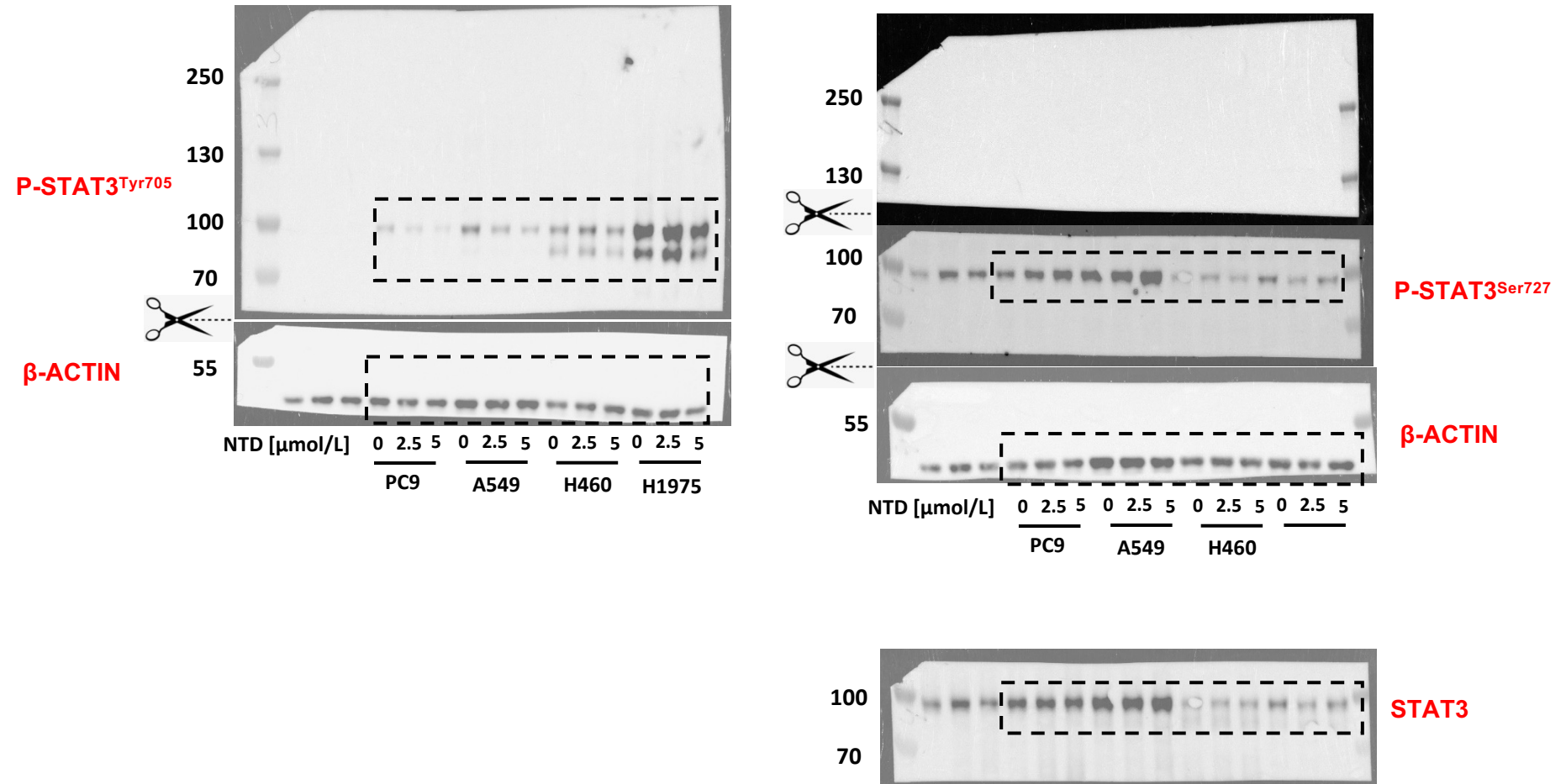


Figure S3 B

