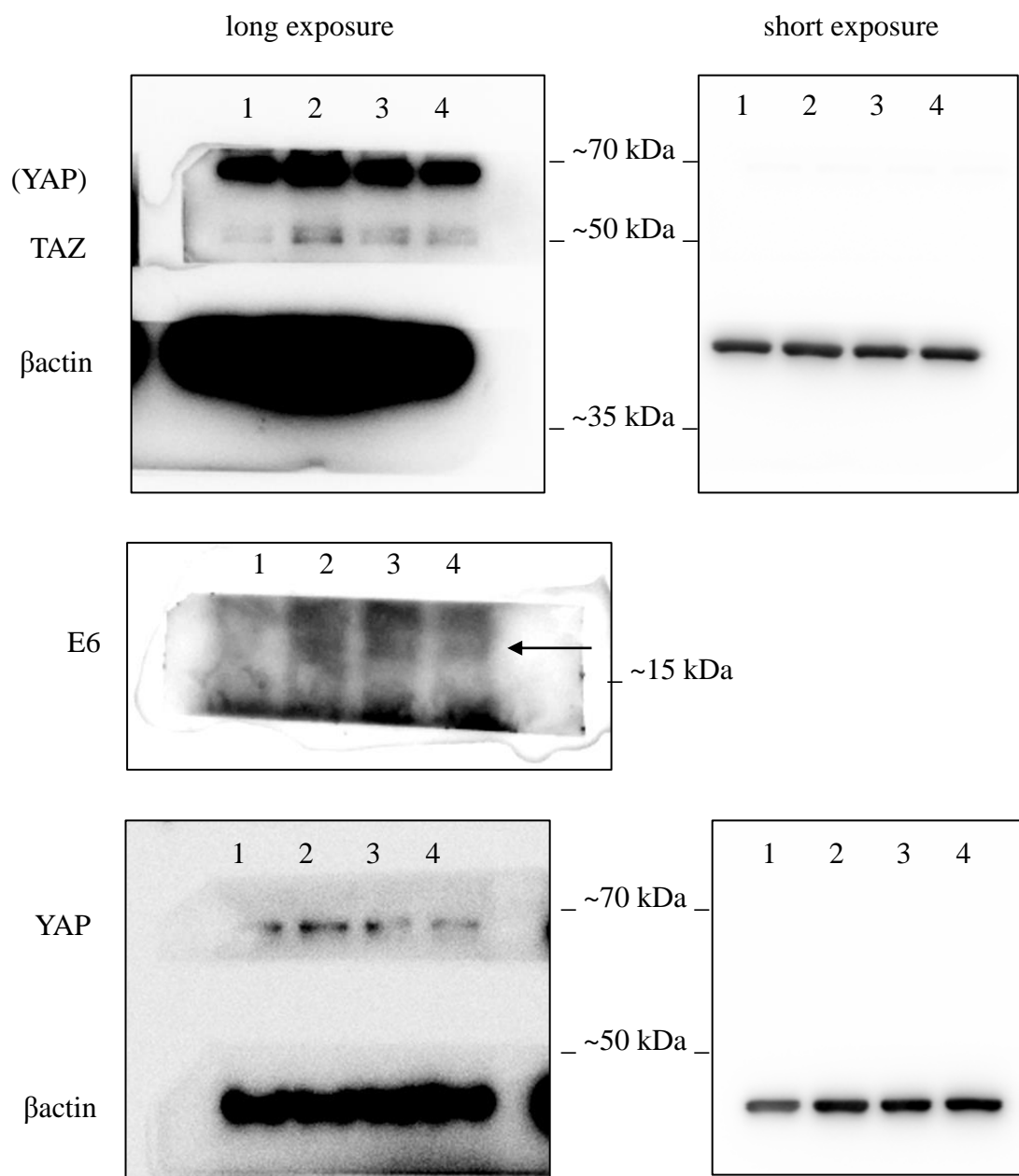


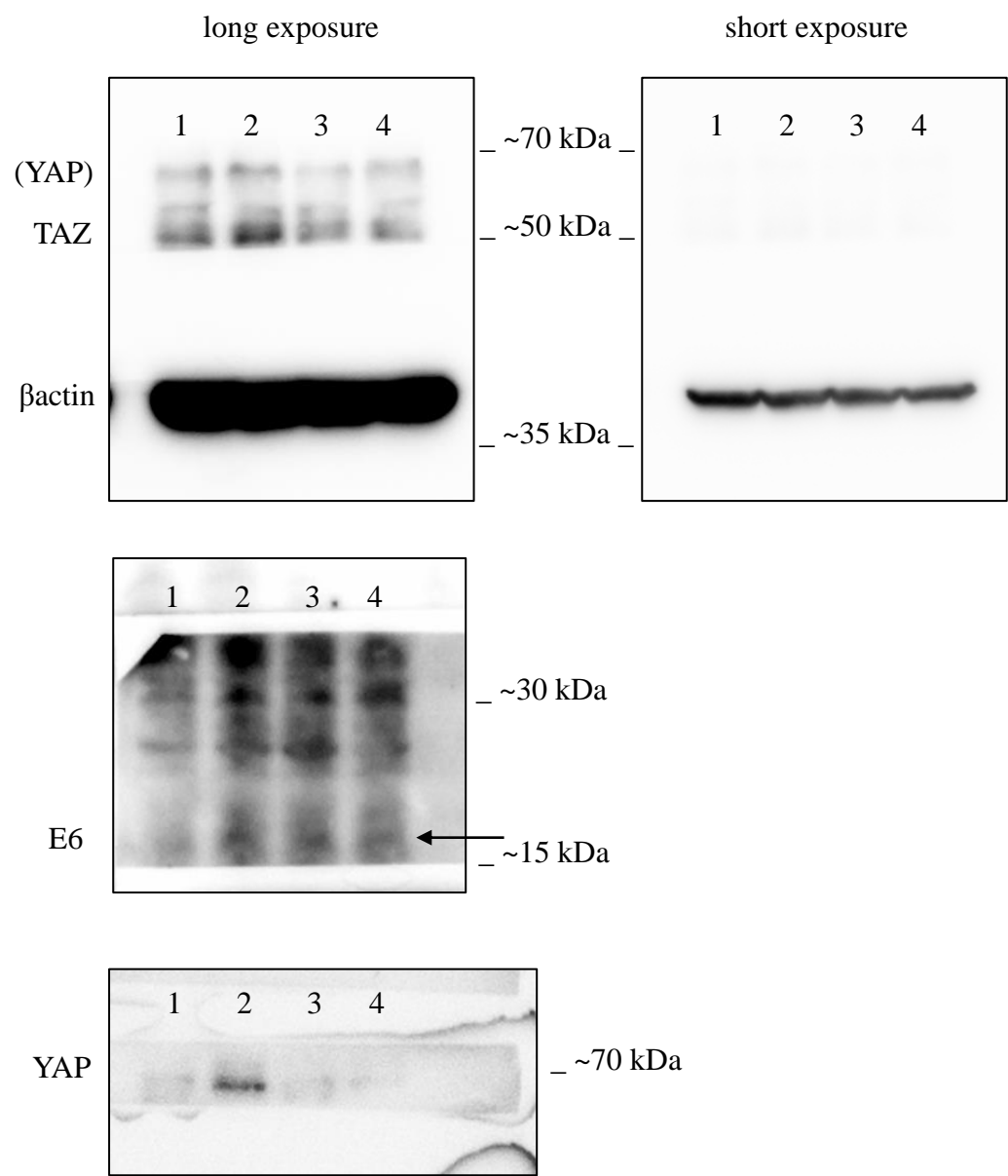
Supplementary Information

Original uncropped blots displayed in Figure 2A for HEK293T cells. β -actins shown in the figure are those corresponding to the blot of TAZ. YAP was probed through a second run and incubation with a YAP-specific antibody.



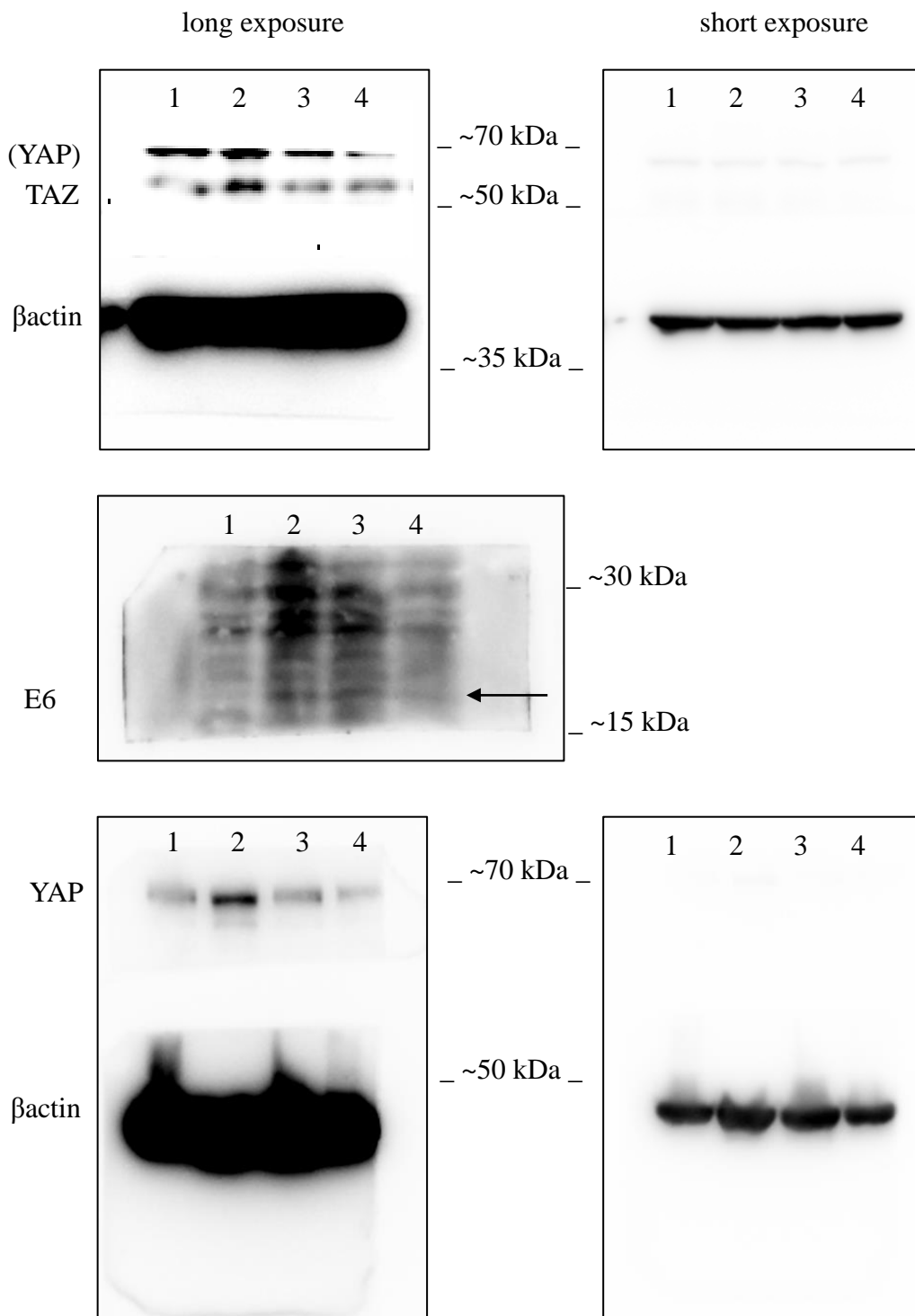
1: empty vector; 2: E6; 3: E6 Y43E/F47R; 4: E6 T149D/L151A

Original uncropped blots displayed in Figure 2A for C33A cells. YAP was reprobbed on the same membrane after stripping, cutting and reprobing with a YAP-specific antibody.



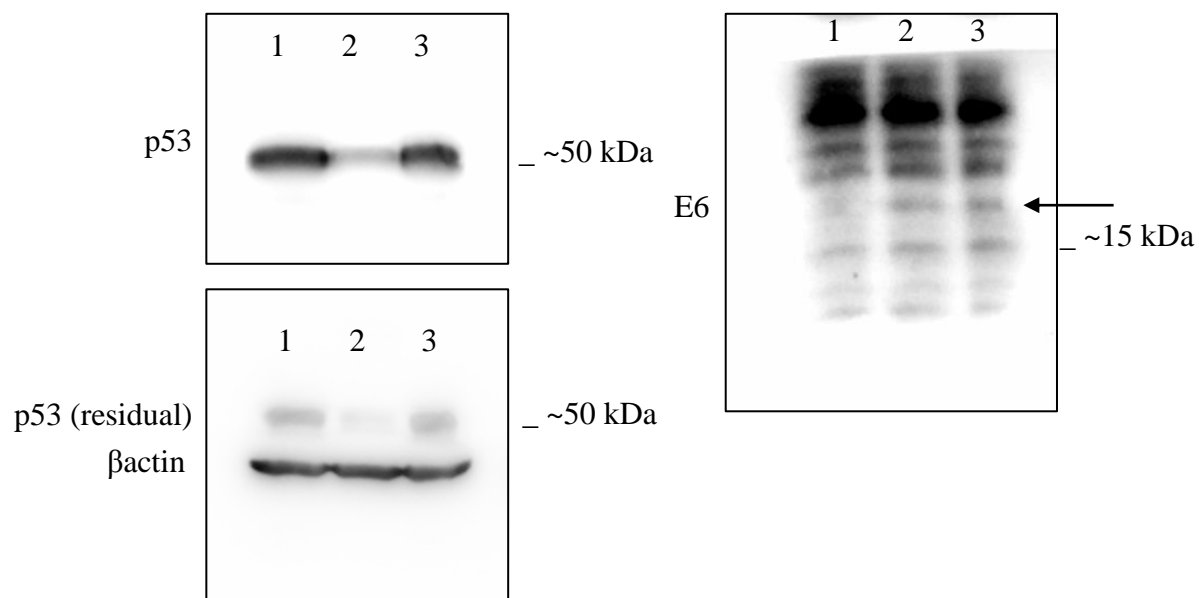
1: empty vector; 2: E6; 3: E6 Y43E/F47R; 4: E6 T149D/L151A

Original uncropped blots displayed in Figure 2A for H1299 cells. β actins shown in the figure are those corresponding to the blot of TAZ. YAP was probed through a second run and incubation with a YAP-specific antibody.



1: empty vector; 2: E6; 3: E6Y43E/F47R; 4: E6 T149D/L151A

Original uncropped blots displayed in Figure 2E. β actins were blotted onto the same membrane wherein p53 was visualized after stripping and reprobing.

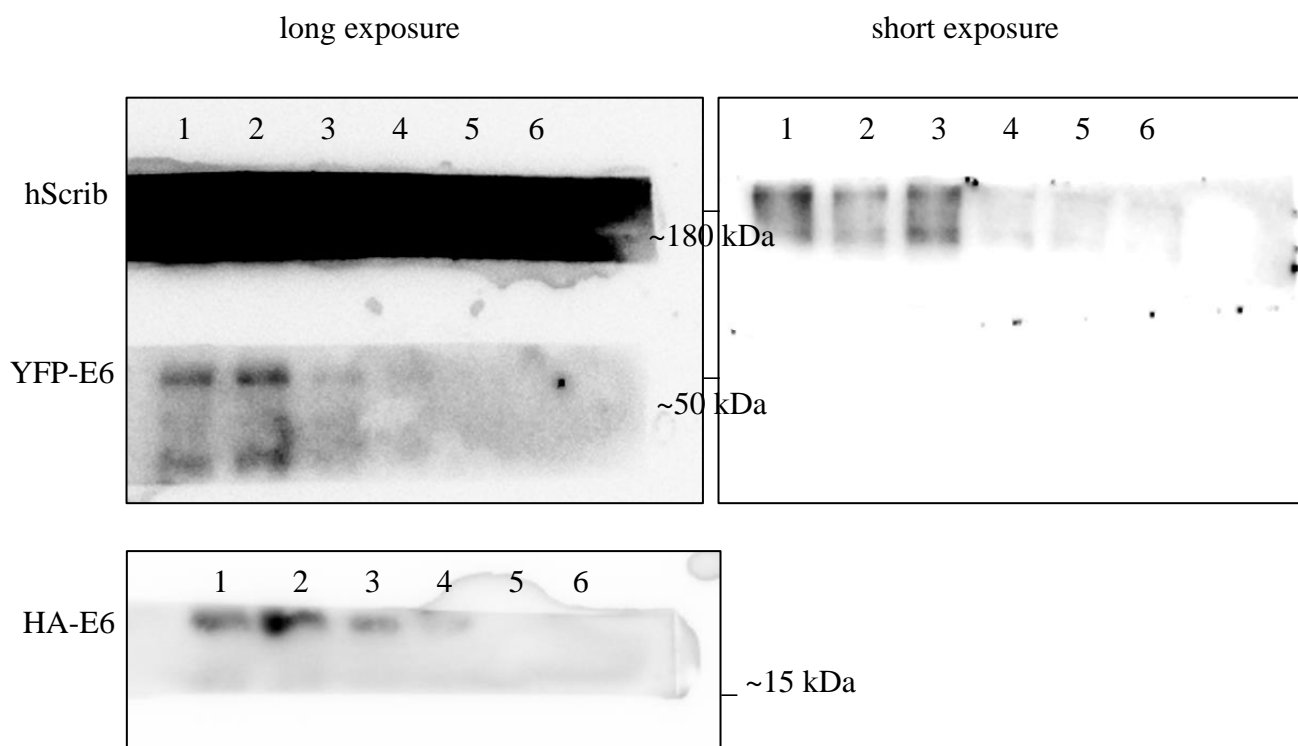


1: 293T empty vector

2: 293T E6

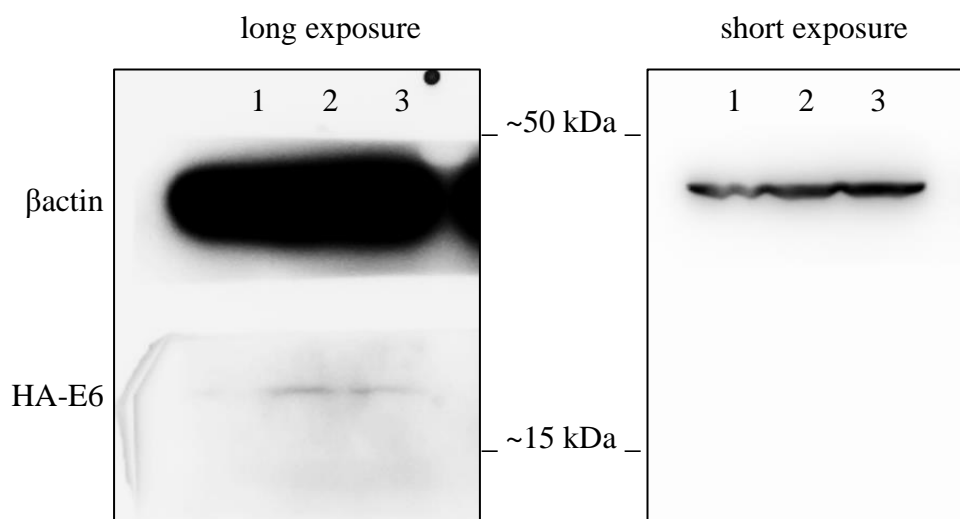
3: 293T E6 Y43E/F47R

Original uncropped blots displayed in Figure 3C. All proteins were blotted on the same membrane.



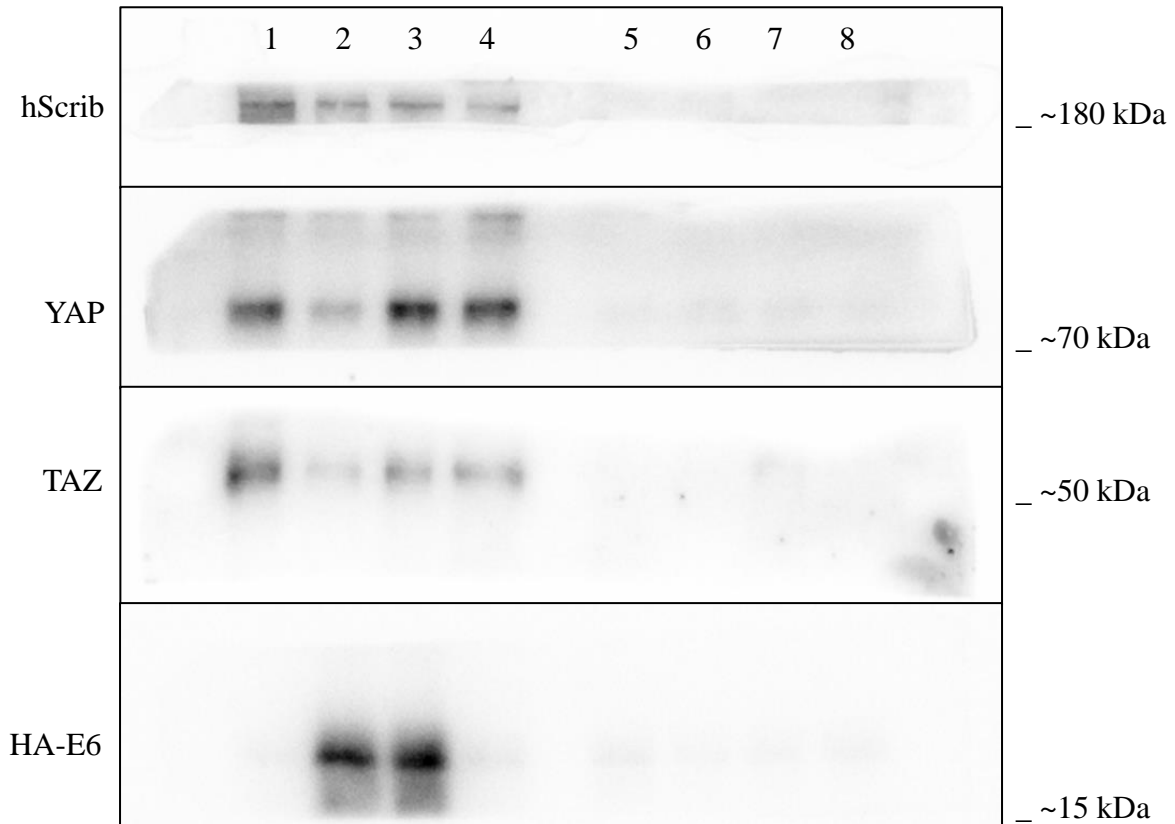
- 1: H1299 IP-hScrib YFP-E6 + HA-E6
- 2: H1299 IP-hScrib YFP-E6 T149D/L151A + HA-E6
- 3: H1299 IP-hScrib YFP-E6 T149D/L151A + HA-E6 Y43E/F47R
- 4: H1299 Control-IP YFP-E6 + HA-E6
- 5: H1299 Control-IP YFP-E6 T149D/L151A + HA-E6
- 6: H1299 Control-IP YFP-E6 T149D/L151A + HA-E6 Y43E/F47R

Original uncropped blots displayed in Figure 3D. Proteins were blotted on the same membrane.



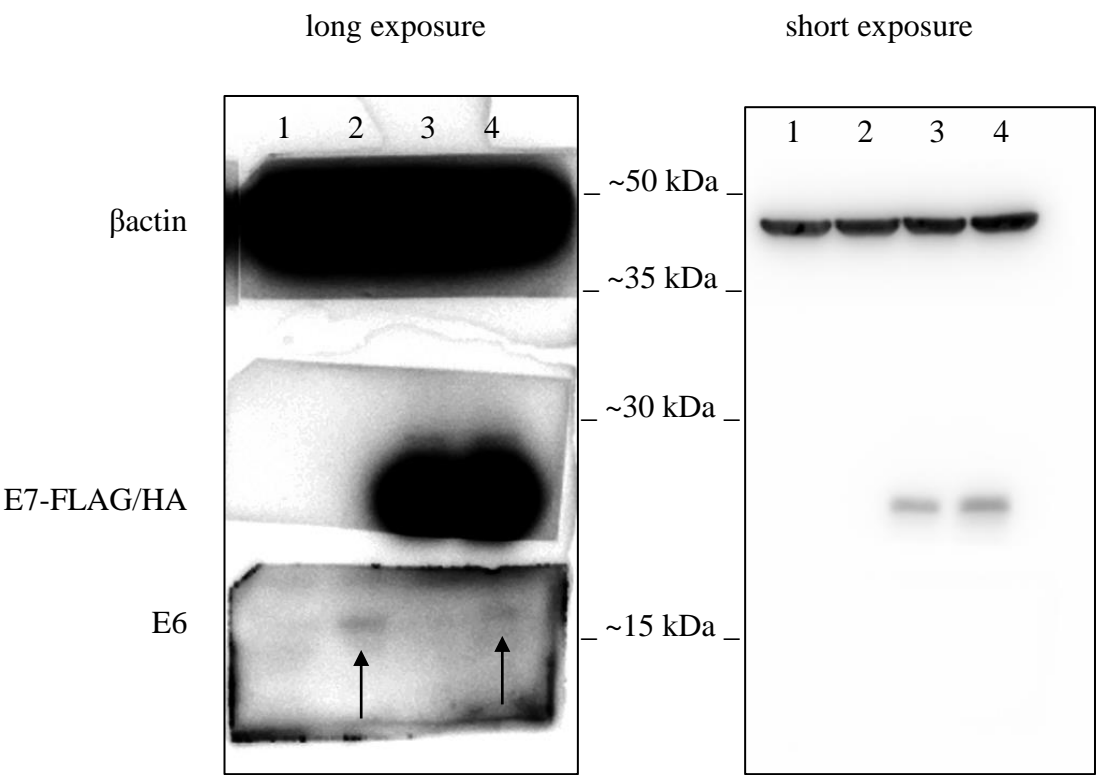
- 1: 293T YFP-hScrib + Rluc-E6 T149D/L151A + empty vector
2: 293T YFP-hScrib + Rluc-E6 T149D/L151A + HA-E6
3: 293T YFP-hScrib + Rluc-E6 T149D/L151A + HA-E6 Y43E/F47R

Original uncropped blots displayed in Figure 5A. All proteins were blotted on the same membrane.



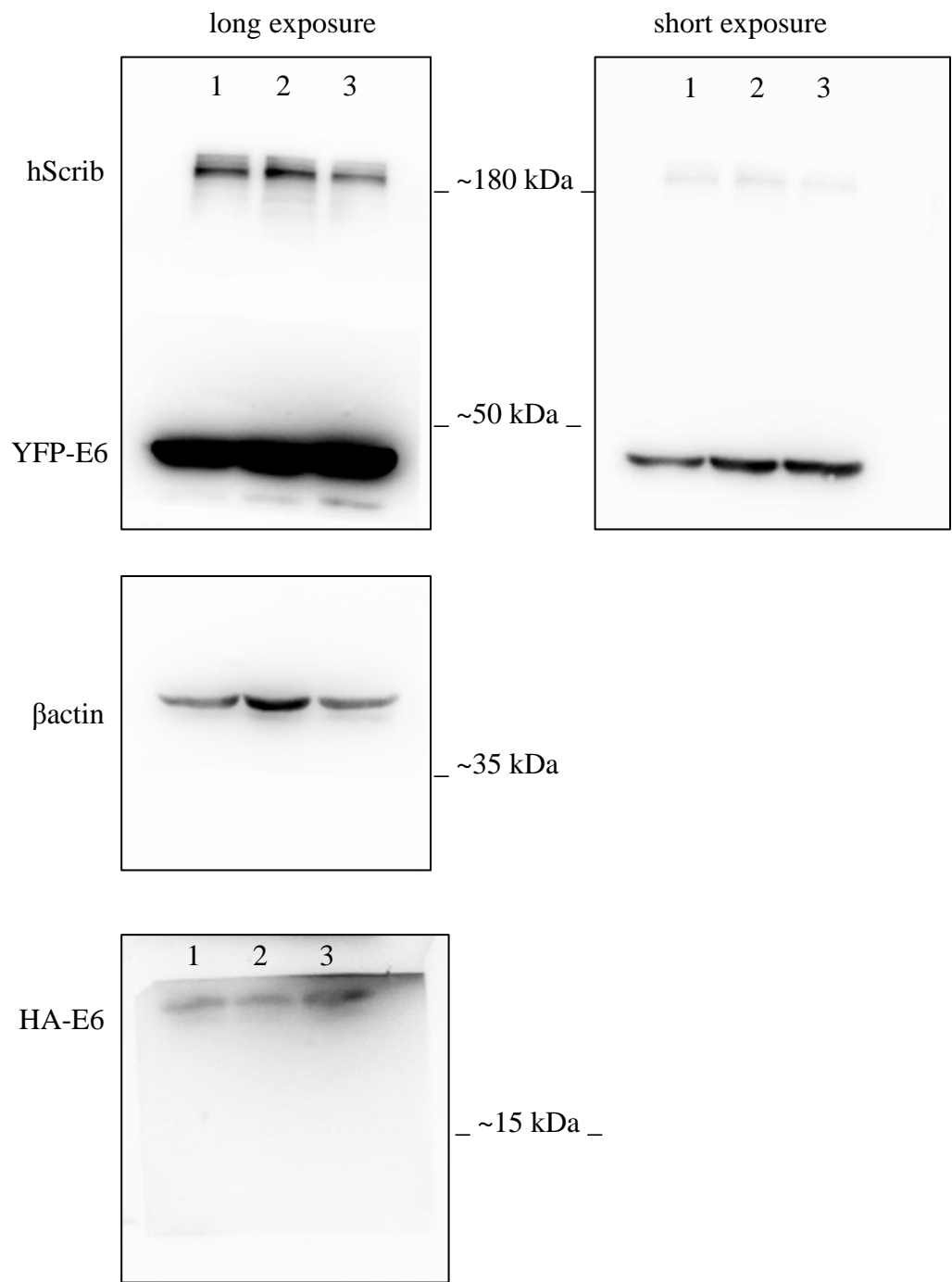
- 1: IP-hScrib HaCaT-empty vector
- 2: IP-hScrib HaCaT-E6
- 3: IP-hScrib HaCaT-E6 Y43E/F47R
- 4: IP-hScrib HaCaT-E6 T149D/L151A;
- 5: Control-IP HaCaT-empty vector
- 6: Control-IP HaCaT-E6
- 7: Control-IP HaCaT-E6 Y43E/F47R
- 8: Control-IP HaCaT-E6 T149D/L151A

Original uncropped blots displayed in Figure S1. Proteins were blotted on the same membrane.



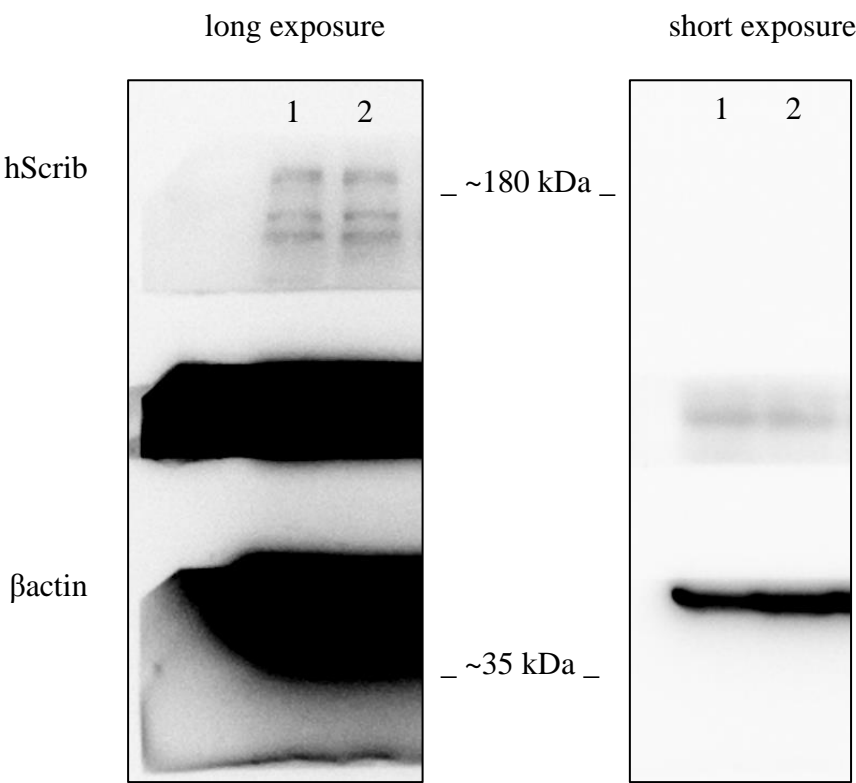
- 1: HaCaT empty vector
- 2: HaCaT E6
- 3: HaCaT E7-FLAG/HA
- 4: HaCaT E6 + E7-FLAG/HA

Original uncropped blots displayed in Figure S3C. Proteins were blotted on the same membrane. β actins were blotted after stripping and reprobing onto the same slice wherein YFP-E6 was visualized.

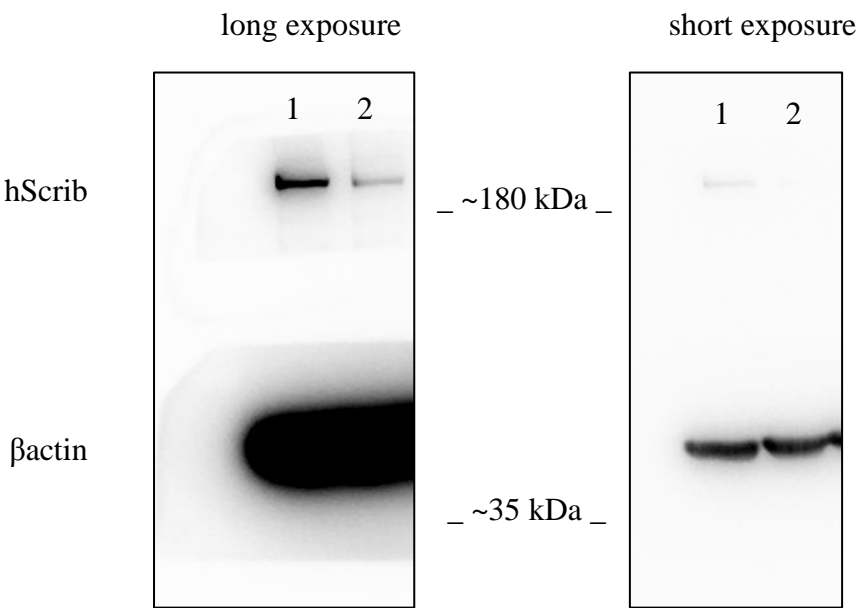


- 1: H1299 YFP-E6 + HA-E6
- 2: H1299 YFP-E6 T149D/L151A + HA-E6
- 3: H1299 YFP-E6 T149D/L151A + HA-E6 Y43E/F47R

Original uncropped blots displayed in Figure S4 for soluble extracts. Proteins were blotted on the same membrane. Middle slice show a protein blot not related to the study.

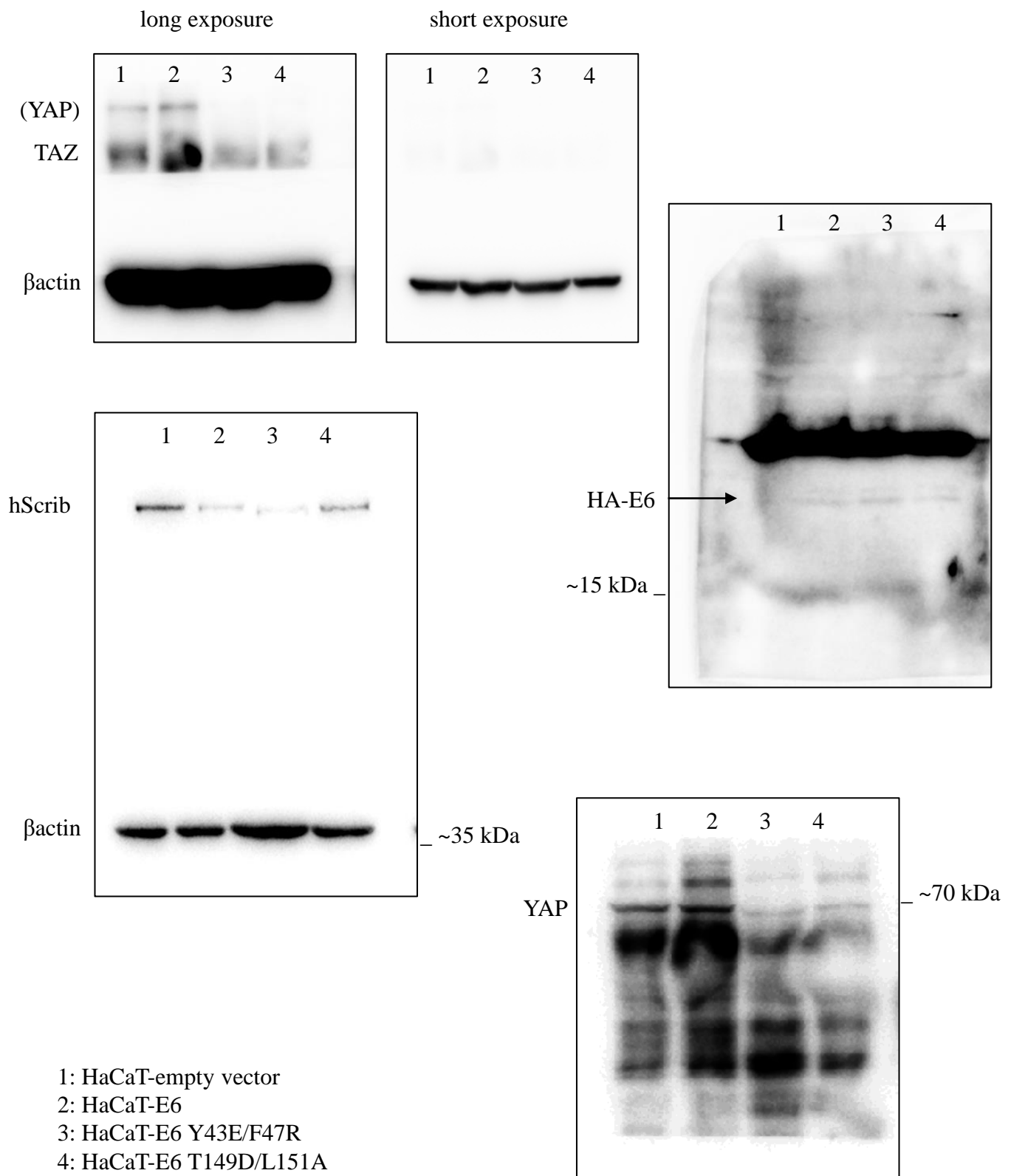


Original uncropped blots displayed in Figure S4 for insoluble extracts. Proteins were blotted on the same membrane.

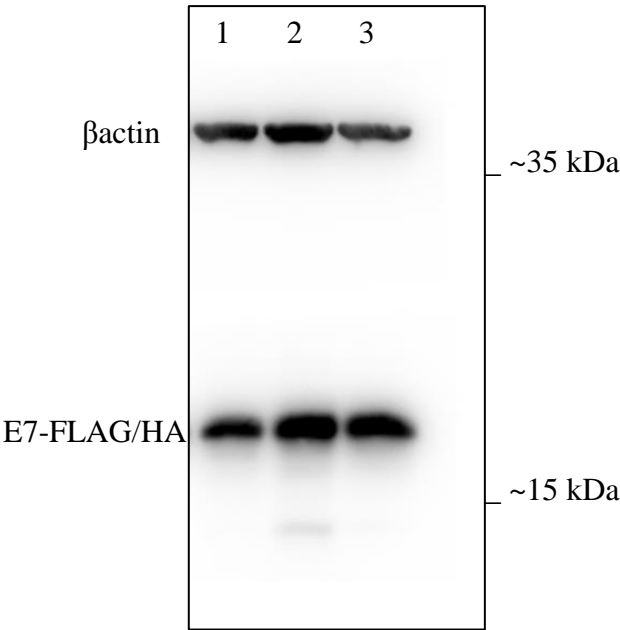


1: HaCaT-empty vector; 2: HaCaT-E6

Original uncropped blots displayed in Figure S5A. β actins shown in the figure are those corresponding to the blot of TAZ.

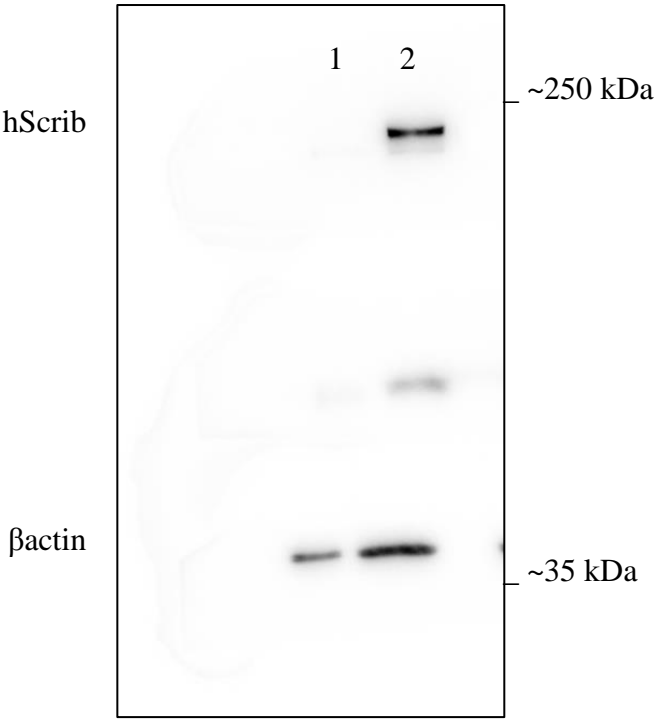


Original uncropped blots displayed in Figure S5D. Proteins were blotted on the same membrane.



- 1: HaCaT-E6 + E7-FLAG/HA
- 2: HaCaT-E6 Y43E/F47R + E7-FLAG/HA
- 3: HaCaT-E6 T149D/L151A + E7-FLAG/HA

Original uncropped blots displayed in Figure S5F. Proteins were blotted on the same membrane. Middle slice show a protein blot not related to the study.



- 1: HaCaT-E6+E7 YFP
- 2: HaCaT-E6+E7 YFP-hScrib