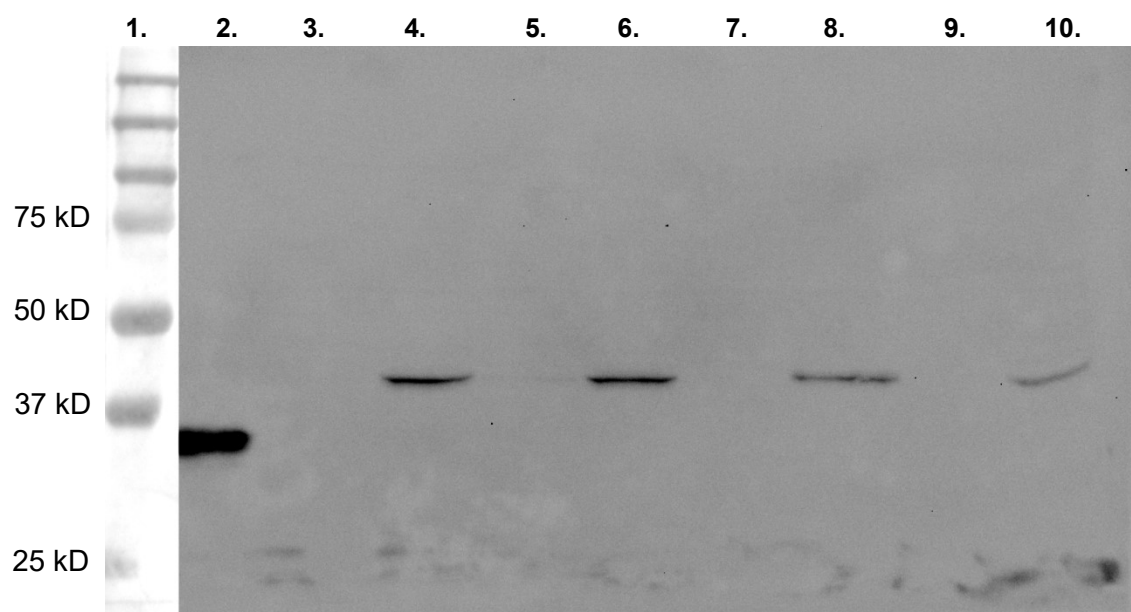
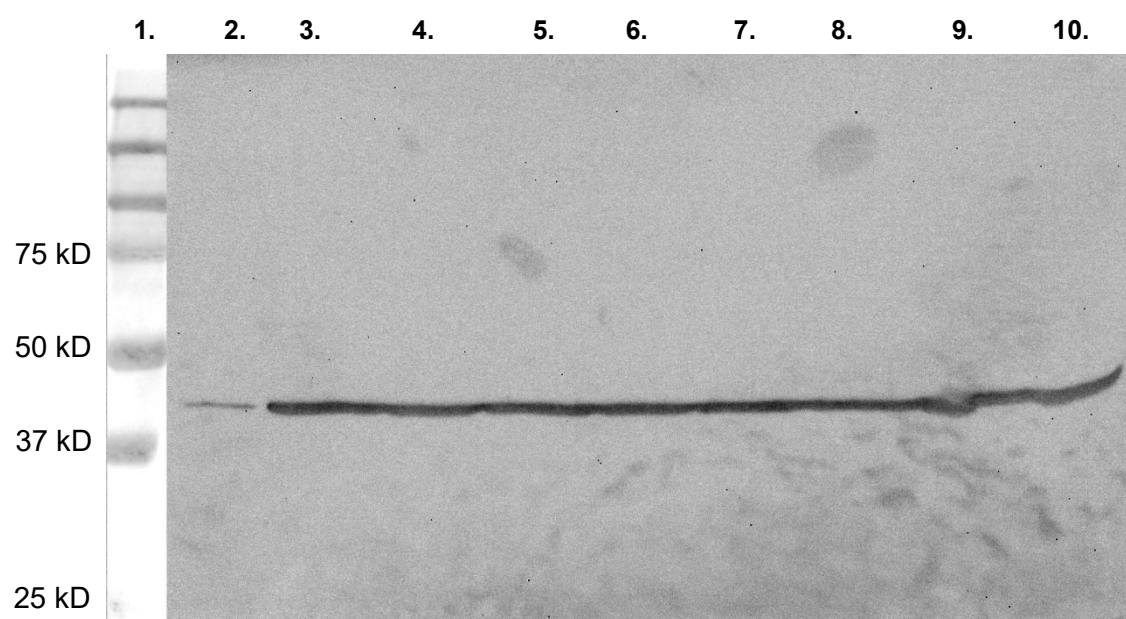


Figure S1A

Western Blot HLA-G clone 4H84



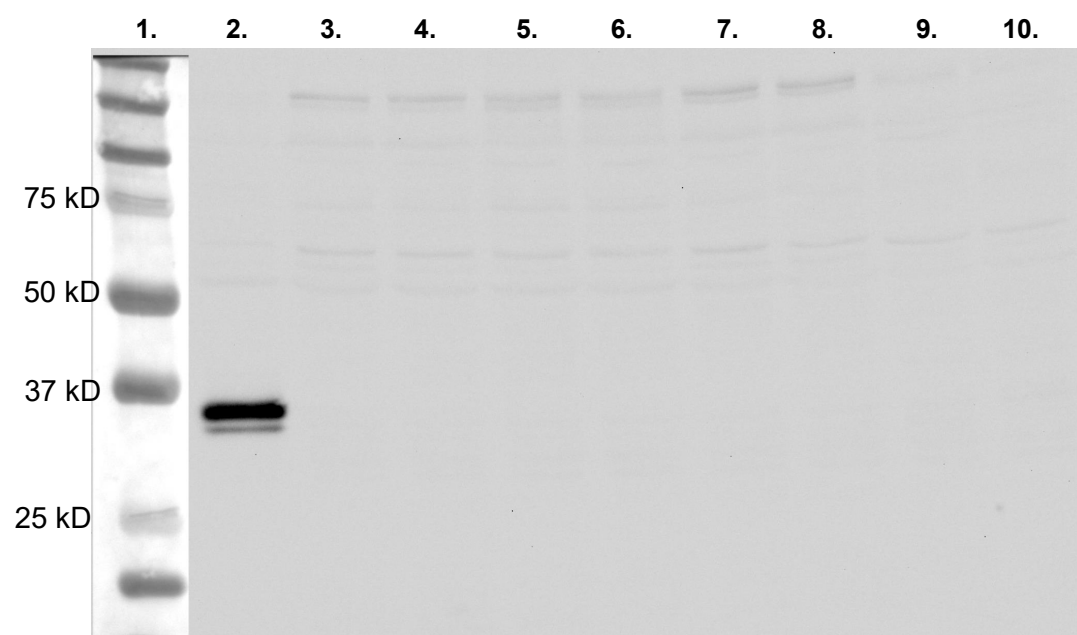
Western Blot β -Actin



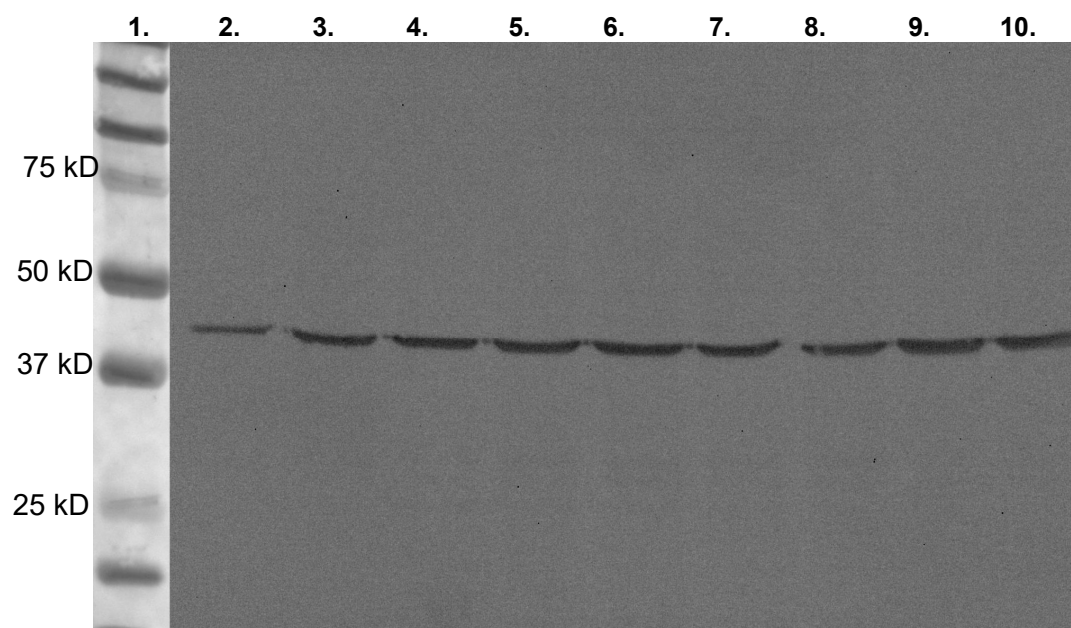
1. Marker
2. K562-HLAG5; 1 μ g
3. A673 unstimulated; 50 μ g
4. A673 IFN γ 2000U 48h; 50 μ g
5. A4573 unstimulated; 50 μ g
6. A4573 IFN γ 2000U 48h; 50 μ g
7. TC-32 unstimulated; 50 μ g
8. TC-32 IFN γ 2000U 48h; 50 μ g
9. MS-EWS-6 unstimulated; 50 μ g
10. MS-EWS-6 IFN γ 2000U 48h; 50 μ g

Figure S1B

Western Blot HLA-G clone 5A6G7



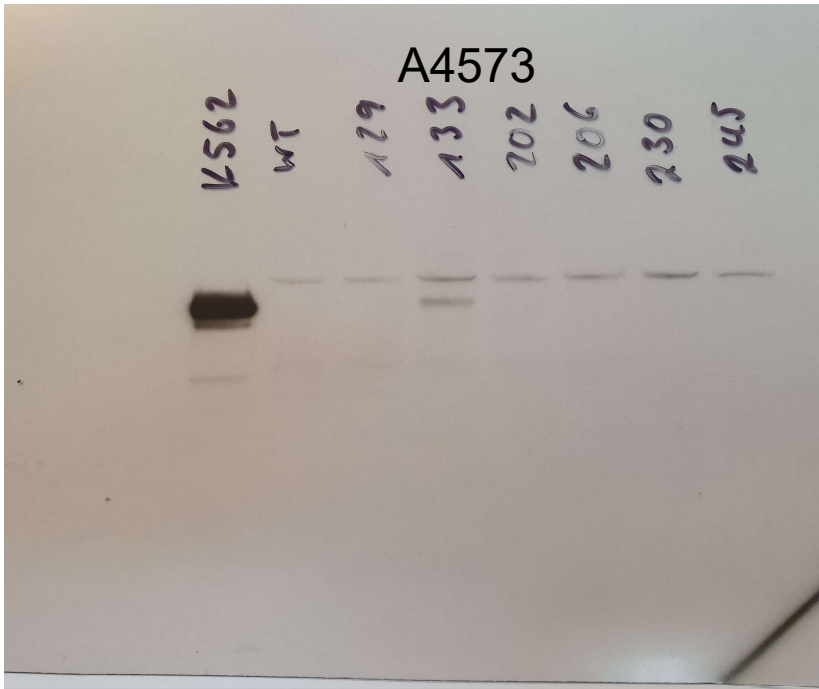
Western Blot β -Actin



1. Marker
2. K562-HLAG5; 5 μ g
3. A673 unstimulated; 50 μ g
4. A673 IFN γ 2000U 48h; 50 μ g
5. A4573 unstimulated; 50 μ g
6. A4573 IFN γ 2000U 48h; 50 μ g
7. TC-32 unstimulated; 50 μ g
8. TC-32 IFN γ 2000U 48h; 50 μ g
9. MS-EWS-6 unstimulated; 50 μ g
10. MS-EWS-6 IFN γ 2000U 48h; 50 μ g

Appendix B/B

Western Blot HLA-G clone 4H84



Appendix B/C

Western Blot HLA-G clone 4H84

