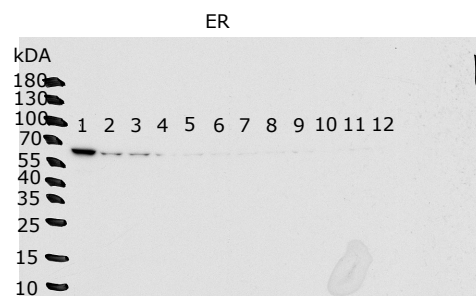
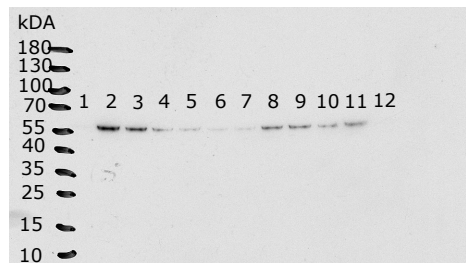


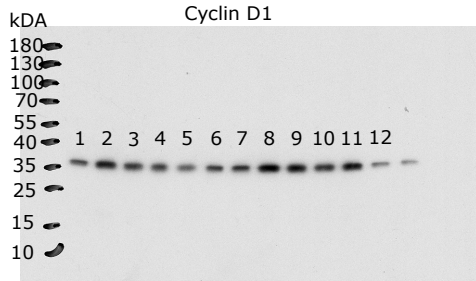
MCF-7 Raw Blots: Figure 2B



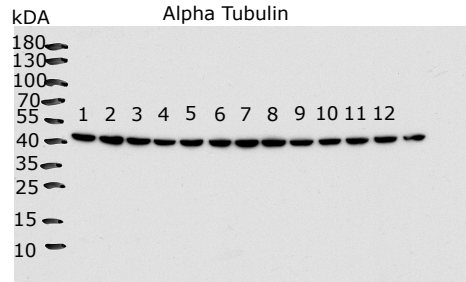
MYC



Cyclin D1



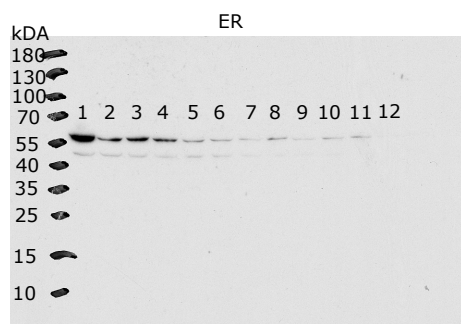
Alpha Tubulin



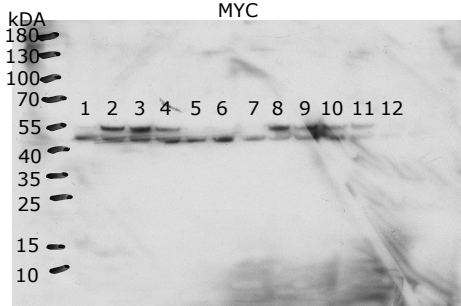
Key for all blots:

1. DMSO
2. Estrogen E2 1 nM
3. E2 + A-485 .25 μ M
4. E2 + A-485 .75 μ M
5. E2 + A-485 1.5 μ M
6. E2 + A-485 2.25 μ M
7. E2 + A-485 3 μ M
8. E2 + GNE-049 .25 μ M
9. E2 + GNE-049 .50 μ M
10. E2 + GNE-049 .75 μ M
11. E2 + GNE-049 1 μ M
12. E2 + Fulvestrant 100 nM

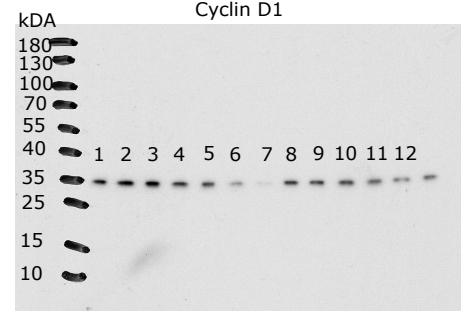
T-47D Raw Blots: Figure 2C



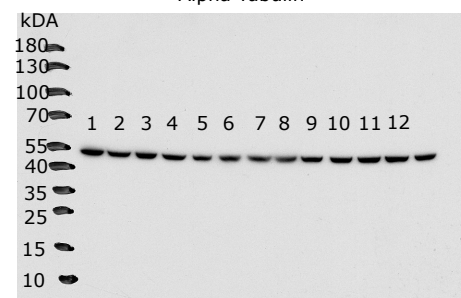
MYC



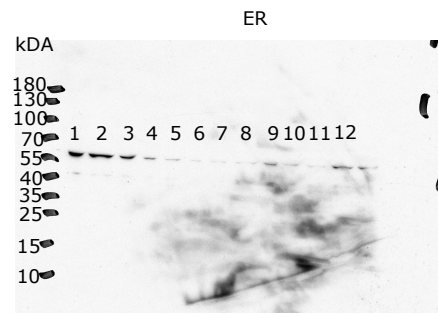
Cyclin D1



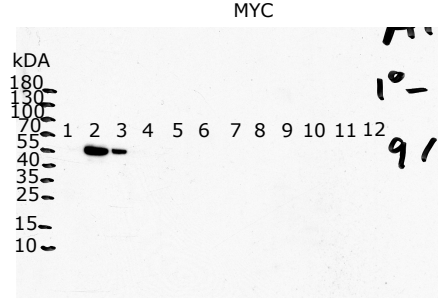
Alpha Tubulin



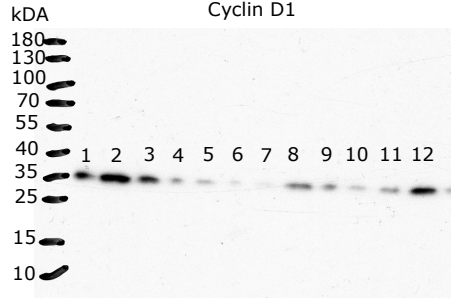
BT-474 Raw Blots: Figure 2D



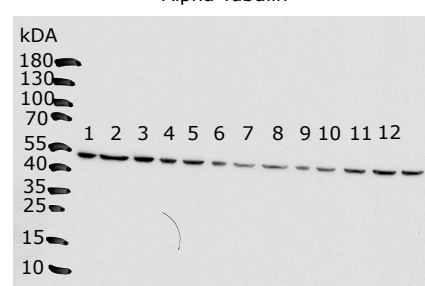
MYC



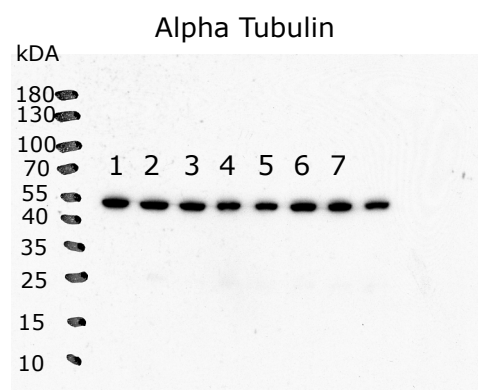
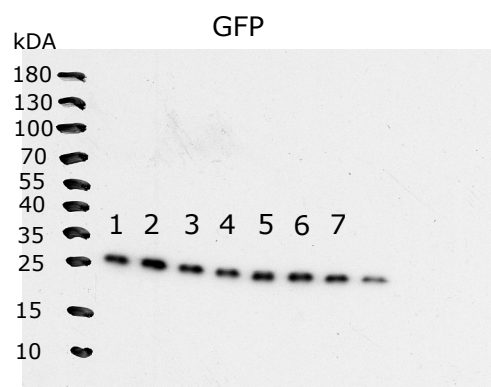
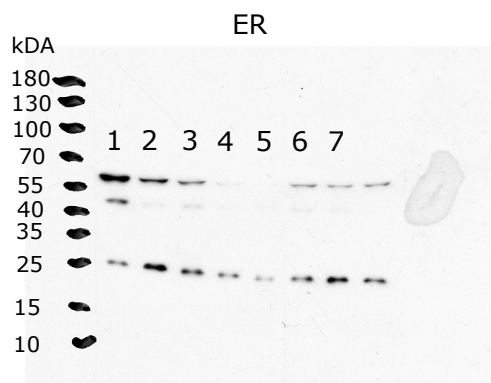
Cyclin D1



Alpha Tubulin



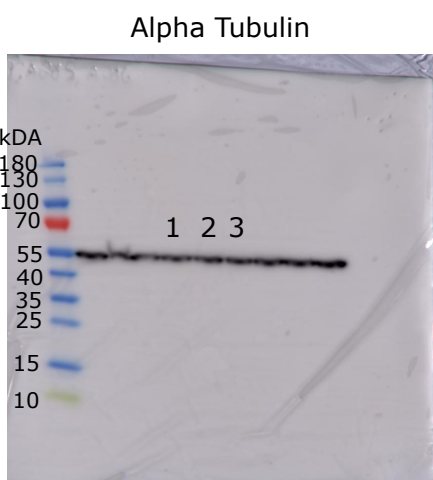
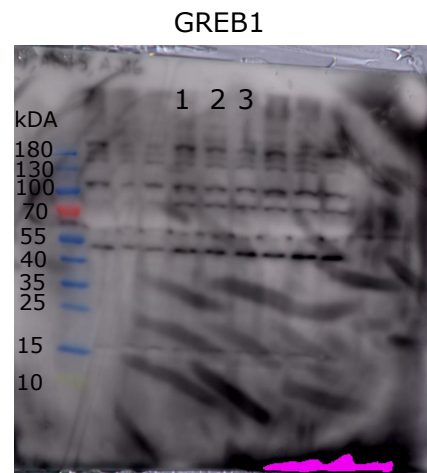
MCF-7 ERE Blot: Figure 2G



Key:

1. DMSO
2. Estrogen E2 1 nM
3. E2 + A-485 .25 μ M
4. E2 + A-485 .75 μ M
5. E2 + A-485 1.5 μ M
6. E2 + GNE-049 .25 μ M
7. E2 + GNE-049 .50 μ M

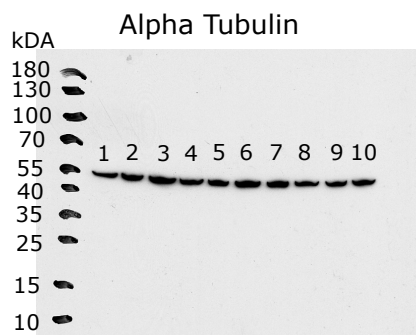
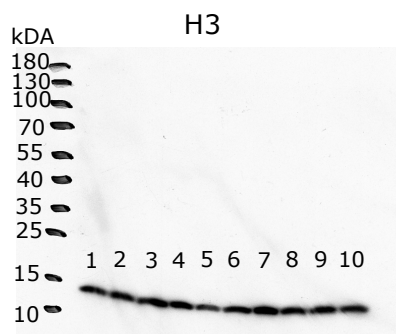
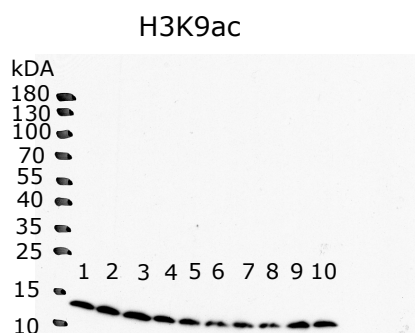
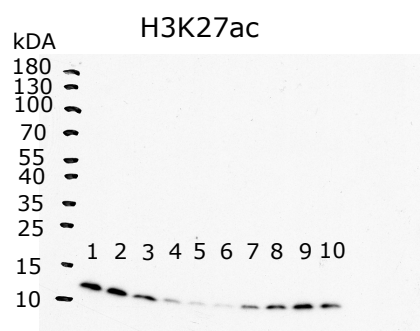
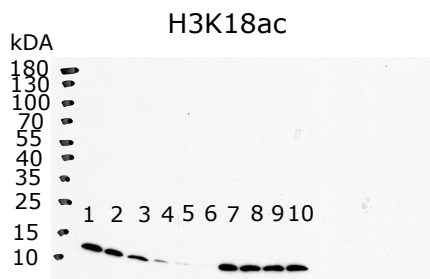
MCF-7 GREB1 Blot: Figure 2G



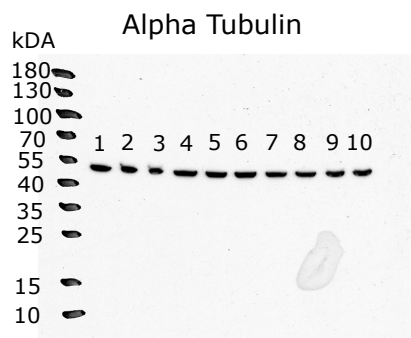
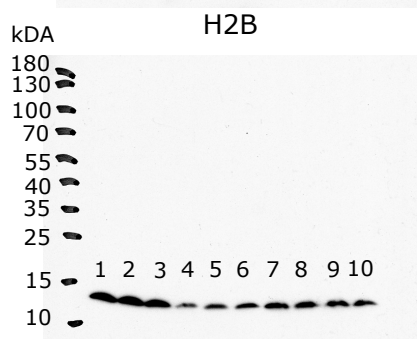
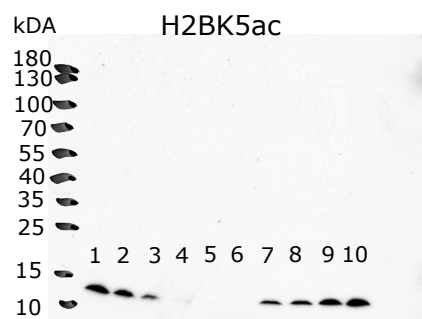
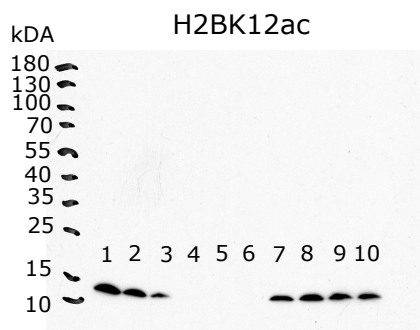
Key:

1. DMSO
2. A-485 3 μ M
3. GNE-049 1 μ M

MCF-7 H3ac Raw Blots:
Corresponds to Figure 4A



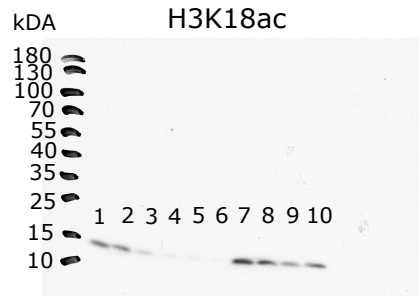
MCF-7 H2Bac Raw Blots:
Corresponds to Figure 4A



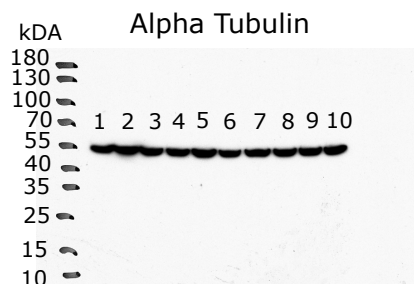
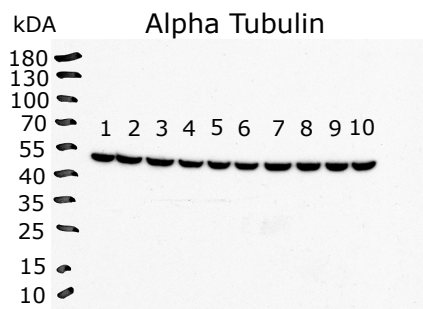
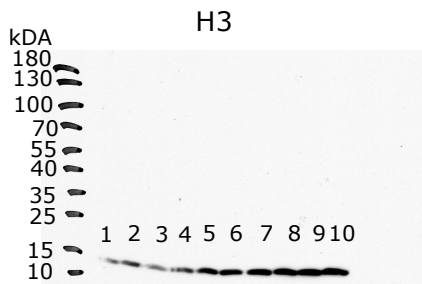
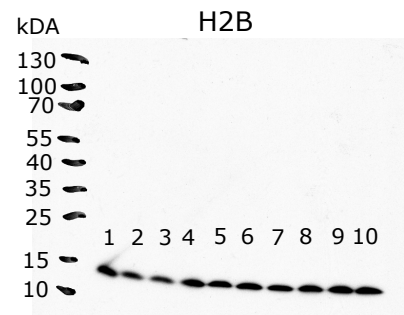
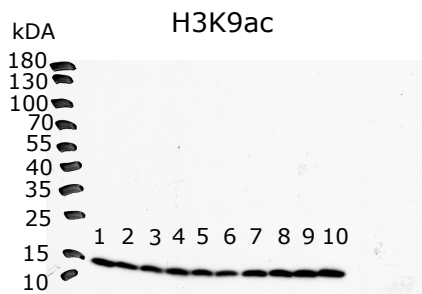
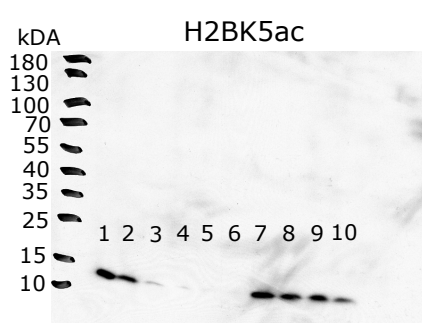
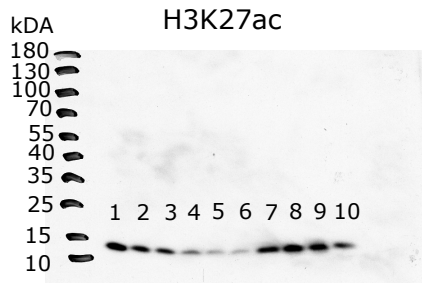
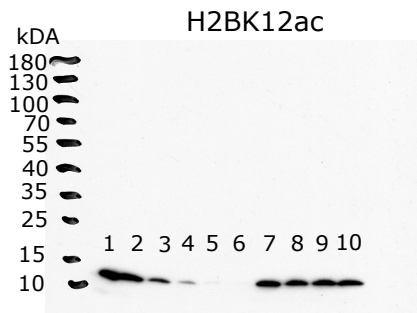
Key for all blots:

1. DMSO
2. A-485 .25 μ M
3. A-485 .75 μ M
4. A-485 1.5 μ M
5. A-485 2.25 μ M
6. A-485 3 μ M
7. GNE-049 .25 μ M
8. GNE-049 .50 μ M
9. GNE-049 .75 μ M
10. GNE-049 1 μ M

T-47D H3ac Raw Blots:
Figure 4B



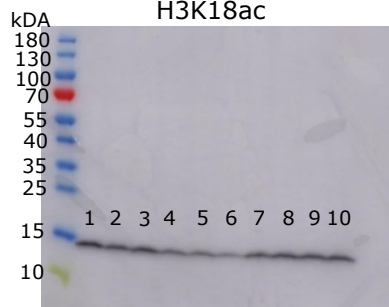
T-47D H2Bac Raw Blots:
Figure 4B



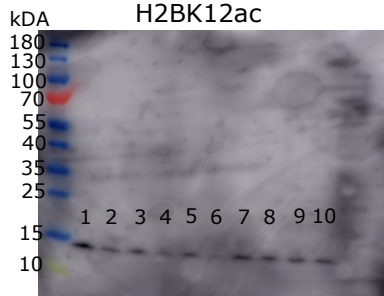
Key for all blots:

1. DMSO
2. A-485 .25 μ M
3. A-485 .75 μ M
4. A-485 1.5 μ M
5. A-485 2.25 μ M
6. A-485 3 μ M
7. GNE-049 .25 μ M
8. GNE-049 .50 μ M
9. GNE-049 .75 μ M
10. GNE-049 1 μ M

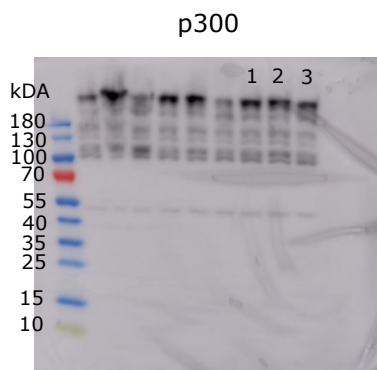
BT-474 H3ac Raw Blots:
Figure 4C
H3K18ac



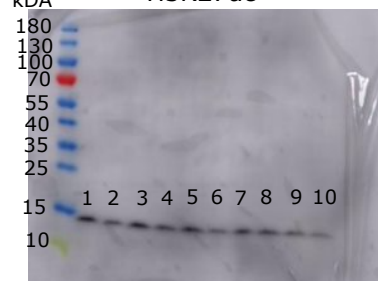
BT-474 H2Bac Raw Blots:
Figure 4C
H2BK12ac



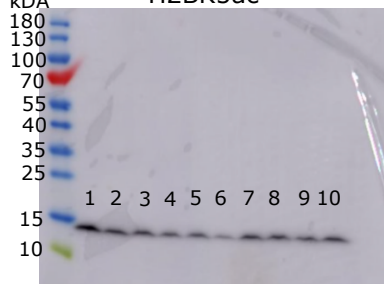
MCF-7 CBP/p300 Raw Blots:
Figure 4E



H3K27ac



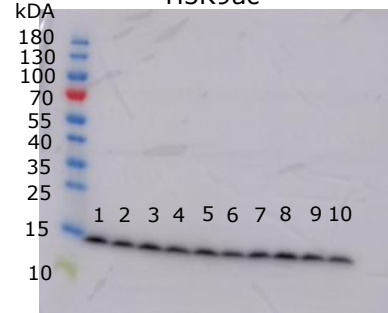
H2BK5ac



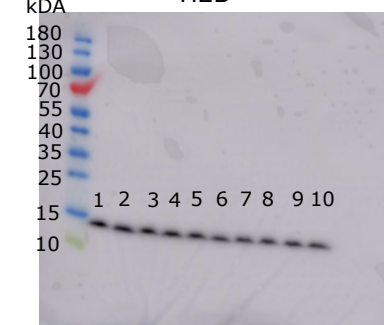
CBP



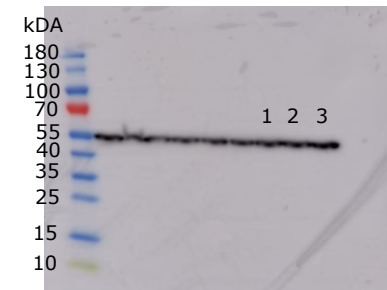
H3K9ac



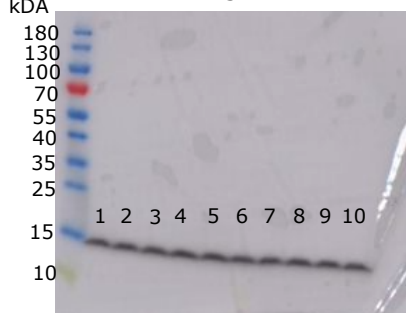
H2B



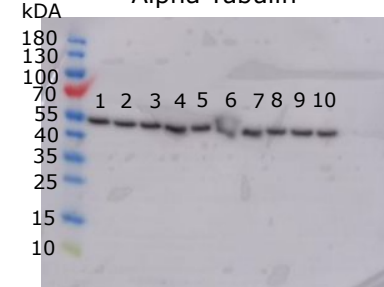
Alpha Tubulin



H3

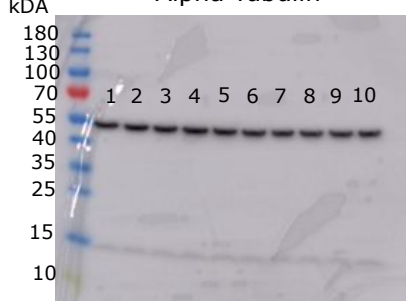


Alpha Tubulin



Key for MCF-7 blot:
1. DMSO
2. A-485 3.0 μ M
3. GNE-049 1 μ M

Alpha Tubulin



Key for BT-474 blots:

1. DMSO
2. A-485 .25 μ M
3. A-485 .75 μ M
4. A-485 1.5 μ M
5. A-485 2.25 μ M
6. A-485 3 μ M
7. GNE-049 .25 μ M
8. GNE-049 .50 μ M
9. GNE-049 .75 μ M
10. GNE-049 1 μ M