

Validation of Selected Head and Neck Cancer Prognostic Markers from the Pathology Atlas in an Oral Tongue Cancer Cohort

Anna Maria Wirsing¹, Inger-Heidi Bjerkli^{1,2}, Sonja Eriksson Steigen^{1,3}, Oddveig Rikardsen^{1,2}, Synnøve Norvoll Magnussen¹, Beate Hegge¹, Marit Seppola¹, Lars Uhlin-Hansen^{1,3} and Elin Hadler-Olsen^{1,4,*}

¹ Department of Medical Biology, Faculty of Health Sciences, UiT The Arctic University of Norway, 9037 Tromsø, Norway; anna.wirsing@uit.no (A.M.W.); Inger-heidi.bjerkli@unn.no (I.-H.B.); sonja.eriksson.steigen@unn.no (S.E.S.); oddveig.rikardsen@unn.no (O.R.); synnove.magnussen@uit.no (S.N.M.); beate.hegge@uit.no (B.H.); Marit.seppola@uit.no (M.S.); Lars.uhlin-hansen@uit.no (L.U.-H.)

² Department of Otorhinolaryngology, University Hospital of North Norway, 9038 Tromsø, Norway

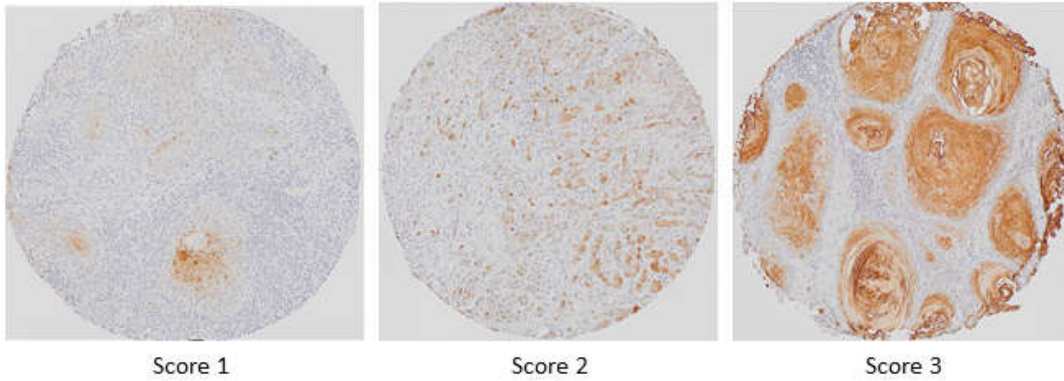
³ Department of Clinical Pathology, University Hospital of North Norway, 9038 Tromsø, Norway

⁴ The Public Dental Health Service Competence Centre of Northern Norway, 9019 Tromsø, Norway

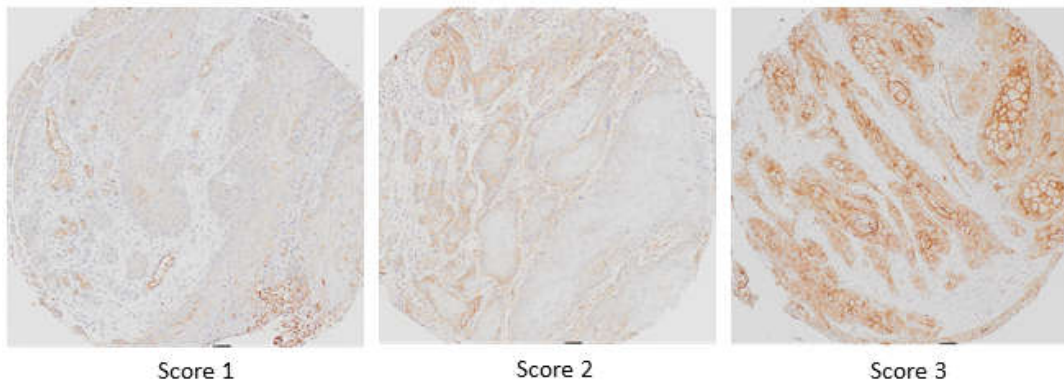
* Correspondence: elin.hadler-olsen@uit.no; Tel.: +47-48-06-72-49

Supplementary figures

CALML5



CD59



LIMA1

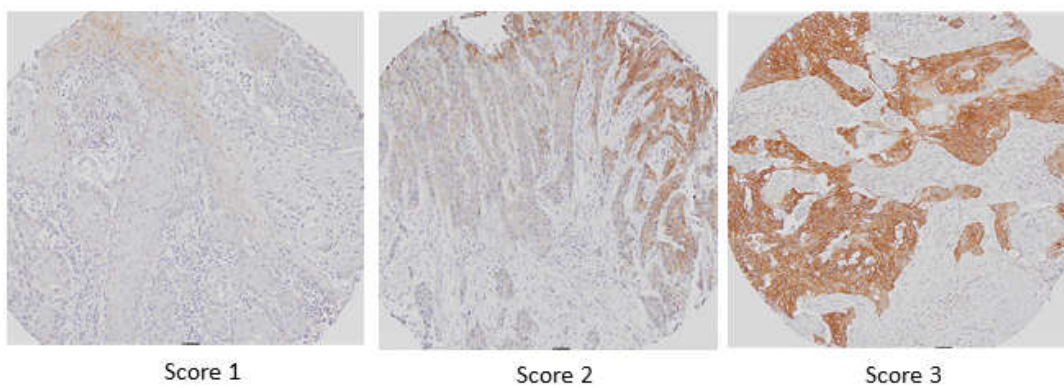


Figure S1. Representative immunohistochemical staining and scoring for CALML5, CD59 and LIMA1. Scores were assigned based on proportion of positively stained tumour cells: no staining (0), positive staining in less than 25% of the tumour cells (1), positive staining in 25-50 % of the tumour cells (2) or staining in > 50% of the tumour cells (3).

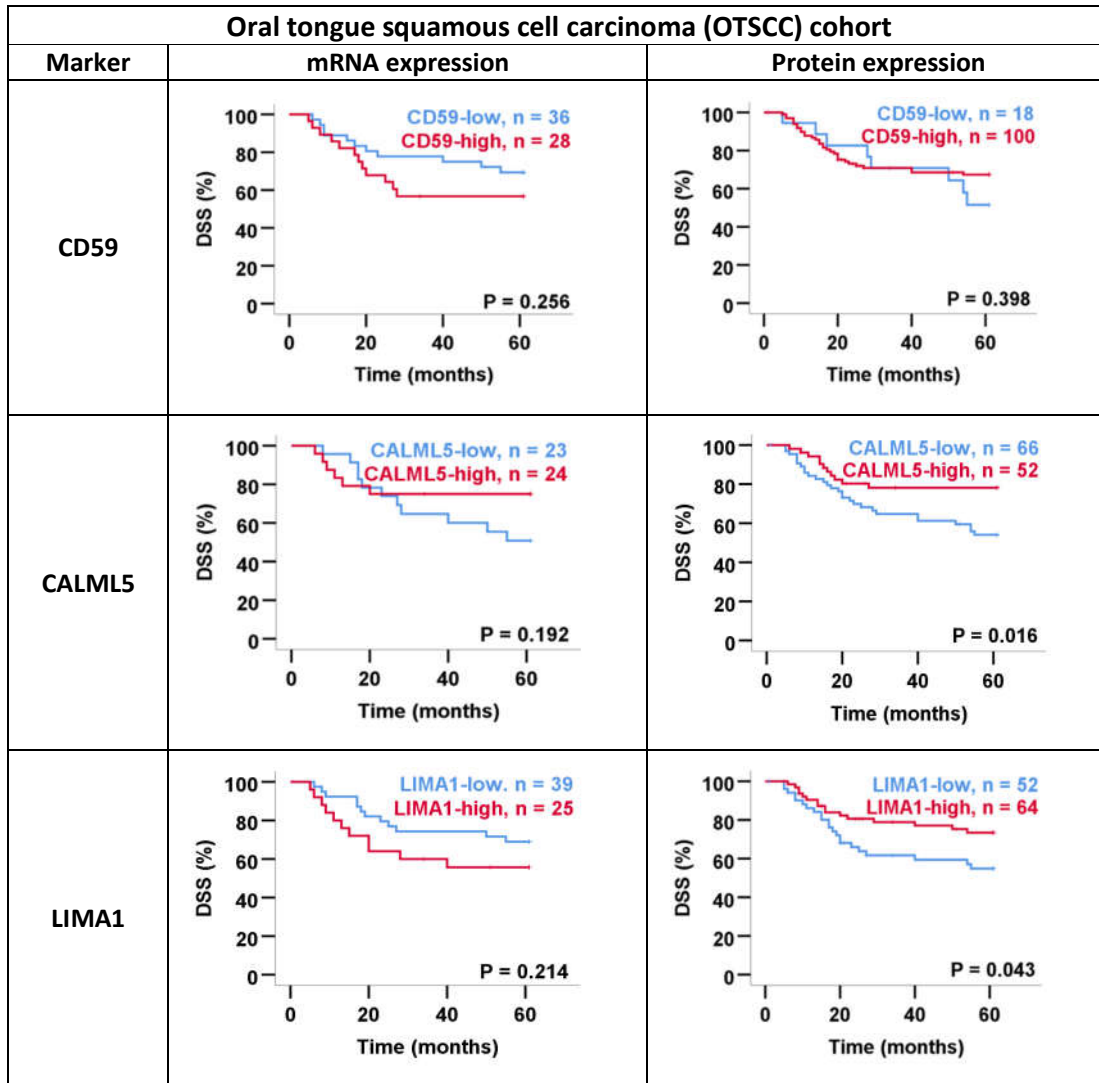


Figure S2. Kaplan-Meier curves for 5-year disease-specific survival. Target protein and mRNA expression in the oral tongue squamous cell carcinoma cohort using best separation cutoff (median for all except CD59 protein, which was 25%), and their association with 5-year disease-specific survival (DSS) in Kaplan-Meier analysis. The p-value was calculated using the log-rank test, with the significance level set to 0.05.

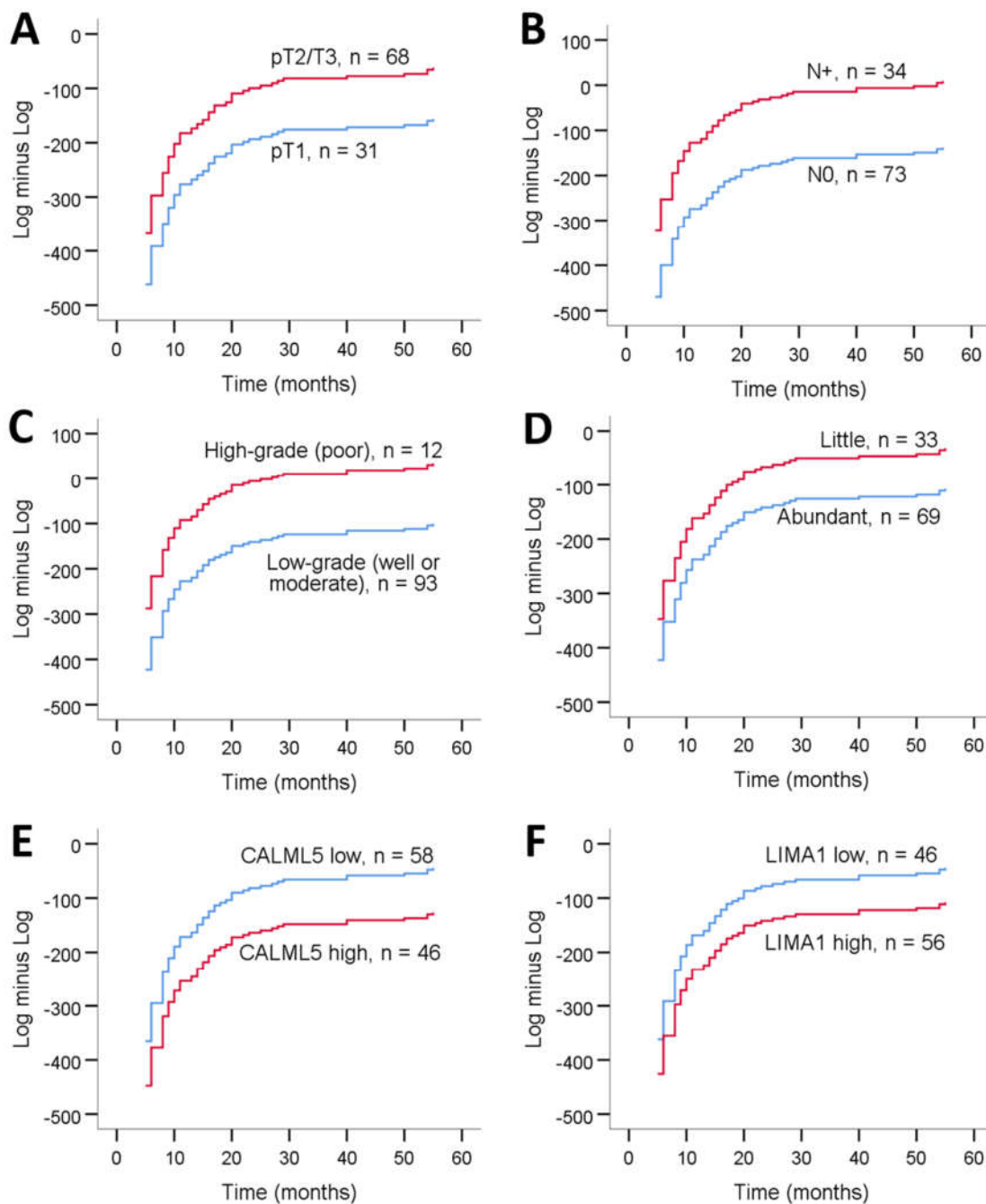


Figure S3. Log minus log plots for proportional hazards checking. A) pT status, B) N status, C) differentiation of whole tumour, D) lymphocyte infiltration, E) CALML5 protein expression, F) LIMA1 protein expression.

Supplementary tables

Table S1. Reasoning behind selection of prognostic markers for Head and neck cancer in the Pathology Atlas to validate in a cohort of oral tongue cancer.

Marker	Associated with tumour cells	HPA-validated antibody available	Expression pattern IHC	Conclusion
DKK1	Unknown	No	No information	Excluded
LIMA1	Yes	Yes	Intracellular	Included
CD59	Yes	Yes	Intracellular, membrane	Included
GZMM	No	Yes	Intracellular, secreted	Excluded
CCR7	No	Yes	Membrane	Excluded
CALML5	Yes	Yes	Intracellular	Included