

Supplementary

Histone Methyltransferase G9a-Promoted Progression of Hepatocellular Carcinoma Is Targeted by Liver-Specific Has-miR-122

Lan-Ting Yuan et al.

Citation: Yuan, L.-T.; Lee, W.-J.; Yang, Y.-C.; Chen, B.-R.; Yang, C.-Y.; Chen, M.-W.; Chen, J.-Q.; Hsiao, M.; Chien, M.-H.; Hua, K.-T.; et al. Histone Methyltransferase G9a-Promoted Progression of Hepatocellular Carcinoma Is Targeted by Liver-Specific Hsa-miR-122. *Cancers* **2021**, *13*, 2376. <https://doi.org/10.3390/cancers13102376>

Academic Editor: Takahiro Kodama

Received: 30 March 2021

Accepted: 11 May 2021

Published: 14 May 2021

Publisher's Note: MDPI stays neutral with regard to jurisdictional claims in published maps and institutional affiliations.



Copyright: © 2021 by the authors. Licensee MDPI, Basel, Switzerland. This article is an open access article distributed under the terms and conditions of the Creative Commons Attribution (CC BY) license (<http://creativecommons.org/licenses/by/4.0/>).

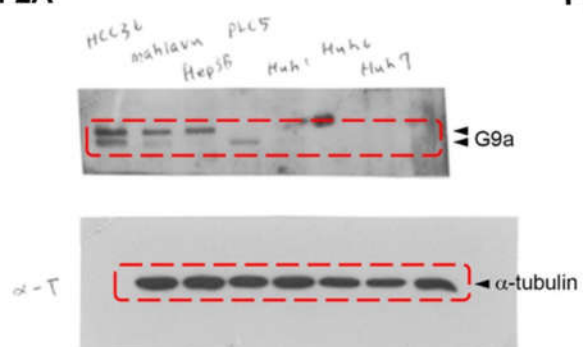
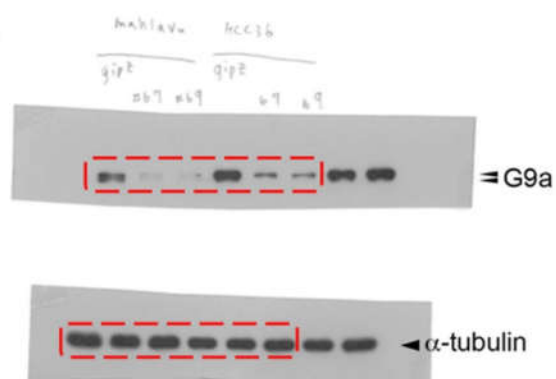
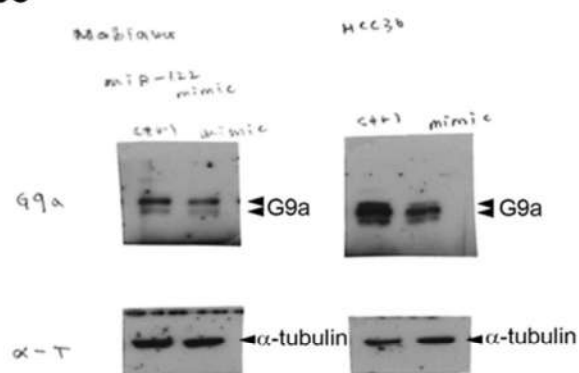
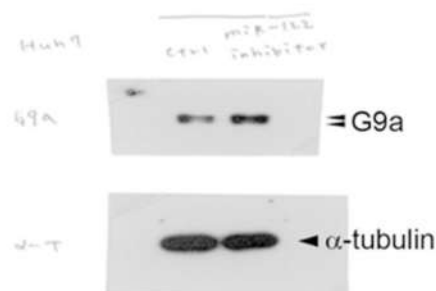
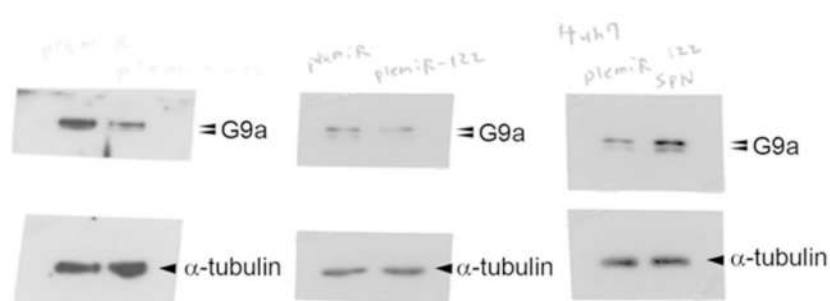
Fig. 2A**Fig. 2B****Fig. 5C****Fig. 5D****Fig. 5F****Figure S1.** Uncropped blots used in main figures.

Table 1. Primer and probe sequences used for quantitative PCR.

Gene	Primer sequences (5'-3')
<i>G9a/EHMT2</i>	(F) GGAGCCACGAGGGGTGTCCA (R) CGGCATTGCAGCCTGACAGC
<i>ACTIN</i>	(F) GGCGGCACCACCATGTACCCT (R) AGGGGCCCGACTCGTCATACT
Gene	Probe sequences (5'-3')
<i>has-miR-122</i>	UGGAGUGUGACAAUGGUGUUUG (AB Assay ID 002245)
<i>RUN6B</i>	CGCAAGGATGACACGCAAATTCGTG AAGCGTTCCATATTTTT (AB Assay ID 001093)

Table S2. The correlation between CpG methylation and G9a gene expression.

CpG sites*	Spearman's coefficient of rank correlation (rho) (95%CI)	Significance
cg07829740	−0.356 (−0.442 to −0.264)	$p < 0.0001$
cg07498938	−0.297 (−0.387 to −0.201)	$p < 0.0001$
cg21190306	−0.29 (−0.380 to −0.194)	$p < 0.0001$
cg02758274	−0.282 (−0.373 to −0.185)	$p < 0.0001$
cg08848598	−0.28 (−0.371 to −0.183)	$p < 0.0001$
cg21087321	−0.276 (−0.367 to −0.179)	$p < 0.0001$
cg07898120	−0.273 (−0.364 to −0.176)	$p < 0.0001$
cg17756143	−0.271 (−0.362 to −0.174)	$p < 0.0001$
cg03146965	−0.262 (−0.355 to −0.165)	$p < 0.0001$
cg27363691	−0.261 (−0.353 to −0.163)	$p < 0.0001$
cg22240884	−0.259 (−0.352 to −0.162)	$p < 0.0001$
cg04637007	−0.258 (−0.351 to −0.160)	$p < 0.0001$
cg21831287	−0.255 (−0.347 to −0.157)	$p < 0.0001$
cg03164052	−0.254 (−0.346 to −0.156)	$p < 0.0001$
cg03945301	−0.253 (−0.346 to −0.155)	$p < 0.0001$
cg19770715	−0.252 (−0.345 to −0.154)	$p < 0.0001$
cg21356750	−0.251 (−0.344 to −0.153)	$p < 0.0001$

* The CpG sites within G9a promoter region and gene locus with $\rho < -0.25$ and $p < 0.0001$ are shown.