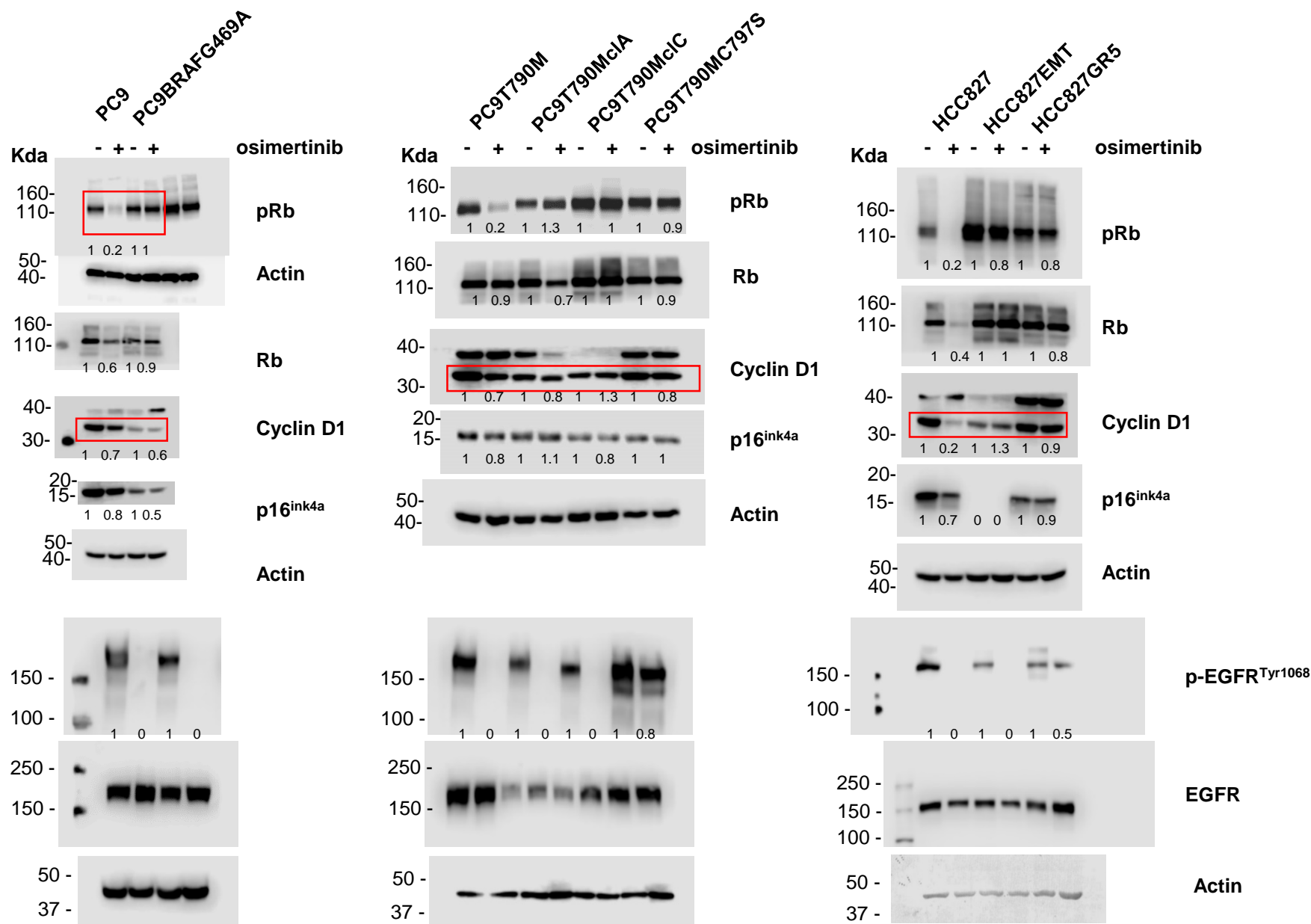
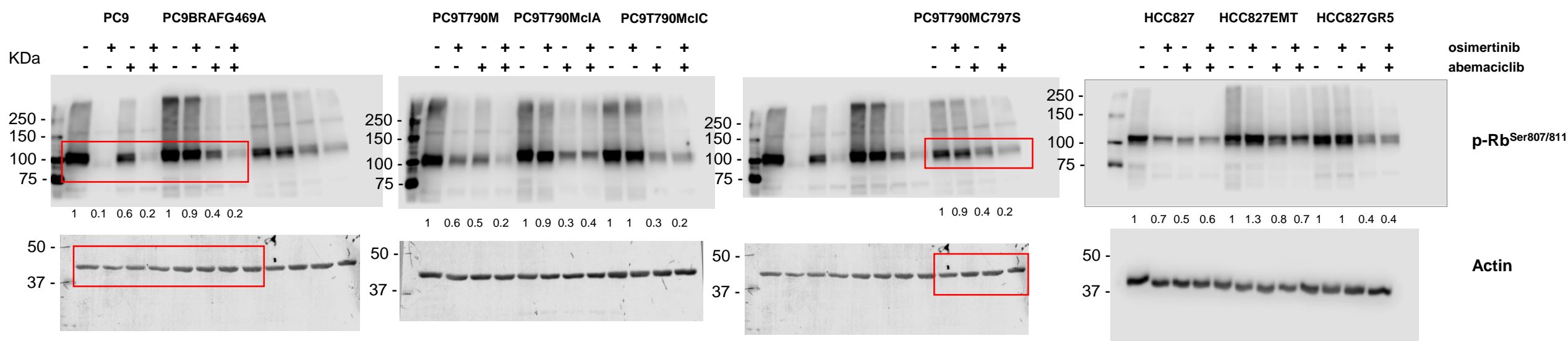
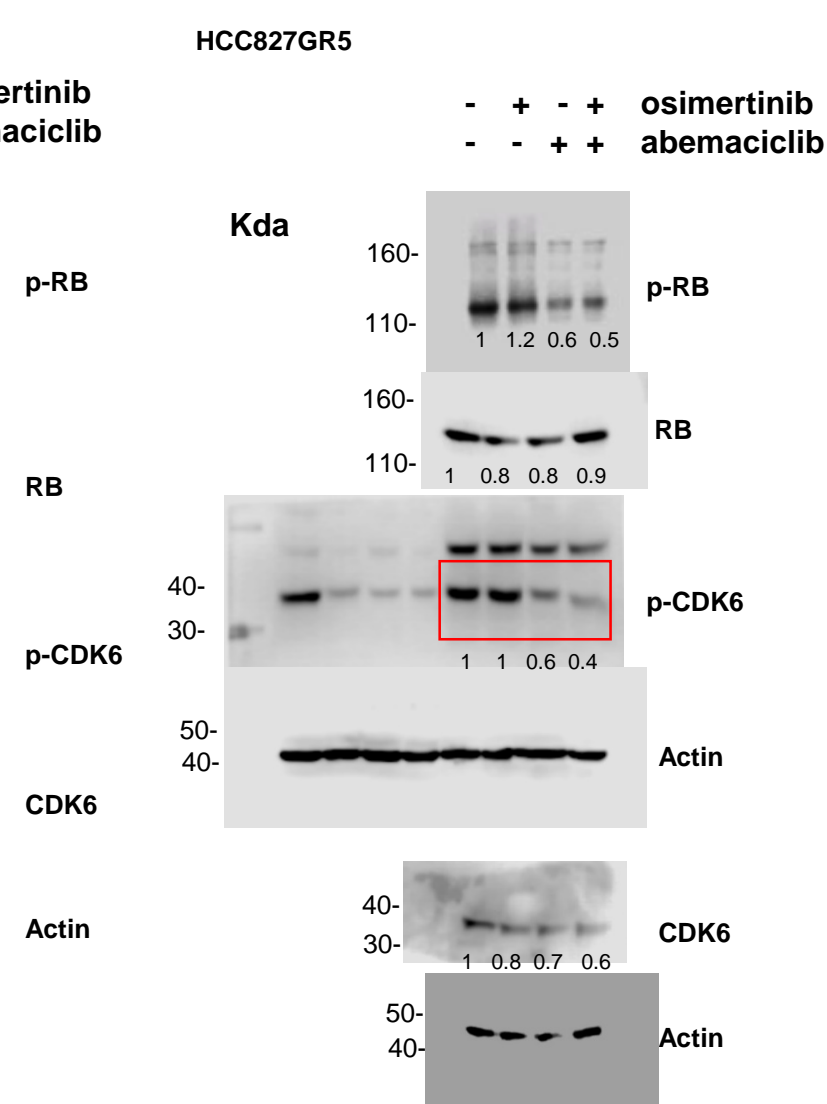
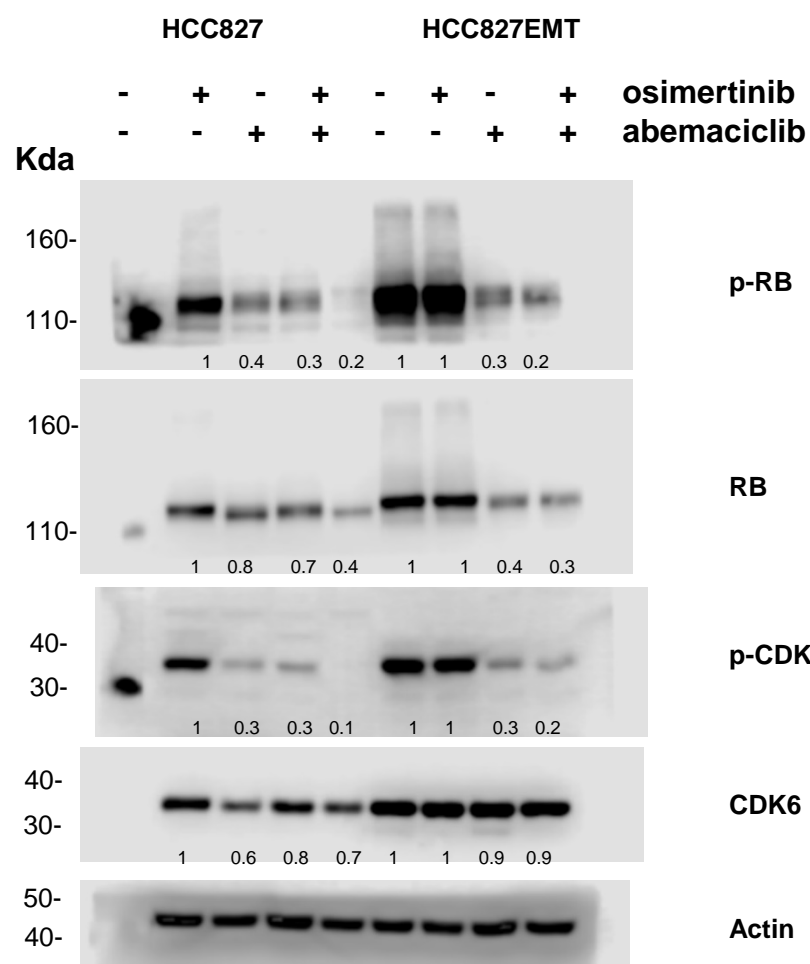
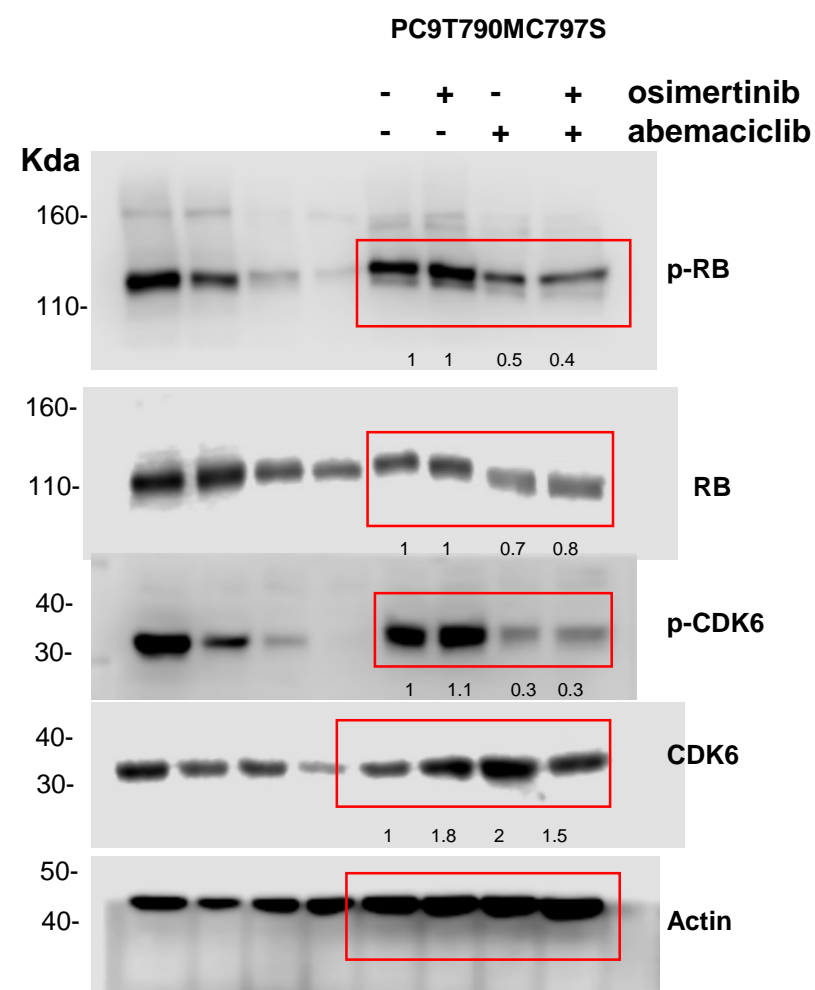
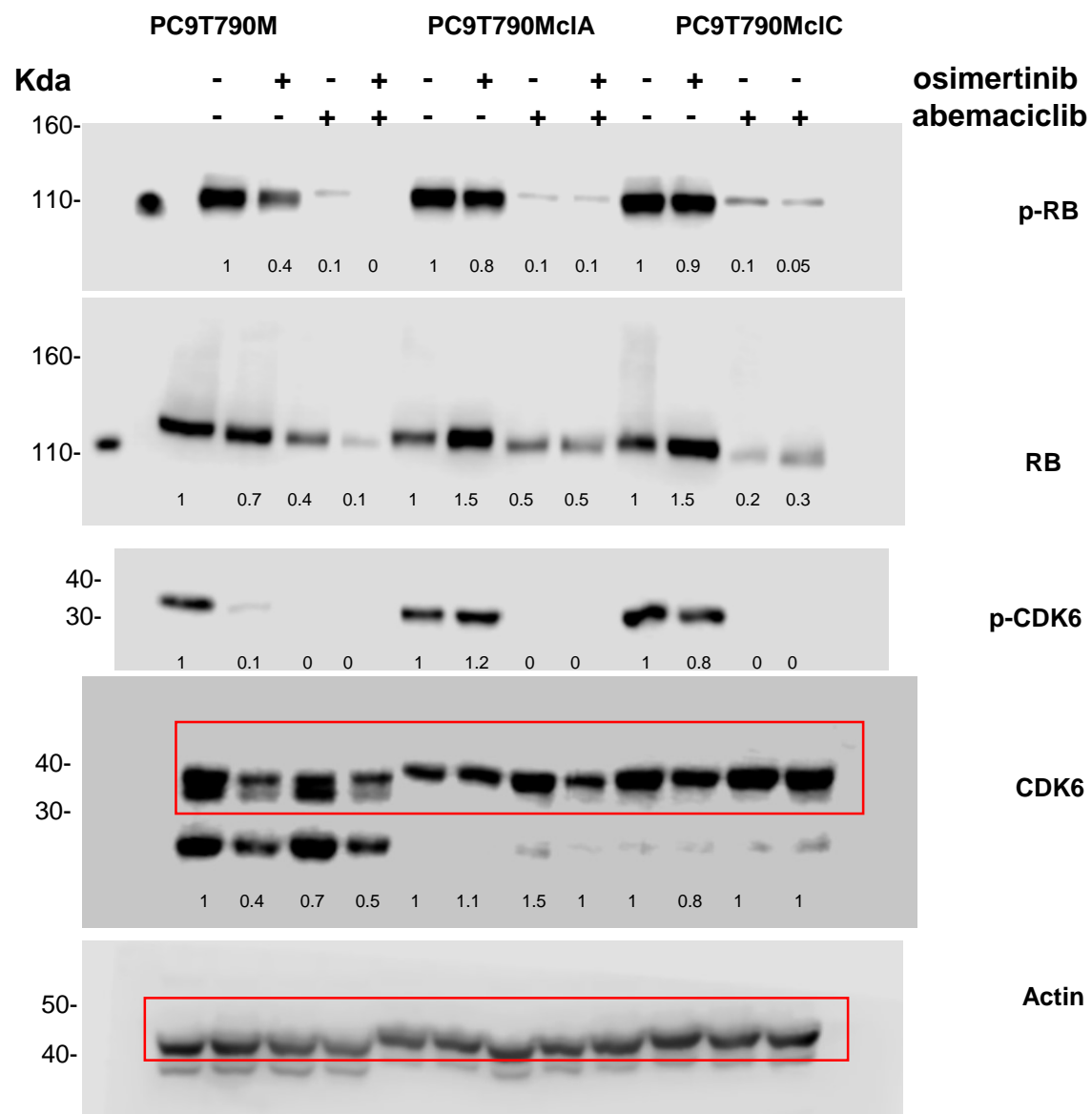
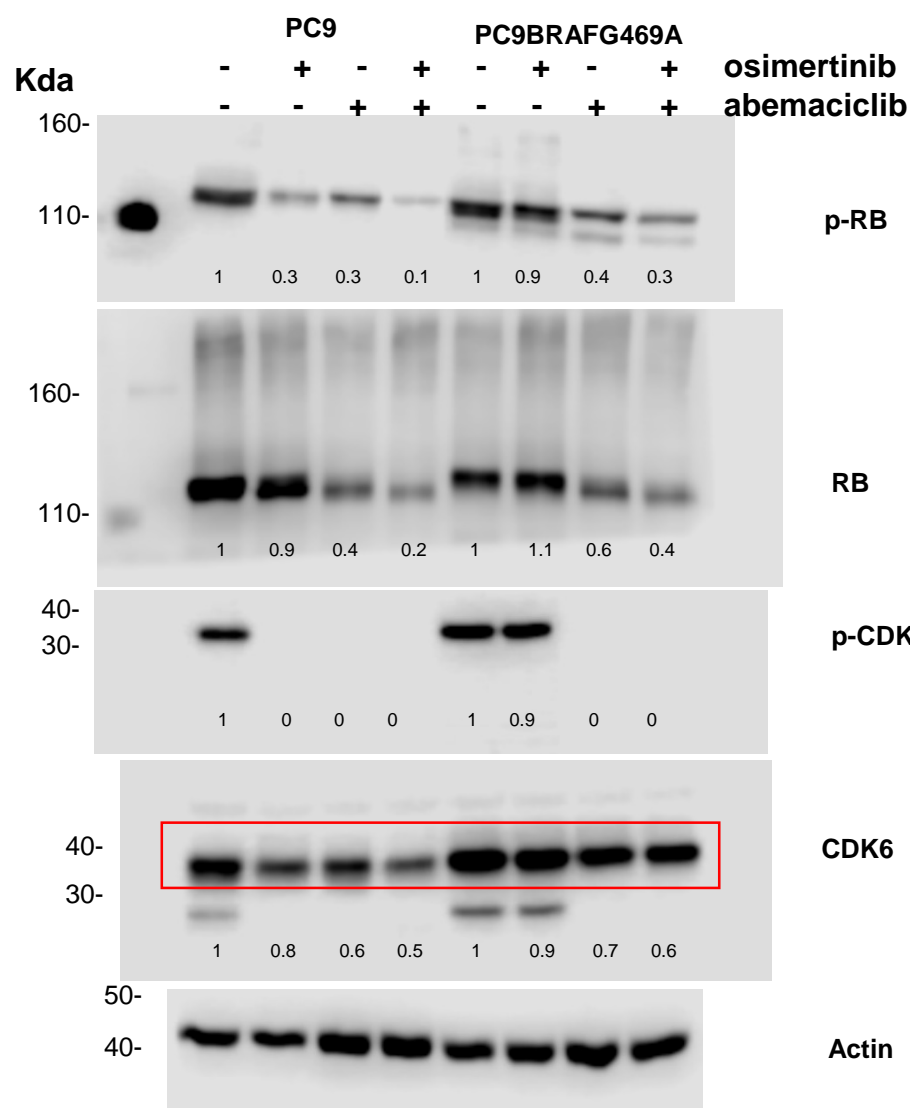


Full original blots used for Figure 1B. Each blot membrane was cut based on the standard band positions and then incubated with the corresponding antibodies.



Full original blots used for Figure 4. Each blot membrane was cut based on the standard band positions and then incubated with the corresponding antibodies.



Full original blots used for Figure 5C. Each blot membrane was cut based on the standard band positions and then incubated with the corresponding antibodies.

