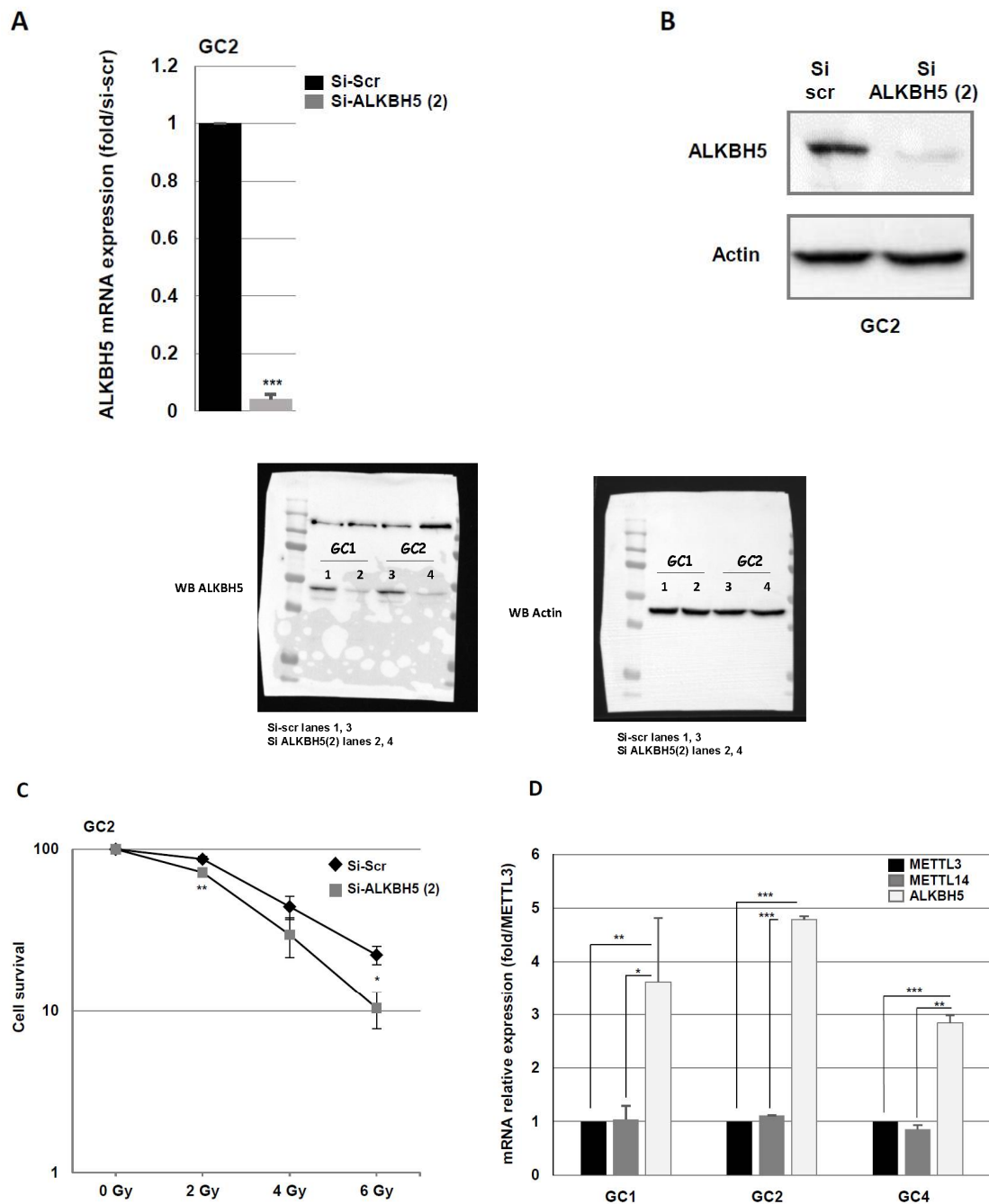


The m6A RNA Demethylase ALKBH5 Promotes Radioresistance and Invasion Capability of Glioma Stem Cells

Aline Kowalski-Chauvel, Marie Géraldine Lacore, Florent Arnauduc, Caroline Delmas, Christine Toulas, Elizabeth Cohen-Jonathan-Moyal and Catherine Seva



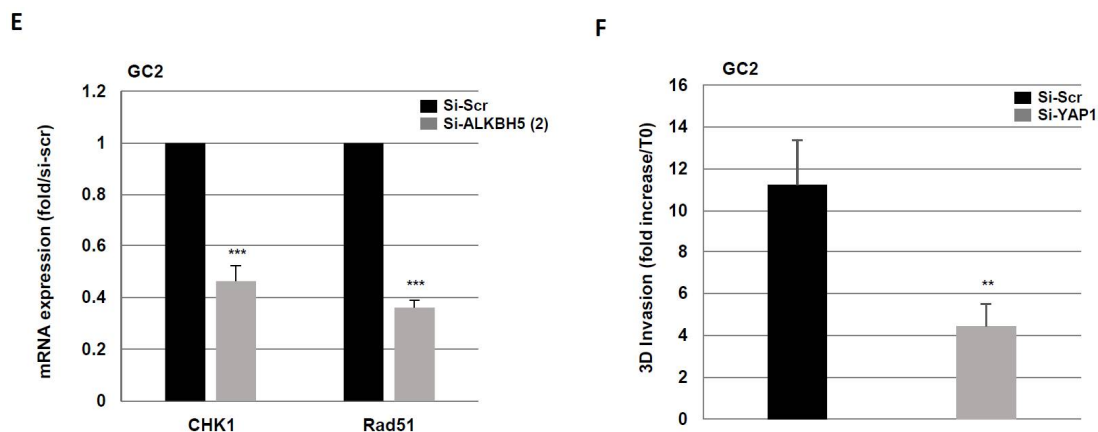


Figure S1. (A–E) Checking of a potential off target effect with ALKBH5 siRNA. GC2 primary neurospheres were transfected with a specific siRNA (si-ALKBH5 (2)) or a scramble control (si-Scr) as indicated. ALKBH5, CHK1 or Rad51 expression was analyzed by (A,E) real time PCR or (B) western blot. (C) Cells were analyzed in 3D clonogenic assays as described in “Methods”. (D) Methylases/Demethylases expression in GBMSC. METTL3/METTL14 and ALKBH5 expression was analyzed by real time PCR in primary neurospheres from 3 different patients (GC1, GC2, GC4). (F) 3D invasion using YAP1 siRNA. Quantification of 3D tumor cells invasion was performed with GC2 primary neurospheres as described in “Methods”. Quantifications of 3 experiments are presented as means \pm SD. *** $p < 0.001$; ** $0.001 < p < 0.01$; * $0.01 < p < 0.05$.

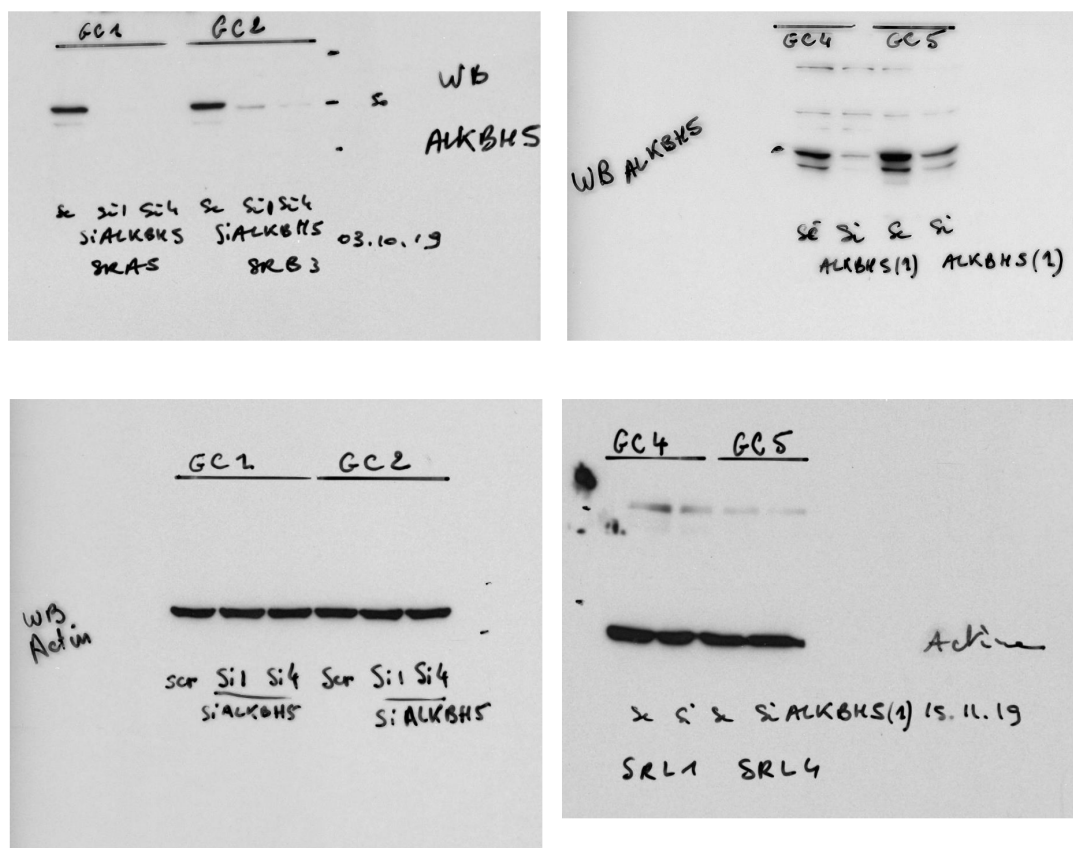


Figure S2. Original western blot gels for Figure 1B.

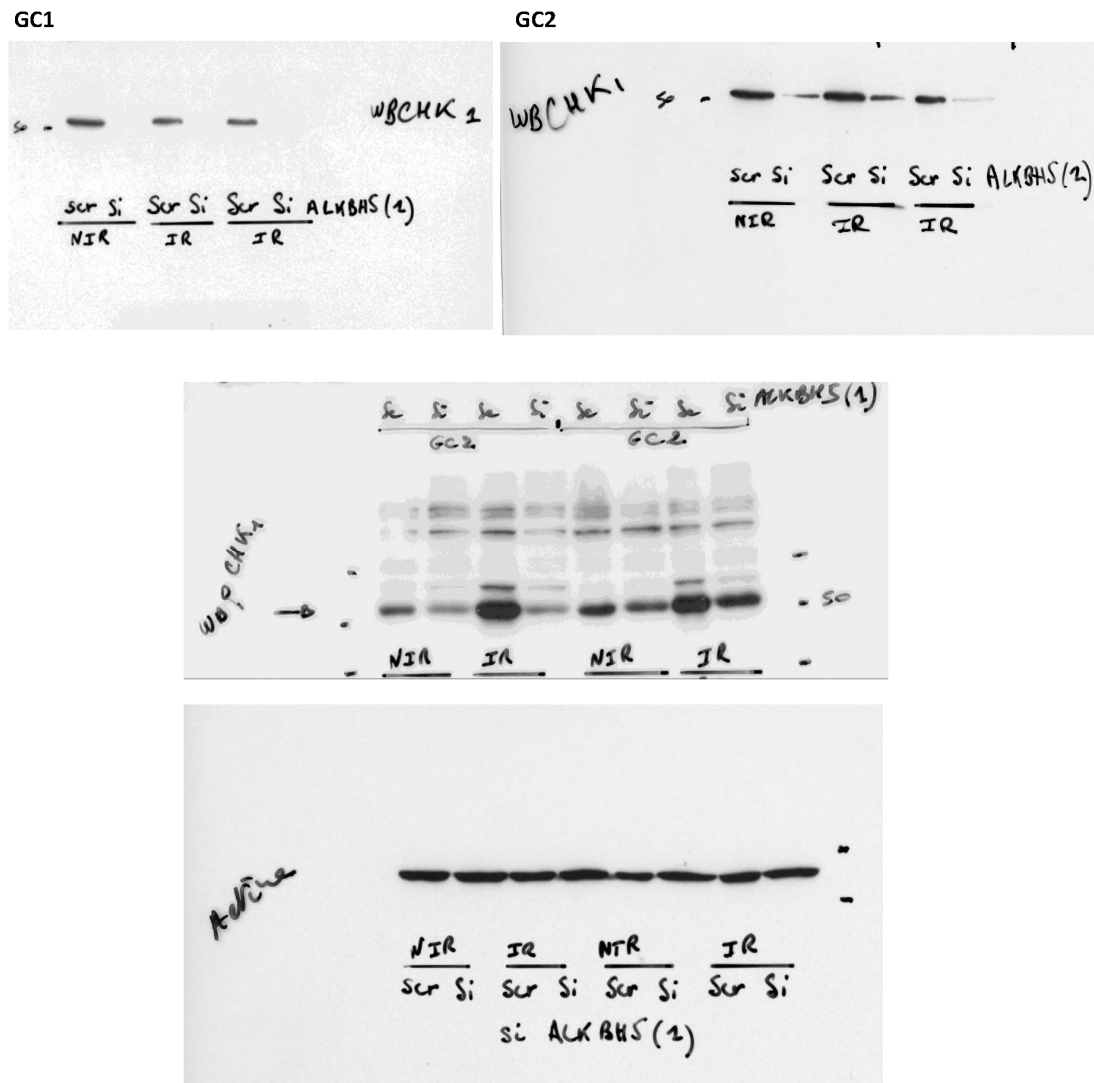
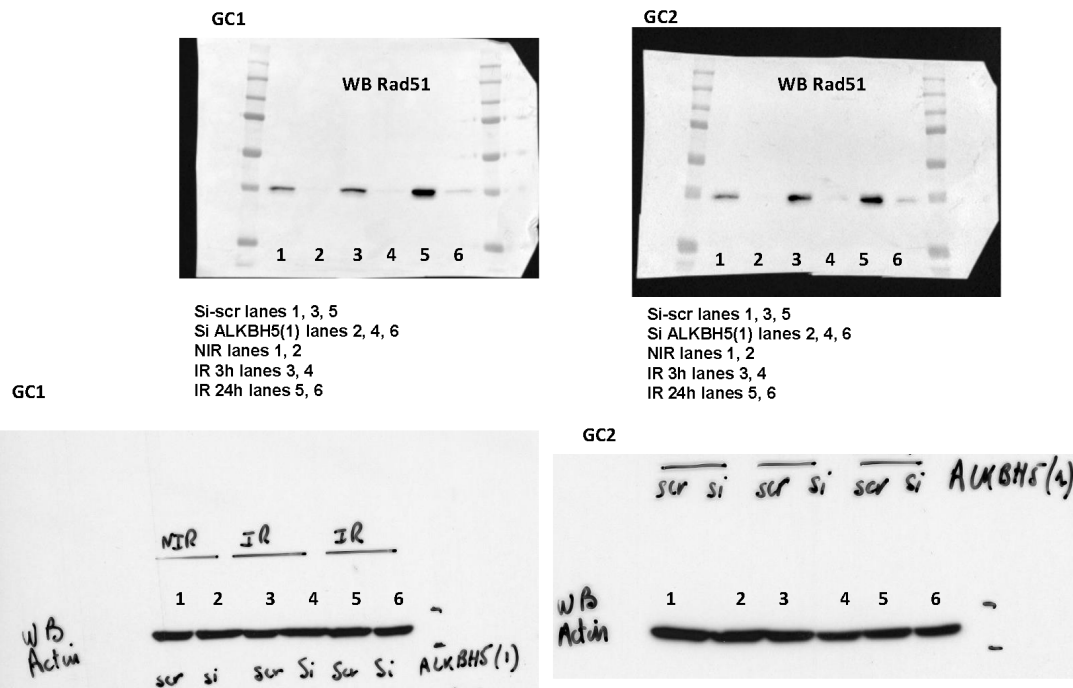


Figure S3. Original western blot gels for Figure 2B.

Original gels for Figure 4A



Original gels for Figure 4B

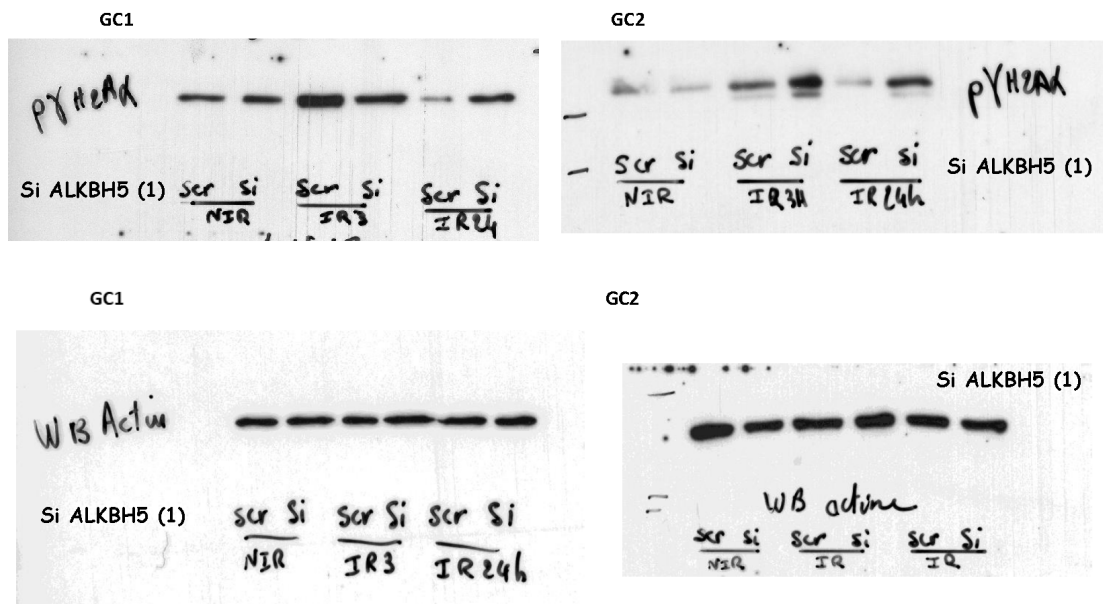


Figure S4. Original western blot gels for Figures 4A,B.

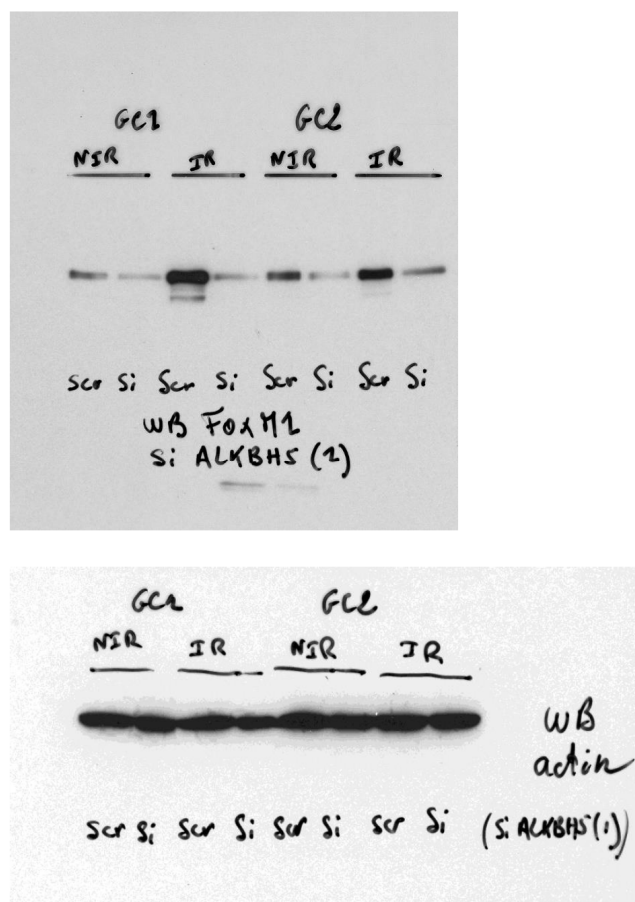


Figure S5. Original western blot gels for Figure 4C.

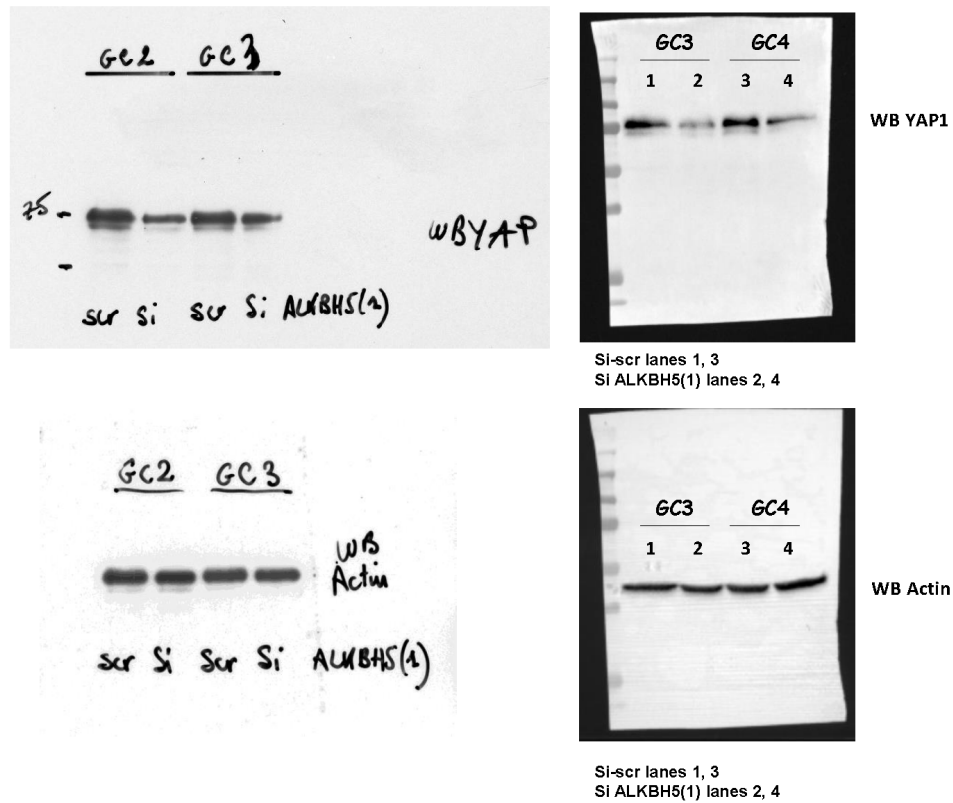


Figure S6. Original western blot gels for Figure 6C.



Copyright: © 2020 by the authors. Licensee MDPI, Basel, Switzerland. This article is an open access article distributed under the terms and conditions of the Creative Commons Attribution (CC BY) license (<http://creativecommons.org/licenses/by/4.0/>).