

Article

Supplementary Materials: High-dimensional analysis of single-cell flow cytometry data predicts relapse in Childhood Acute Lymphoblastic Leukemia

Salvador Chulián, Álvaro Martínez-Rubio, Víctor M. Pérez-García, María Rosa, Cristina Blázquez Goñi, Juan Francisco Rodríguez Gutiérrez, Lourdes Hermosín-Ramos, Águeda Molinos Quintana, Teresa Caballero-Velázquez, Manuel Ramírez-Orellana, Ana Castillo Robleda, Juan Luis Fernández-Martínez

* Correspondence: victor.perezgarcia@uclm.es

Version December 2, 2020 submitted to Cancers

1 List of Figures

| | | | |
|---|----|---|---|
| 2 | S1 | Mean of immunophenotypic markers for relapse and non-relapse patients. | 3 |
| 3 | S2 | Standard deviation of immunophenotypic markers for relapse and non-relapse patients. | 4 |
| 4 | S3 | Markers with significant differences in parameters coming from intensity profiles fitting | 5 |
| 5 | S4 | Example of curve fitting of CD38 expression | 5 |

- © 2020 by the authors. Submitted to *Cancers* for possible open access publication under the terms and conditions of the Creative Commons Attribution (CC BY) license (<http://creativecommons.org/licenses/by/4.0/>).

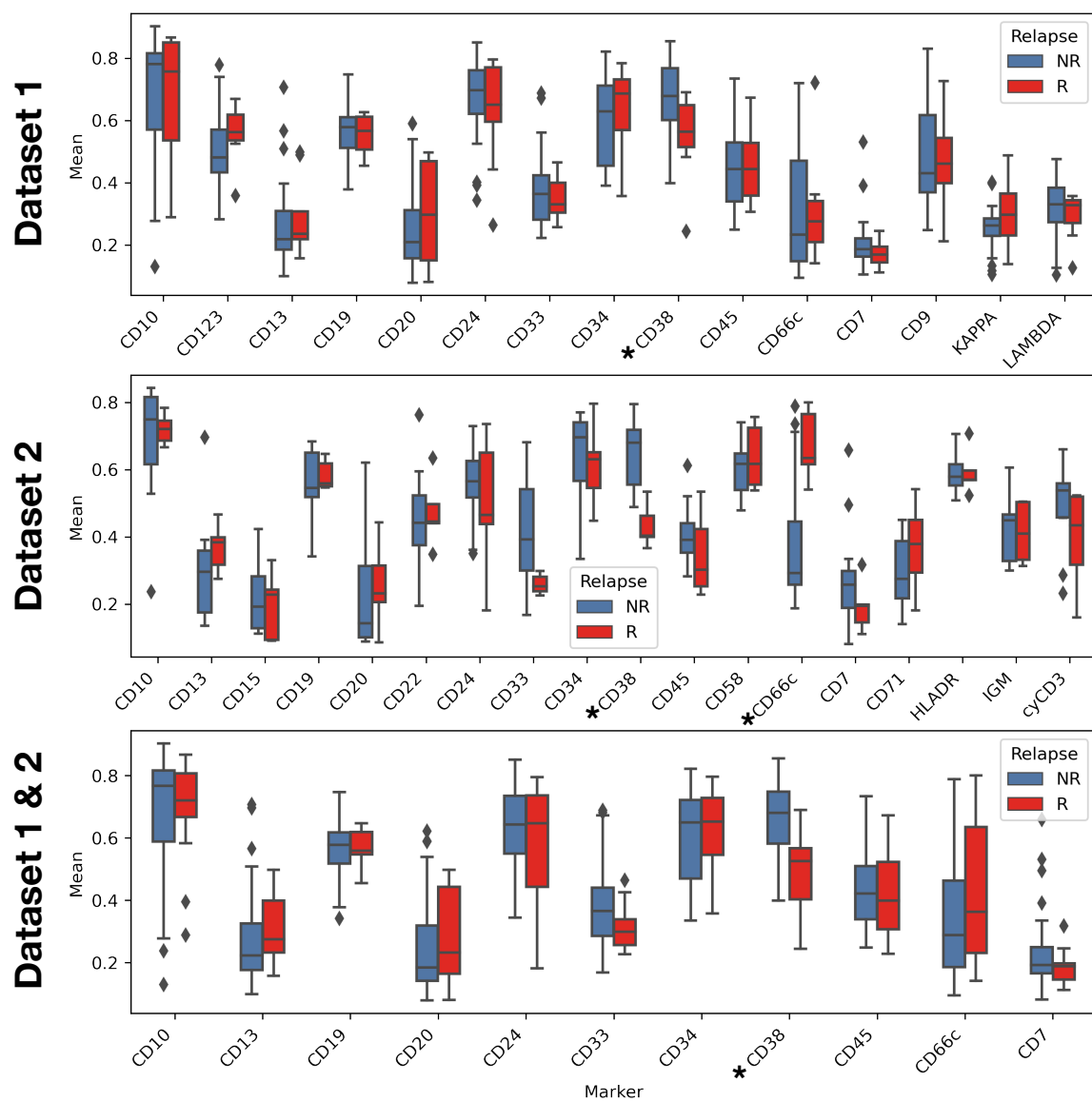


Figure S1. Mean of immunophenotypic markers for relapse and non-relapse patients. Comparison was performed via t-test and markers with differences and p-value lower than 0.05 are marked with *.

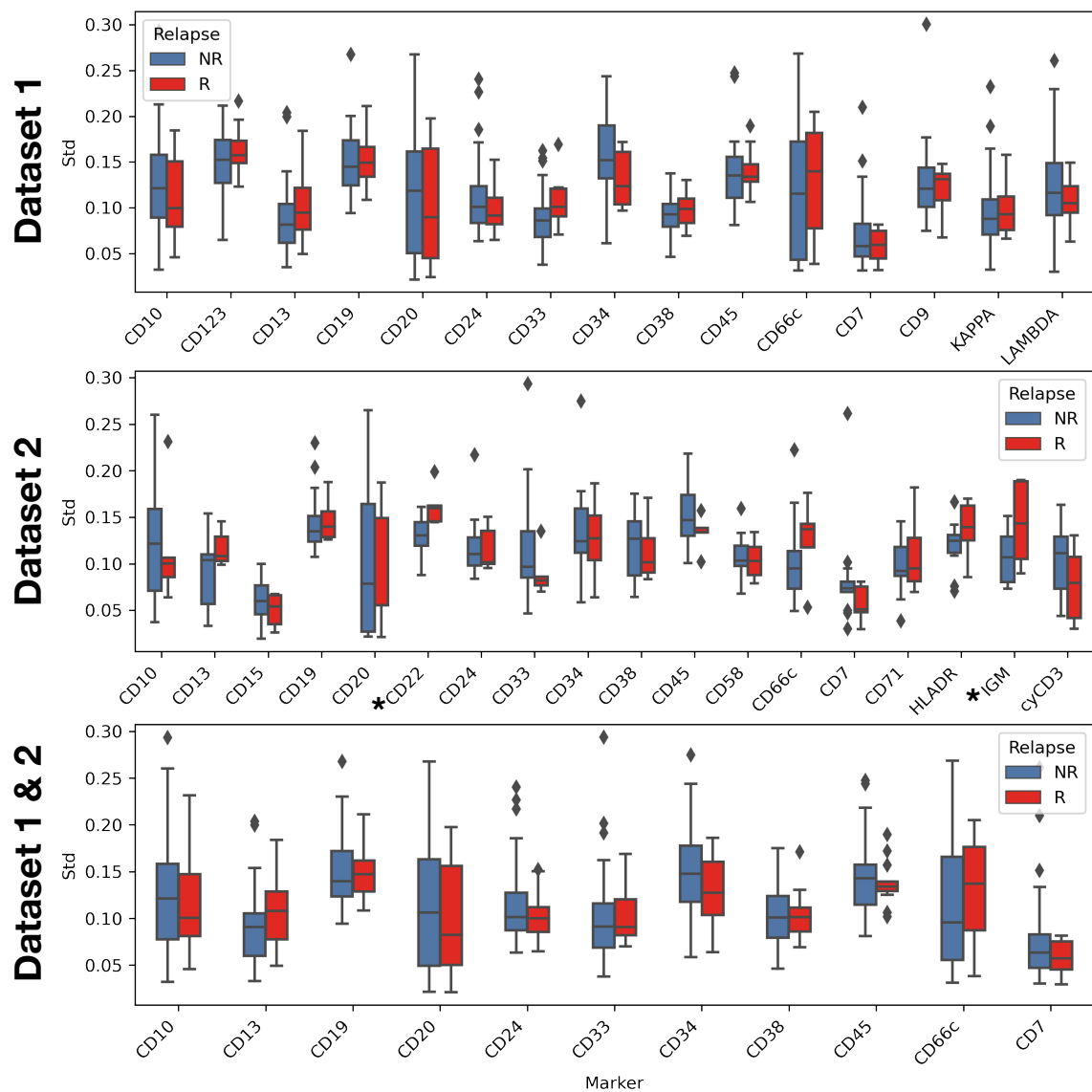


Figure S2. Standard deviation of immunophenotypic markers for relapse and non-relapse patients. Comparison was performed via t-test and markers with differences and p-value lower than 0.05 are marked with *.

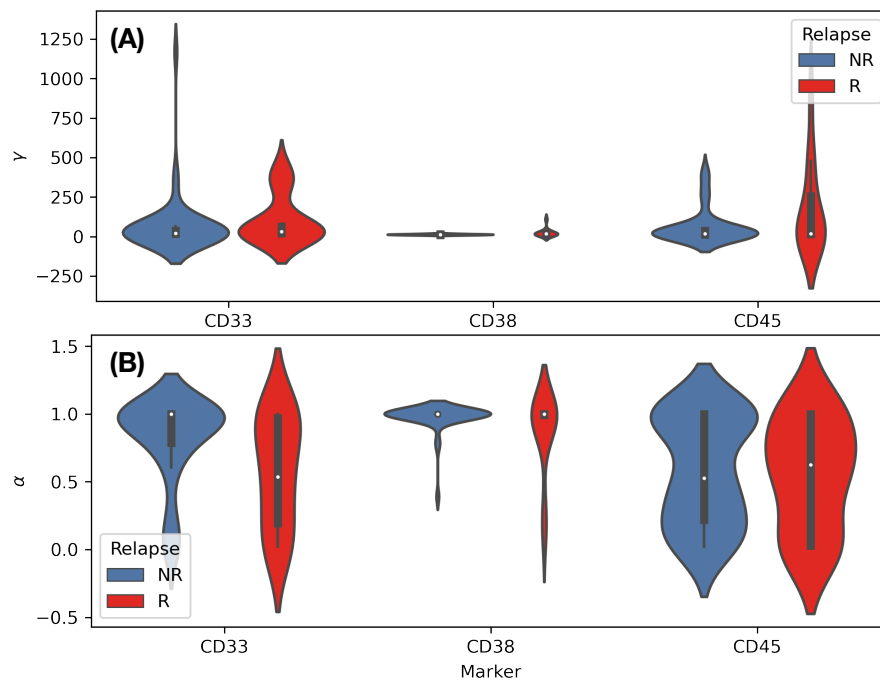


Figure S3. Markers with significant differences in parameters coming from intensity profiles fitting. (A) Differences for parameter γ in CD33, CD38 and CD45. (B) Differences for parameter α in CD33, CD38 and CD45. White dots represents median and black range represent first and third quartile.

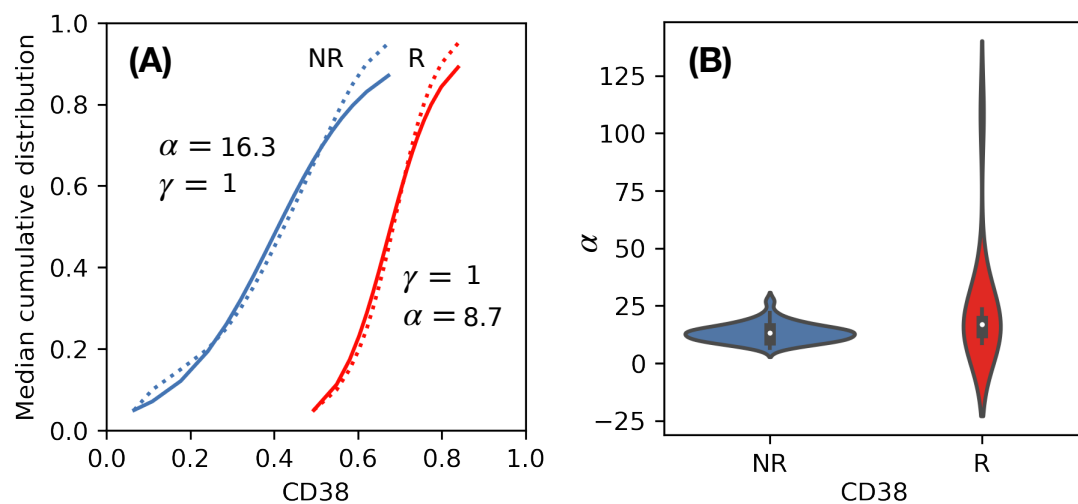


Figure S4. Example of curve fitting of CD38 expression. (A) Example of curve fitting for non-relapse and relapse patients. Parameters of the respective fits are included. (B) Differences for parameter α in CD38. We note that although having different parameter α this does not allow to distinguish between relapse and non-relapse patients.