

Article

# HSP90 Inhibitor, 17-DMAG, Alone and in Combination with Lapatinib Attenuates Acquired Lapatinib-Resistance in ER-positive, HER2-Overexpressing Breast Cancer Cell Line

Hye Jin Lee <sup>1</sup>, Seungho Shin <sup>2</sup>, Jinho Kang <sup>1</sup>, Ki-Cheol Han <sup>3</sup>, Yeul Hong Kim <sup>1</sup>, Jeoung-Won Bae <sup>2</sup> and Kyong Hwa Park <sup>1,\*</sup>

<sup>1</sup> Division of Oncology/Hematology, Department of Internal Medicine, Korea University College Medicine, Seoul 02841, Korea; lhj5727@korea.ac.kr (H.J.L.); chinhokang@naver.com (J.K.); yhk0215@korea.ac.kr (Y.H.K.)

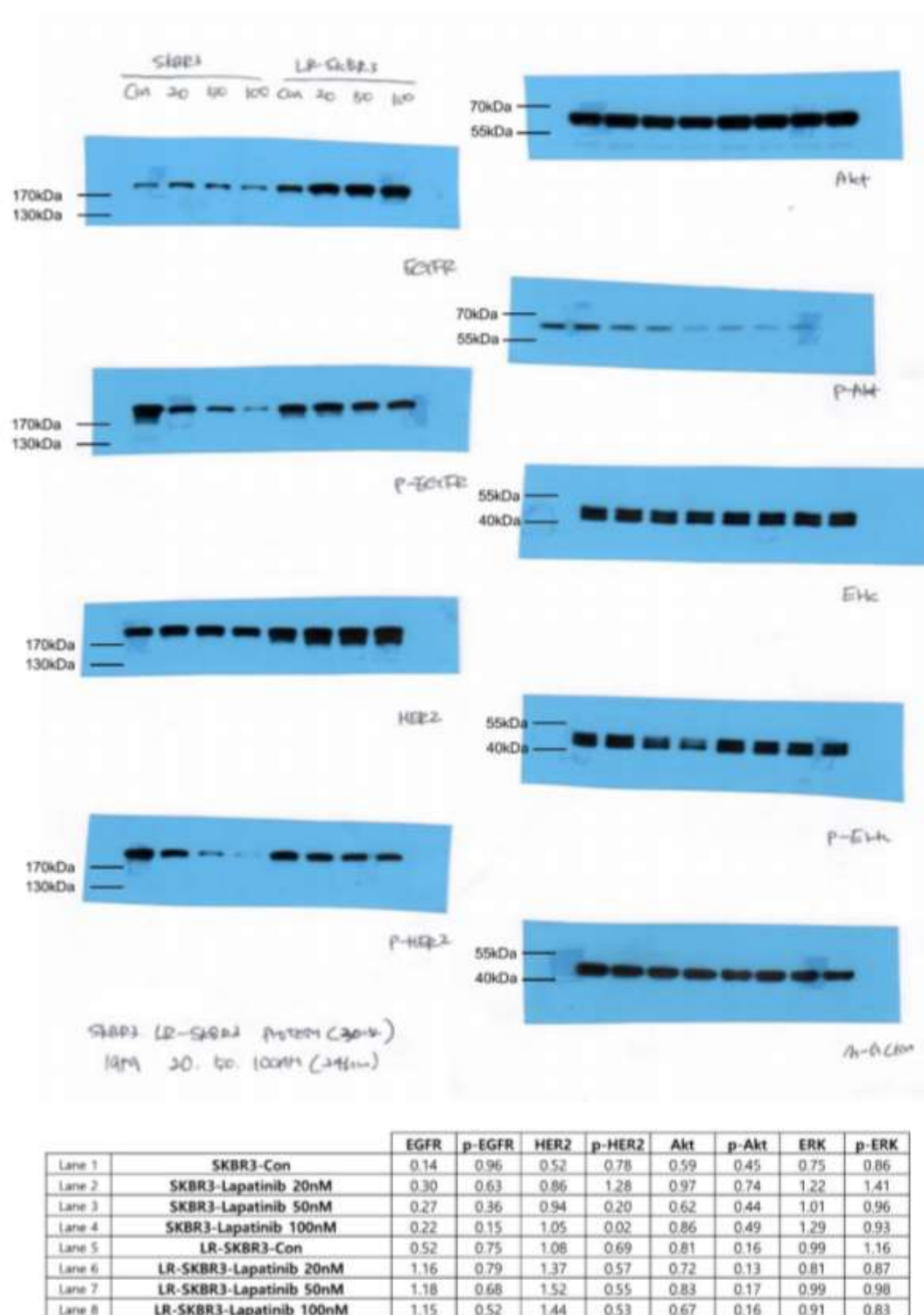
<sup>2</sup> Departments of Breast and Endocrine surgery, Korea University College Medicine, Seoul 02841, Korea; sshhere@naver.com (S.S.); kujwbae@korea.ac.kr (J.-W.B.)

<sup>3</sup> Center for Theragnosis, Biomedical Research Institute, Korea Institute of Science and Technology, Seoul 02456, Korea; biolord@kist.re.kr

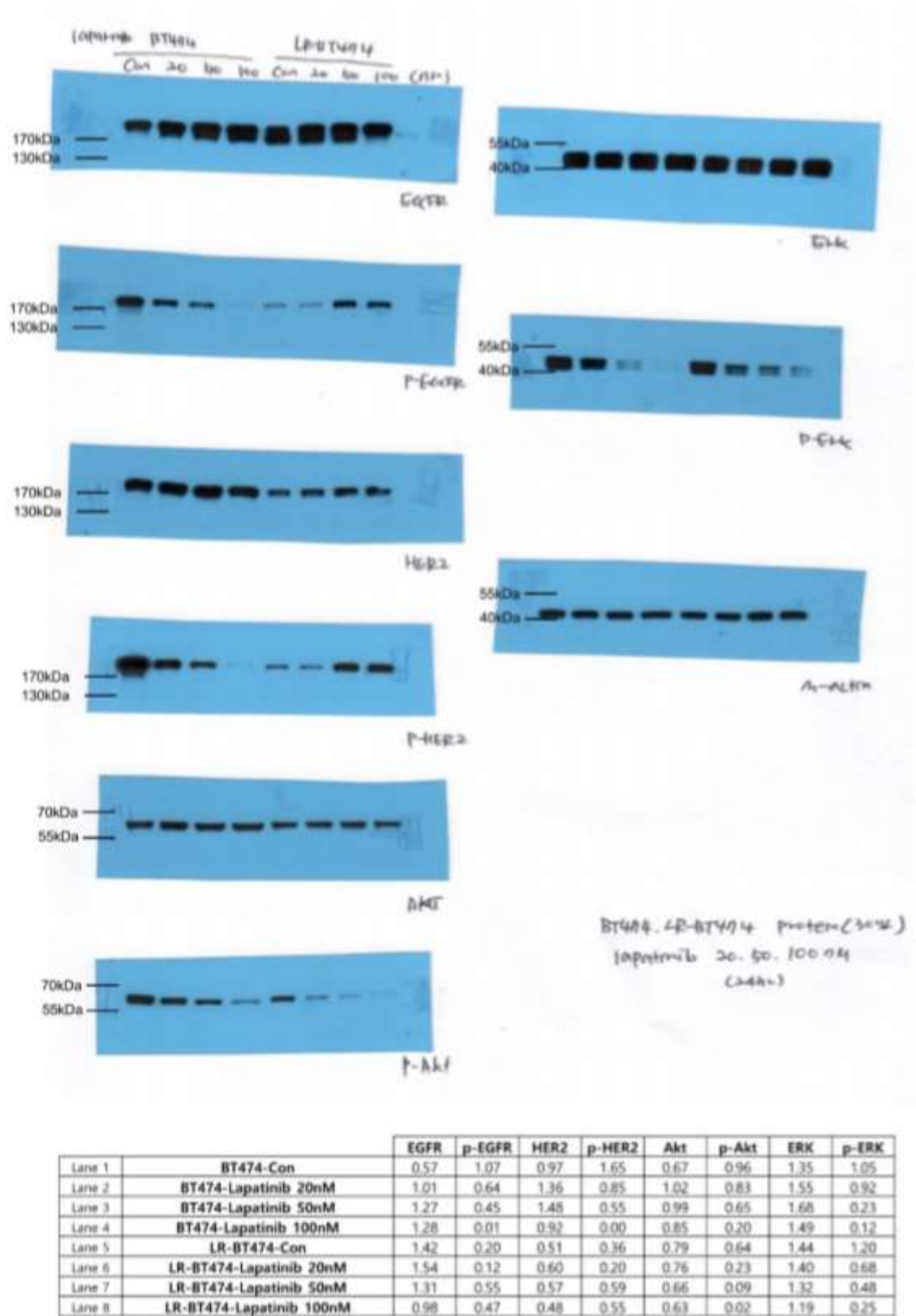
\* Correspondence: khpark@korea.ac.kr; Tel.: +82-2-920-6841

Received: 7 August 2020; Accepted: 12 September 2020; Published: date

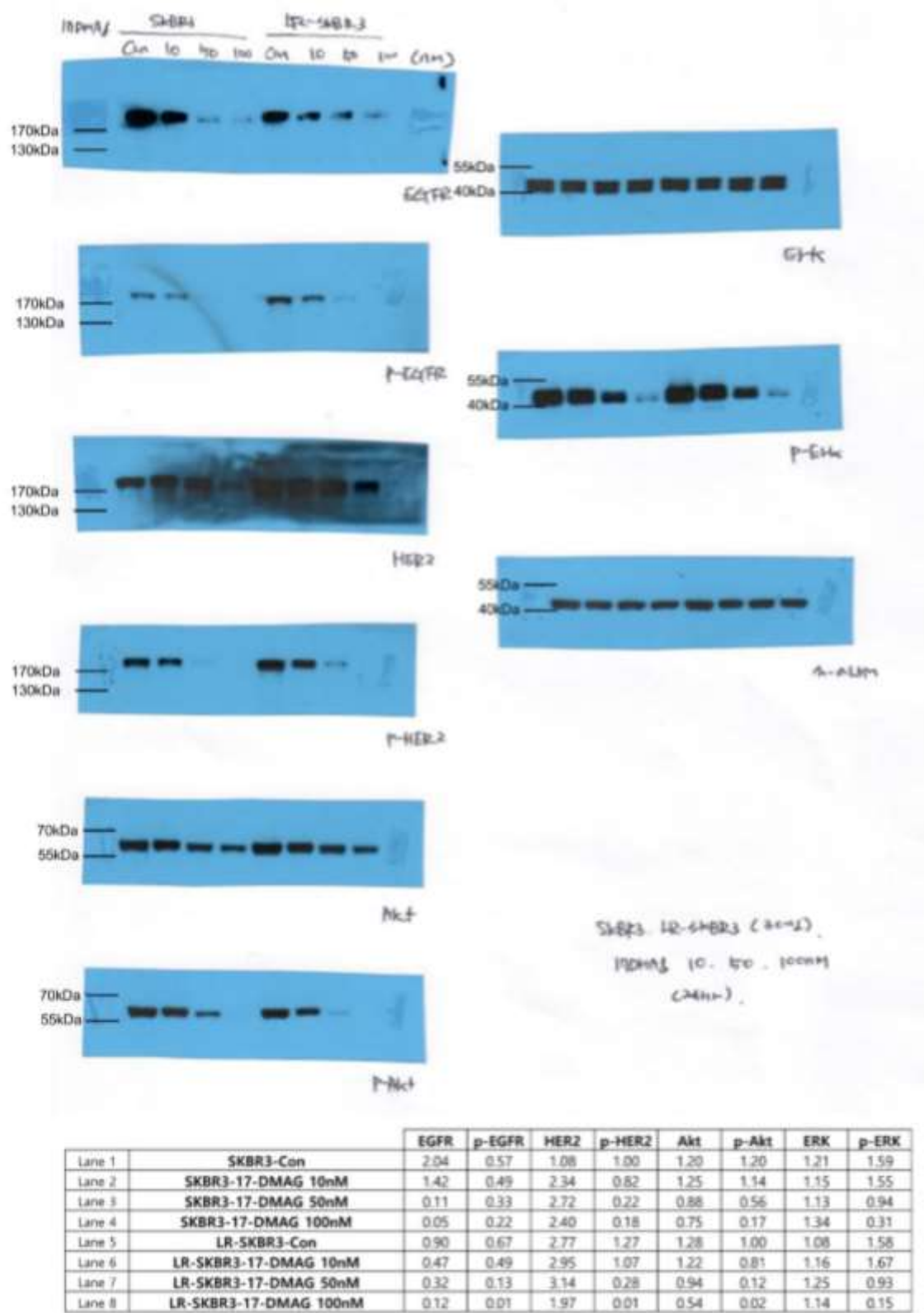
**Supplementary materials**



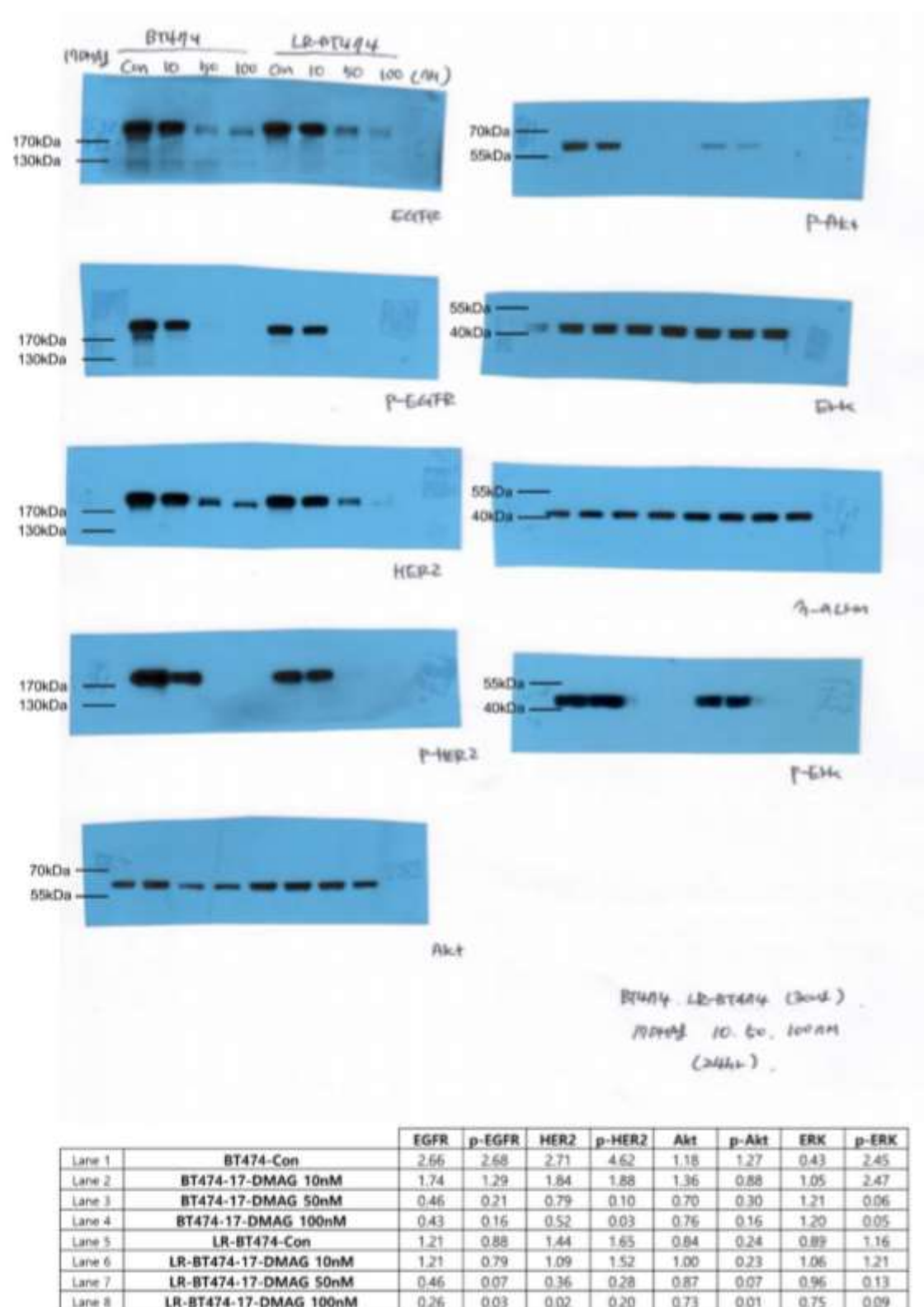
**Figure S1.** Original image and band density analysis in Figure 1B for western blot in SKBR3 and LR-SKBR3 cell lines.



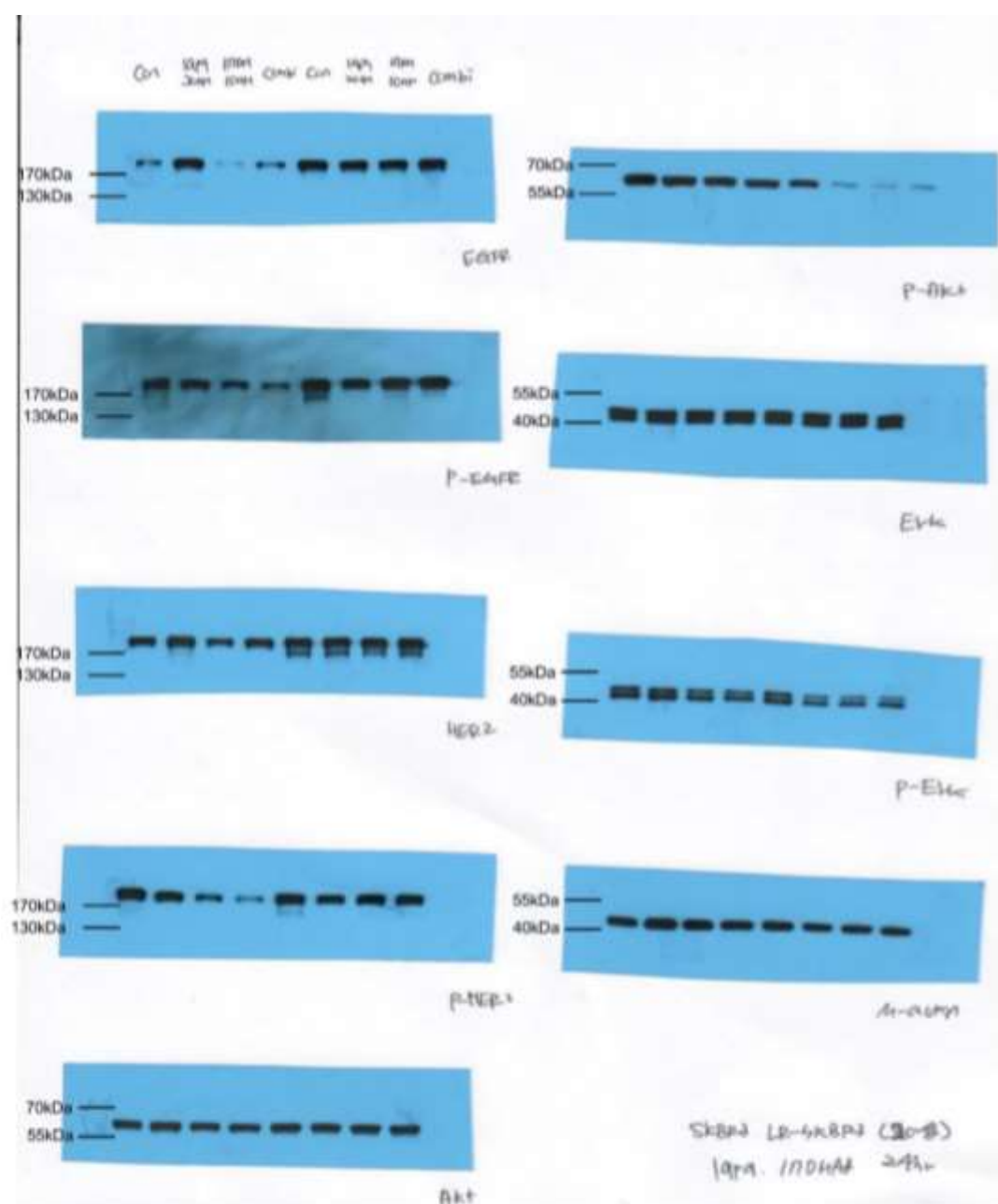
**Figure S2.** Original image and band density analysis in Figure 1B for western blot in BT474 and LR-BT474 cell lines.



**Figure S3.** Original image and band density analysis in Figure 4B for western blot in SKBR3 and LR-SKBR3 cell lines.



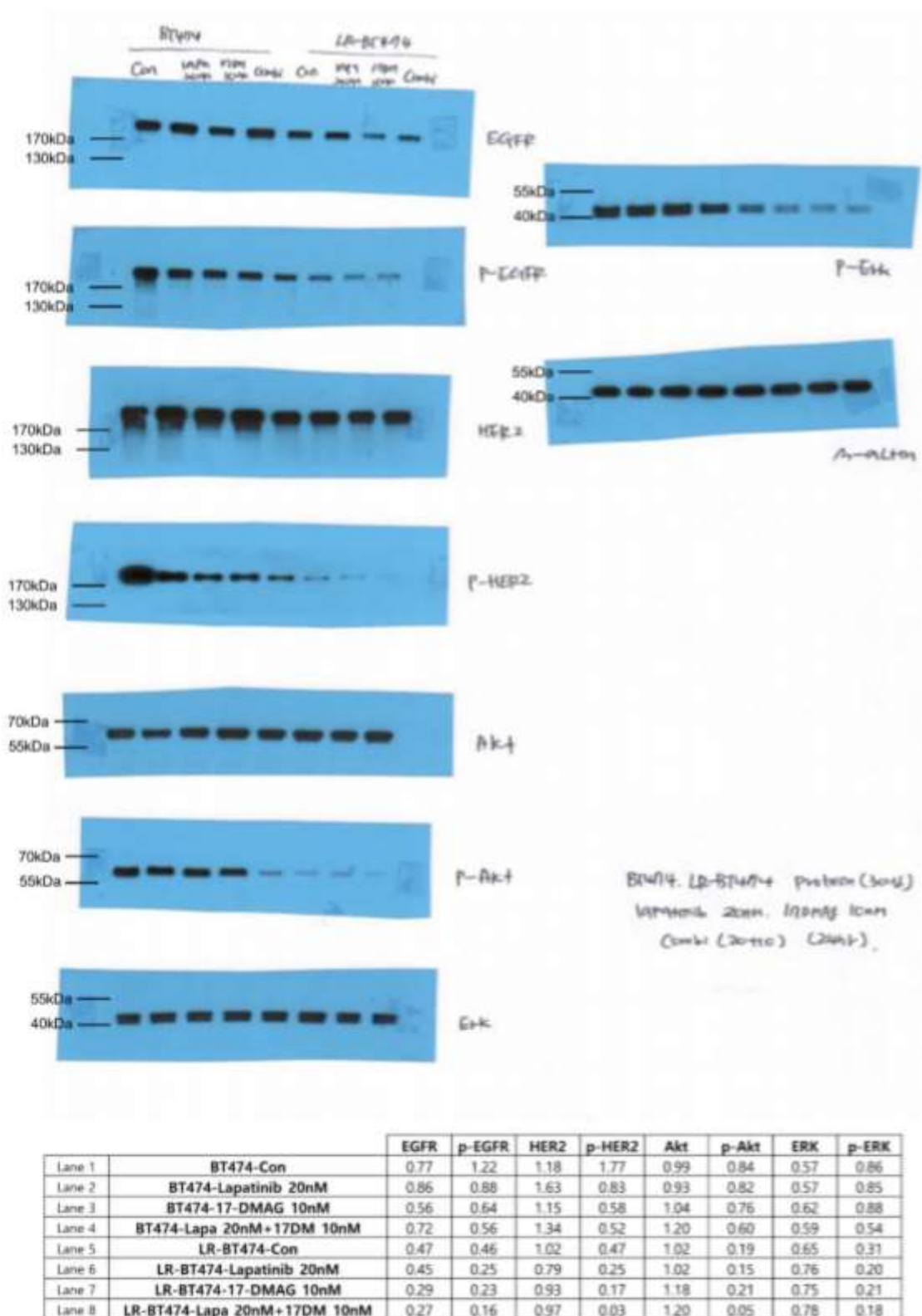
**Figure S4.** Original image and band density analysis in Figure 4B for western blot in BT474 and LR-BT474 cell lines.



		EGFR	p-EGFR	HER2	p-HER2	Akt	p-Akt	ERK	p-ERK
Lane 1	SKBR3-Con	0.47	1.67	0.72	1.34	0.80	1.36	1.21	0.89
Lane 2	SKBR3-Lapatinib 20nM	0.94	1.03	0.67	0.66	0.58	0.79	0.89	0.74
Lane 3	SKBR3-17-DMAG 10nM	0.15	0.97	0.47	0.48	0.63	0.86	1.06	0.62
Lane 4	SKBR3-Lapa 20nM+17DM 10nM	0.46	0.81	0.69	0.27	0.69	0.87	1.15	0.55
Lane 5	LR-SKBR3-Con	1.28	1.54	1.13	1.16	0.76	0.64	1.08	0.83
Lane 6	LR-SKBR3-Lapatinib 20nM	1.56	1.03	1.51	0.86	0.97	0.17	1.39	0.57
Lane 7	LR-SKBR3-17-DMAG 10nM	1.38	1.09	1.32	0.97	1.00	0.06	1.44	0.56
Lane 8	LR-SKBR3-Lapa 20nM+17DM 10nM	1.62	1.25	1.36	0.93	0.98	0.11	1.38	0.71

**Figure S5.** Original image and band density analysis in Figure 5B for western blot in SKBR3 and LR-SKBR3 cell lines.





**Figure S6.** Original image and band density analysis in Figure 5B for western blot in BT474 and LR-BT474 cell lines.