

Identification of Novel Fusion Genes in Bone and Soft Tissue Sarcoma and Their Implication in the Generation of a Mouse Model

Yasuyo Teramura, Miwa Tanaka, Yukari Yamazaki, Kyoko Yamashita, Yutaka Takazawa, Keisuke Ae, Seiichi Matsumoto, Takayuki Nakayama, Takao Kaneko, Yoshiro Musha and Takuro Nakamura

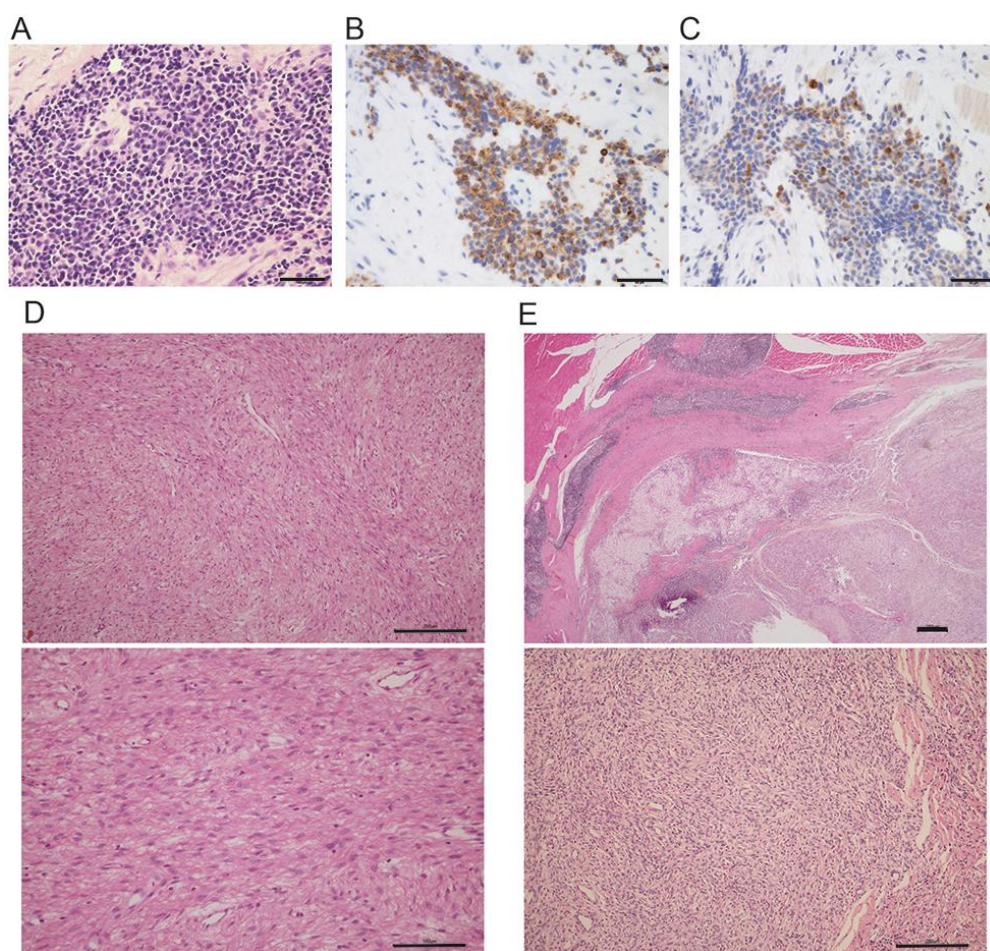


Figure S1. Histological findings of *EWSR1-ATF1*-, *GAB1-ABL1*-, and *EWSR1-CREB1*-positive cases. (A–C) Case 1 with *EWSR1-ATF1*. Although tumor cells show round cell morphology by H&E staining (A), they are positive for melanocyte markers HMB45 (B) and Melan A (C). Scale bars: 50 μ m. (D) Case 31 with *GAB1-ABL1*, showing paucicellular proliferation of spindle tumor cells dispersed in fibrous matrix. Scale bars: 200 μ m (top) and 100 μ m (bottom). (E) Case 33 with *EWSR1-CREB1*, showing tumor nodule surrounded by fibrous capsule with lymphoplasmacytic infiltration (top, scale bar: 400 μ m). Tumor cells contains moderate amount of cytoplasm with round nuclei (bottom, scale bar: 200 μ m).

