

Supplementary Material: Histopathologic Response is A Positive Predictor of Overall Survival in Patients Undergoing Neoadjuvant/Perioperative Chemotherapy for Locally Advanced Gastric or Gastroesophageal Junction Cancers—Analysis from A Large Single Center Cohort in Germany

Rebekka Schirren, Alexander Novotny, Helmut Friess and Daniel Reim

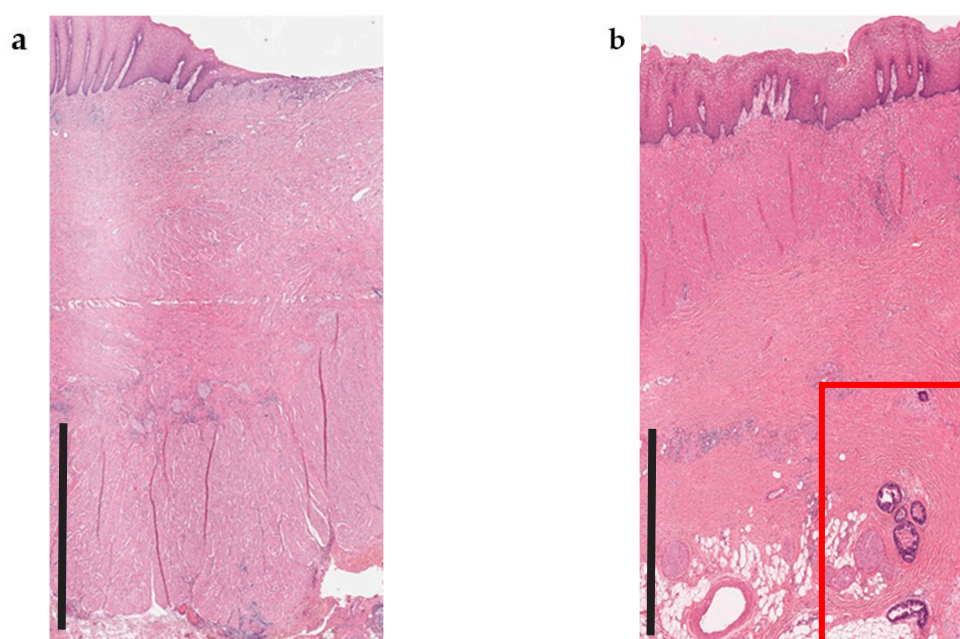


Figure S1. Histopathologic response grade Becker 1a and Becker 1b ((Sub-)total response (0–10% residual tumor cells in relation to tumor bed)). (a) In Becker 1a no residual tumor cells may be detected. (b) In Becker 1b less than 10% residual tumor cells are found (red inset-frame on the right picture). Scale bar: 1000 μm .

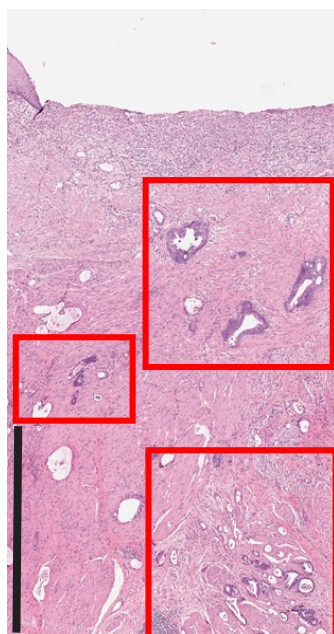


Figure S2. Histopathologic response grade Becker 2 (Partial response (10–50% residual tumor cells in relation to tumor bed)). Scattered viable tumor deposits are detectable throughout the tumor bed, which do not exceed 50% of the complete tumor area. Scale bar: 1000 μ m.

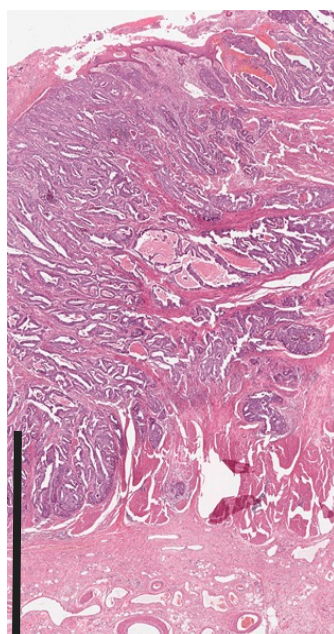


Figure S3. Histopathologic response grade Becker 3 (Non-response (>50% residual tumor cells in relation to tumor bed)). The tumor bed shows only some regression signs, most of the tumor consists of viable tumor cells. Scale bar: 1000 μ m.

