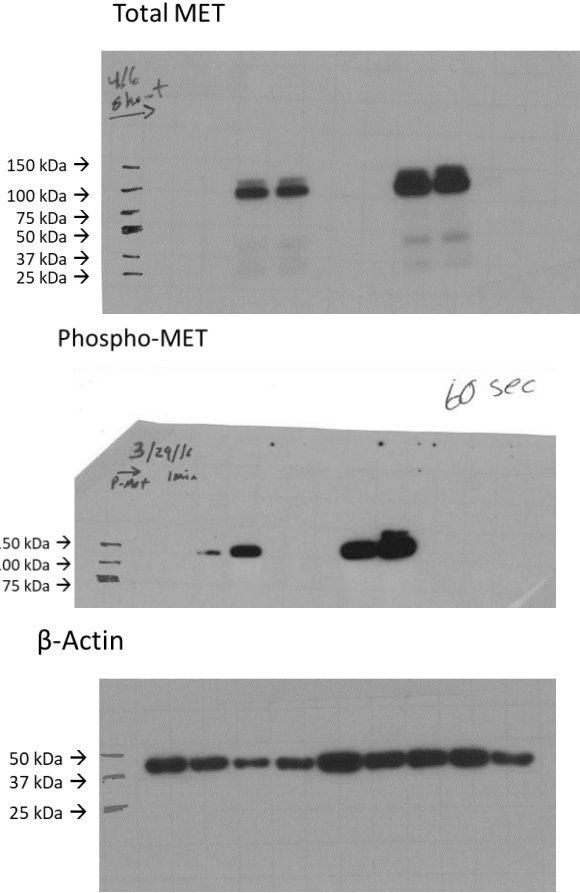


Western Blot – Figure 2
Experimental repeat 1

Samples prepared on:
28 March, 2016

- | | |
|--------------------|---------------------|
| 1. Ladder | |
| 2. MIA PaCa-2 | 3D |
| 3. MIA PaCa-2+MRC5 | 3D |
| 4. AsPC-1 | 3D |
| 5. AsPC-1+MRC5 | 3D |
| 6. MIA PaCa-2 | 2D |
| 7. MIA PaCa-2+MRC5 | 2D |
| 8. AsPC-1 | 2D |
| 9. AsPC-1+MRC5 | 2D |
| 10. MRC5 | 2D (Not Quantified) |

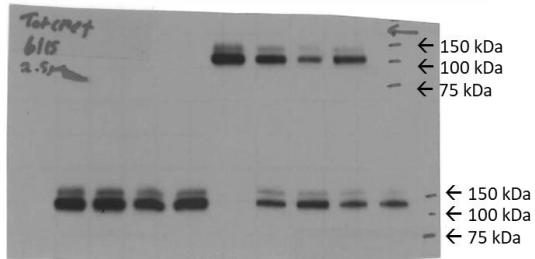


Experimental repeat 2-4

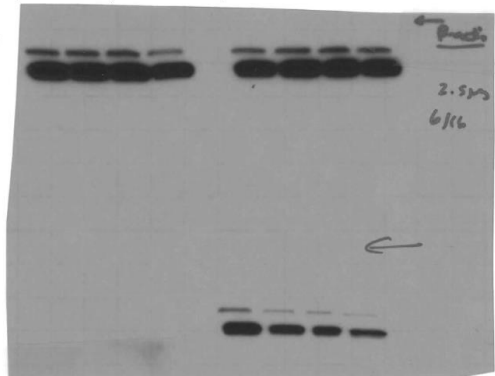
Samples prepared on:
May 28, 2016

- Blot 1 (Exp. Repeat 2 & 3)
- | | |
|---------------------|----|
| 1. Ladder | |
| 2. AsPC-1 (2) | 3D |
| 3. AsPC-1+ MRC5 (2) | 3D |
| 4. AsPC-1 (3) | 3D |
| 5. AsPC-1+ MRC5 3) | 3D |
| 6. Ladder | |
| 7. AsPC-1 (2) | 2D |
| 8. AsPC-1+MRC5 (2) | 2D |
| 9. AsPC-1 (3) | 2D |
| 10. AsPC-1+MRC5 (3) | 2D |

Total MET (mirrored)



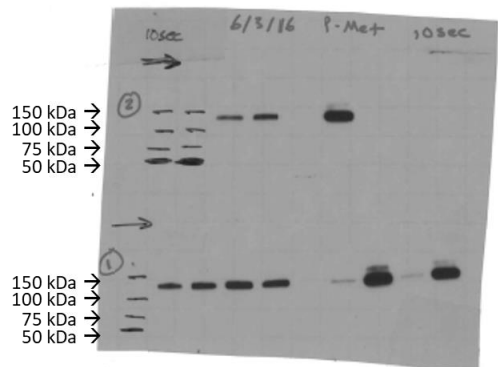
β-Actin (mirrored)



Samples prepared on:
June 2, 2016

- Blot 2 (Exp. Repeat 4)
- | | |
|---------------------|----|
| 1. Ladder | |
| 2. Ladder | |
| 2. AsPC-1 (4) | 3D |
| 3. AsPC-1+ MRC5 (4) | 3D |
| 4. AsPC-1 (4) | 2D |
| 5. AsPC-1+ MRC5 (4) | 2D |

Phospho-MET



Western Blot – Figure 2
Densitometry

Cell line(s)	Culture type	Exp. Repeat	β-actin	MET	phospho-MET
MIA PaCa-2	2D	1	22746.602	47.95	54.778
MIA PaCa-2+MRC5	2D	1	18713.409	65.364	98.192
AsPC-1	2D	1	11307.075	17851.258	3330.012
AsPC-1+MRC5	2D	1	15457.56	17203.844	16559.782
MIA PaCa-2	3D	1	30337.794	73.364	77.192
MIA PaCa-2+MRC5	3D	1	24556.823	89.364	63.364
AsPC-1	3D	1	25398.066	33791.179	26495.459
AsPC-1+MRC5	3D	1	25373.723	33106.693	38345.238
AsPC-1	3D	2	28880.401	7450.539	10954.104
AsPC-1+MRC5	3D	2	32589.279	8480.803	14222.56
AsPC-1	3D	3	32602.643	13087.338	15076.125
AsPC-1+MRC5	3D	3	26900.501	10576.409	16452.388
AsPC-1	2D	2	25411.208	20125.752	7193.619
AsPC-1+MRC5	2D	2	32525.572	19457.773	29080.723
AsPC-1	2D	3	33164.765	24394.673	6878.912
AsPC-1+MRC5	2D	3	30323.907	24222.894	26361.773
AsPC-1	3D	4	8980.347	10370.439	10323.326
AsPC-1+MRC5	3D	4	10062.175	5385.711	12162.468
AsPC-1	2D	4	12402.761	13483.459	723.456
AsPC-1+MRC5	2D	4	16739.246	20078.116	26485.288

Western Blot – Figure 4

Experimental repeat 1

Samples prepared on:
3 February, 2016

1. Ladder

2. AsPC-1

3. AsPC-1

4. AsPC-1

5. AsPC-1

6. AsPC-1+MRC5

7. AsPC-1+MRC5

8. AsPC-1+MRC5

9. AsPC-1+MRC5

10. AsPC-1+MRC5
- 0h post-PDT

0.5h post-PDT

2.5h post-PDT

8h post-PDT

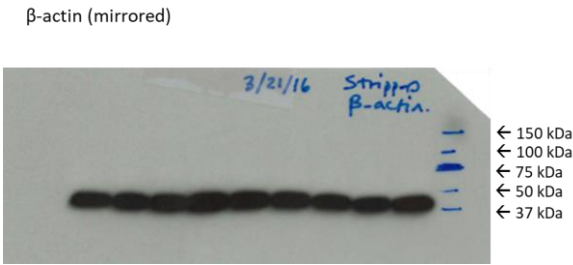
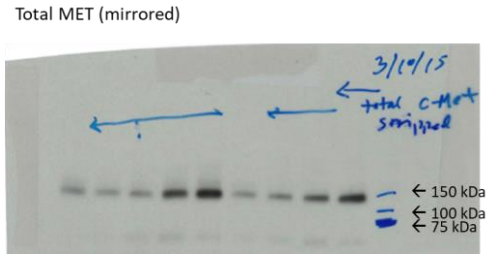
0h post-PDT

0.5h post-PDT

2.5h post-PDT

5h post-PDT(not quantif.)

8h post-PDT



Experimental repeat 2

Samples prepared on:
11 April, 2016

1. Ladder

2. AsPC-1

3. AsPC-1

4. AsPC-1

5. AsPC-1

6. AsPC-1+MRC5

7. AsPC-1+MRC5

8. AsPC-1+MRC5

9. AsPC-1+MRC5

10. AsPC-1+MRC5
- 0h post-PDT

1h post-PDT

4h post-PDT

24h post-PDT

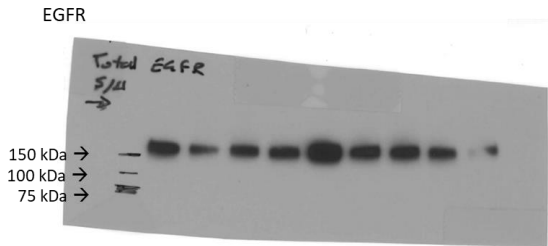
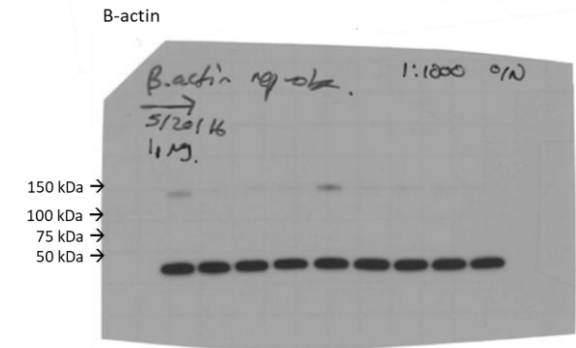
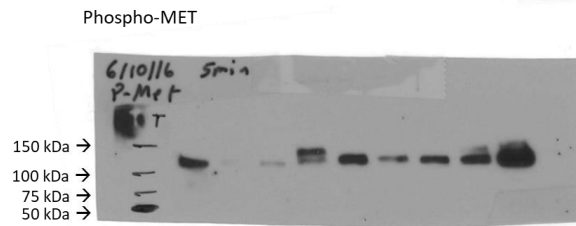
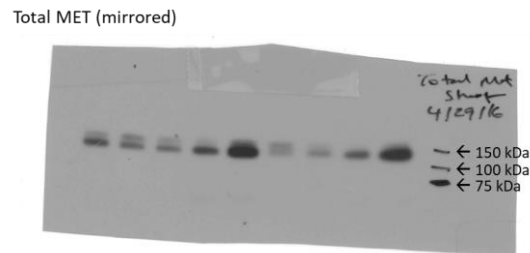
0h post-PDT

1h post-PDT

4h post-PDT

24h post-PDT

48h post-PDT (not quantif.)



Experimental repeat 3

Samples prepared on:
July 21, 2016

1. Ladder

2. AsPC-1+MRC5

3. AsPC-1

4. AsPC-1+MRC5

5. AsPC-1

6. AsPC-1+MRC5

7. AsPC-1
- 0h post-PDT

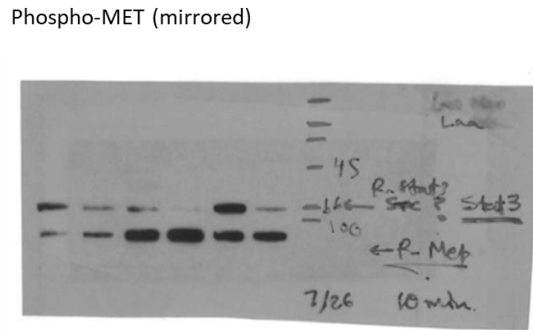
0h post-PDT

24h post-PDT

24h post-PDT

48h post-PDT (not quantified)

48h post-PDT (not quantified)



Western Blot – Figure 4
Densitometry

Cell line(s)	Hours post-PDT	Exp. Repeat	β-actin	MET	phospho-MET
AsPC-1	0	1	15853.51	9067.539	-
AsPC-1	0.5	1	18047.995	5372.104	-
AsPC-1	4	1	19313.53	3375.569	-
AsPC-1	8	1	21504.116	2933.983	-
AsPC-1+MRC5	0	1	17917.388	8730.56	-
AsPC-1+MRC5	0.5	1	16989.51	2972.276	-
AsPC-1+MRC5	4	1	15900.51	2604.69	-
AsPC-1+MRC5	8	1	16823.146	3554.347	-
AsPC-1	0	2	9979.983	8325.276	4564.033
AsPC-1	1	2	10009.69	3070.962	99.192
AsPC-1	4	2	9426.033	1676.719	401.213
AsPC-1	24	2	8867.497	2026.648	4439.719
AsPC-1+MRC5	0	2	9463.033	8908.74	4254.891
AsPC-1+MRC5	1	2	10140.154	3852.841	1664.87
AsPC-1+MRC5	4	2	9577.033	2440.426	3006.113
AsPC-1+MRC5	24	2	9850.154	3043.305	4878.134
AsPC-1	0	3	-	-	5593.619
AsPC-1	24	3	-	-	5859.426
AsPC-1+MRC5	0	3	-	-	5138.669
AsPC-1+MRC5	24	3	-	-	8033.033