

Supplementary Materials: Genetic Target Modulation Employing CRISPR/Cas9 Identifies Glyoxalase 1 as a Novel Molecular Determinant of Invasion and Metastasis in A375 Human Malignant Melanoma Cells In Vitro and In Vivo

Jana Jandova, Jessica Perer, Anh Hua, Jeremy A. Snell and Georg T. Wondrak

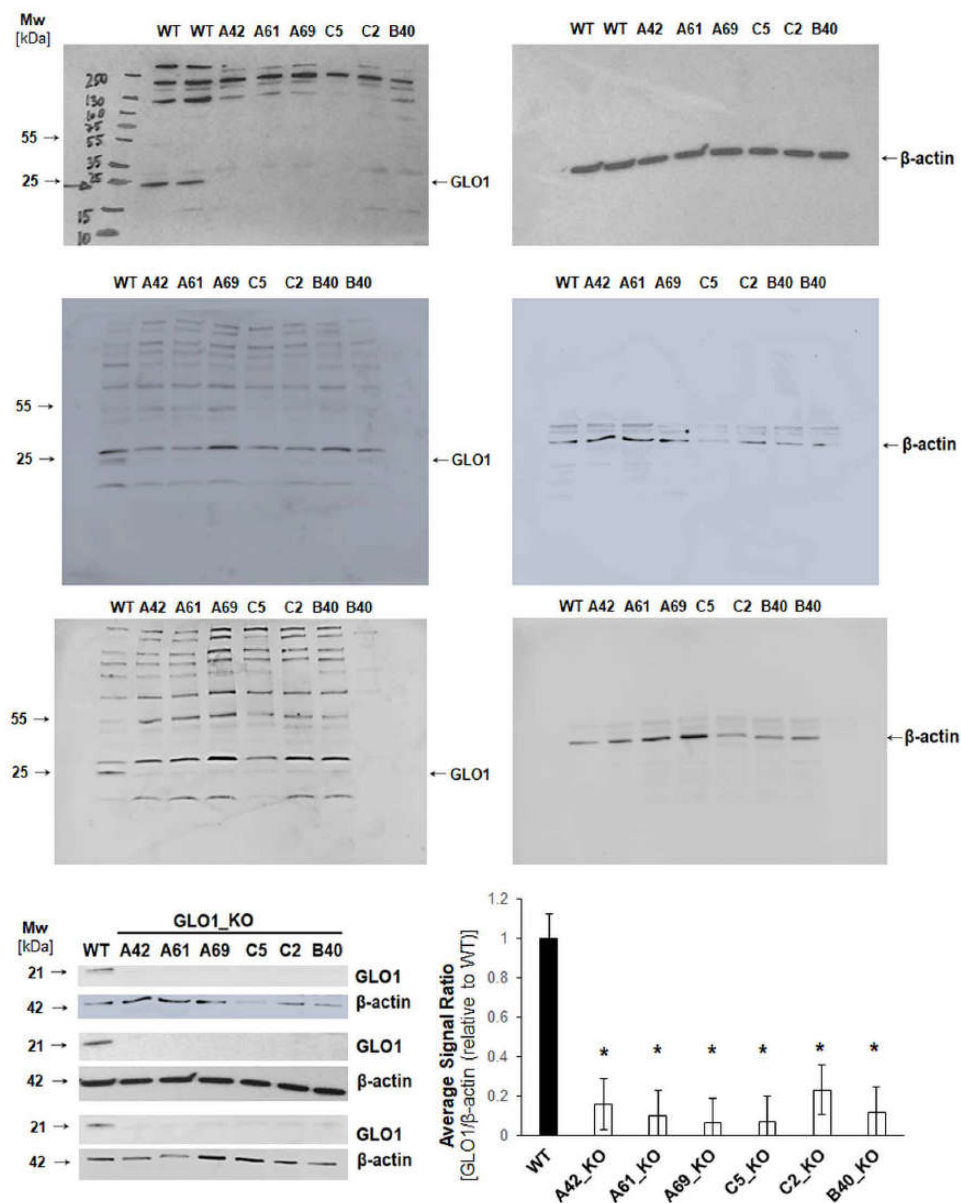


Figure S1. The uncropped blots and molecular weight markers of Figure 1C.

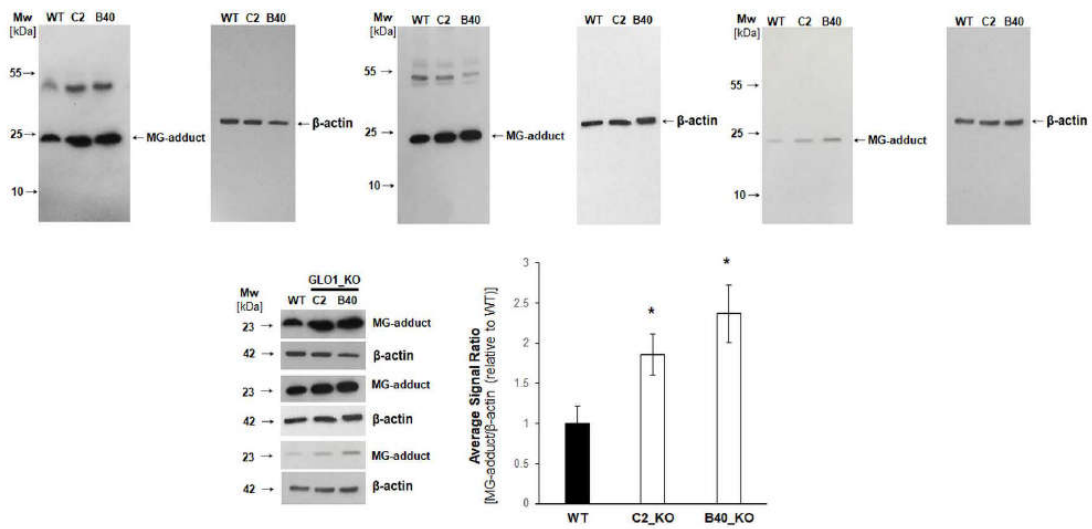


Figure S2. The uncropped blots and molecular weight markers of Figure 1E.

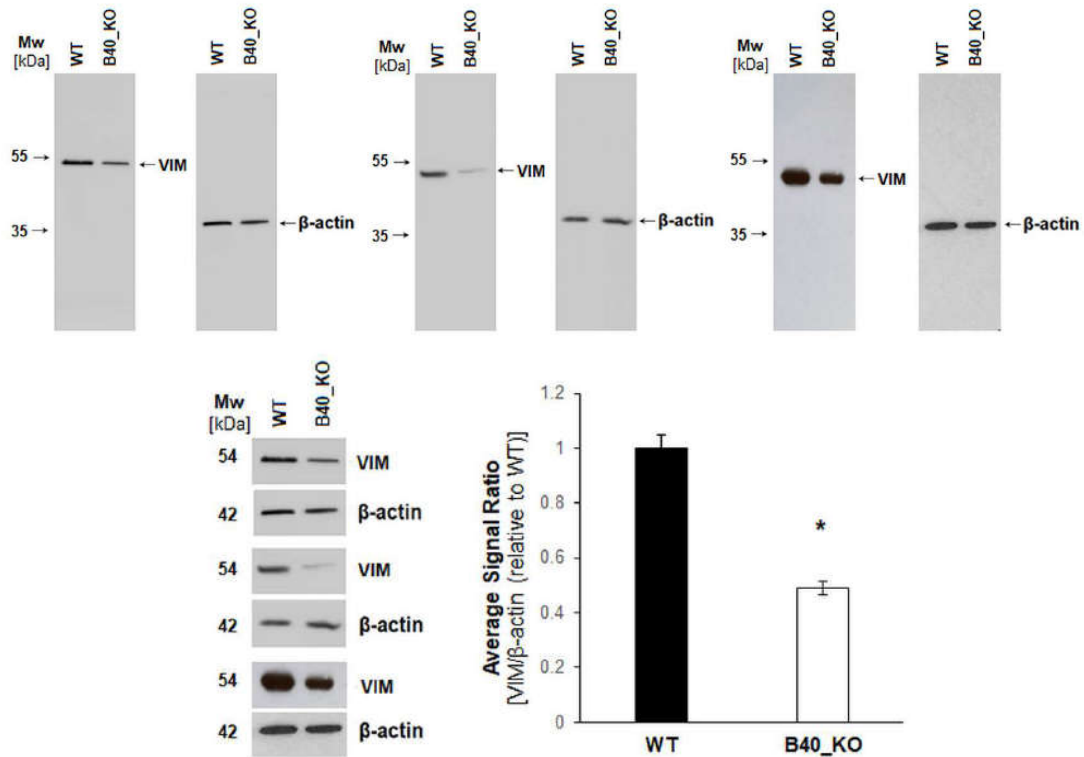


Figure S3. The uncropped blots and molecular weight markers of Figure 4B.

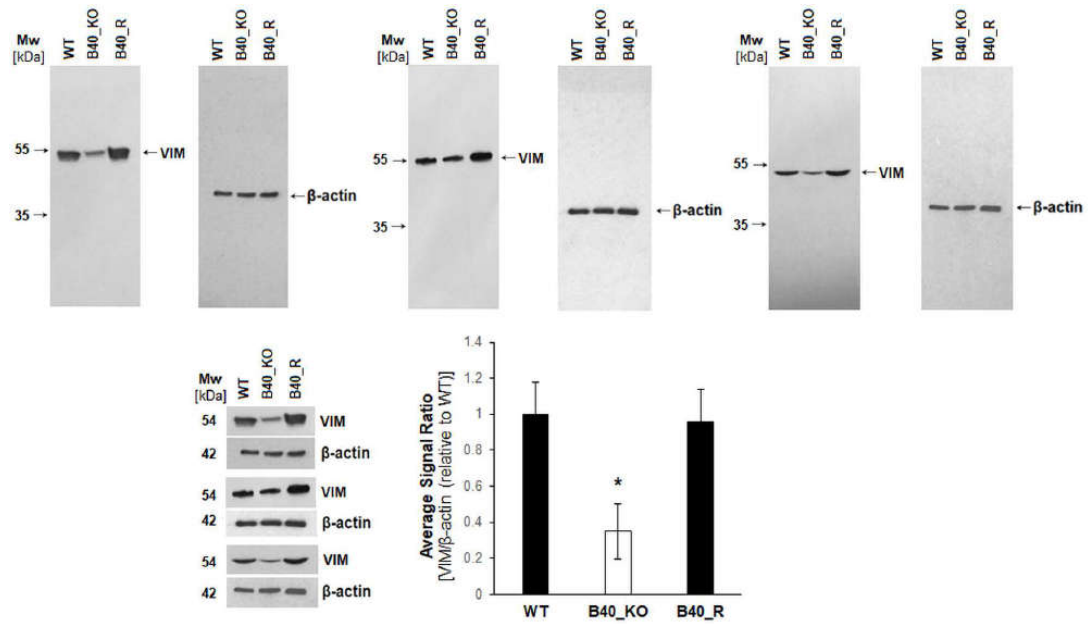


Figure S4. The uncropped blots and molecular weight markers of Figure 6E.



© 2020 by the authors. Licensee MDPI, Basel, Switzerland. This article is an open access article distributed under the terms and conditions of the Creative Commons Attribution (CC BY) license (<http://creativecommons.org/licenses/by/4.0/>).