

Article

Haute Couture or Ready-to-Wear? Tailored Pelvic Radiotherapy for Prostate Cancer Based on Individualized Sentinel Lymph Node Detection

Anne-Victoire Michaud, Benoit Samain, Ludovic Ferrer, Vincent Fleury, Mélanie Doré, Mathilde Colombié, Claire Dupuy, Emmanuel Rio, Valentine Guimas, Thierry Rousseau, Maelle Le Thiec¹, Grégory Delpont, Caroline Rousseau and Stéphane Supiot

Supplementary Materials

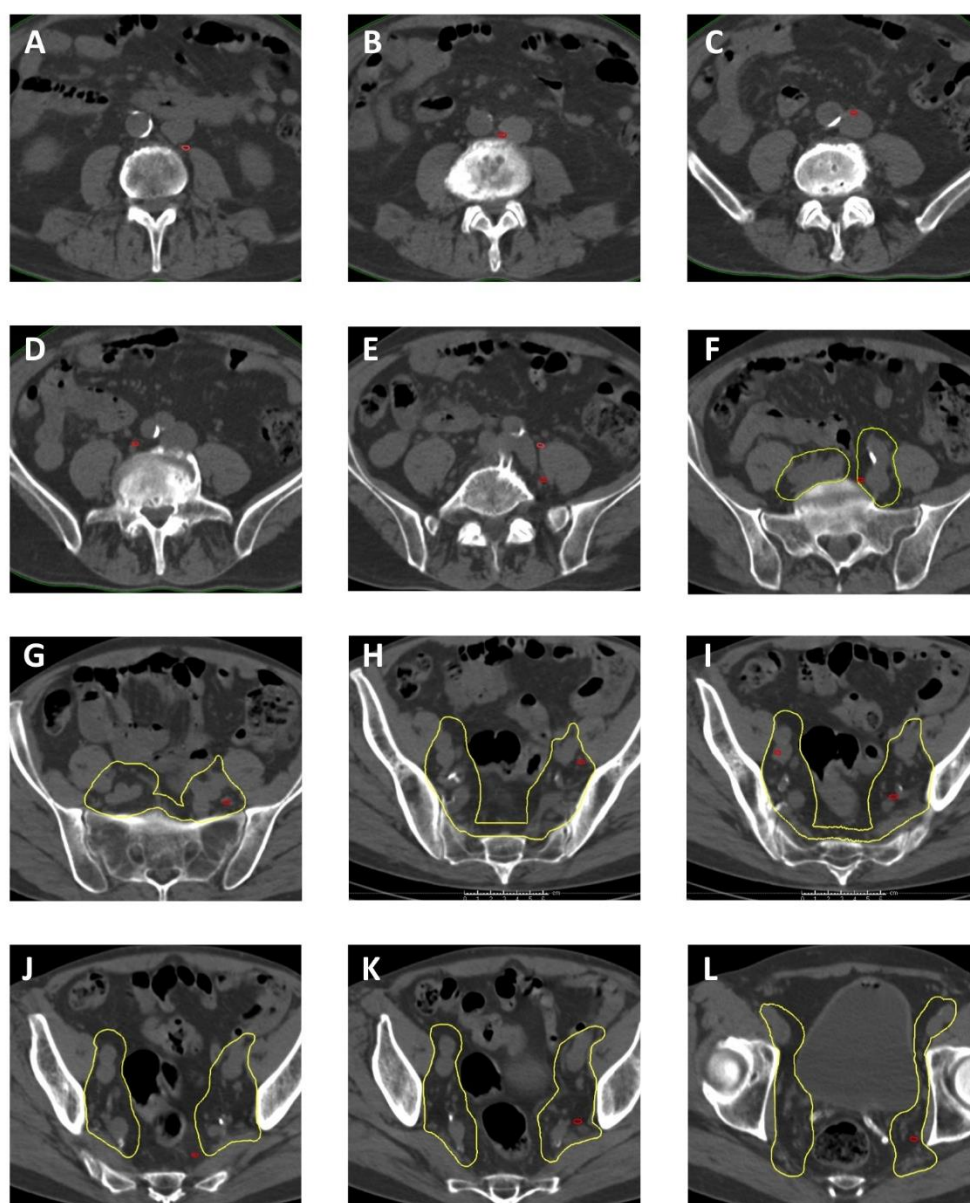


Figure S1. Example of SPECT/CT in a patient with sentinel lymph nodes (red) within or outside the RTOG CTV (yellow) at different axial levels. Para-Aortic (A,B,C) Proximal Common Iliac (D,E) Distal

Common Iliac (**F,G**) Internal and External Iliac (**H,I**) Presacral (**J**), Internal Iliac (**K**) Obturator Fossa (**L**) SLNs.



© 2020 by the authors. Licensee MDPI, Basel, Switzerland. This article is an open access article distributed under the terms and conditions of the Creative Commons Attribution (CC BY) license (<http://creativecommons.org/licenses/by/4.0/>).